

VETERANS MEMORIAL PARKWAY SITE PLAN:  
STA 4+00 TO 12+00

**VETERANS MEMORIAL PARKWAY PAVEMENT LEGEND**

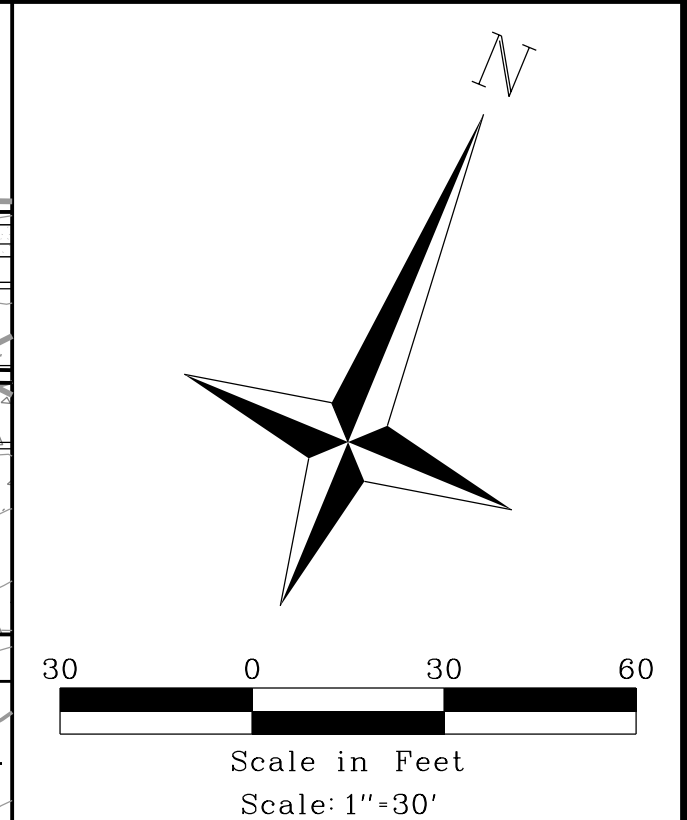
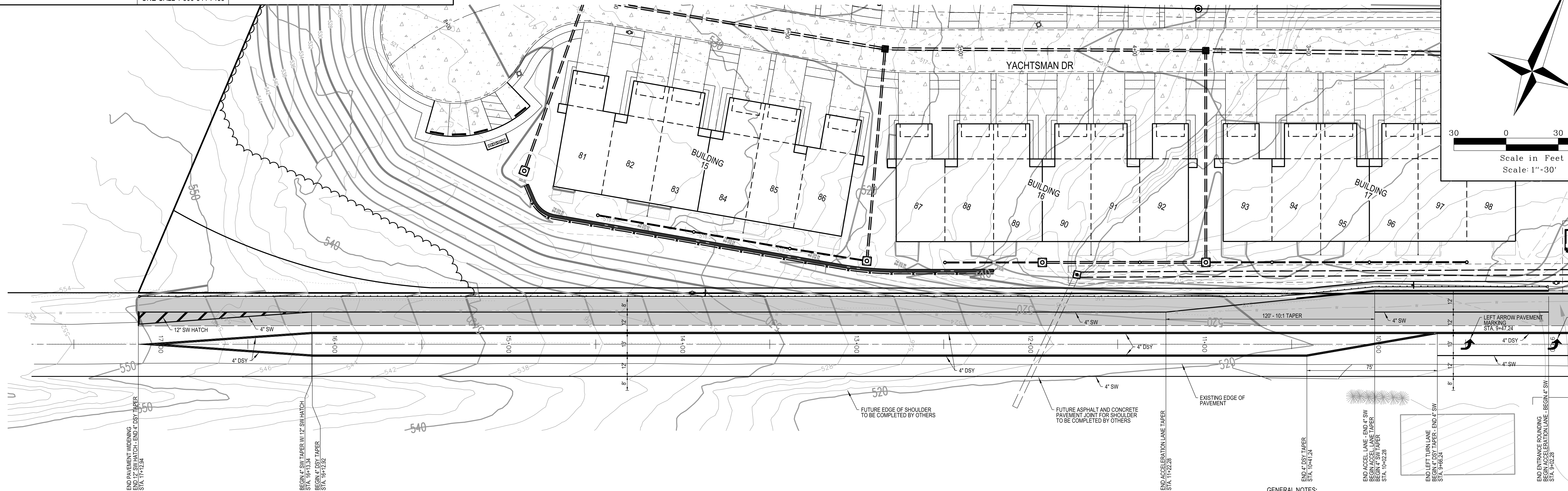
4' SY	4" SOLID YELLOW LANE / EDGE LINE
4' DS	4" DOUBLE SOLID YELLOW LANE / EDGE LINE
4' SW	4" SOLID WHITE LANE / EDGE LINE
4' DS	4" DOUBLE SOLID WHITE LANE / EDGE LINE
4' DS	4" DOUBLE SOLID WHITE LANE / EDGE LINE
12' SW	12" SOLID WHITE HATCH
24' SW	24" STOP BAR
ATO	ADJUST TO GRADE
EP	EDGE OF PAVEMENT
EX	EXISTING

CALL MISSOURI ONE CALL SYSTEMS INC. TWO FULL WORKING DAYS IN ADVANCE OF STARTING



WORK MISSOURI ONE-CALL 1-800-344-7483

THE UNDERGROUND UTILITIES SHOWN HEREIN WERE PLOTTED FROM AVAILABLE INFORMATION AND DO NOT NECESSARILY REFLECT THE ACTUAL EXISTENCE, OR NON EXISTENCE, SIZE, TYPE, NUMBER, OR LOCATION OF THESE OR OTHER UTILITIES. THE GENERAL CONTRACTOR SHALL BE RESPONSIBLE FOR VERIFYING THE ACTUAL LOCATION OF ALL UNDERGROUND UTILITIES IN THE FIELD, SHOWN OR NOT SHOWN, PRIOR TO ANY GRADING, EXCAVATION, OR CONSTRUCTION OF IMPROVEMENTS. THESE PROVISIONS SHALL IN NO WAY ABSOLVE ANY PARTY FROM COMPLYING WITH THE UNDERGROUND FACILITY SAFETY AND DAMAGE PREVENTION ACT, CHAPTER 319, RSMO.



VETERANS MEMORIAL PARKWAY SITE PLAN:  
STA 9+00 TO 17+50

- GENERAL NOTES:**
- PAVEMENT MARKINGS SHOWN ARE FOR THE ULTIMATE CONDITION AND SHOULD ONLY BE CONSTRUCTED ONCE FULL WIDTH PAVEMENT WIDENING INCLUDING TO THE SOUTHERN HALF OF VETERANS MEMORIAL PARKWAY HAS BEEN COMPLETED BY OTHERS.
  - BUILDINGS 15, 16, AND 17 (UNITS 81-88) MAY NOT BE CONSTRUCTED UNTIL IMPROVEMENTS TO VETERANS MEMORIAL PARKWAY HAVE BEEN COMPLETED AS OBLIGATED BY THE DEVELOPER PER THE DEVELOPMENT AGREEMENT WITH THE CITY OF OFALLON.

**Lombardo**  
H.O.M.E.S.  
4 Research Park Drive, Suite 130  
St. Charles, MO 63304  
Phone: (636) 265-2710

**VOLZ**  
INCORPORATED  
10849 Indian Head Indl. Blvd.  
St. Louis, Missouri 63132  
314.890.1250 Fax  
www.volzinc.com  
Aurumity #203

RYAN L. HOLMES  
Professional Engineer  
PE-2017018988

**THE VILLAS AT ARAGON**  
VETERANS MEMORIAL PARKWAY  
OFALLON, MO 63366

VETERANS MEMORIAL PARKWAY ULTIMATE PAVEMENT MARKING PLAN  
Permit ID: 2-056C-S026-06-0001.10  
Design By: R/LH  
Drawn By: R/LH  
Checked By: R/LH  
Permit No. GR22-00001  
Vote Project # 22649  
10-12-22  
C14.6