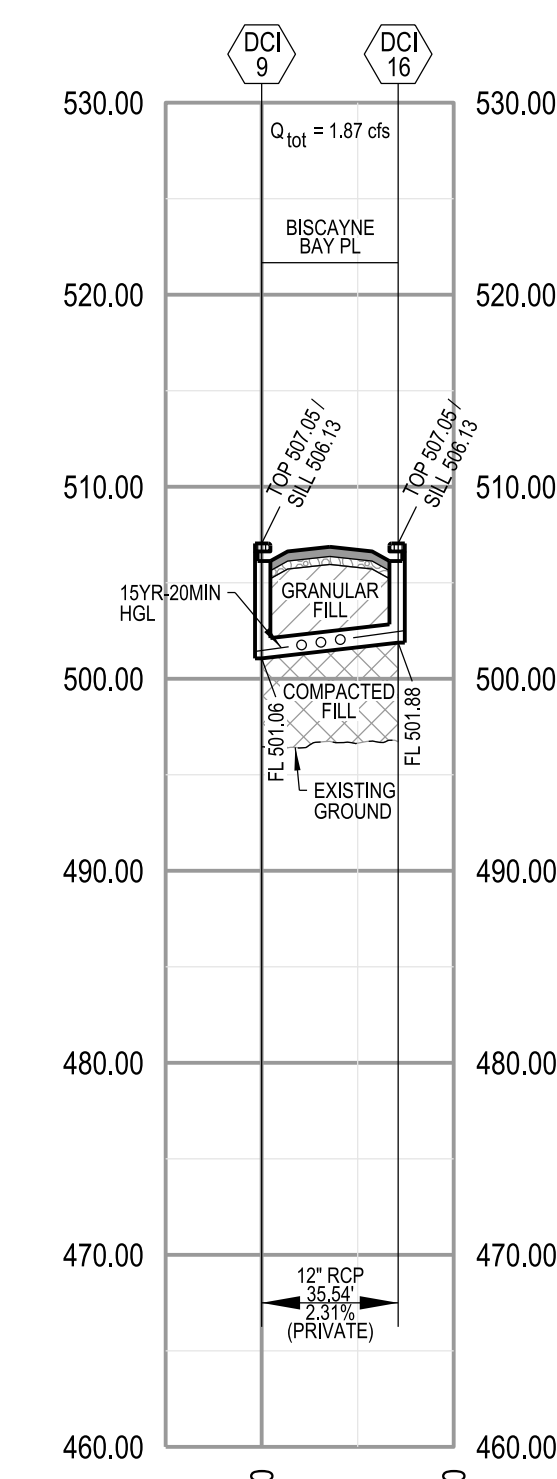


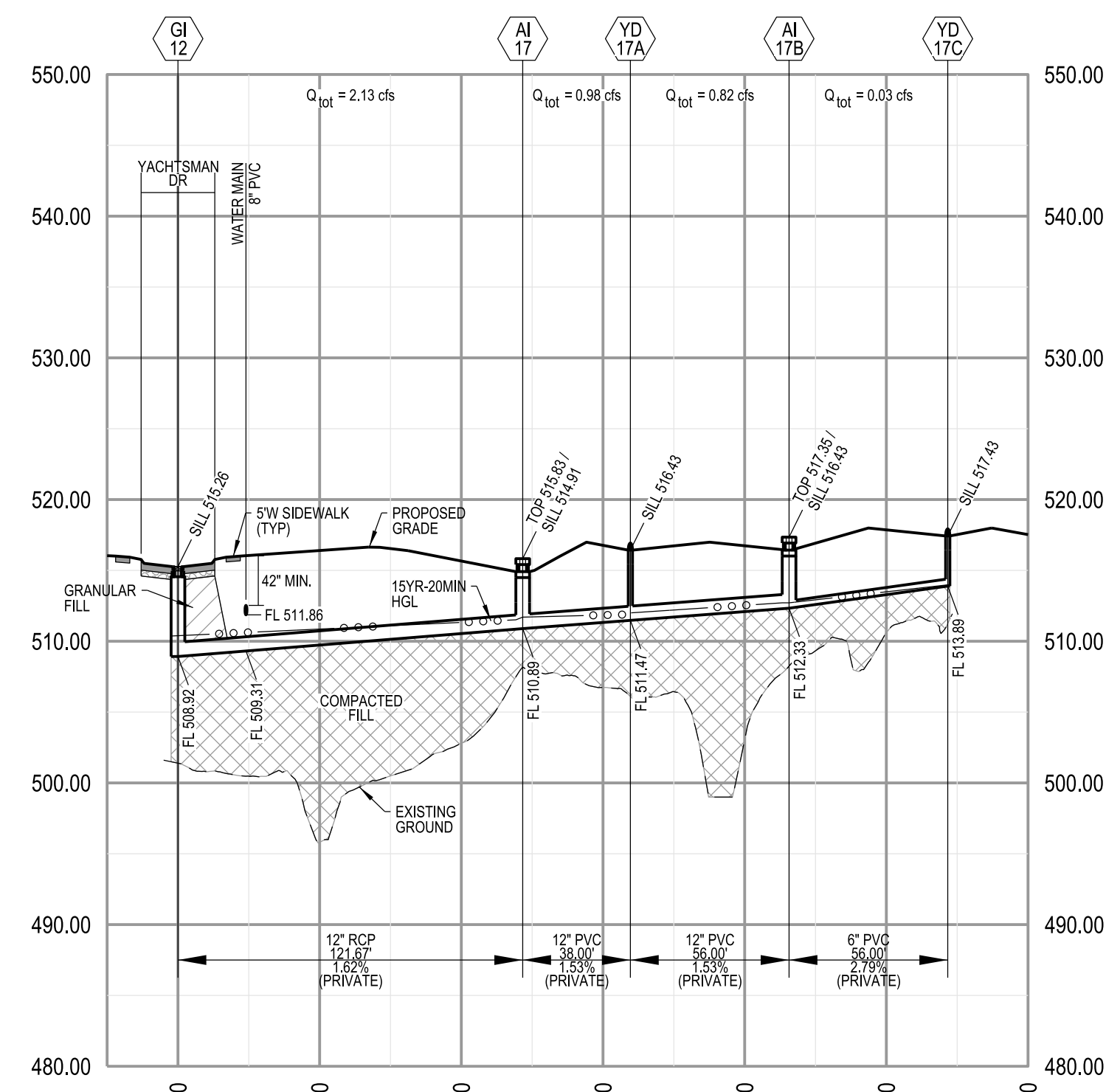
STORM PROFILE: FE 8 - AI 15

HORIZONTAL SCALE: 1" = 50'
VERTICAL SCALE: 1" = 10'



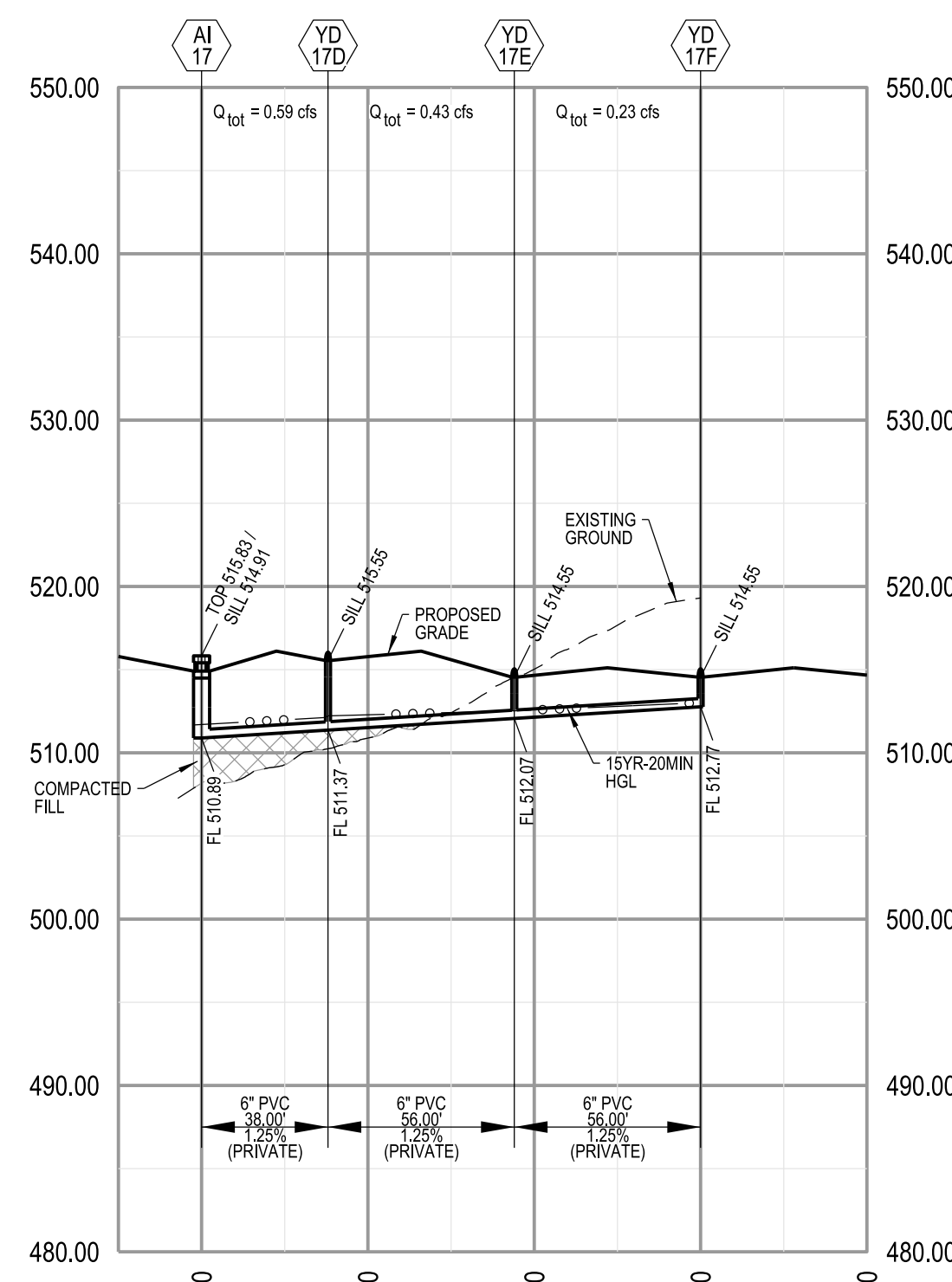
STORM PROFILE: DCI 9 - DCI 16

HORIZONTAL SCALE: 1" = 50'
VERTICAL SCALE: 1" = 10'



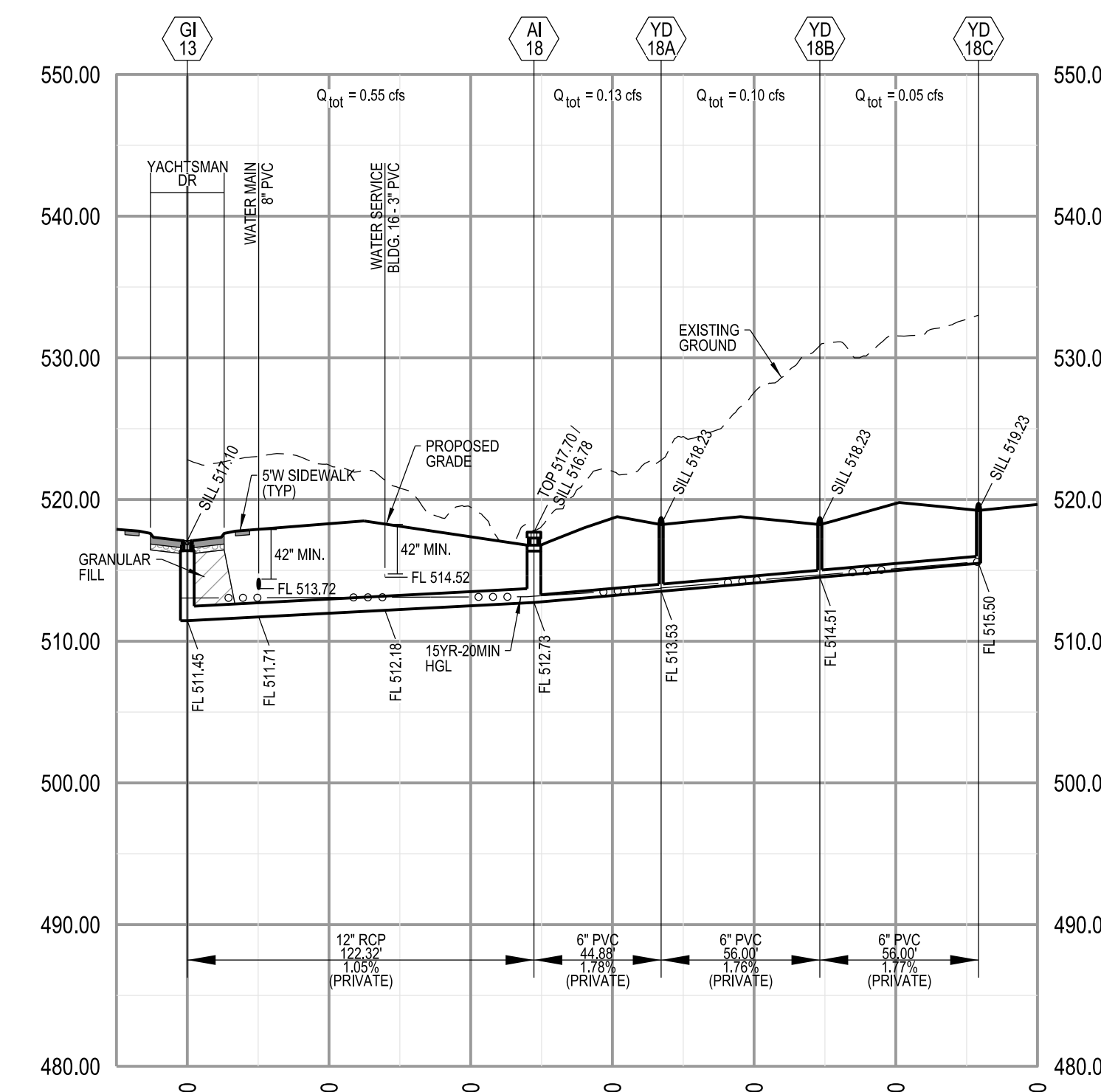
STORM PROFILE: GI 12 - YD 17C

HORIZONTAL SCALE: 1" = 50'
VERTICAL SCALE: 1" = 10'



STORM PROFILE: AI 17 - YD 17F

HORIZONTAL SCALE: 1" = 50'
VERTICAL SCALE: 1" = 10'



STORM PROFILE: GI 13 - YD 18C

HORIZONTAL SCALE: 1" = 50'
VERTICAL SCALE: 1" = 10'

CALL MISSOURI ONE CALL SYSTEMS INC. TWO FULL WORKING DAYS IN ADVANCE OF STARTING WORK. MISSOURI ONE-CALL 1-800-344-7483

THE UNDERGROUND UTILITIES SHOWN HEREIN WERE PLOTTED FROM AVAILABLE INFORMATION AND DO NOT NECESSARILY REFLECT THE ACTUAL EXISTENCE, OR NON EXISTENCE, SIZE, TYPE, NUMBER, OR LOCATION OF THESE OR OTHER UTILITIES. THE GENERAL CONTRACTOR SHALL BE RESPONSIBLE FOR VERIFYING THE ACTUAL LOCATION OF ALL UNDERGROUND UTILITIES IN THE FIELD, SHOWN OR NOT SHOWN, PRIOR TO ANY GRADING, EXCAVATION, OR CONSTRUCTION OF IMPROVEMENTS. THESE PROVISIONS SHALL IN NO WAY ABSOLVE ANY PARTY FROM COMPLYING WITH THE UNDERGROUND FACILITY SAFETY AND DAMAGE PREVENTION ACT, CHAPTER 319, RSMO.

NOTE: STORM SEWERS FE 1 - FE 2 AND FE 3 - MH 7 WERE APPROVED AND PERMITTED WITH THE GRADING PLAN (PERMIT NUMBER GR22-000002)

Lombardo
H · O · M · E · S
4 Research Park Drive, Suite 130
St. Charles, MO 63304
Phone: (636) 265-2710

VOLZ
INCORPORATED
10849 Indian Head Indl. Blvd.
St. Louis, Missouri 63132
314.890.1250 Fax
www.volzinc.com
Aulinity #203

RYAN L. HOLMES
Professional Engineer
PE-2017018988

THE VILLAS AT ARAGON
VETERANS MEMORIAL PARKWAY
OF FALLON, MO 63366

STORM SEWER PROFILES:
SHEET 1
Design By: R/LH
Drawn By: R/LH
Checked By: R/LH
Permit No. GR22-000001
Volz Project # 22649
Printed ID: 2-096C-S026-06-0001.10
10-12-22
C15.0