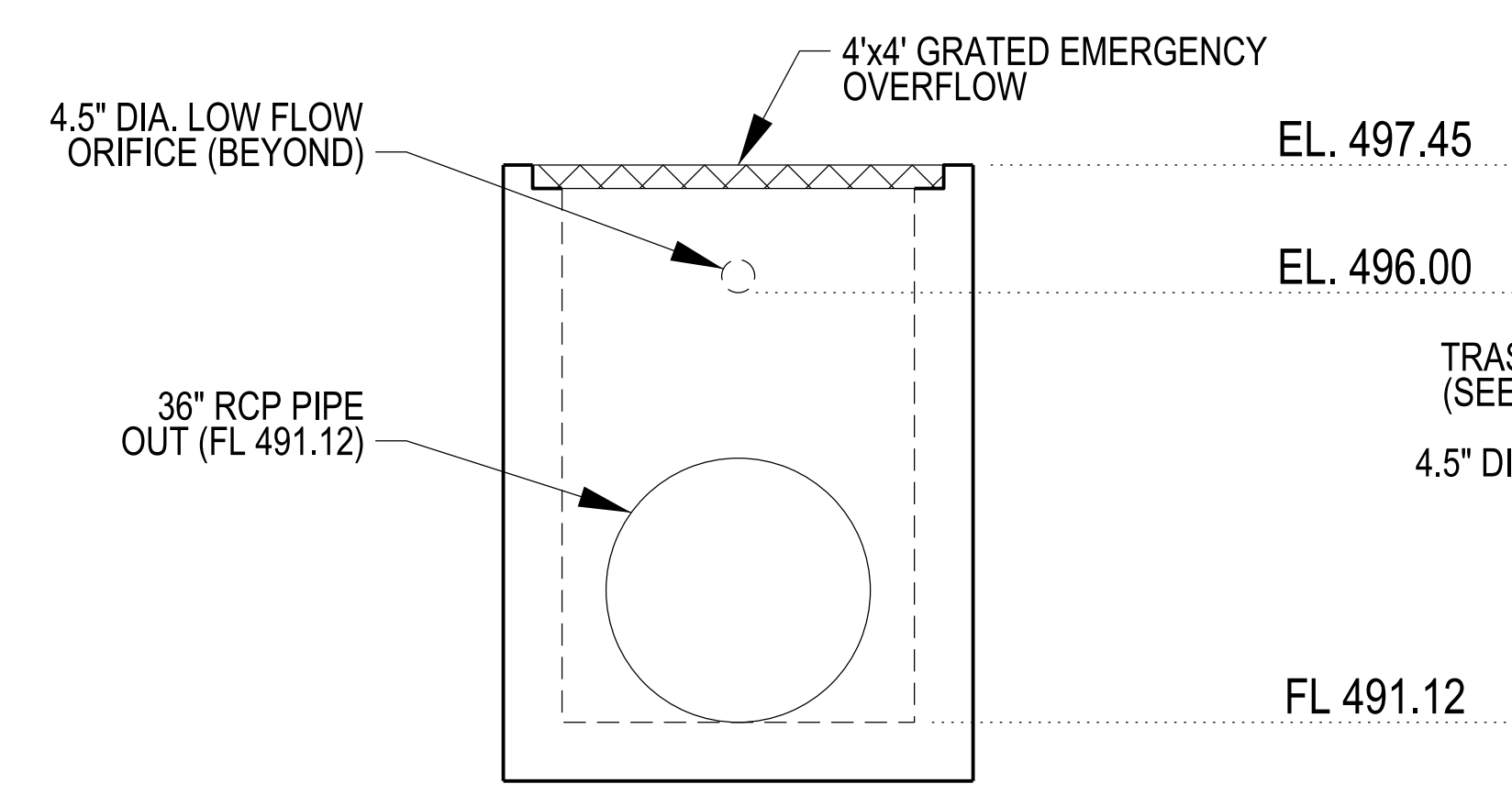
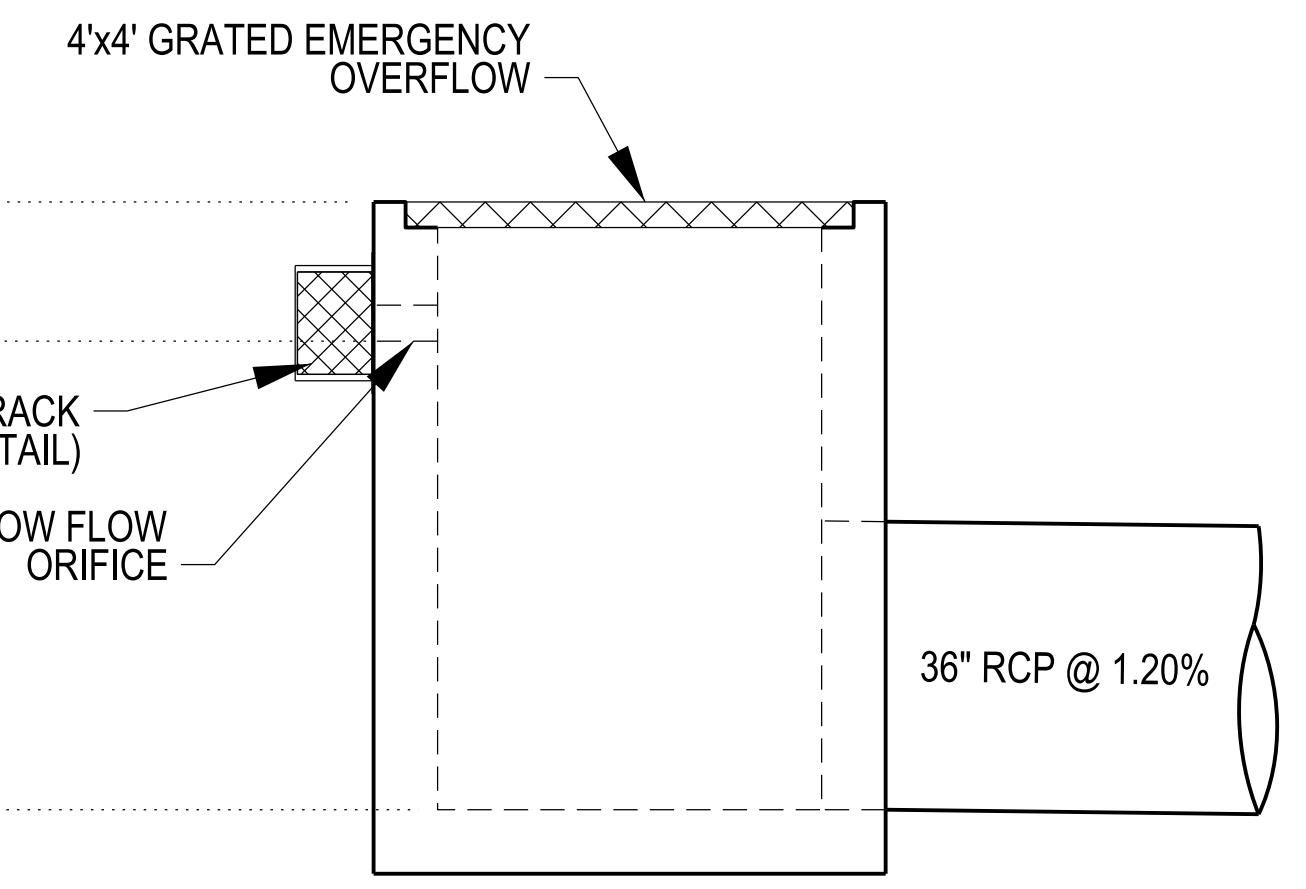


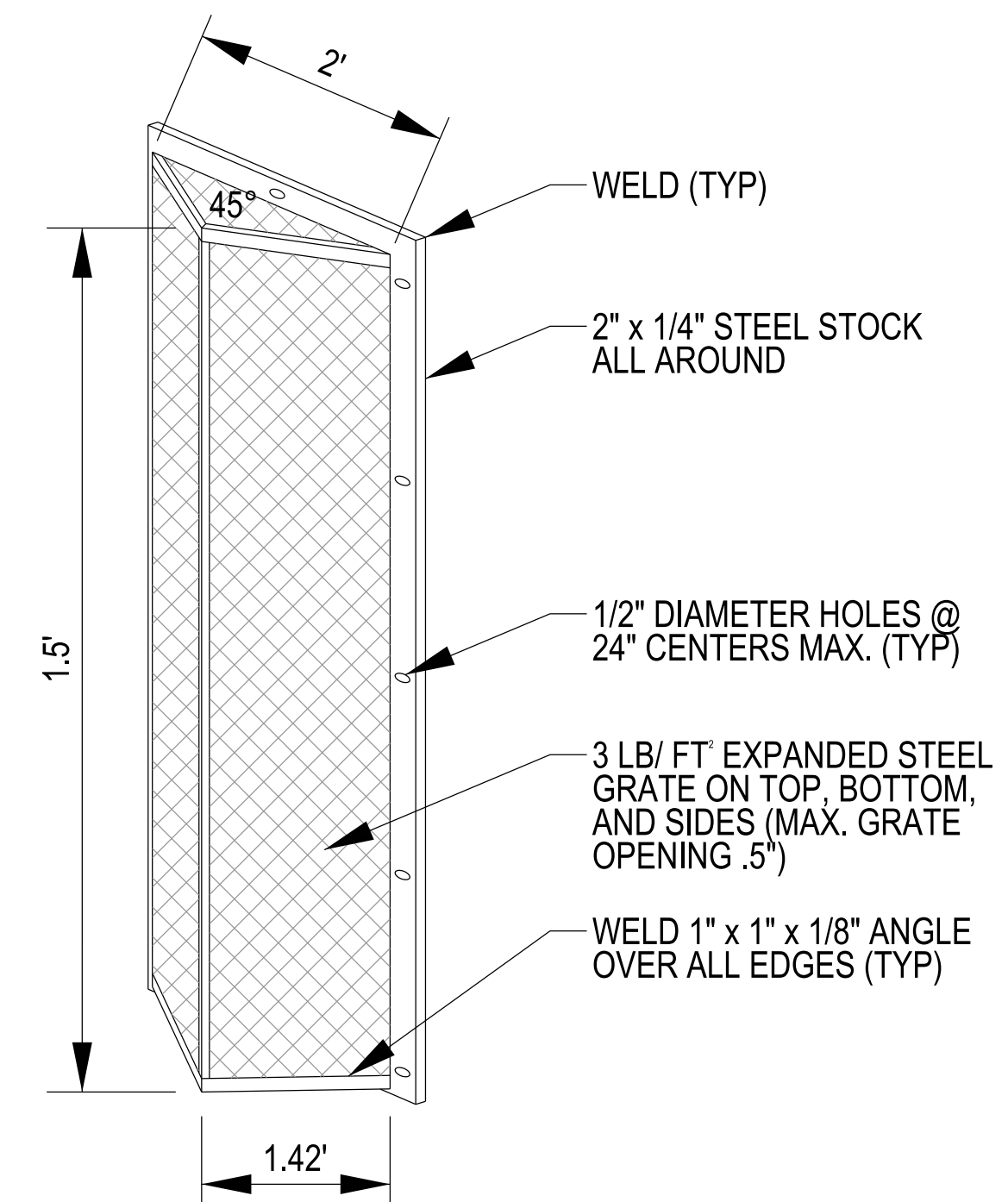
OS 35 TOP VIEW
SCALE: 1" = 2'



SECTION A-A
SCALE: 1" = 2'

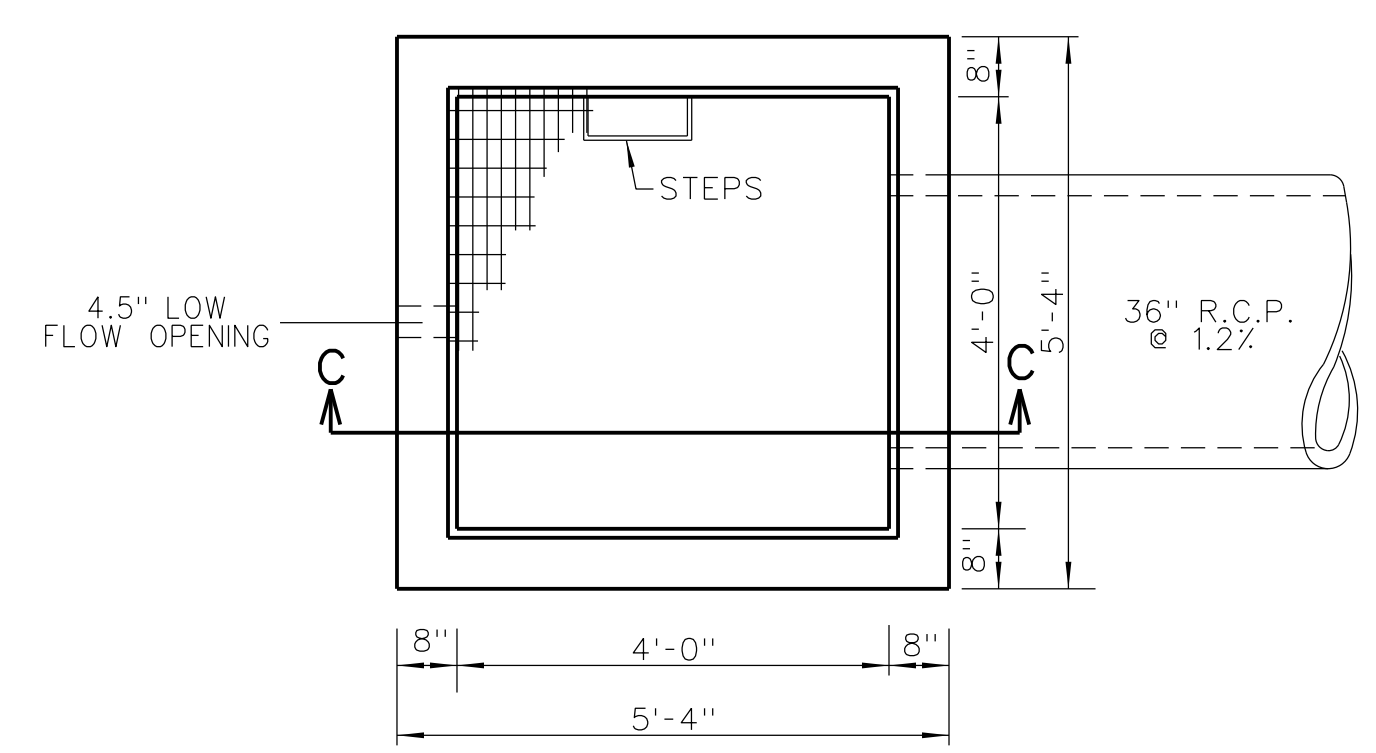


SECTION B-B
SCALE: 1" = 2'

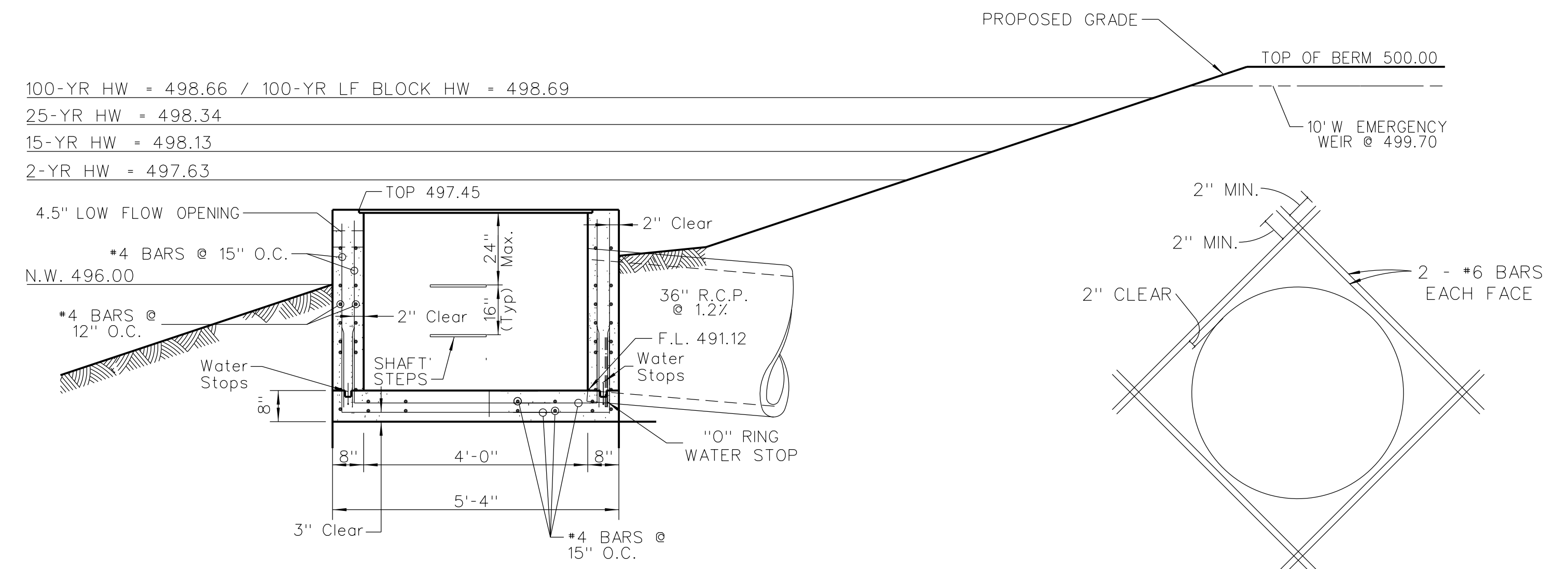


- NOTES FOR TRASH RACK:**
1. TRASH RACK SHALL BE CENTERED OVER OPENING.
 2. STEEL TO CONFORM TO ASTM-36.
 3. ALL SURFACES SHALL BE COATED WITH ZRC COLD GALVANIZING COMPOUND AFTER WELDING.
 4. TRASH RACK SHALL BE FASTENED TO THE WALL WITH 1/2" MASONRY ANCHORS. TRASH RACK SHALL BE REMOVEABLE.

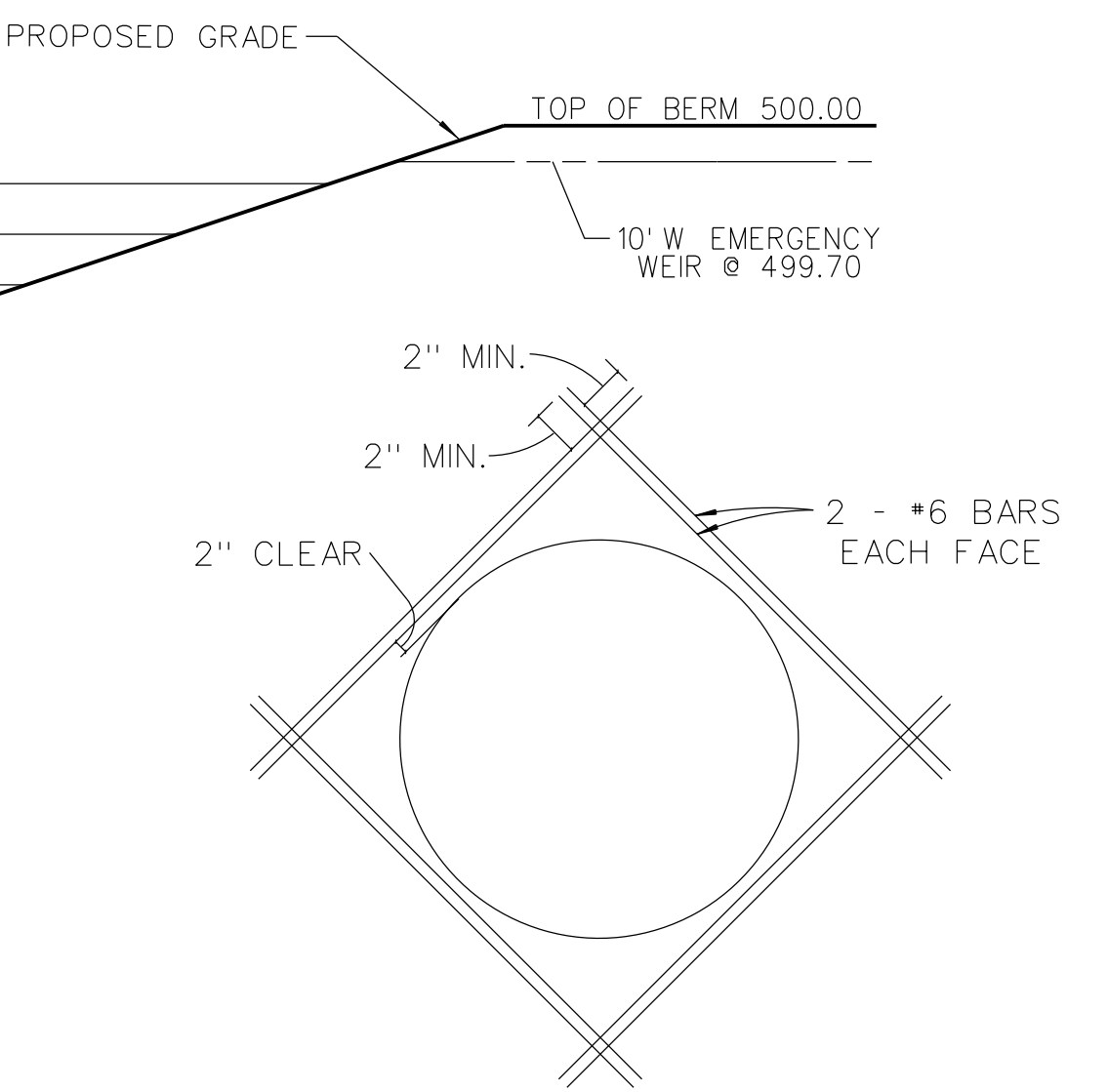
TRASH RACK DETAIL
(OR APPROVED EQUAL)
N.T.S.



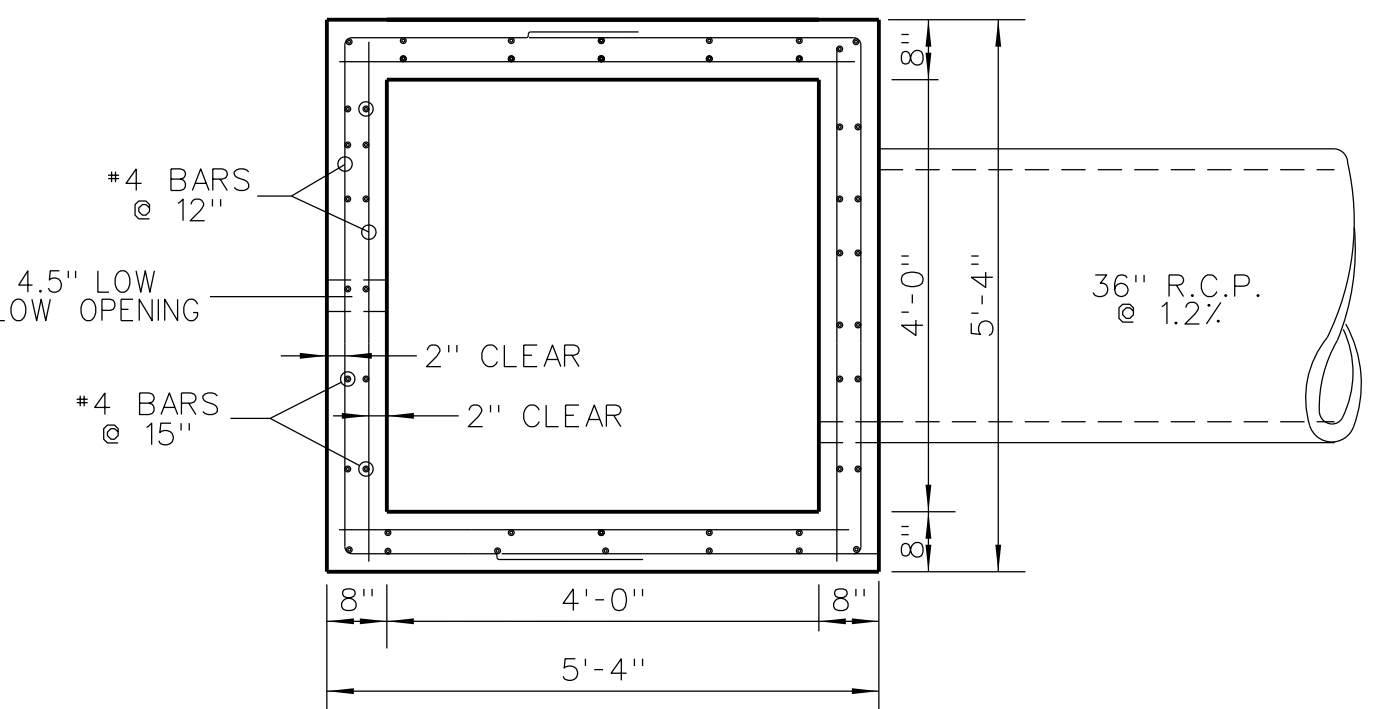
OS 35 TOP VIEW
N.T.S.



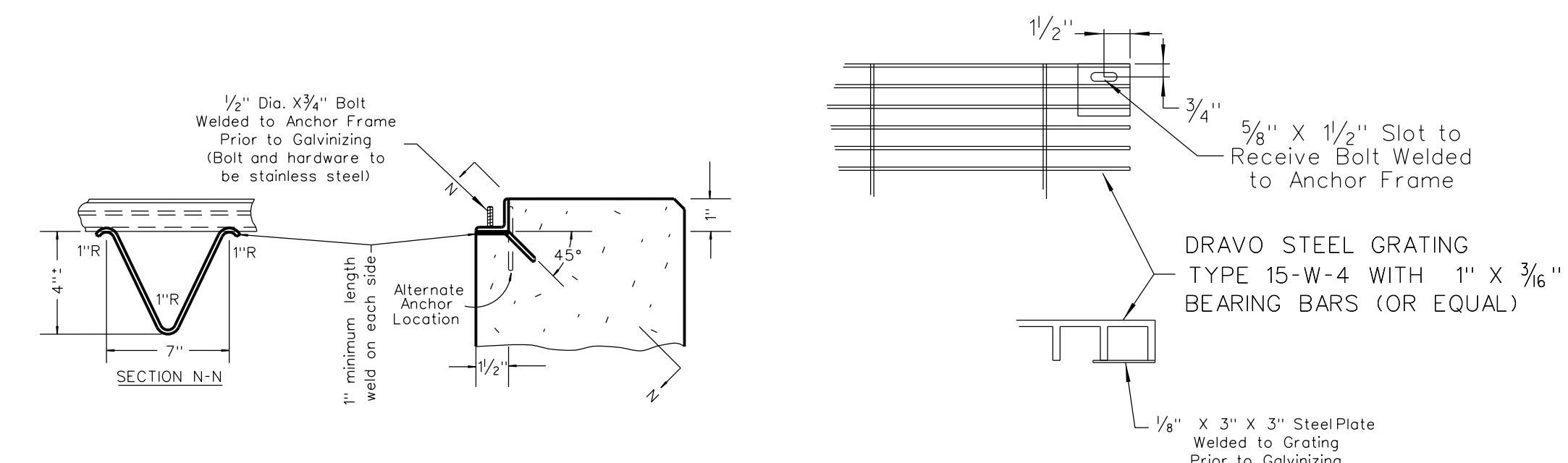
SECTION C-C
OS 35 REINFORCEMENT DETAIL
N.T.S.



REINFORCEMENT AROUND OPENING
N.T.S.



OS 35 TOP VIEW REINFORCEMENT DETAIL
N.T.S.



DETAIL OF CONTINUOUS ANCHOR FOR ANGLE SEAT & BOLT DOWN GRATE
N.T.S.

- CONSTRUCTION NOTES:**
1. Concrete for the structure shall be "air entrained" and contain at least 6 sacks Class "A" Portland Cement per cubic yard. The concrete shall be placed at a slump of 4 inches +/- 1/2 inch. The concrete shall be proportioned and transported in accordance with ASTM C-94.
 2. Reinforcing steel shall conform to ASTM C-615-60 with deformations conforming to ASTM A-305 and shall have a minimum cover of 2 inches except for 3 inches where concrete is poured against earth.
 3. Laps and/or splices in reinforcing steel shall be a minimum of 30 bar diameters.
 4. Keyed joints shown are to be 2-inch x 2-inch keyed construction joints.
 5. $f_s = 24,000$ psi.
 6. $f_c = 3,750$ psi.
 7. All exposed edges to have a 3/4-inch chamfer.
 8. Contractor to provide for bypass of stormwater during construction of structure.
 9. All soil specifications shall be directed by soils engineer.

CALL MISSOURI ONE CALL SYSTEMS INC. TWO FULL WORKING DAYS IN ADVANCE OF STARTING

WORK, MISSOURI ONE-CALL 1-800-344-7483

THE UNDERGROUND UTILITIES SHOWN HEREIN WERE PLOTTED FROM AVAILABLE INFORMATION AND DO NOT NECESSARILY REFLECT THE ACTUAL EXISTENCE, OR NON EXISTENCE, SIZE, TYPE, NUMBER, OR LOCATION OF THESE OR OTHER UTILITIES. THE GENERAL CONTRACTOR SHALL BE RESPONSIBLE FOR VERIFYING THE ACTUAL LOCATION OF ALL UNDERGROUND UTILITIES IN THE FIELD, SHOWN OR NOT SHOWN, PRIOR TO ANY GRADING, EXCAVATION, OR CONSTRUCTION OF IMPROVEMENTS. THESE PROVISIONS SHALL IN NO WAY ABSOLVE ANY PARTY FROM COMPLYING WITH THE UNDERGROUND FACILITY SAFETY AND DAMAGE PREVENTION ACT, CHAPTER 319, RSMO.

Design By: R/LH
Drawn By: R/LH
Checked By: R/LH

Permit No. GR22-200001
Vote Project # 22849

10-12-22
C17.1

Lombardo
H · O · M · E · S

10849 Indian Head Indl. Blvd.
St. Louis, Missouri 63132
314.890.1250 Fax
www.volze.com
Volze #203

VOLZE
INCORPORATED
CONSTRUCTION MANAGEMENT

RYAN L. HOLMES
Professional Engineer
PE-2017018988

THE VILLAS AT ARAGON
VETERANS MEMORIAL PARKWAY
OF FALLON, MO 63366

WET RETENTION POND OUTFALL STRUCTURE DETAILS (OS 35)

Project ID: 2109C-S026-00-0001.10
Permit No. GR22-200001
Vote Project # 22849

Design By: R/LH
Drawn By: R/LH
Checked By: R/LH

10-12-22
C17.1