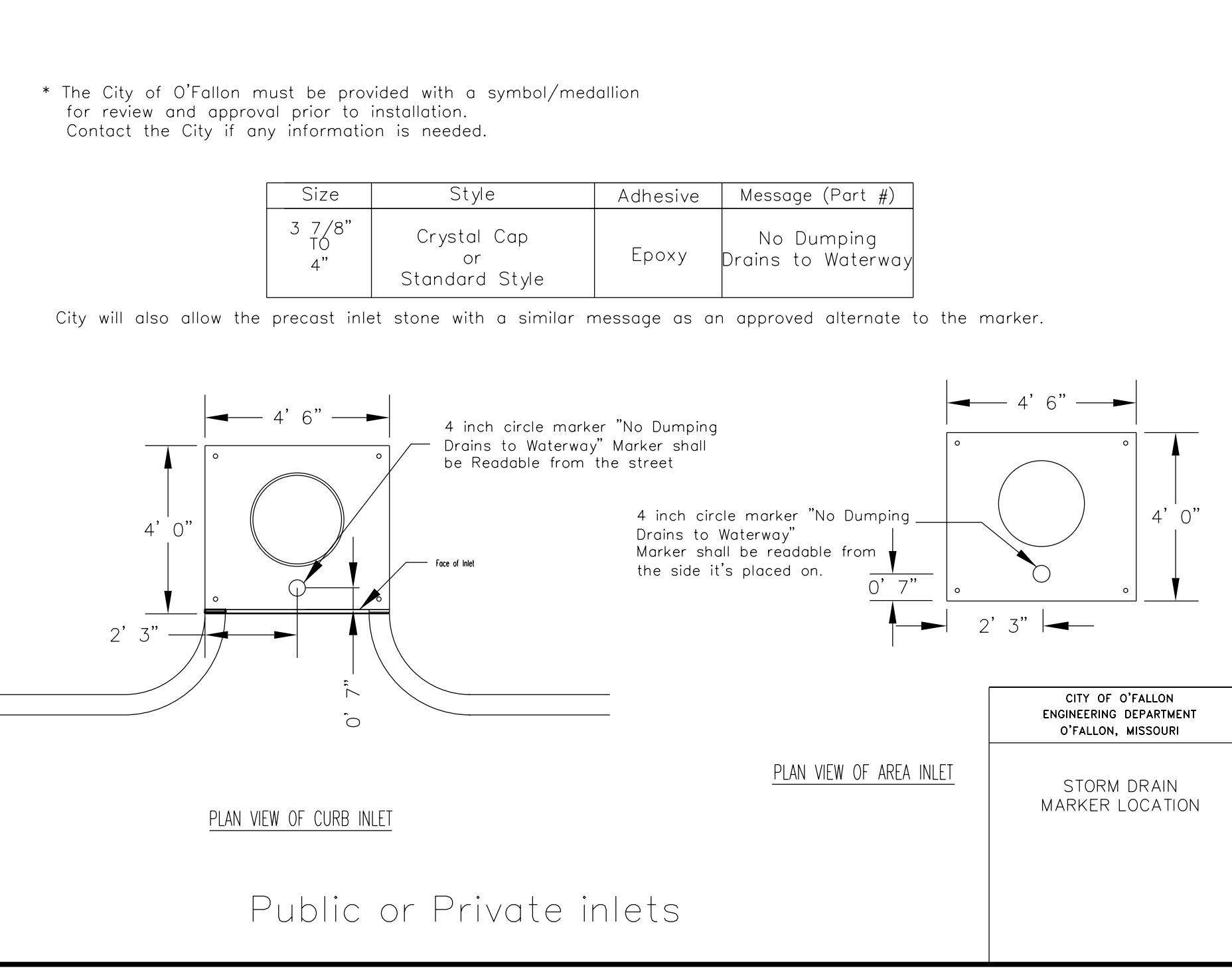
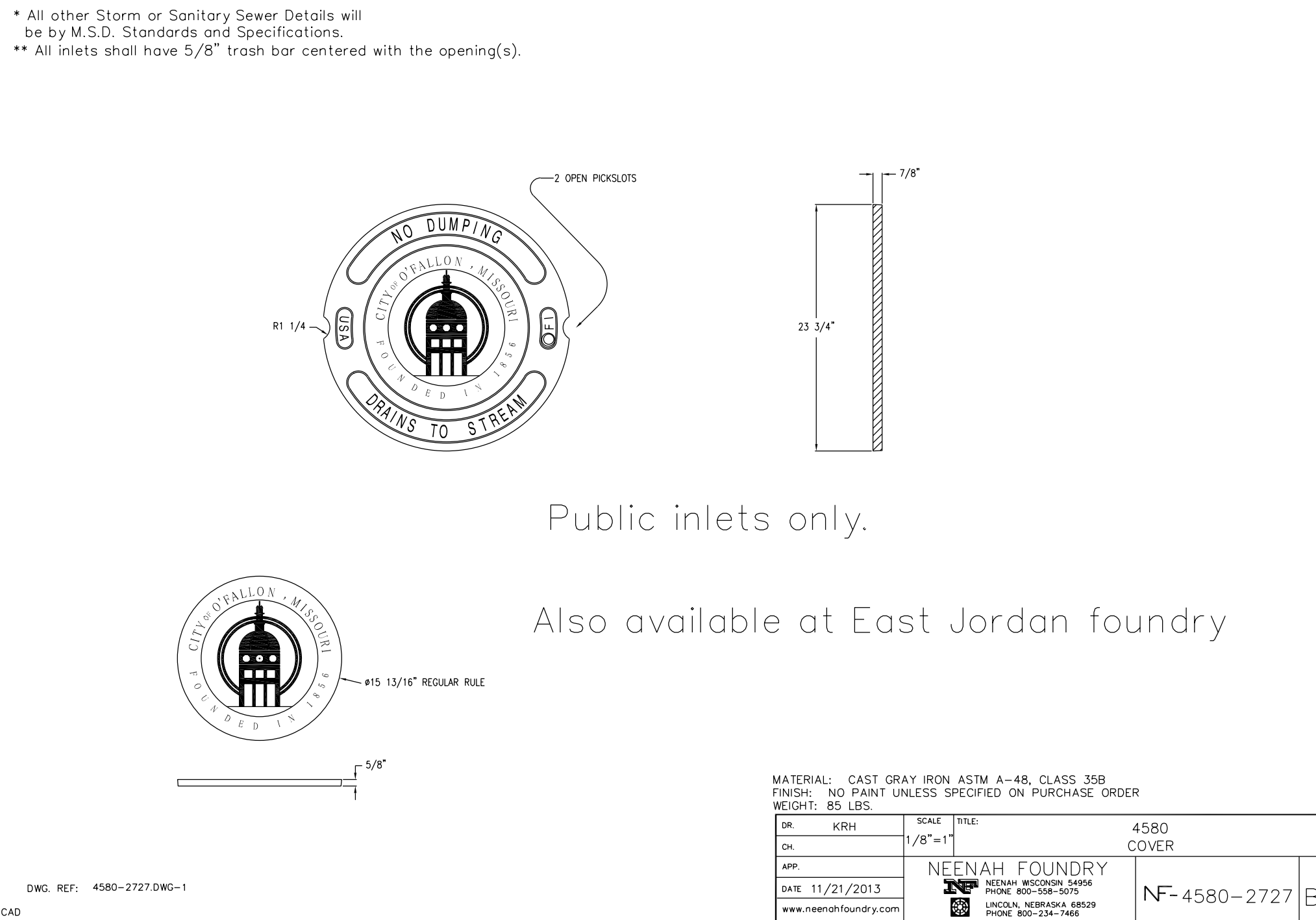
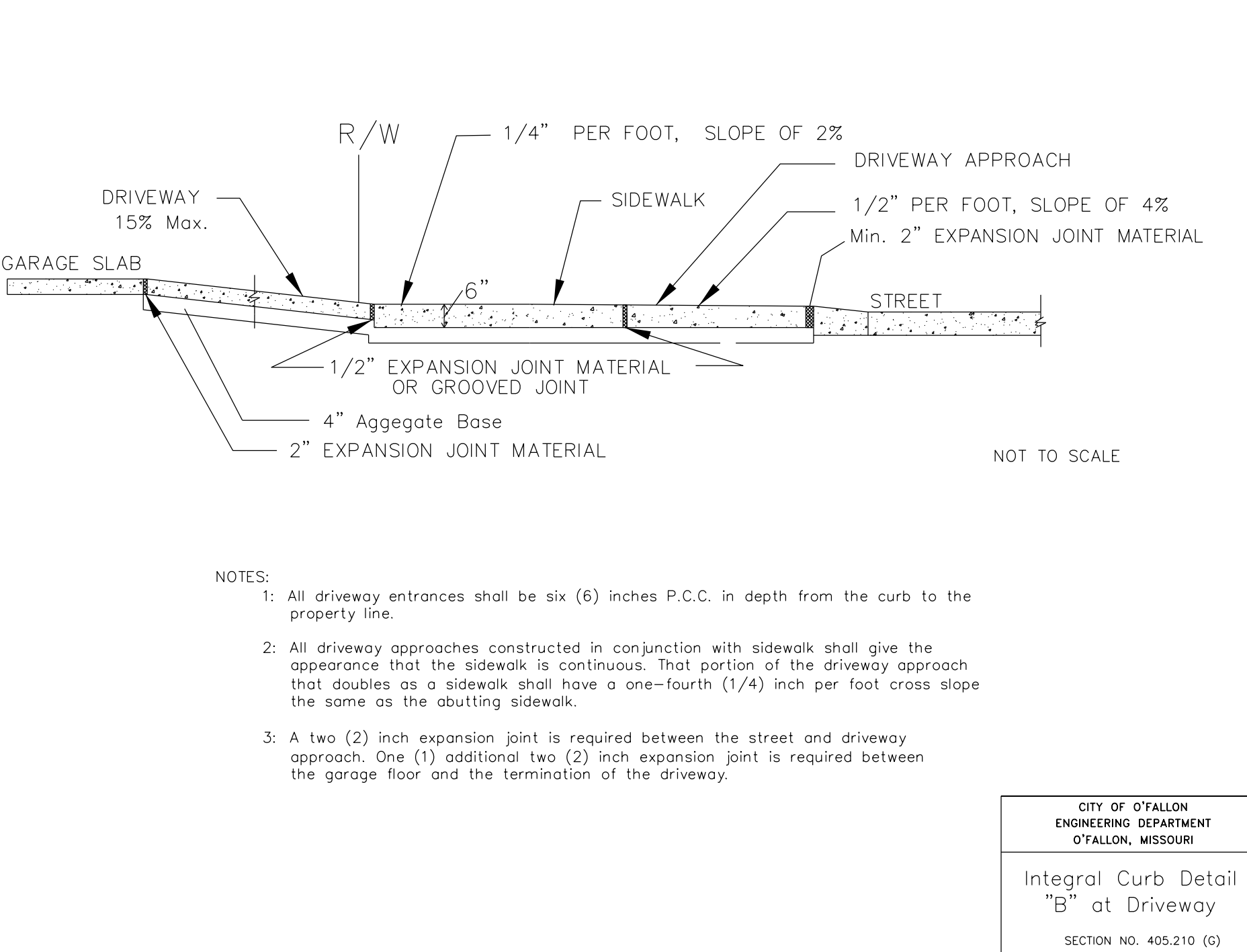
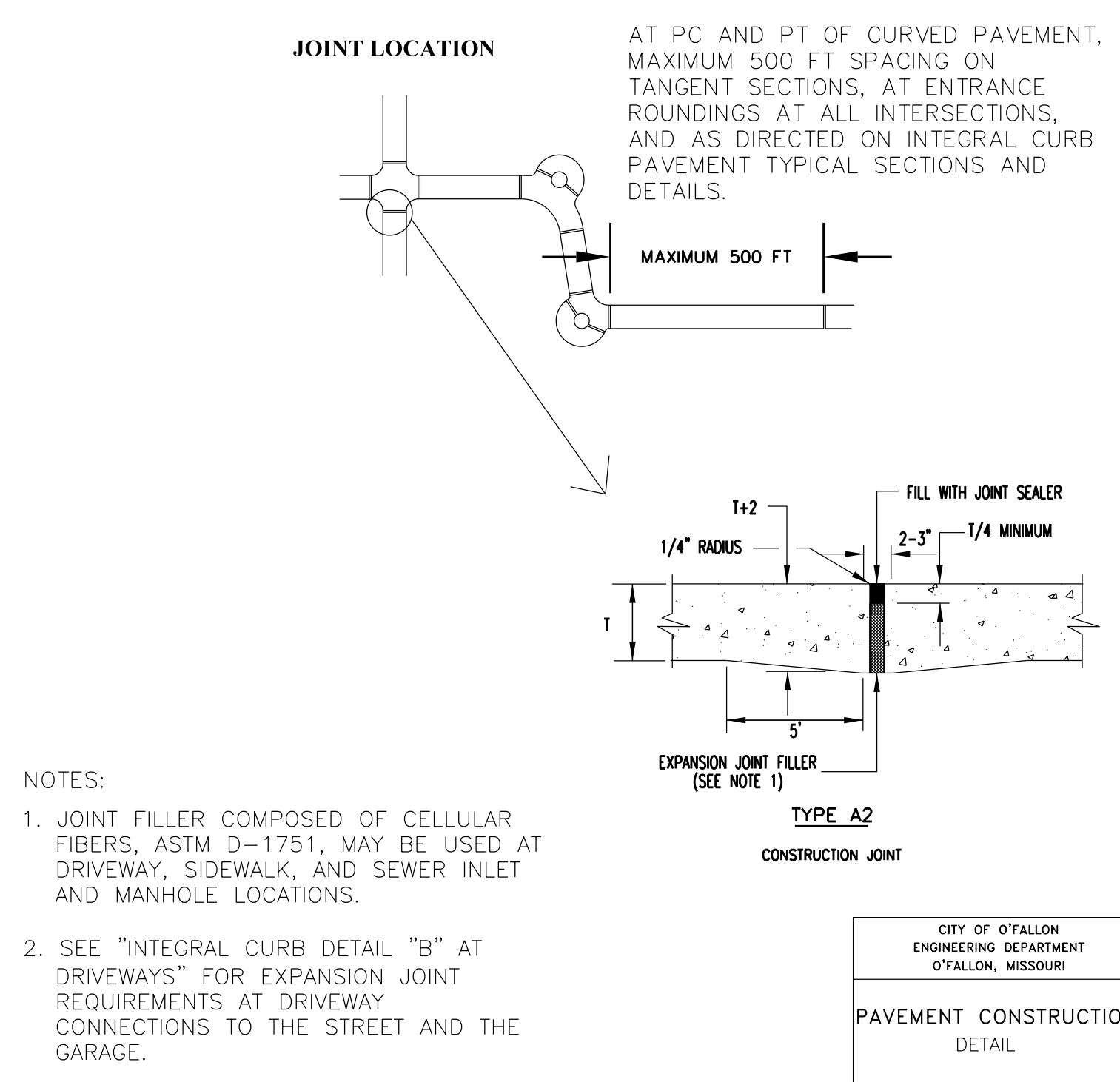


GENERAL NOTES:

- ALL SIGN POST AND BACK OF SIGNS THAT ARE TO BE PAINTED BLACK SHALL USE A PAINT SYSTEM THAT PROVIDES A MINIMUM 7 YEAR LIFE EXPECTANCY. MAY USE: a) CARBOLINE RUSTBOND BASE AT 1-2 MILS THICK, CARBOLINE 893 50" MID-LAYER 1-5 MILS THICK, CARBOLINE 133 HP TOP COAT, OR b) ELECTROSTATIC APPLIED, BLACK POWDER COATED AND BAKED ON PAINT SYSTEM AT 2-3 MILS THICKNESS, OR c) APPROVED EQUAL
- ALL SIGN LOCATIONS AND SIZES MUST BE APPROVED BY THE ENGINEERING DIVISION PRIOR TO INSTALLATION.
- STREET NAME SIGN PLATES SHALL BE 9 INCHES WIDE FLAT, BOLT TOGETHER FOR ANY ARTERIAL INTERSECTIONS AND 6 INCHES WIDE EXTRUDED ALUMINUM PANELS FOR ALL MINOR AND COLLECTOR ROADS. TYPICAL LENGTHS FOR MINOR AND COLLECTOR SIGNS SHALL BE 24, 30 & 36 INCH LENGTHS, OR LONGER AS NEEDED, TO ACCOMMODATE STREET NAME. SIGN LEGEND SHALL BE 7 INCH 3M ENGINEER GRADE SHEETING (OR APPROVED EQUAL) WHITE REFLECTIVE WITH THE CITY OF O'FALLON LOGO WITH 6 IN. BLACK NON-REFLECTIVE LETTERS FOR ARTERIALS, AND 4 IN. SIGN LEGEND FOR MINOR AND COLLECTOR ROADS WITH 4 IN. LETTERS. ALL REFLECTIVE SHEETING SHALL MEET AND OR EXCEED ASTM D 4956 SPEC. TYPE 3 OR HIGHER (HIGH INTENSITY OR DIAMOND GRADE).
- "CLEARVIEW" FONT SHALL BE USED ON ALL STREET SIGNS.
- SIGN POSTS SHALL BE HEAVY "U" CHANNEL (2 LBS/FT) PAINTED BLACK STEEL POSTS FOR COLLECTOR/MINOR STREETS. ARTERIAL STREETS SHALL HAVE 2" SQUARE POSTS WITH BREAKAWAY ASSEMBLY.
- SIGN POSTS SHALL EXTEND A MINIMUM OF 30 INCHES IN THE GROUND AND FLUSH.
- THE CONTRACTOR SHALL BE RESPONSIBLE FOR VERIFICATION OF UNDERGROUND UTILITIES AND STRUCTURES SHOWN OR NOT SHOWN. PLEASE CONTACT CITY FOR LOCATION OF CITY UTILITIES NOT FOUND BY DIG-RITE SERVICES.
- SIGNS SHALL NOT CREATE A SITE DISTANCE PROBLEM OR CONFLICT WITH PEDESTRIAN TRAFFIC.
- SPEED LIMIT SIGNS MUST BE AT EVERY ENTRANCE TO A SUBDIVISION ALONG THE LOT LINE BETWEEN FIRST AND SECOND LOT AND APPROXIMATELY EVERY TWO THOUSAND (2,000) FEET THERE AFTER. ALSO, EVERY CONNECTING SIDE STREET MUST HAVE ONE SPEED LIMIT SIGN APPROXIMATELY FIFTY FEET FROM INTERSECTION AND APPROXIMATELY EVERY TWO THOUSAND FEET (2,000) THERE AFTER.
- ALL SIGNS UNLESS OTHERWISE STATED, SHOULD BE CONSTRUCTED AND INSTALLED PER MUTCD.



* The City of O'Fallon must be provided with a symbol/medallion for review and approval prior to installation. Contact the City if any information is needed.

Size	Style	Adhesive	Message (Part #)
3 7/8" TO 4"	Crystal Cap or Standard Style	Epoxy	No Dumping Drains to Waterway

City will also allow the precast inlet stone with a similar message as an approved alternate to the marker.

Lombardo
H • O • M • E • S

4 Research Park Drive, Suite 130
St. Charles, MO 63034
Phone: (636) 265-2710

VOLZ
INCORPORATED

10849 Indian Head Indl. Blvd.
St. Louis, Missouri 63132
314.860.1250 Fax
www.volzinc.com
Alicia #203

RYAN L. HOLMES
Professional Engineer
PE-2017018988

THE VILLAS AT ARAGON
VETERANS MEMORIAL PARKWAY
O'FALLON, MO 63366

**CONSTRUCTION DETAILS:
SHEET 3**

Permit ID: 2-056C-S026-00-001.10
Permit No. GR22-00001
Volz Project # 22649

Design By: RLH
Drawn By: RLH
Checked By: RLH

10-12-22
C22.2