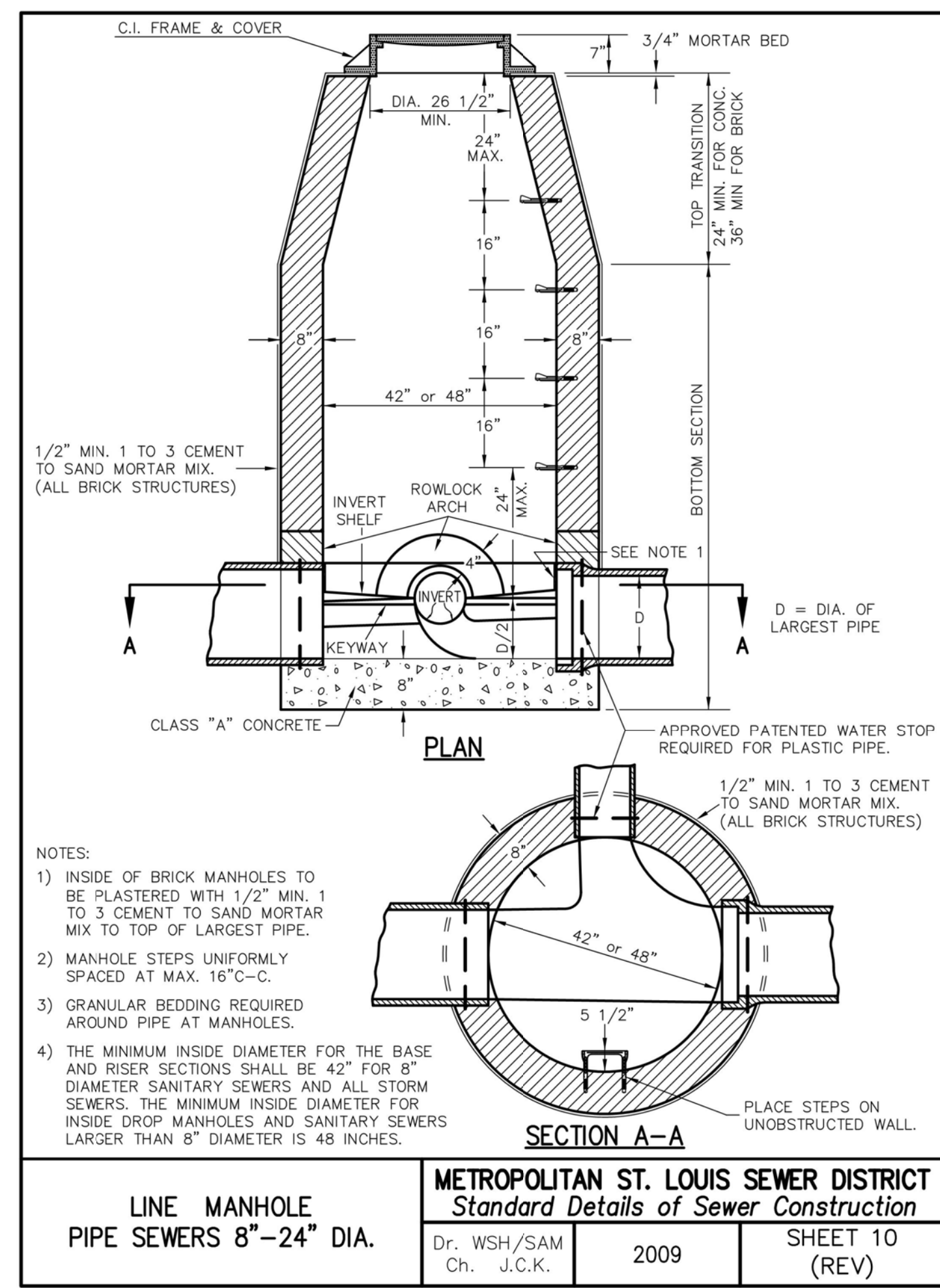
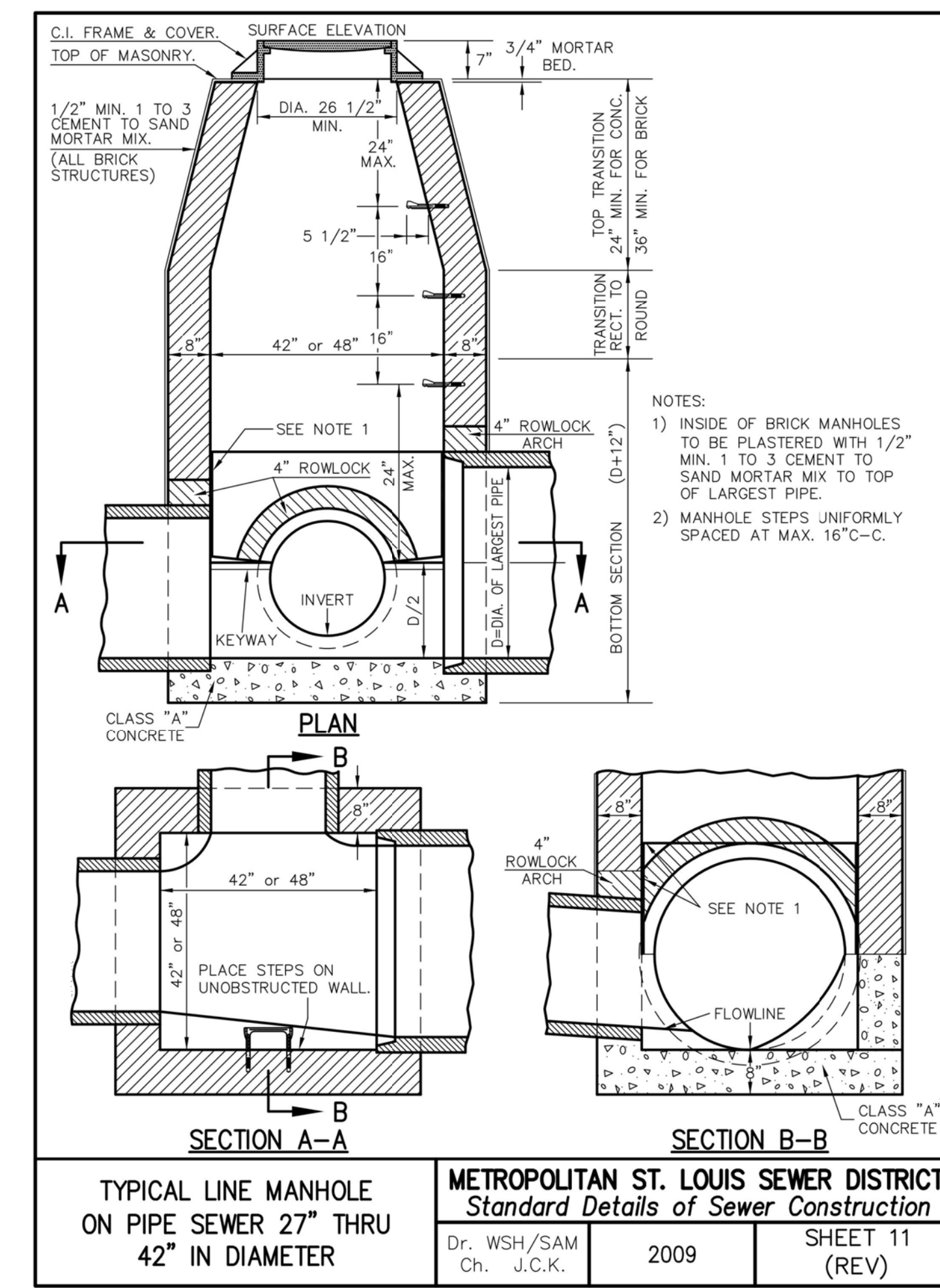


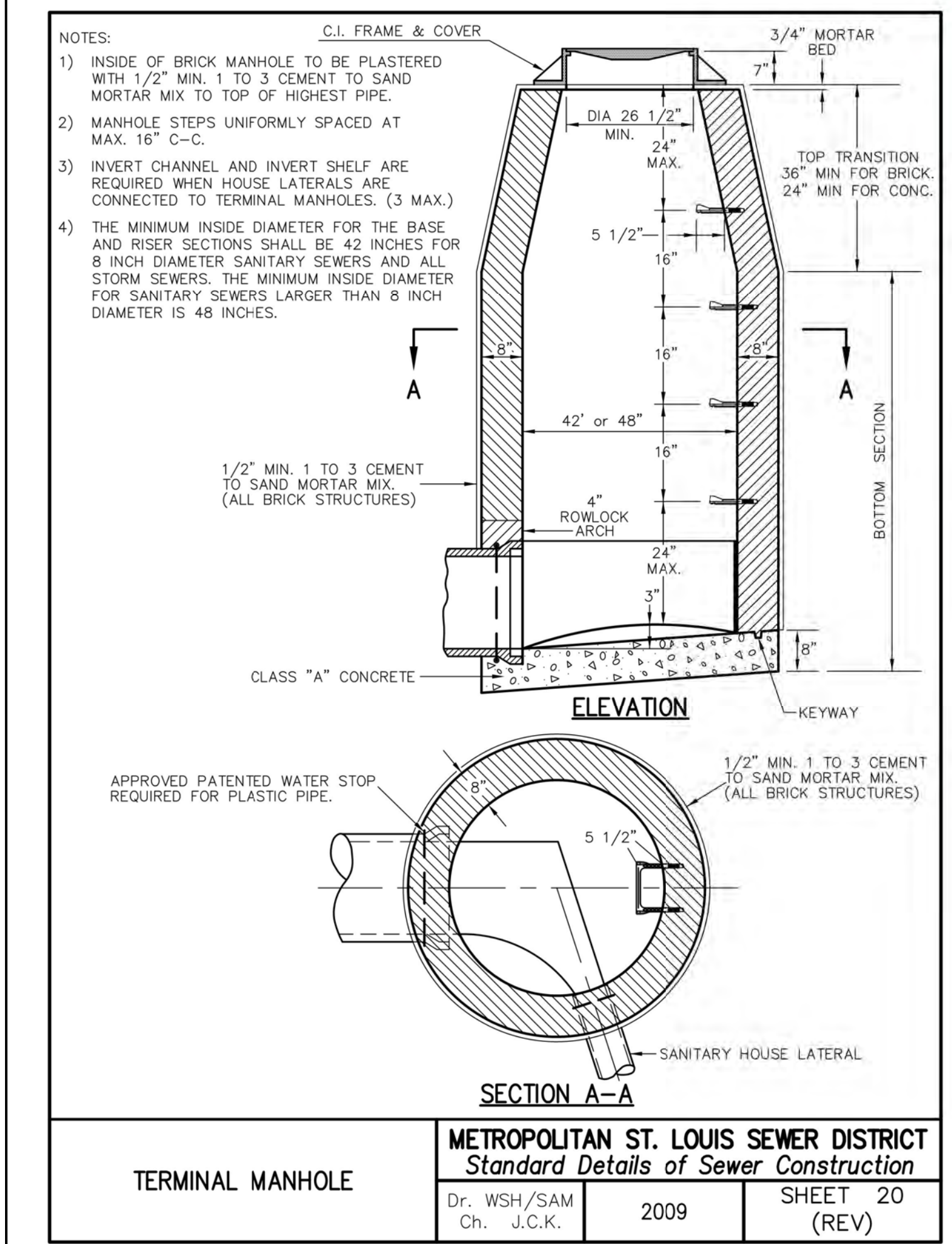
PRECAST CONCRETE MANHOLE	METROPOLITAN ST. LOUIS SEWER DISTRICT <i>Standard Details of Sewer Construction</i>		
	Dr. WSH/SAM Ch. J.C.K.	2009	SHEET 21 (REV)



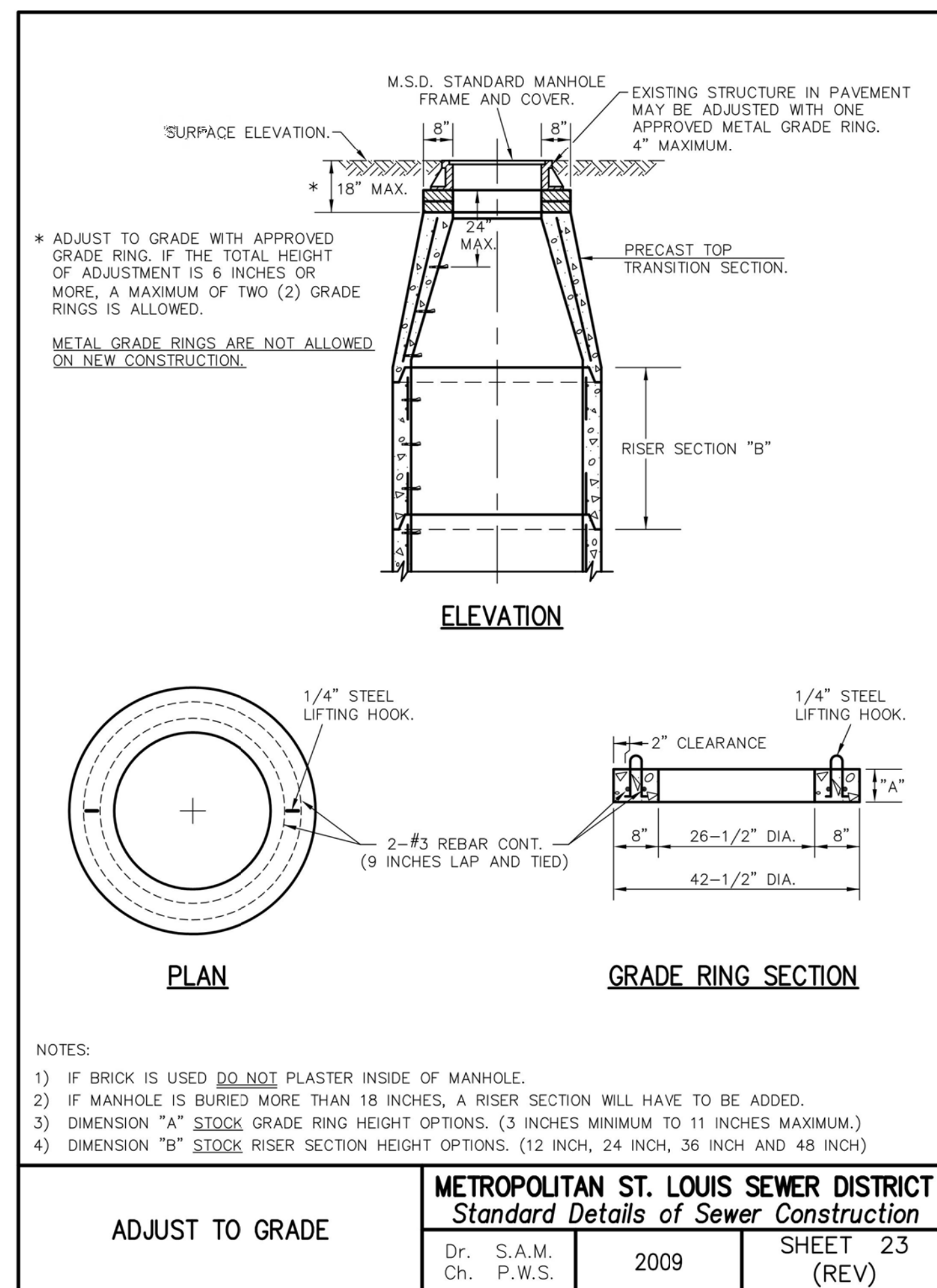
LINE MANHOLE PIPE SEWERS 8"-24" DIA.	METROPOLITAN ST. LOUIS SEWER DISTRICT <i>Standard Details of Sewer Construction</i>		
	Dr. WSH/SAM Ch. J.C.K.	2009	SHEET 10 (REV)



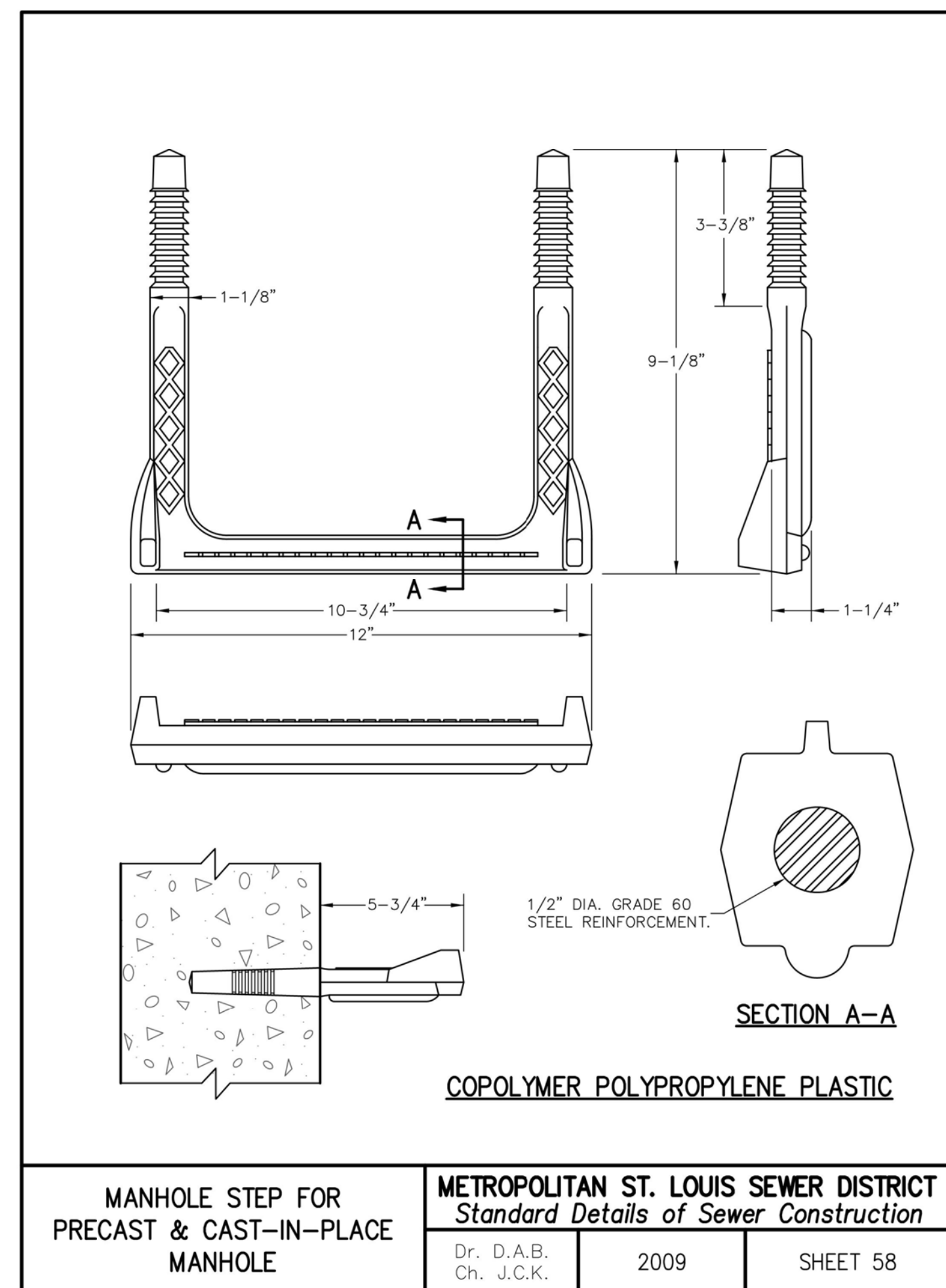
TYPICAL LINE MANHOLE ON PIPE SEWER 27" THRU 42" IN DIAMETER	METROPOLITAN ST. LOUIS SEWER DISTRICT <i>Standard Details of Sewer Construction</i>		
	Dr. WSH/SAM Ch. J.C.K.	2009	SHEET 11 (REV)



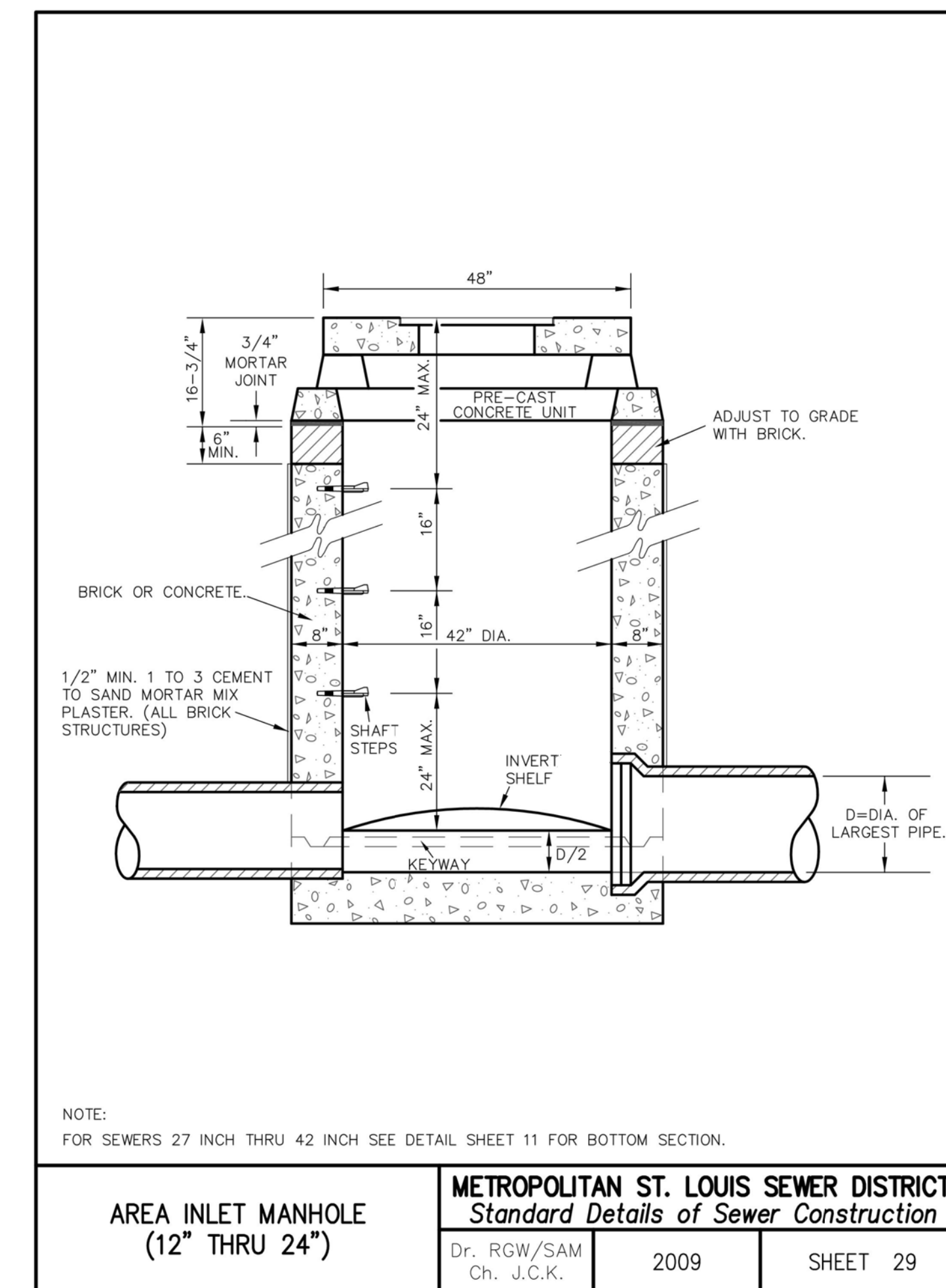
TERMINAL MANHOLE	METROPOLITAN ST. LOUIS SEWER DISTRICT <i>Standard Details of Sewer Construction</i>		
	Dr. WSH/SAM Ch. J.C.K.	2009	SHEET 20 (REV)



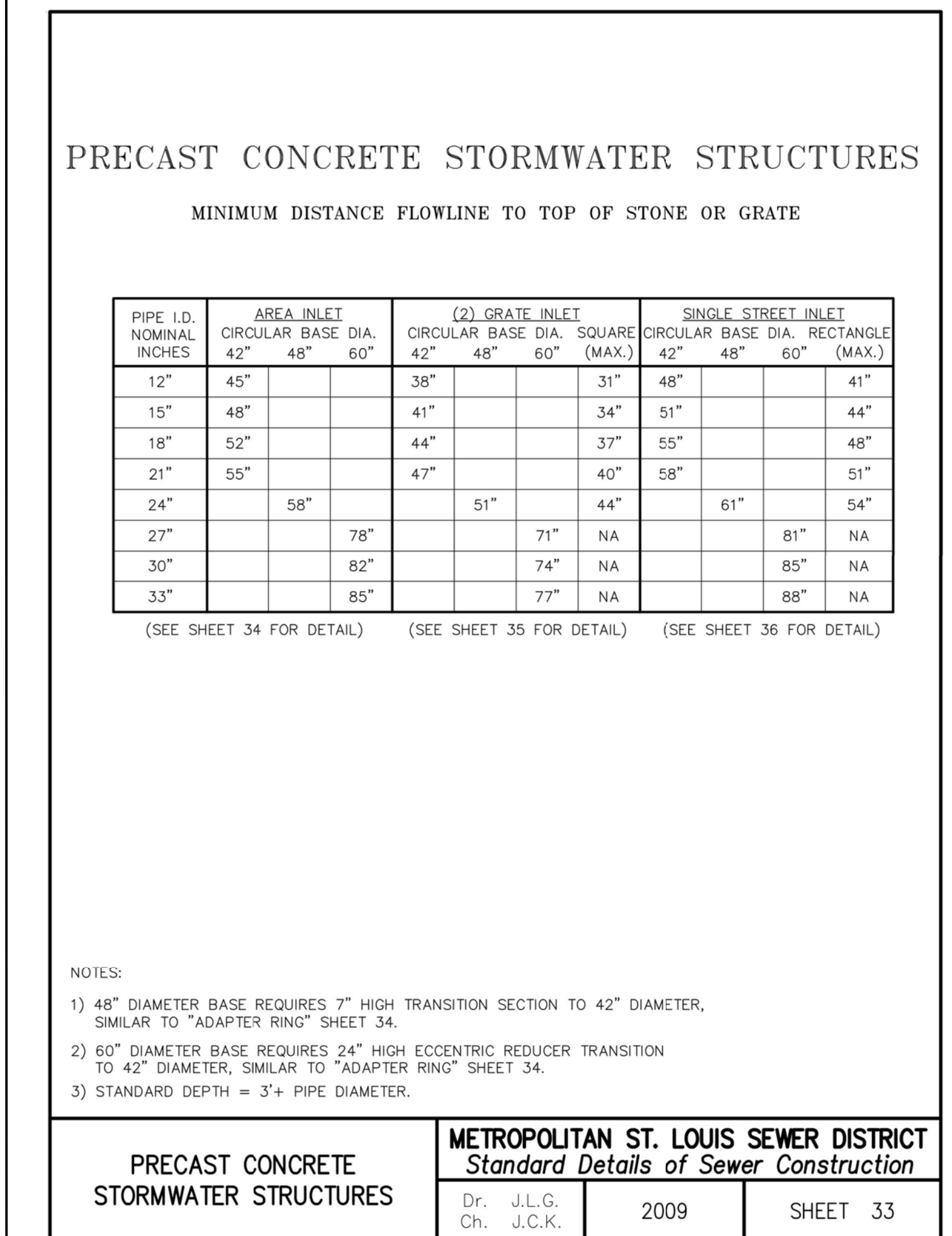
ADJUST TO GRADE	METROPOLITAN ST. LOUIS SEWER DISTRICT <i>Standard Details of Sewer Construction</i>		
	Dr. S.A.M. Ch. P.W.S.	2009	SHEET 23 (REV)



MANHOLE STEP FOR PRECAST & CAST-IN-PLACE MANHOLE	METROPOLITAN ST. LOUIS SEWER DISTRICT <i>Standard Details of Sewer Construction</i>		
	Dr. D.A.B. Ch. J.C.K.	2009	SHEET 58



AREA INLET MANHOLE (12" THRU 24")	METROPOLITAN ST. LOUIS SEWER DISTRICT <i>Standard Details of Sewer Construction</i>		
	Dr. RGW/SAM Ch. J.C.K.	2009	SHEET 29



PRECAST CONCRETE STORMWATER STRUCTURES	METROPOLITAN ST. LOUIS SEWER DISTRICT <i>Standard Details of Sewer Construction</i>		
	Dr. J.L.G. Ch. J.C.K.	2009	SHEET 33

GENERAL NOTES

1. ALL NON-REINFORCED CONCRETE SHALL BE 4,000 PSI AT 28 DAYS.

Lombardo
H.O.M.E.S.
4 Research Park Drive, Suite 120
St. Charles, MO 63034
Phone: (636) 265-2710

VOLZ
INCORPORATED
10849 Indian Head Indl. Blvd.
St. Louis, Missouri 63132
314.860.1250 Fax
www.volzinc.com
Aulinity #203

RYAN L. HOLMES
Professional Engineer
PE-2017018988

THE VILLAS AT ARAGON
VETERANS MEMORIAL PARKWAY
OF FALLON, MO 63366

CONSTRUCTION DETAILS:
SHEET 4
Design By: R/LH
Drawn By: R/LH
Checked By: R/LH
Permit No. GR22-00001
Volz Project # 22649
10-12-22
C22.3