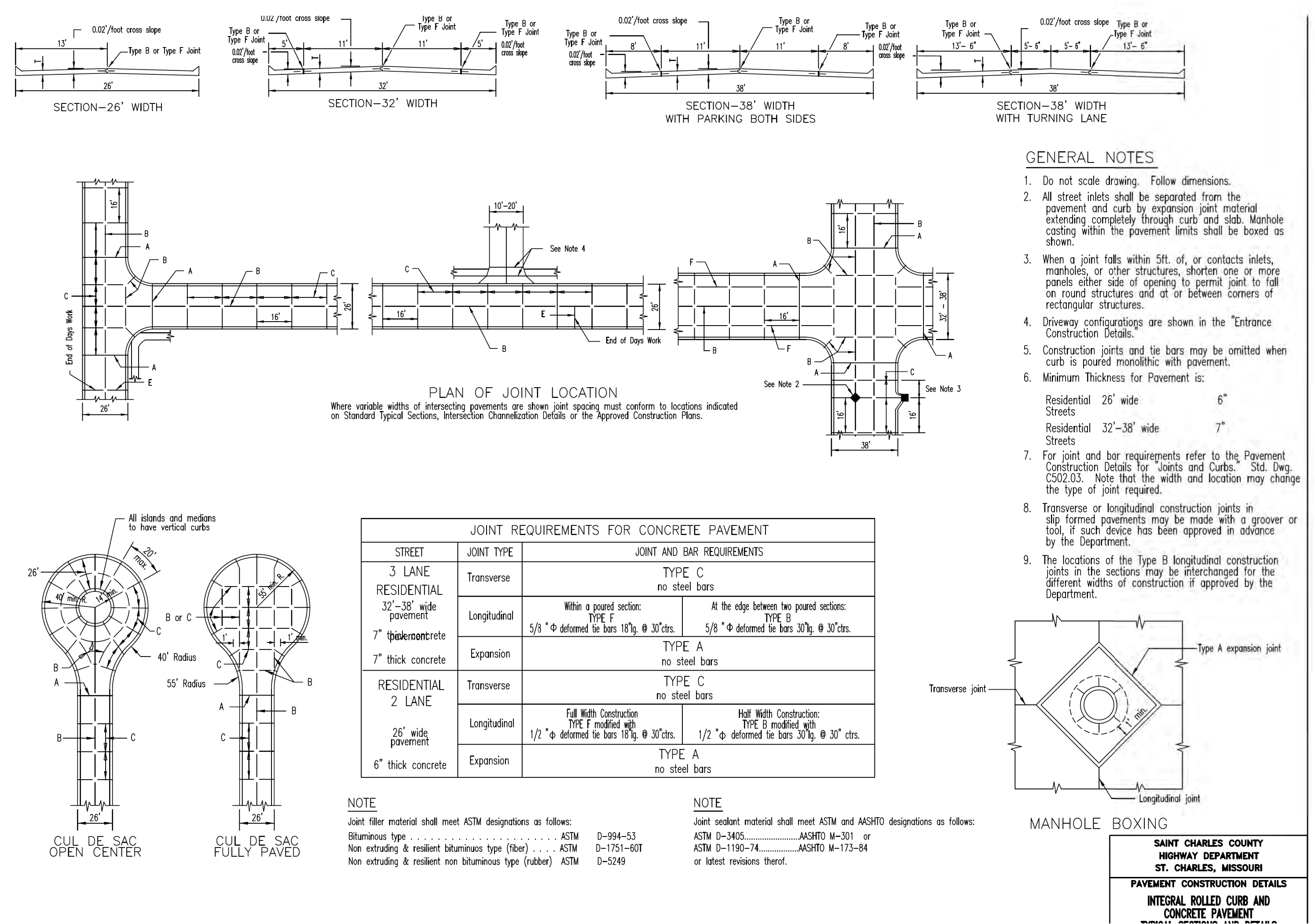


153



**Lombardo**  
H • O • M • E • S

4 Research Park Drive, Suite 130  
St. Charles, MO 63034  
Phone: (636) 265-2710

**VOLZ**  
INCORPORATED

10849 Indian Head Indl. Blvd.  
St. Louis, Missouri 63132  
314.890.1250 Fax  
www.volze.com  
Aulinity #203

**RYAN L. HOLMES**  
Professional Engineer  
PE-2017018988

**THE VILLAS AT ARAGON**  
VETERANS MEMORIAL PARKWAY  
OF FALLON, MO 63366

**CONSTRUCTION DETAILS: SHEET 6**

Permit ID: 2-056C-S026-00-0001.10  
Permit No. GR22-00001  
Volz Project # 22649

Design By: RLH  
Drawn By: RLH  
Checked By: RLH

10-12-22  
C22.5

