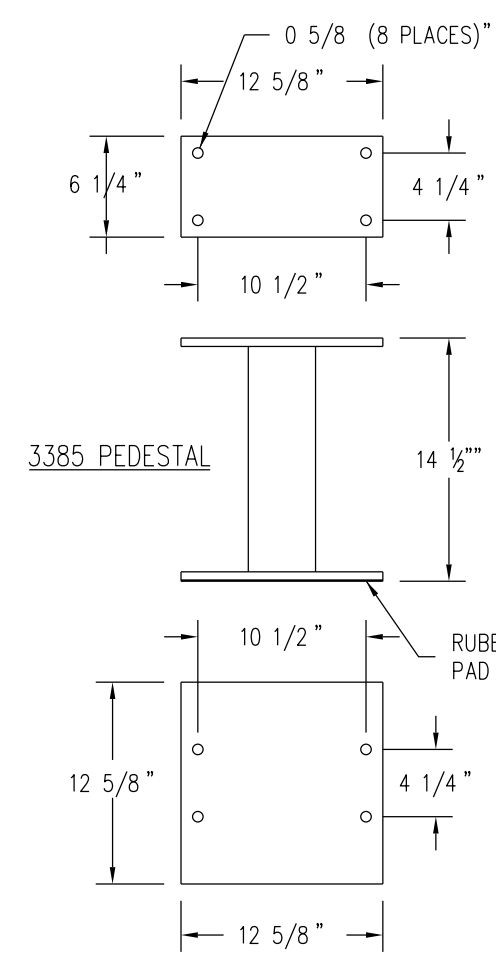
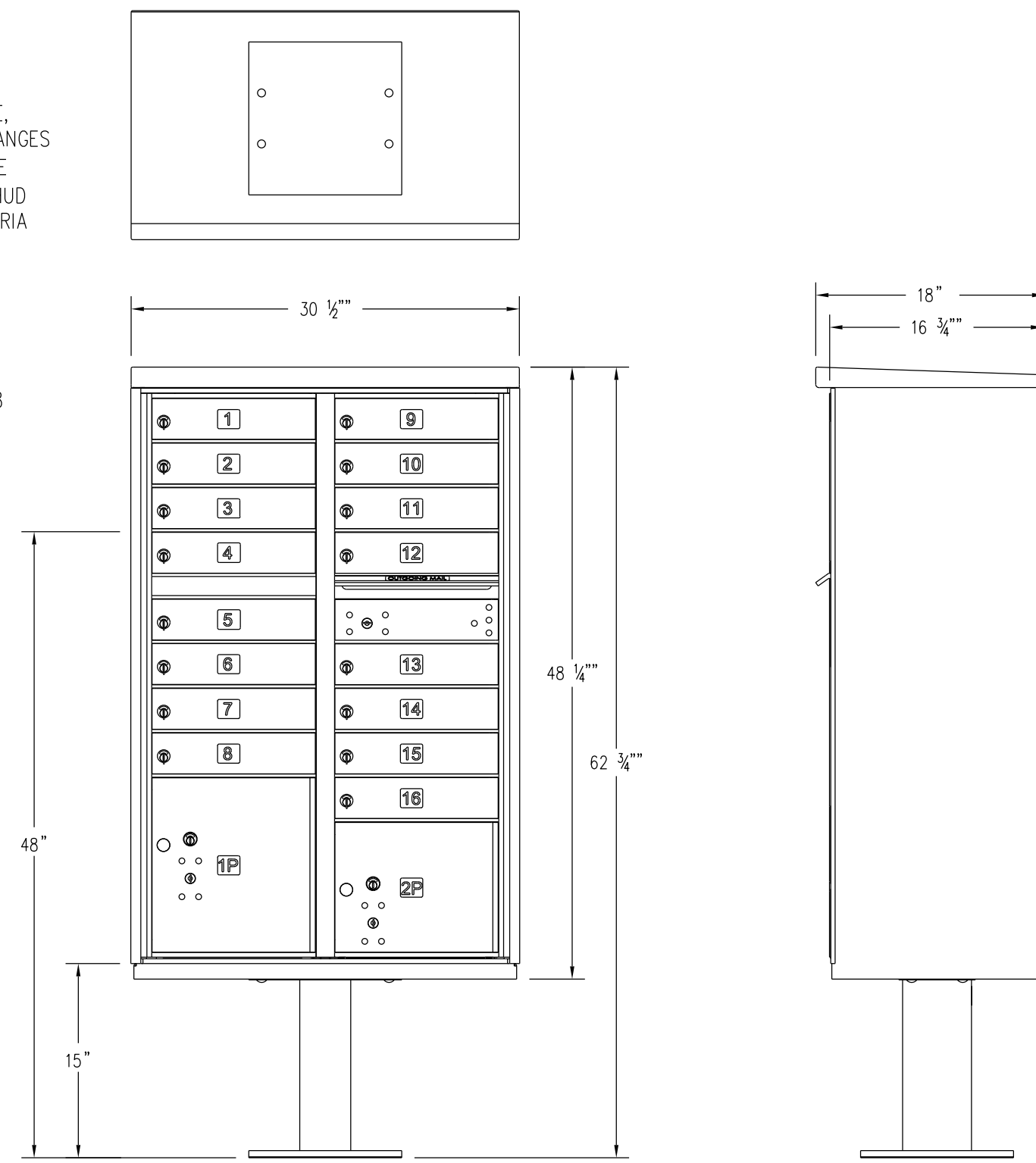


NOTE: PLEASE BE AWARE THAT USPS REQUIREMENTS FOR THE LOWEST MAILBOXES MAY BE MORE STRINGENT THAN THE LOW REACH RANGE REQUIREMENT OF ACCESSIBILITY CODES AND STANDARDS.

ALL MAILBOXES SERVING COVERED DWELLING UNITS MUST BE ON AN ACCESSIBLE ROUTE, HAVE CLEAR FLOOR SPACE FOR APPROACH, BE LOCATED WITHIN ACCESSIBLE REACH RANGES (BETWEEN 15 INCHES MINIMUM AND 54 INCHES MAXIMUM ABOVE THE FLOOR), AND HAVE ACCESSIBLE CONTROLS AND OPERATING MECHANISMS. (GROSSO, LYNN. LETTER FROM HUD DIRECTOR, OFFICE OF ENFORCEMENT, TO POSTAL SERVICE ATTORNEY. RECEIVED BY MARIA INFANGER. MAY 20, 2008.)



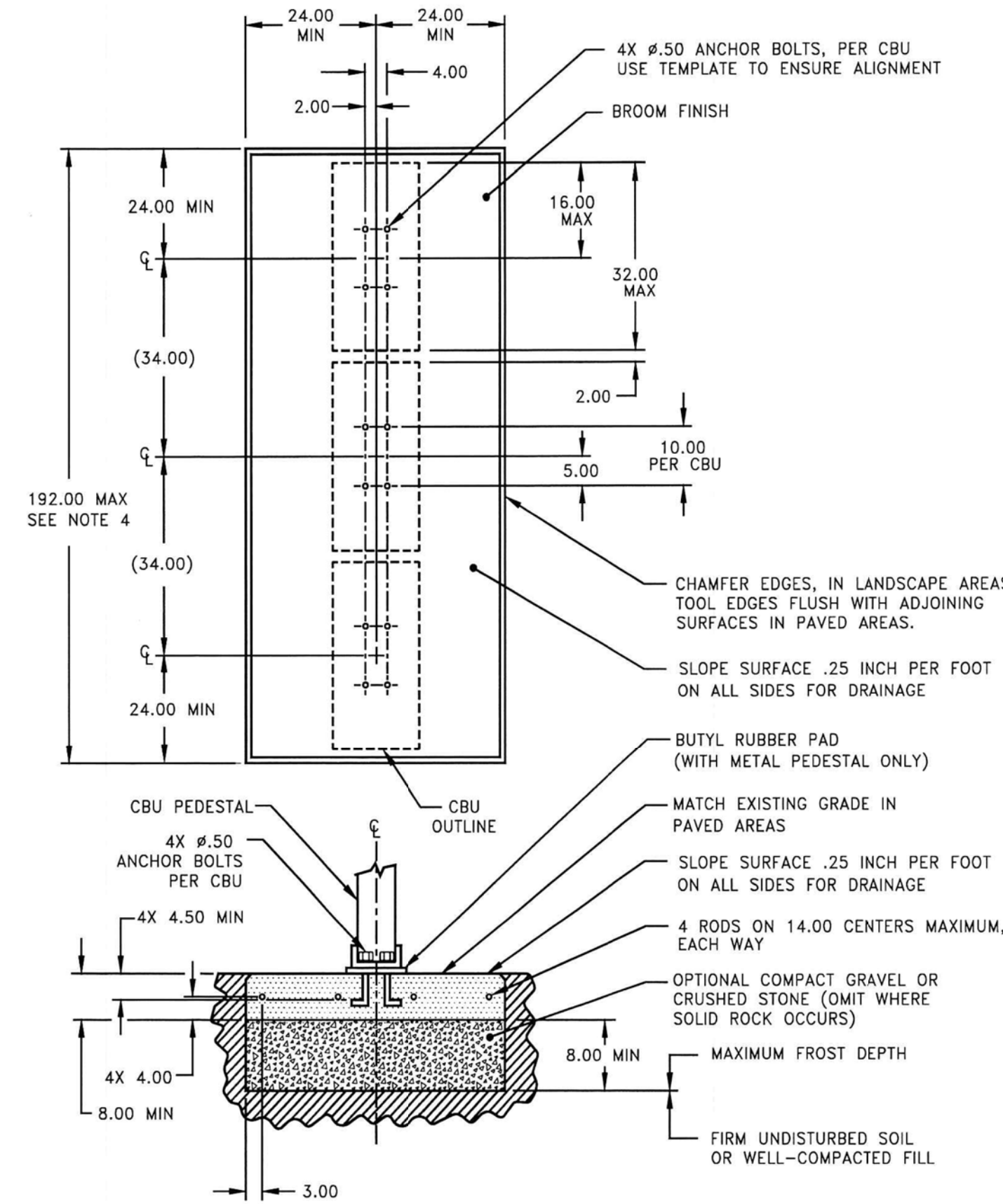
NOTE: MAILBOX UNIT NUMBERS 4-8 AND 12-16 ARE WITHIN ACCEPTABLE REACH RANGES FOR ADA COMPLIANCE.



DESIGN	DLM		1010 E. 62nd Street Los Angeles, CA 90001 Phone: (800) 624-5269 Fax: (800) 624-5299 email: engineering@mailboxes.com	CLUSTER BOX UNITS 3300 SERIES "F" CBUs AVAILABLE FOR USPS ACCESS OR PRIVATE ACCESS	MODEL	3316
DATE	4/5/2010				DRAWING NO.	CAD_3316
CAD FILE	SCALE				1 : 1	

OR USPS APPROVED EQUAL

USPS APPROVED SPECIFICATIONS – CONCRETE PAD (MULTIPLE UNIT)



- NOTES:
- CONCRETE SHALL HAVE A COMPRESSIVE STRENGTH OF 3000 PSI @ 28 DAYS, CONTAIN 4% MIN - 6% MAX AIR ENTRAINMENT AND BE PLACED WITH A 3.50 - 4.50 SLUMP IN ACCORDANCE WITH ACI 301.
 - REINFORCING STEEL RODS SHALL CONFORM TO ASTM A615, GRADE 60.
 - ANCHOR BOLTS SHALL CONFORM TO ASTM A193, GRADE 888, TYPE 316 STAINLESS STEEL.
 - A 3 CBU CONFIGURATION IS DEPICTED. A 2 OR 4 CBU CONFIGURATION MAY BE USED AS LONG AS THEY ARE ARRANGED IN GROUPS SUCH THAT THE OVERALL DIMENSION OF THE CONCRETE BASE DOES NOT EXCEED 192 INCHES.

CLUSTER BOX UNIT (CBU)
-ANCHORING METHODS-

CBU's must be level and mounted firmly in concrete, using one of the following methods.

- The J-bolt method is the preferred method of installation of CBU's on concrete pads; however, the J-bolt pattern must be accurate with the CBU pedestal plate. When using J-bolts, in order to prevent any damage or accidents that could result from the exposed bolts, consideration should be given as to the time lapse between pouring the concrete and the actual installation. Expansion anchors must be installed in accordance with the manufacturer's instructions.
- The use of anchor bolts for the installation of CBU's on concrete pads is also acceptable as long as the methods described below are followed.
 - Hilti Kwik bolt II, 1/2" diameter X 5-1/2" overall length
Catalog Number: 000-453-696, KB II 12-512
Stainless Steel Catalog Number: 000-454-744
Minimum embedment in concrete must be no less than 3-1/2"
 - ITW Ramset Redhead Trublot, galvanized, 1/2" diameter X 7" overall length
 - Rawl Stud, 1/2" diameter X 5 1/2" overall length, galvanized.
Catalog Number: 7324
Minimum embedment in concrete must be no less than 4"

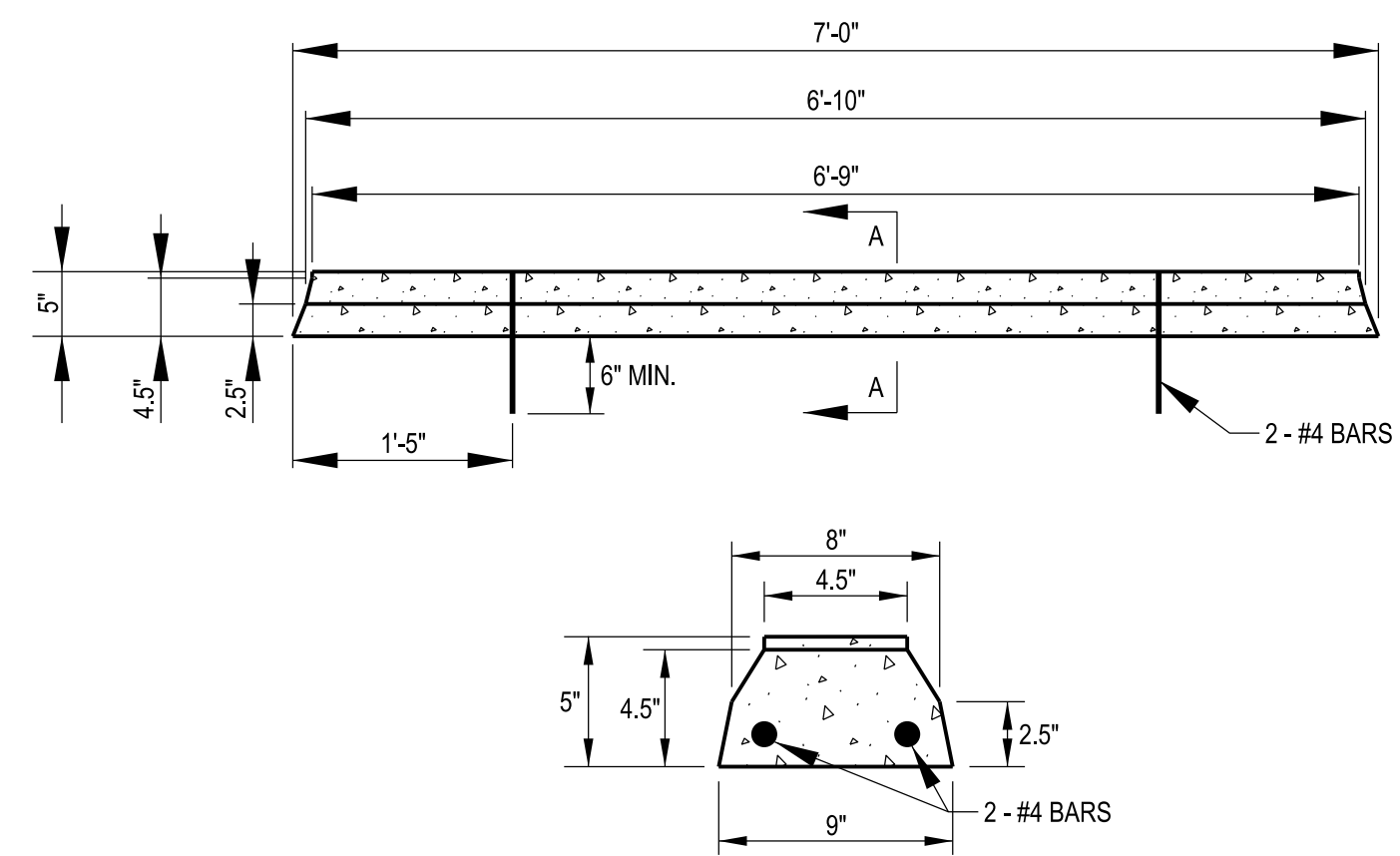
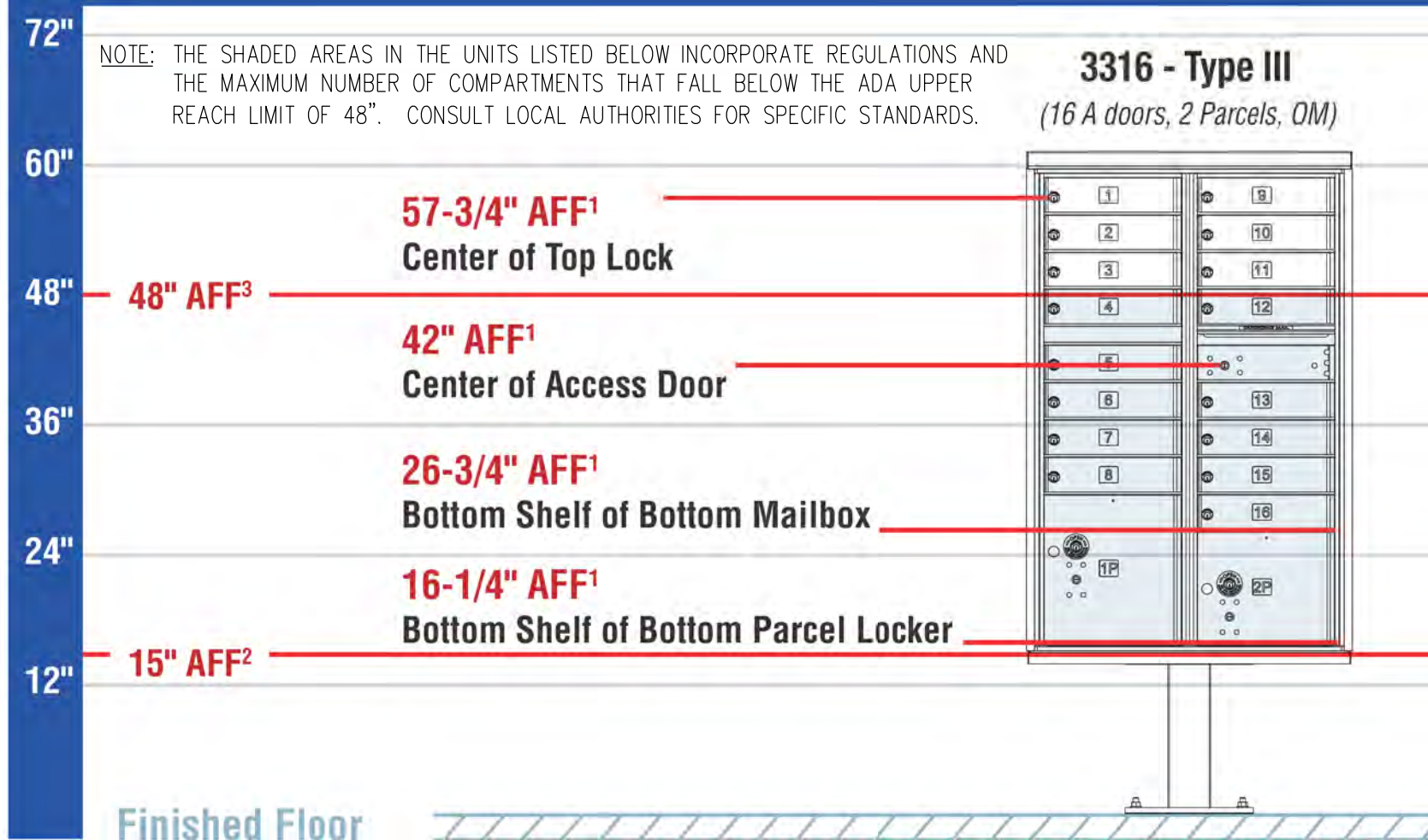
CLUSTER BOX UNIT (CBU)
-CONCRETE PAD REQUIREMENTS-

- ALL FREE STANDING PADS MUST BE 8" THICK -

1 UNIT	SINGLE PAD	4' X 4'
2 UNITS	DOUBLE PAD	4' X 7'
3 UNITS	TRIPLE PAD	4' X 10'
4 UNITS	QUAD PAD	4' X 13'

*** WHEN PLACING A PARCEL LOCKER AT ANY CBU LOCATION, INCREASE THE PAD SIZE BY AN ADDITIONAL 4' X 4'***

CLUSTER BOX UNITS



CONCRETE WHEEL STOP DETAIL N.T.S.

Flock Safety
Tech Specs

License plate reading cameras that capture more evidence for your city.



Double Solar Panels

- Voltage: 18-20V
- Weight: 25.73 lbs (with hardware)
- Length: 21.25"
- Width: 28"
- Depth: 2" (before pole mount)
- Mount: Atop pole with bolts

Camera

- Length: 8.75"
- Height: 5"
- Width: 2.875"
- Mounting: Adjustable band clamps
- Weight: 3lbs
- Footage: Uploads via LTE
- Line of Sight: 15' wide, 65' distance
- Assembly: Flock Safety in Atlanta, GA

Pole

- DOT breakaway pole - 12 foot
- Diameter: 2.5" (inner) 3" (outer)
- Material: SCH 40
- Alloy: 6061
- Weight: 32 lbs

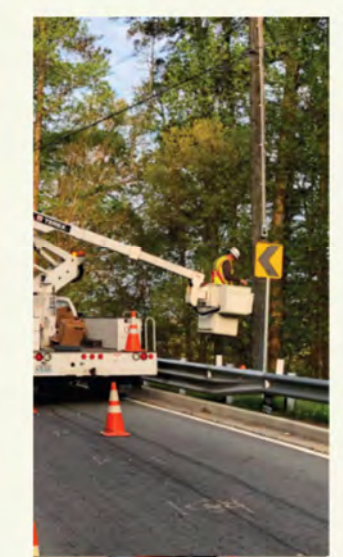
Install Anywhere



Solar & Existing Pole



Solar & Flock Pole



Electric & Existing Pole

Lombardo
H · O · M · E · S
4 Research Park Drive, Suite 130
St. Charles, MO 63034
Phone: (636) 265-2710

VOLZ
INCORPORATED
10849 Indian Head Indl. Blvd.
St. Louis, Missouri 63132
314.860.1250 Fax
www.volzinc.com
Aulinity #203

RYAN L. HOLMES
Professional Engineer
PE-2017018988

THE VILLAS AT ARAGON
VETERANS MEMORIAL PARKWAY
OF FALLON, MO 63366

CONSTRUCTION DETAILS:
SHEET 7
Design By: RLH
Drawn By: RLH
Checked By: RLH
Parcel ID: 2-056C-5026-00-0001.10
Permit No. GR22-00001
Volz Project # 22649
10-12-22
C22.6