

**Specifications:**

**MAIN FRAME:** Welded assembly fabricated from 13 & 14 gauge galvanized steel tubing and hot rolled flat steel. Frame is coated with custom formula of TGIC polyester powder coating in conformance with the specifications outlined herein, after fabrication.

**END CAPS:** 4.5" OD and larger shall be cast aluminum, powder coated to match frame. Smaller end caps shall be injection molded high density polyethylene. All end caps are factory installed.

**Bolt Caps, Bolt Guards, and Foot Shrouds:** Injection molded high density polyethylene.

**FOOT PADS:** (where applicable) shall be cast aluminum.

**HARDWARE:** All nuts, bolts, screws, and lock washers used in the assembly shall be stainless steel, yellow dichromate plated steel, blue-coat plated steel, mechanically galvanized or powder coated/ yellow dichromate plated steel. All primary fasteners shall be 304 alloy stainless steel. Fasteners with yellow dichromate treatment have an electro-deposited, 99.9% pure zinc substrate applied from a specially formulated solution sealed with a yellow dichromate top coat designed to work in conjunction with the zinc plating.

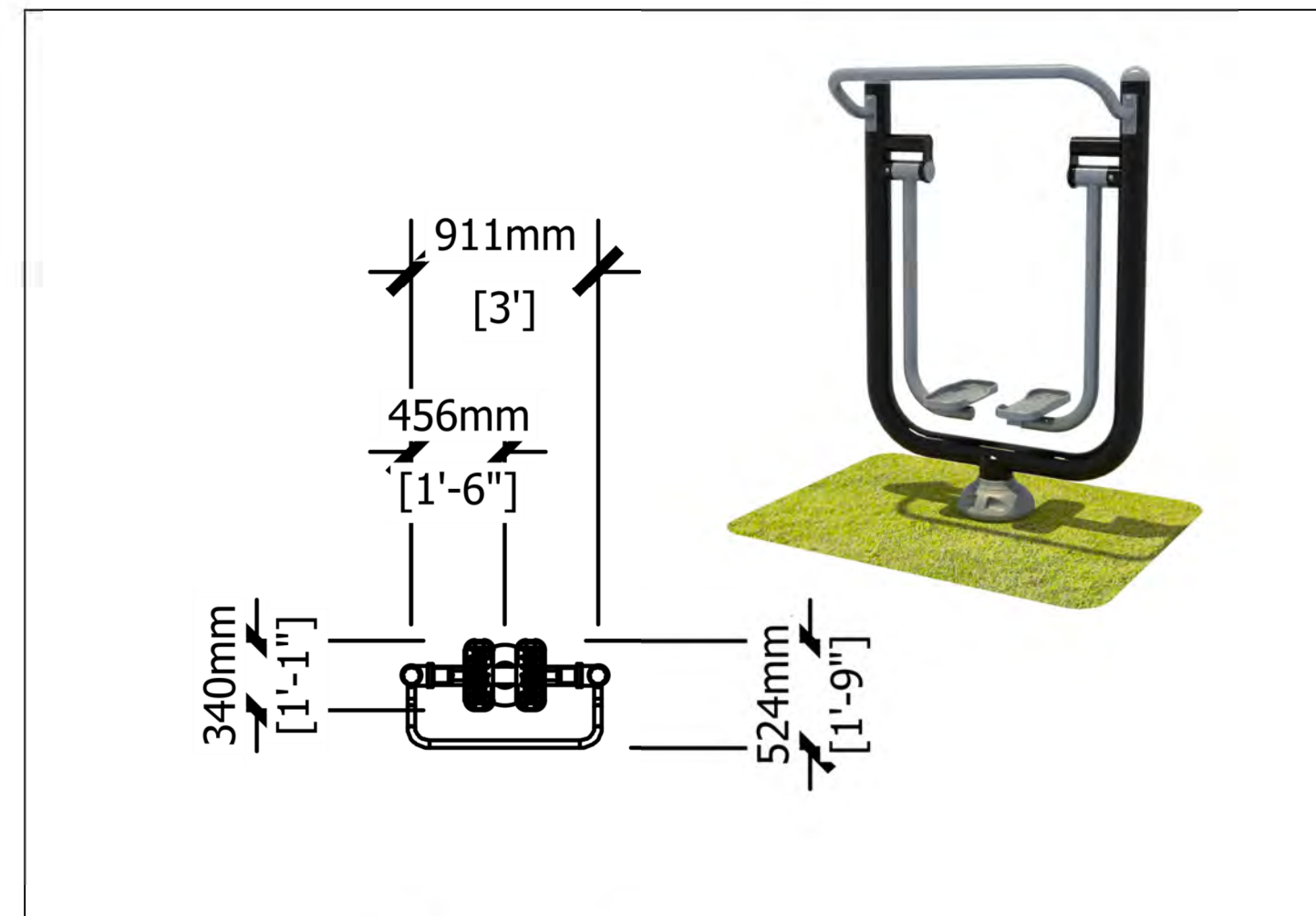
**Bolt Caps / Bolt Guards and foot shrouds are injection molded plastic. Foot Pads are cast aluminum 383 alloy with powder coat finish.**

**POWDER COATING:** Powder-coat shall be an electrostatically applied custom formula of TGIC polyester powder. All components will be free of sharp edges and excess weld spatter and shall be cleaned in a multi stage bath system including a rust inhibitor, and a sealer to prevent flash rusting before coating. The coating shall have a super tough finish with maximum exterior durability and will have superior adhesion characteristics. Typical characteristics are: 3.0 - 5.0 mil thickness and oven cured between 375 to 425 degrees Fahrenheit. Pencil Hardness H (ASTM D-3363), Impact (ASTM D-2794-69), Wedge Bend (ASTM D-522-68), Adhesion (Cross Hatch ASTM D-3359 & Knife Scratch ASTM D-2197), Environmental (Stain Resistance ASTM D-1308, Humidity ASTM D 2247 - 87, Salt Spray ASTM B-117 & Fademeter 300 hrs with no loss of gloss), Oven-bake Stability 100% at 400 degrees Fahrenheit."



PRODUCT SPEC SHEET PRODUCT NO. PTF006  
Single Fit Rider

Single Fit Rider PTF006



**Specifications:**

**MAIN FRAME:** Welded assembly fabricated from 13 & 14 gauge galvanized steel tubing and hot rolled flat steel. Frame is coated with custom formula of TGIC polyester powder coating in conformance with the specifications outlined herein, after fabrication.

**END CAPS:** 4.5" OD and larger shall be cast aluminum, powder coated to match frame. Smaller end caps shall be injection molded high density polyethylene. All end caps are factory installed.

**Bolt Caps, Bolt Guards, and Foot Shrouds:** Injection molded high density polyethylene.

**FOOT PADS:** (where applicable) shall be cast aluminum.

**HARDWARE:** All nuts, bolts, screws, and lock washers used in the assembly shall be stainless steel, yellow dichromate plated steel, blue-coat plated steel, mechanically galvanized or powder coated/ yellow dichromate plated steel. All primary fasteners shall be 304 alloy stainless steel. Fasteners with yellow dichromate treatment have an electro-deposited, 99.9% pure zinc substrate applied from a specially formulated solution sealed with a yellow dichromate top coat designed to work in conjunction with the zinc plating.

**Bolt Caps / Bolt Guards and foot shrouds are injection molded plastic. Foot Pads are cast aluminum 383 alloy with powder coat finish.**

**POWDER COATING:** Powder-coat shall be an electrostatically applied custom formula of TGIC polyester powder. All components will be free of sharp edges and excess weld spatter and shall be cleaned in a multi stage bath system including a rust inhibitor, and a sealer to prevent flash rusting before coating. The coating shall have a super tough finish with maximum exterior durability and will have superior adhesion characteristics. Typical characteristics are: 3.0 - 5.0 mil thickness and oven cured between 375 to 425 degrees Fahrenheit. Pencil Hardness H (ASTM D-3363), Impact (ASTM D-2794-69), Wedge Bend (ASTM D-522-68), Adhesion (Cross Hatch ASTM D-3359 & Knife Scratch ASTM D-2197), Environmental (Stain Resistance ASTM D-1308, Humidity ASTM D 2247 - 87, Salt Spray ASTM B-117 & Fademeter 300 hrs with no loss of gloss), Oven-bake Stability 100% at 400 degrees Fahrenheit."



PRODUCT SPEC SHEET PRODUCT NO. PTF013  
Single Sky Walker

Single Sky Walker PTF013



**Single Station Exercise Bike**



**Product Description**  
Want to bike but don't have a trail? The Single Station Exercise Bike is a good way to ride a bike without a pathway. Because it is in a fixed position, you save space on the room needed to get a good workout. There is no need for a track and you will not need to worry about traffic from cars, other bike riders, runners, or walkers. You will ride distraction-free and without fear of hitting rocks, wet roads, or falling. Stationary bikes are low-impact physical activity that is easy on joints, ankles, hips, and backs. This makes it exceptionally good for those with joint pain or those recovering from injury. It's also a good aerobic activity that will improve cardio. This is a superb way to strengthen your heart, lungs, and leg muscles. Work on your calves, quads, and hamstrings as you pedal forward. Add this safe aerobic activity to your recreational area today!

**Product Specifications**  
Model Number: PTF061  
Age Range: 13 years +  
Muscle Group: Legs  
Product Type: Fitness Single  
Unit Size: 1' 10" x 3' 5"

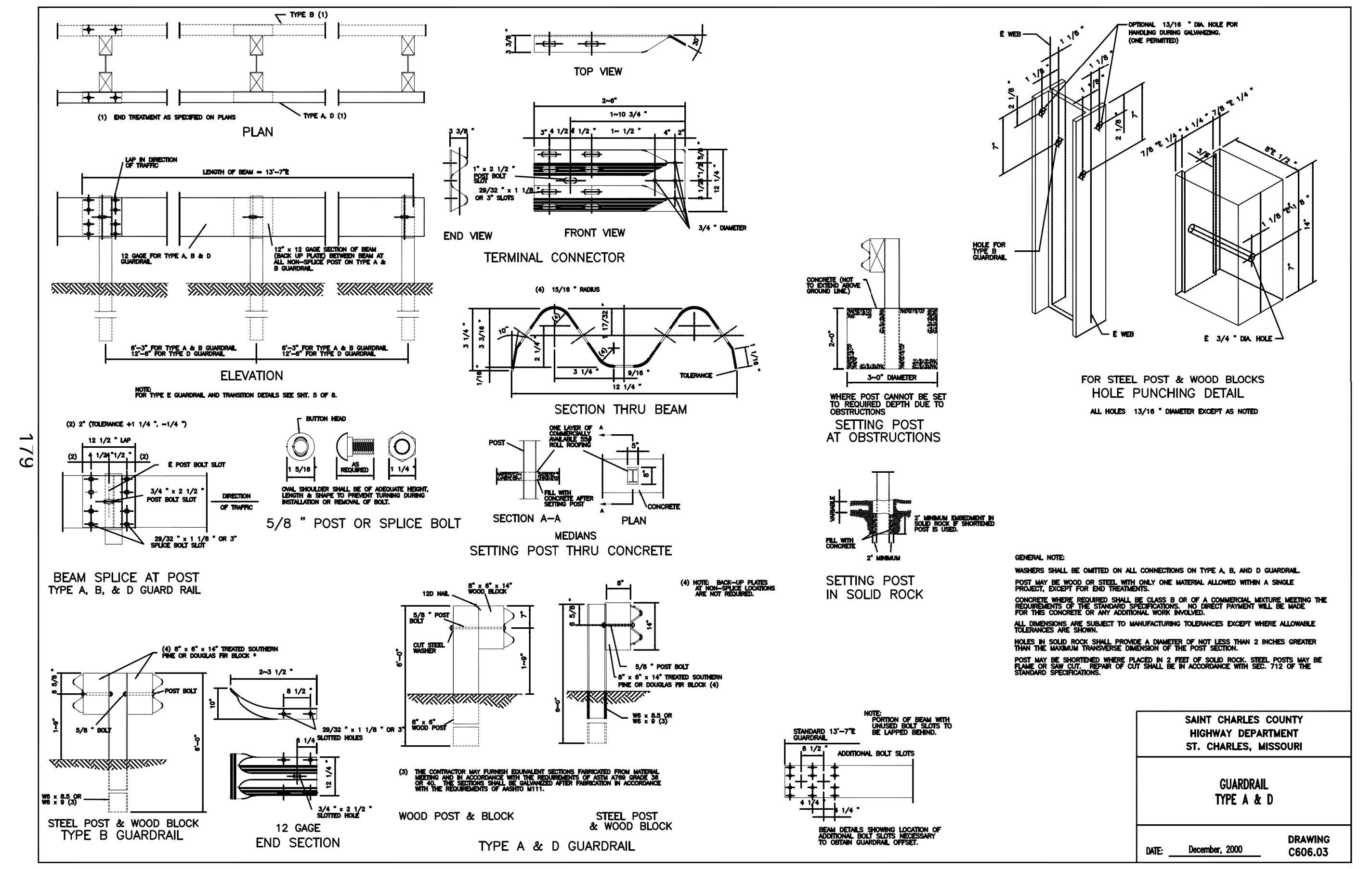
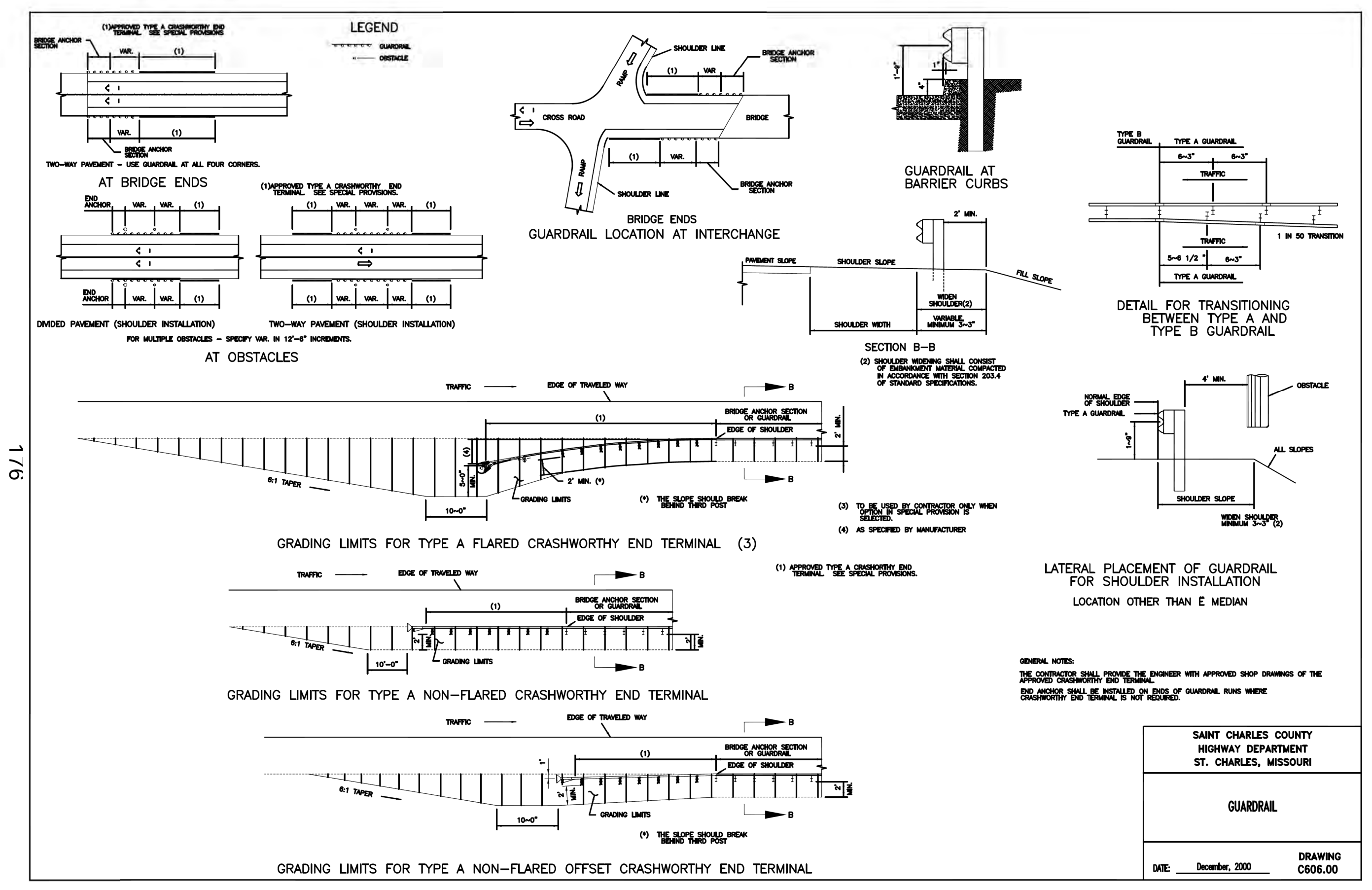
**Lombardo**  
H · O · M · E · S  
4 Research Park Drive, Suite 130  
St. Charles, MO 63304  
Phone: (636) 265-2710

**VOLZ**  
INCORPORATED  
10849 Indian Head Indl. Blvd.  
St. Louis, Missouri 63132  
314.860.1250 Fax  
www.volzinc.com  
Aulinity #203

**RYAN L. HOLMES**  
Professional Engineer  
PE-2017018988

**THE VILLAS AT ARAGON**  
VETERANS MEMORIAL PARKWAY  
OF FALLON, MO 63366

**ACTIVE ADULT STATION DETAILS N.T.S.**



**CONSTRUCTION DETAILS: SHEET 8**

Design By: RLH  
Drawn By: RLH  
Checked By: RLH

Permit No. GR22-00001  
Date: December, 2000  
Drawing: C606.03

10-12-22  
C22.7