

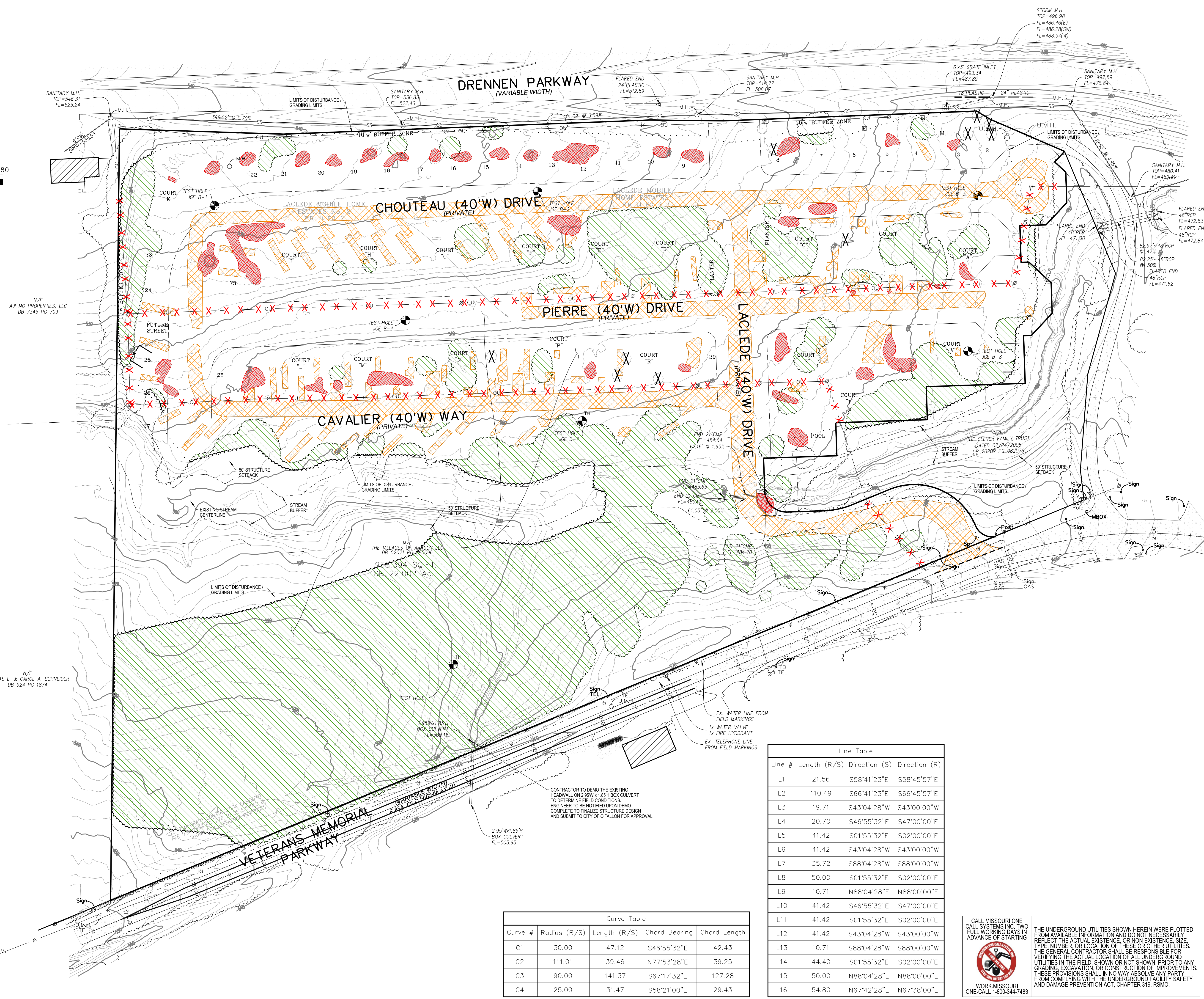
TREE PRESERVATION CALCULATIONS
 CITY OF FALLON, MO; SECTION 402.040.B
 DURING DEVELOPMENT, ONCE A SITE PLAN OR PRELIMINARY PLAT APPROVAL HAS BEEN REQUESTED, A MINIMUM OF TWENTY PERCENT (20%) OF THE EXISTING TREES OR FIFTEEN TREES PER ACRE SHALL BE RETAINED.
 ARAGON REQUIREMENT: RETAIN TWENTY PERCENT (20%) OF THE EXISTING TREES.
 CALCULATIONS (TREES 6" CALIPER AND GREATER):
 EXISTING TREES = 10.27 AC.
 TREES TO BE REMOVED = 7.39 AC.
 TREES TO BE RETAINED = 2.88 AC.
 % RETAINED = 28.10% > 20%
GENERAL NOTES:
 1. CLEARING LIMITS SHALL BE VISIBLY MARKED IN THE FIELD PRIOR TO REMOVAL OF TREES.

DEMOLITION LEGEND

- SAWCUT PAVEMENT
- XXX UTILITY TO BE REMOVED
- X TREE TO BE REMOVED
- (TBR) TO BE REMOVED
- (LIP) USE IN PLACE
- (TBR&R) TO BE REMOVED & REPLACED
- Area of Existing Trees to be Removed
- Area of Existing Pavement to be Removed
- Area of Cultural Debris to be Removed
- Edge of New Tree Line

CLEARING NOTE:
 NO LAND DISTURBANCE PERMITTED (INCLUDING REMOVAL OF TREE STUMPS, CONCRETE PADS, ETC.) PRIOR TO RECEIPT OF ISSUED MISSOURI DEPARTMENT OF NATURAL RESOURCES (MOSNR) LAND DISTURBANCE PERMIT.

SEPARATE CLEARING PERMIT RECEIVED FROM THE CITY OF FALLON
 PERMIT NO. GR22-000001
 FILE NO. 22-000312
 DATE APPROVED: FEBRUARY 11, 2022
 EXPIRATION DATE: FEBRUARY 11, 2023



Curve Table

Curve #	Radius (R/S)	Length (R/S)	Chord Bearing	Chord Length
C1	30.00	47.12	S46°55'32"E	42.43
C2	111.01	39.46	N77°53'28"E	39.25
C3	90.00	141.37	S67°17'32"E	127.28
C4	25.00	31.47	S58°21'00"E	29.43

Line Table

Line #	Length (R/S)	Direction (S)	Direction (R)
L1	21.56	S58°41'23"E	S58°45'57"E
L2	110.49	S66°41'23"E	S66°45'57"E
L3	19.71	S43°04'28"W	S43°00'00"W
L4	20.70	S46°55'32"E	S47°00'00"E
L5	41.42	S01°55'32"E	S02°00'00"E
L6	41.42	S43°04'28"W	S43°00'00"W
L7	35.72	S88°04'28"W	S88°00'00"W
L8	50.00	S01°55'32"E	S02°00'00"E
L9	10.71	N88°04'28"E	N88°00'00"E
L10	41.42	S46°55'32"E	S47°00'00"E
L11	41.42	S01°55'32"E	S02°00'00"E
L12	41.42	S43°04'28"W	S43°00'00"W
L13	10.71	S88°04'28"W	S88°00'00"W
L14	44.40	S01°55'32"E	S02°00'00"E
L15	50.00	N88°04'28"E	N88°00'00"E
L16	54.80	N67°42'28"E	N67°38'00"E

CALL MISSOURI ONE CALL SYSTEMS INC. TWO FULL WORKING DAYS IN ADVANCE OF STARTING

THE UNDERGROUND UTILITIES SHOWN HEREIN WERE PLOTTED FROM AVAILABLE INFORMATION AND DO NOT NECESSARILY REFLECT THE ACTUAL EXISTENCE, OR NON EXISTENCE, SIZE, TYPE, NUMBER, OR LOCATION OF THESE OR OTHER UTILITIES. THE GENERAL CONTRACTOR SHALL BE RESPONSIBLE FOR VERIFYING THE ACTUAL LOCATION OF ALL UNDERGROUND UTILITIES IN THE FIELD, SHOWN OR NOT SHOWN, PRIOR TO ANY GRADING, EXCAVATION, OR CONSTRUCTION OF IMPROVEMENTS. THESE PROVISIONS SHALL IN NO WAY ABSOLVE ANY PARTY FROM COMPLYING WITH THE UNDERGROUND FACILITY SAFETY AND DAMAGE PREVENTION ACT, CHAPTER 319, RSMO.

WORK MISSOURI ONE-CALL 1-800-344-7483

Lombardo
 H · O · M · E · S
 4 Research Park Drive, Suite 130
 St. Charles, MO 63304
 Phone: (636) 265-2710

VOLZ
 Incorporated
 ENGINEERING, ARCHITECTURE, LAND SURVEYING, TRANSPORTATION, CONSTRUCTION MANAGEMENT
 10849 Indian Head Indl. Blvd.
 St. Louis, Missouri 63132
 314.890.1250 Fax
 www.volzinc.com
 Aulinity #203

MISSOURI PROFESSIONAL SEAL
 RYAN L. HOLMES
 NUMBER
 PE-2017018988
 EXPIRES 01-22
 RYAN L. HOLMES
 Professional Engineer
 PE-2017018988

THE VILLAS AT ARAGON
 VETERANS MEMORIAL PARKWAY
 OF FALLON, MO 63366

DEMOLITION PLAN

Permit ID: 2106C-S026-00-0001.10
 Permit No. GR22-000001
 Volz Project # 22649

Design By: R/LH
 Drawn By: R/LH
 Checked By: R/LH

03/31/22
G04