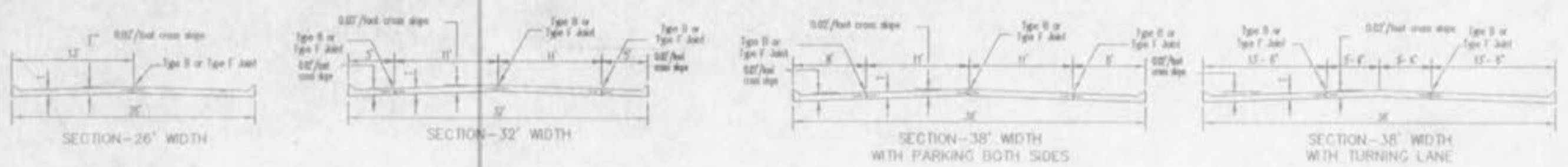


INTEGRAL ROLLED CURB AND CONCRETE PAVEMENT TYPICAL SECTIONS AND DETAILS



GENERAL NOTES

- Do not scale drawing. Follow dimensions.
- All street inlets shall be separated from the pavement and curb by expansion joint material extending completely through curb and slab. Manhole casing within the pavement limits shall be bound on street.
- When a joint falls within SR, or contacts side, manholes, or other structures, shorten one or more joints either side of opening to permit joint to fall on road structure and/or between corners of rectangular structures.
- Driveway configurations are shown in the Entrance Construction Details.
- Construction joints and tie bars may be omitted when curb is ground monolithic with pavement.
- Minimum Thickness for Pavement is:
  - Residential 26' wide Streets 6"
  - Residential 32'-35' wide Streets 7"
- For joint and bar requirements refer to the Pavement Construction Details for "Joints and Curb". Std. Dwg. CS02.03. Note that the width and location may change the type of joint required.
- Transverse or longitudinal construction joints in alleys formed pavements may be made with a groove or lock, if such device has been approved in advance by the Department.
- The locations of the Type II longitudinal construction joints in the sections may be interchanged for the different widths of construction if approved by the Department.

PLAN OF JOINT LOCATION

Where variable widths of intersecting elements are shown joint spacing must conform to locations indicated on Standard Typical Sections, Intersection Construction Details or the Approved Construction Plans.

| STREET                                   | JOINT TYPE   | JOINT AND BAR REQUIREMENTS  |
|--|--------------|---|
| 3 LANE RESIDENTIAL 32'-35' wide pavement | Transverse   | TYPE C no steel bars  |
| 7' thick concrete                        | Longitudinal | TYPE B<br>1/2" x 6' staggered tie bars 12' x 30' cts.                                     |
|  | Expansion    | TYPE A no steel bars  |
| RESIDENTIAL 2 LANE                       | Transverse   | TYPE C no steel bars  |
| 2" thick concrete                        | Longitudinal | Full Width Construction TYPE I installed with 1/2" x 6' staggered tie bars 12' x 30' cts. |
|  | Expansion    | TYPE A no steel bars  |

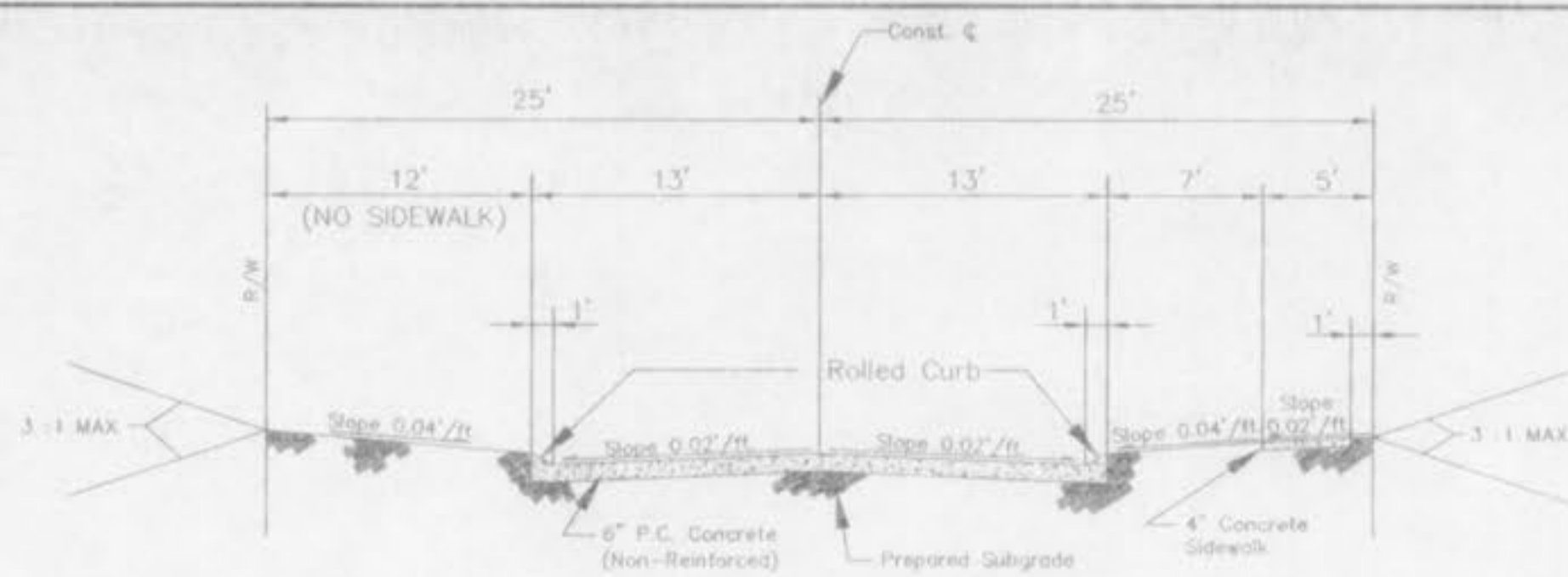
NOTE: Joint Bar material shall meet ASTM designations as follows:  
 Expansion type: ...  
 Manhole tie bars: ...  
 Non-reinforcing tie bars: ...



MANHOLE BOXING

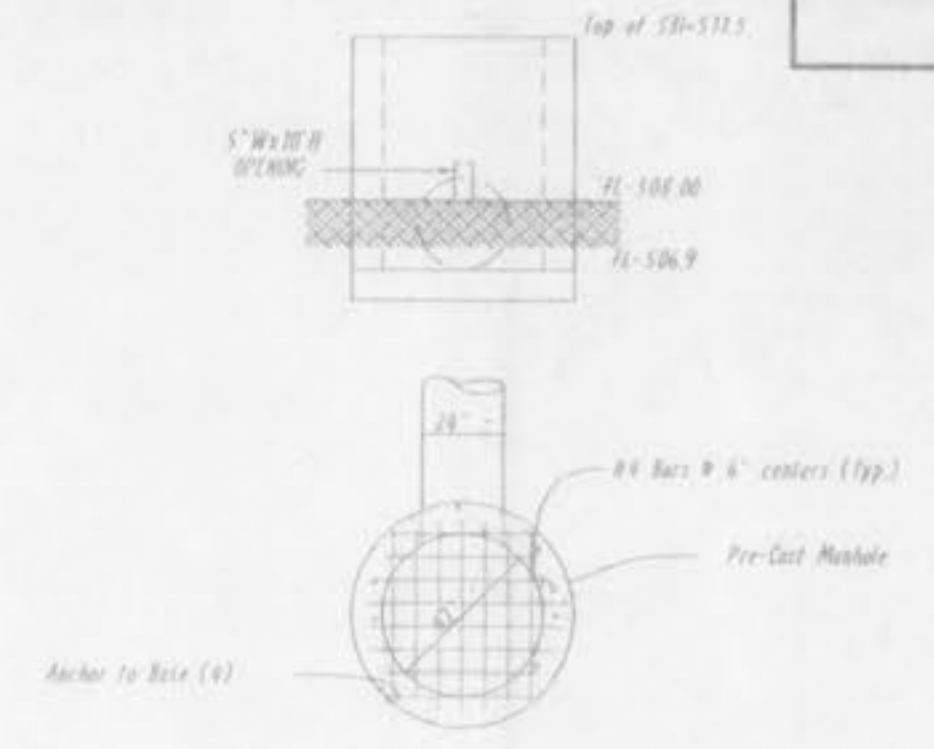
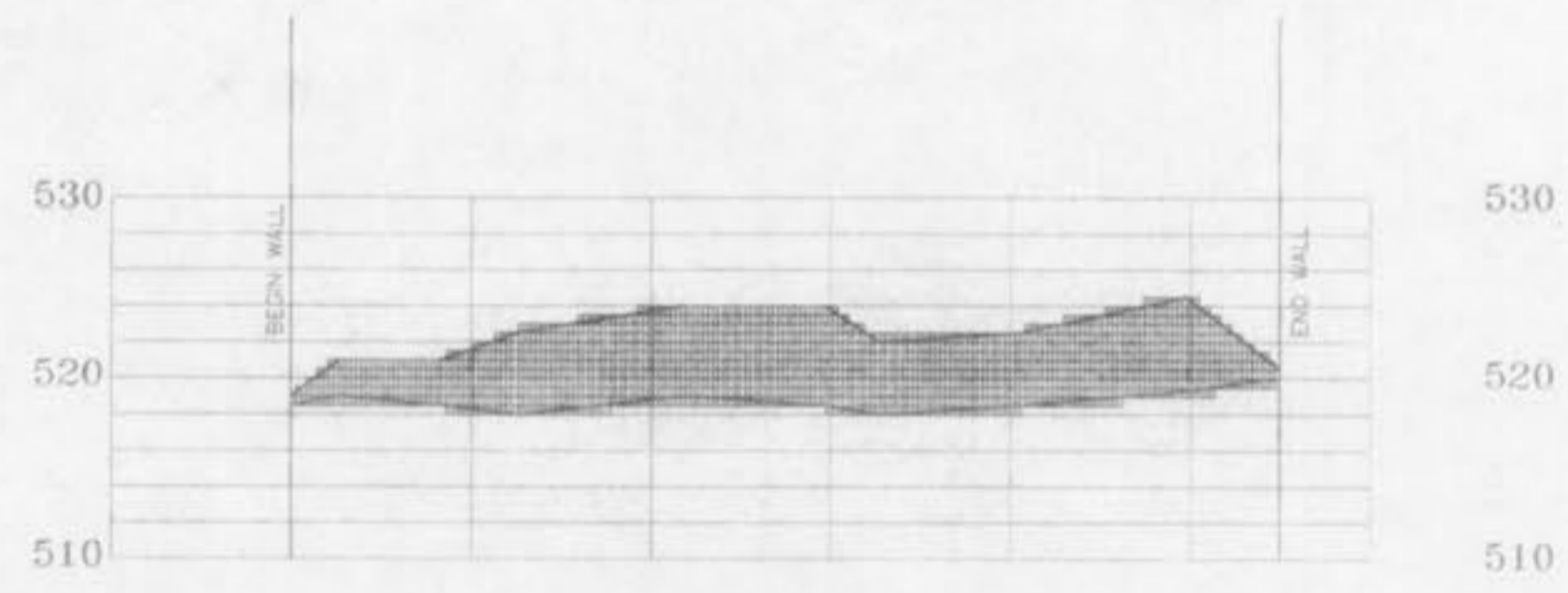
SAINT CHARLES COUNTY HIGHWAY DEPARTMENT ST. CHARLES, MISSOURI  
 PAVEMENT CONSTRUCTION DETAILS  
 INTEGRAL ROLLED CURB AND CONCRETE PAVEMENT TYPICAL SECTIONS AND DETAILS  
 DATE: September, 2002 DRAWING: CS02.02

CONSTRUCTION DETAIL



TYPICAL SECTION

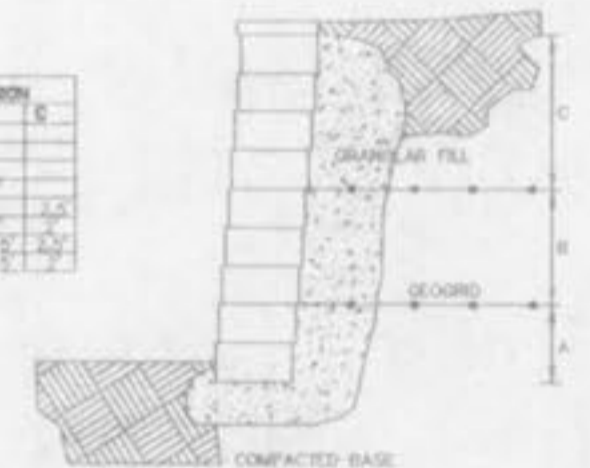
(50' RIGHT-OF-WAY)



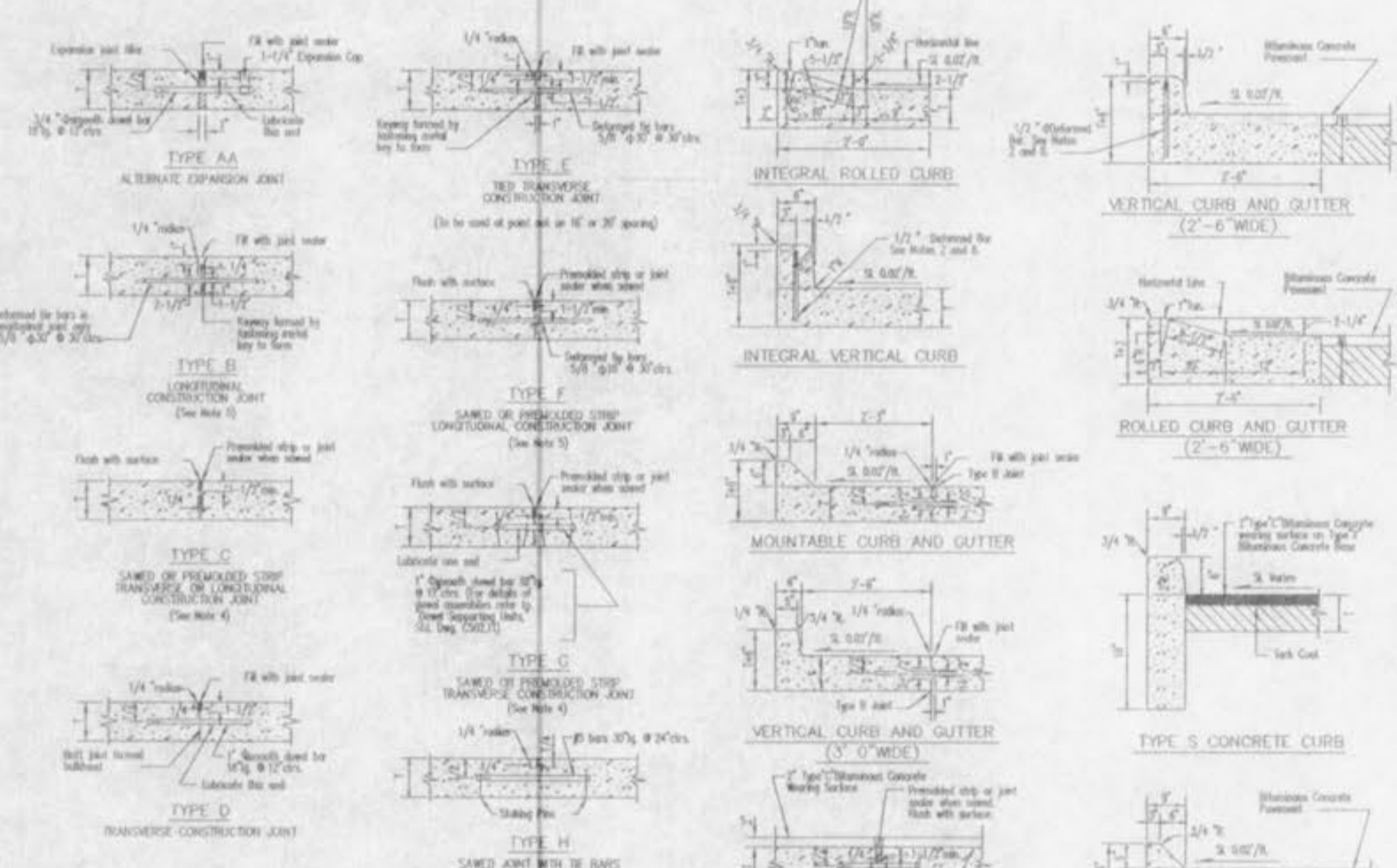
OS 114 Detail

| WALL TYPE | DEPTH | NO. OF LAYERS | LENGTH | DIMENSION |
|-----------|-------|---------------|--------|-----------|
| 1         | 12"   | 1             | 12'    | 12"       |
| 2         | 12"   | 2             | 12'    | 12"       |
| 3         | 12"   | 3             | 12'    | 12"       |
| 4         | 12"   | 4             | 12'    | 12"       |

THE DESIGN AND DIMENSIONS SHOWN IS BASED ON ASSUMED CONDITIONS. FINAL DESIGN MUST BE PROVIDED BY THE CONTRACTOR PRIOR TO INSTALLATION.



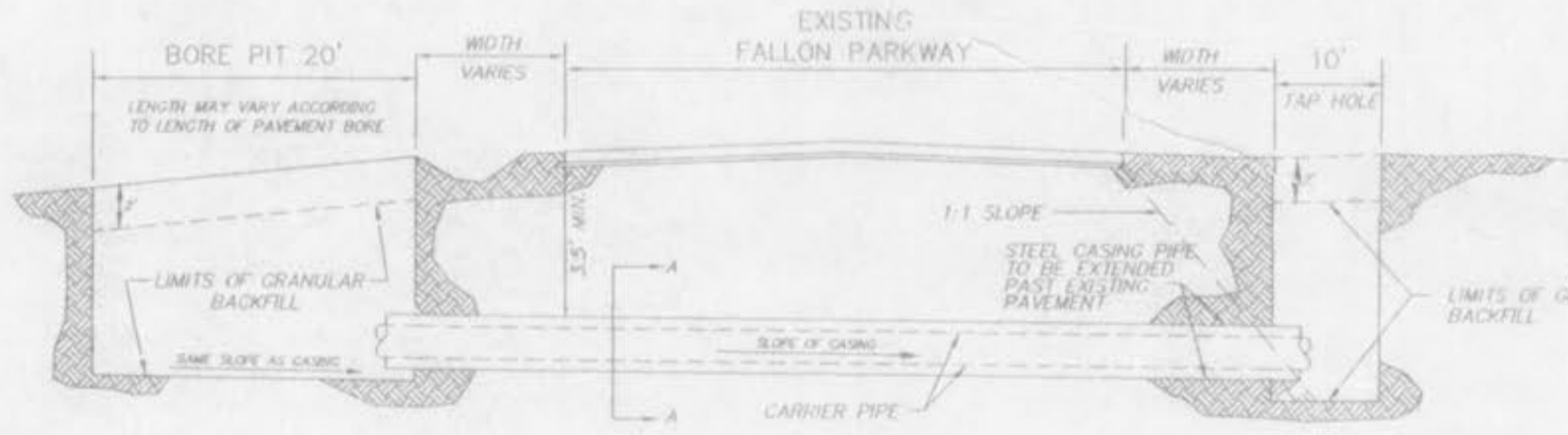
MODULAR BLOCK WALL SYSTEM TYPICAL SECTION



GENERAL NOTES

- Do not scale drawing. Follow dimensions.
- Construction joint and tie bars shall be installed when curb is poured integral with pavement.
- Minimum Thickness for Pavement is:
  - Residential 26' wide Streets 6"
  - Residential 32'-35' wide Streets 7"
- For joint and bar requirements refer to the Pavement Construction Details for "Joints and Curb". Std. Dwg. CS02.03. Note that the width and location may change the type of joint required.
- Transverse or longitudinal construction joints in alleys formed pavements may be made with a groove or lock, if such device has been approved in advance by the Department.
- The locations of the Type II longitudinal construction joints in the sections may be interchanged for the different widths of construction if approved by the Department.
- All drilled holes for pipes and cables shall be 12" dia. unless otherwise noted.
- Length of tie bars shall be 12" unless otherwise noted.
- Expansion or longitudinal construction joints in alleys formed pavements may be made with a groove or lock, if such device has been approved in advance by the Department.
- The tie bars shall be installed for a length of at least 12" before and be coated with an approved grease.
- All drilled holes 12" x 12" shall be square unless noted.

SAINT CHARLES COUNTY HIGHWAY DEPARTMENT ST. CHARLES, MISSOURI  
 PAVEMENT CONSTRUCTION DETAILS  
 JOINTS AND CURBS  
 DATE: September, 2002 DRAWING: CS02.03



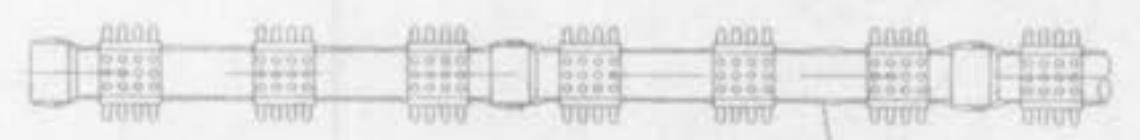
BORE DETAIL

BORING NOTES

- DO NOT SCALE DRAWING. FOLLOW DIMENSIONS.
- INSTALLATION OF THE CASING AND CARRIER PIPES SHALL MEET THE REQUIREMENTS FOR THE CITY OF FALLON SPECIFICATIONS.
- ALL JOINTS IN THE CASING PIPE SHALL BE WELDED.
- THE PIPE TO BE PLACED IN THE BORE HOLE SHALL BE CAST-IRON PIPE EXCEPT AS REQUIRED ON THE PLANS.
- STEEL CASING PIPE USED IN THE INSTALLATION OF WATER OR SEWER LINE AND CONDUITS SHALL HAVE A MINIMUM YIELD STRENGTH OF 35,000 P.S.I.
- CARRIER PIPE SHALL BE 15" DIA. RCP.
- CASING PIPE SHALL BE 24" DIA. STEEL (0.281" WALL THICKNESS).

SECTION A-A

ENCASEMENT SPACER DETAILS



SPACING DETAILS

POLYETHYLENE ENCASCMENT BETWEEN SPACER AND PIPE

