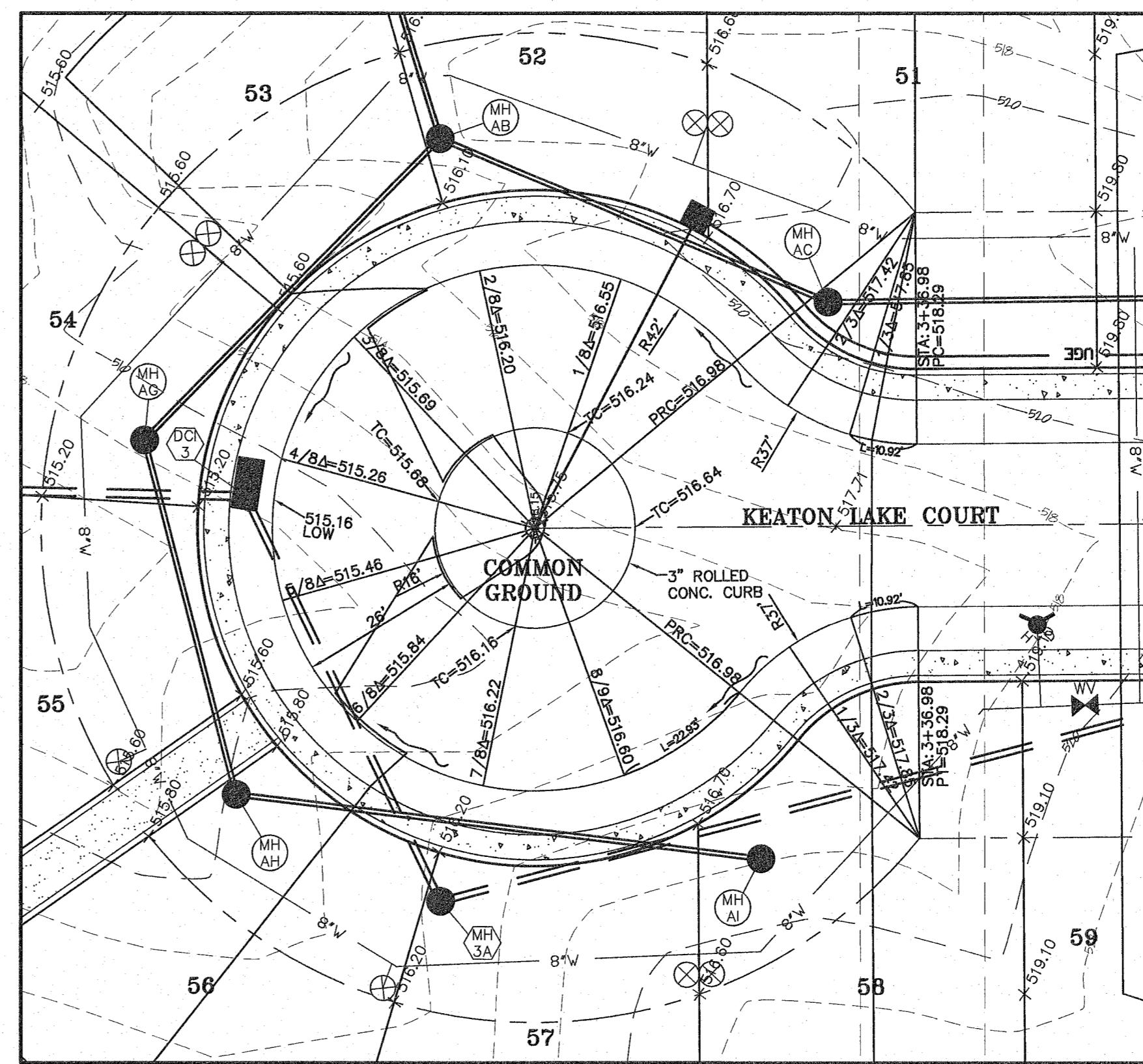


WARPING DETAIL

SCALE: 1" = 20'

NOTE:
ALL ELEVATIONS ARE TO TOP OF CURB UNLESS OTHERWISE NOTED.
TP=TOP OF PAVEMENT

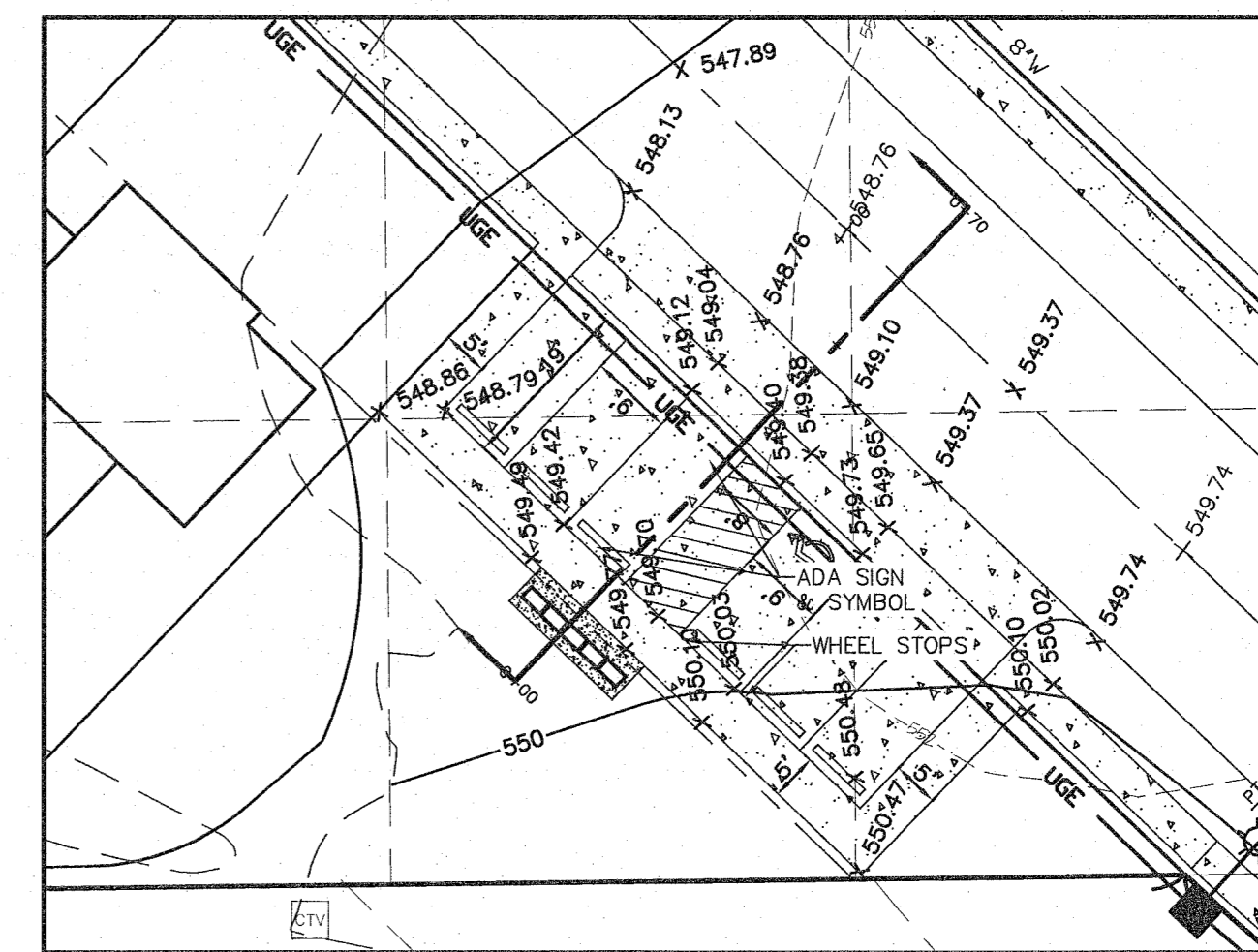


WARPING DETAIL

SCALE: 1" = 20'

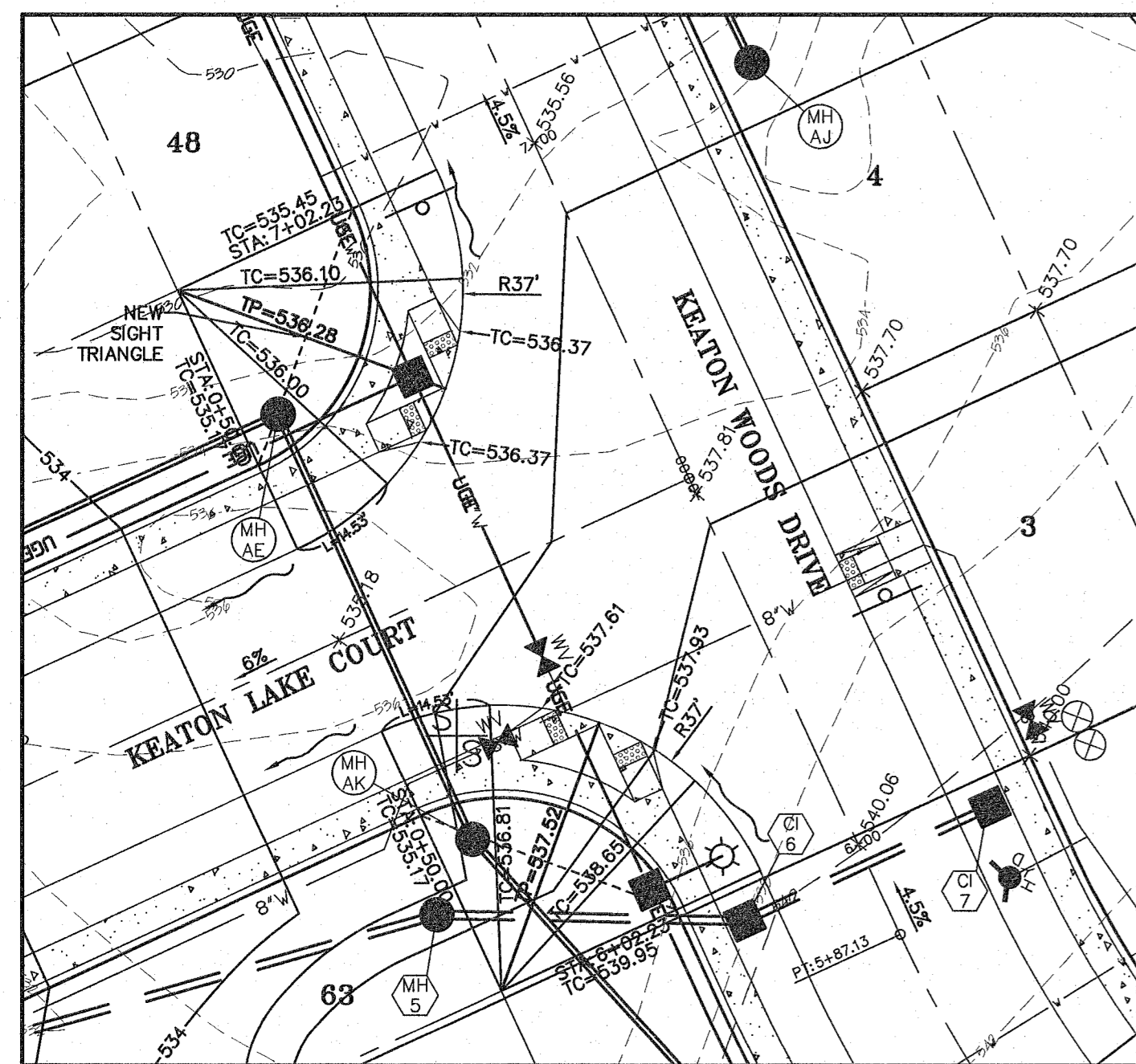
NOTE:
ALL ELEVATIONS ARE TO TOP OF CURB UNLESS OTHERWISE NOTED.
TP=TOP OF PAVEMENT

KIOSK PARKING NOTE:
-ALL ADA SYMBOLS & STRIPING TO BE PAINTED BLUE.
-PAVEMENT TO BE 6" NON-REINFORCED CONCRETE OVER 4" TYPE 5 ROCK BASE.



MAIL KIOSK DETAIL

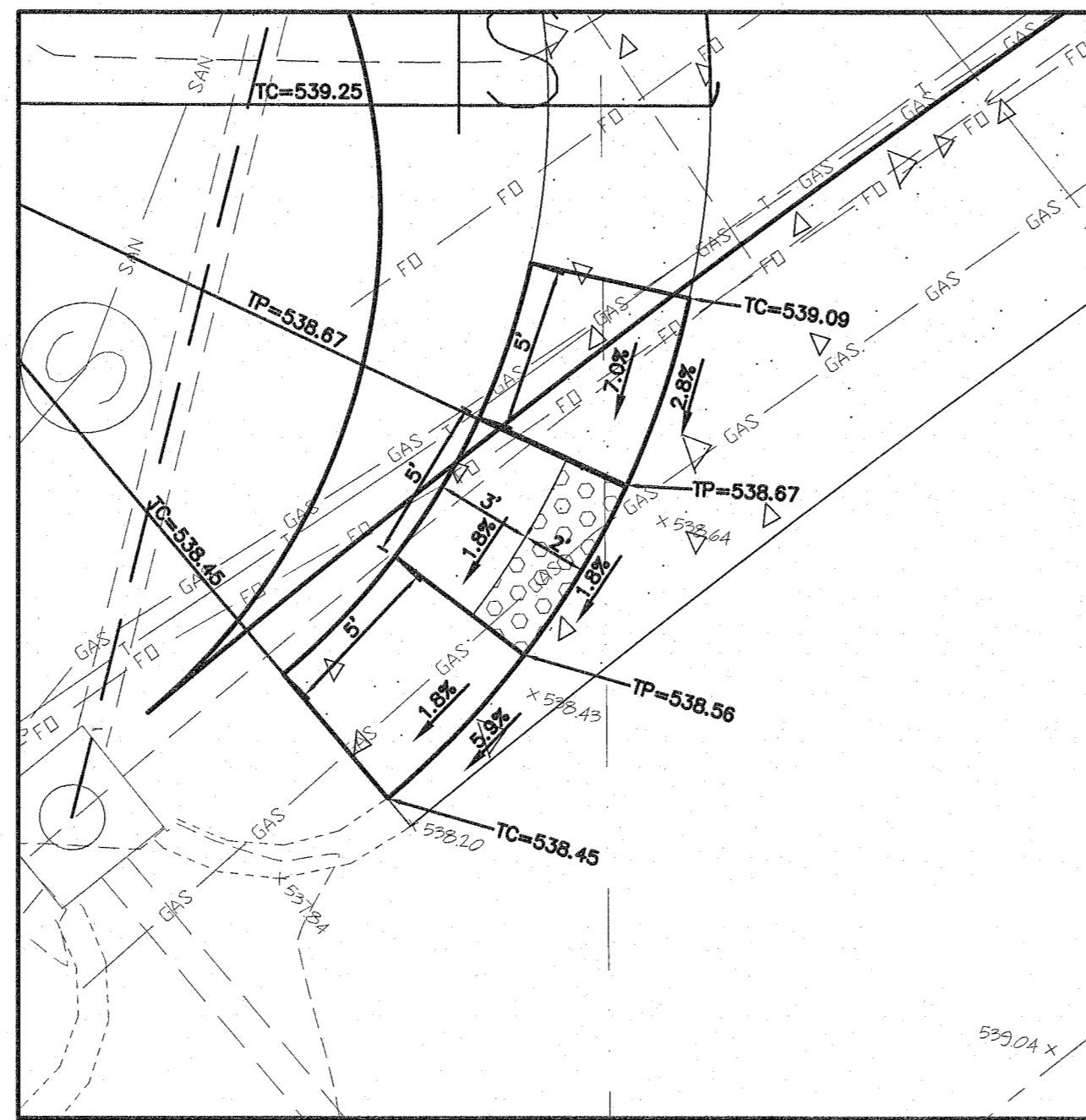
SCALE: 1" = 20'



INTERSECTION DETAIL

SCALE: 1" = 20'

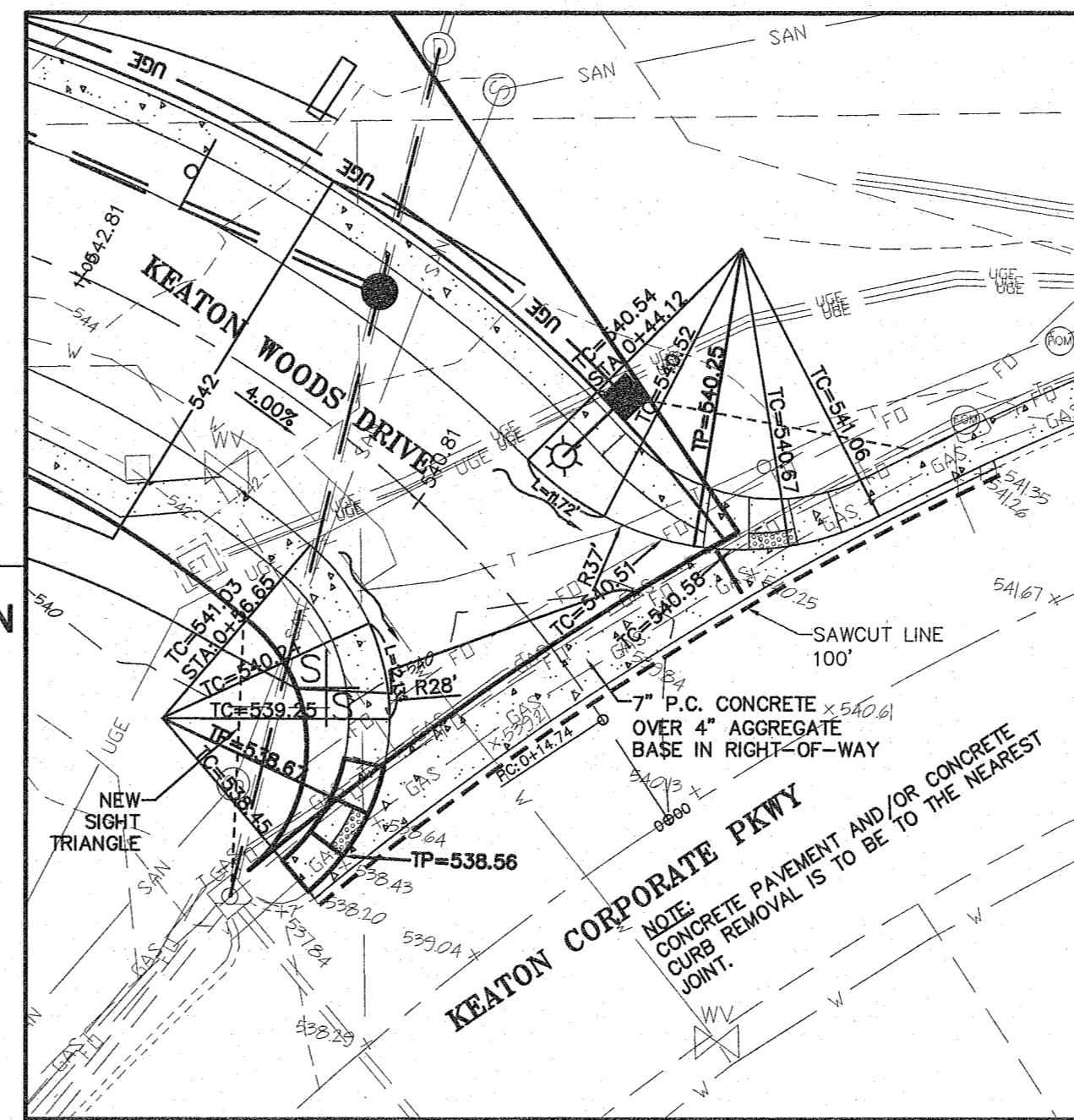
NOTE:
ALL ELEVATIONS ARE TO TOP OF CURB UNLESS OTHERWISE NOTED.
TP=TOP OF PAVEMENT



RAMP DETAIL

SCALE: 1" = 5'

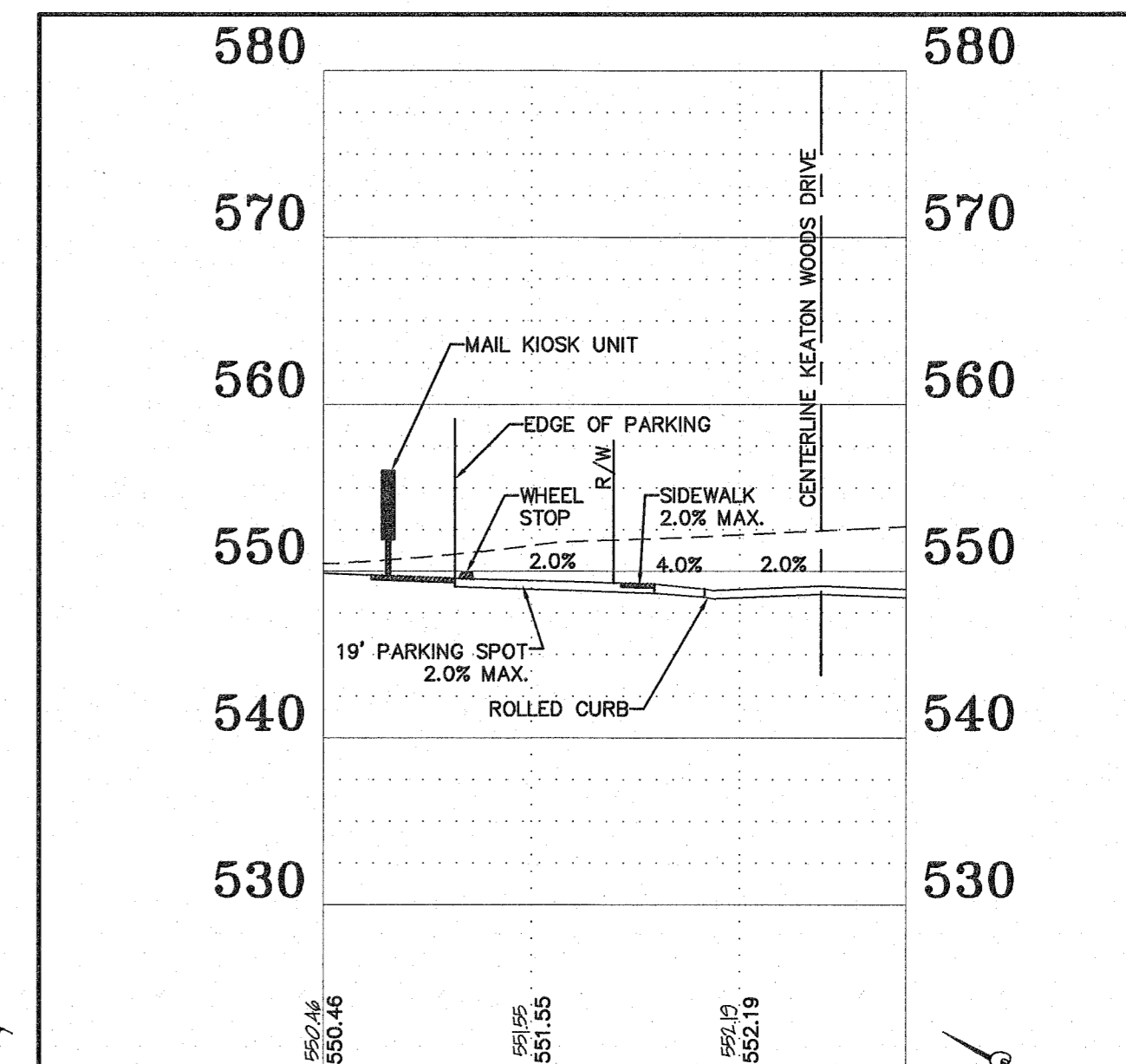
SEE DETAIL FOR RAMP INSTALLATION



INTERSECTION DETAIL

SCALE: 1" = 20'

NOTE:
ALL ELEVATIONS ARE TO TOP OF CURB UNLESS OTHERWISE NOTED.
TP=TOP OF PAVEMENT



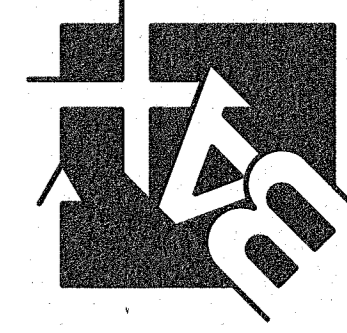
MAIL KIOSK CROSS SECTION

SCALE: 1" = 20'

PROJECT TITLE:

THE VILLAS AT KEATON WOODS

ENGINEERING
PLANNING
SURVEYING
221 Pont. Teat Blvd.
St. Charles, MO 63501
636-928-5552
FAX 636-928-1719



DISCLAIMER OF RESPONSIBILITY
I hereby specify that the documents intended to be authorized by my seal are limited to this sheet, and I hereby disclaim any responsibility for all other drawings, specifications, estimates, reports or other documents or instruments relating to or intended to be used for any part or parts of the architectural or engineering project or projects.



Copyright 2018
Box Engineering Company, Inc.
Engineering Authority No. 000655
Surveying Authority No. 000144
All Rights Reserved

REVISIONS	
12/19/16	P.W.S.D.#2, DUKRETT & CITY COMMENTS
01/05/17	P.W.S.D.#2 COMMENTS
02/20/17	CITY COMMENTS
03/17/17	CITY COMMENTS
08/20/18	CITY COMMENTS
11/06/18	CITY COMMENTS
12/14/18	CITY COMMENTS
12/28/18	CITY COMMENTS

Developer / Owner:
Bridgewater Communities, Inc.
P.O. Box 4607
Chesterfield, Missouri 63005
636-294-6020

P+Z No. 18-003986
June 7, 2018
City No. #18-009384
Permit #RSP18-000006

Page No.

17 of 32

WARPING AND INTERSECTION DETAILS

Box Project # 15-16469 Issue Date: 05/25/2016