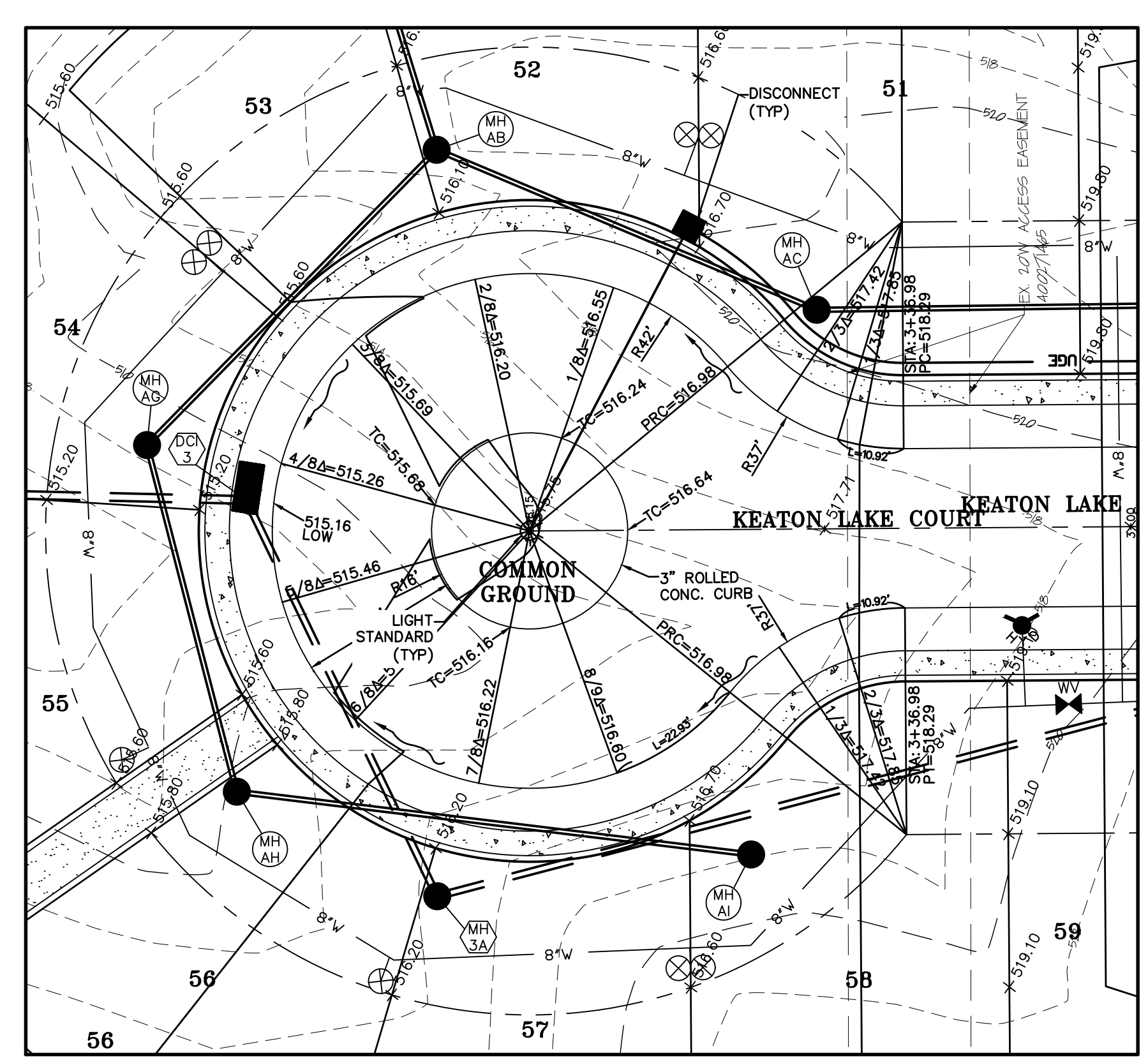


WARPING DETAIL
SCALE: 1" = 20'

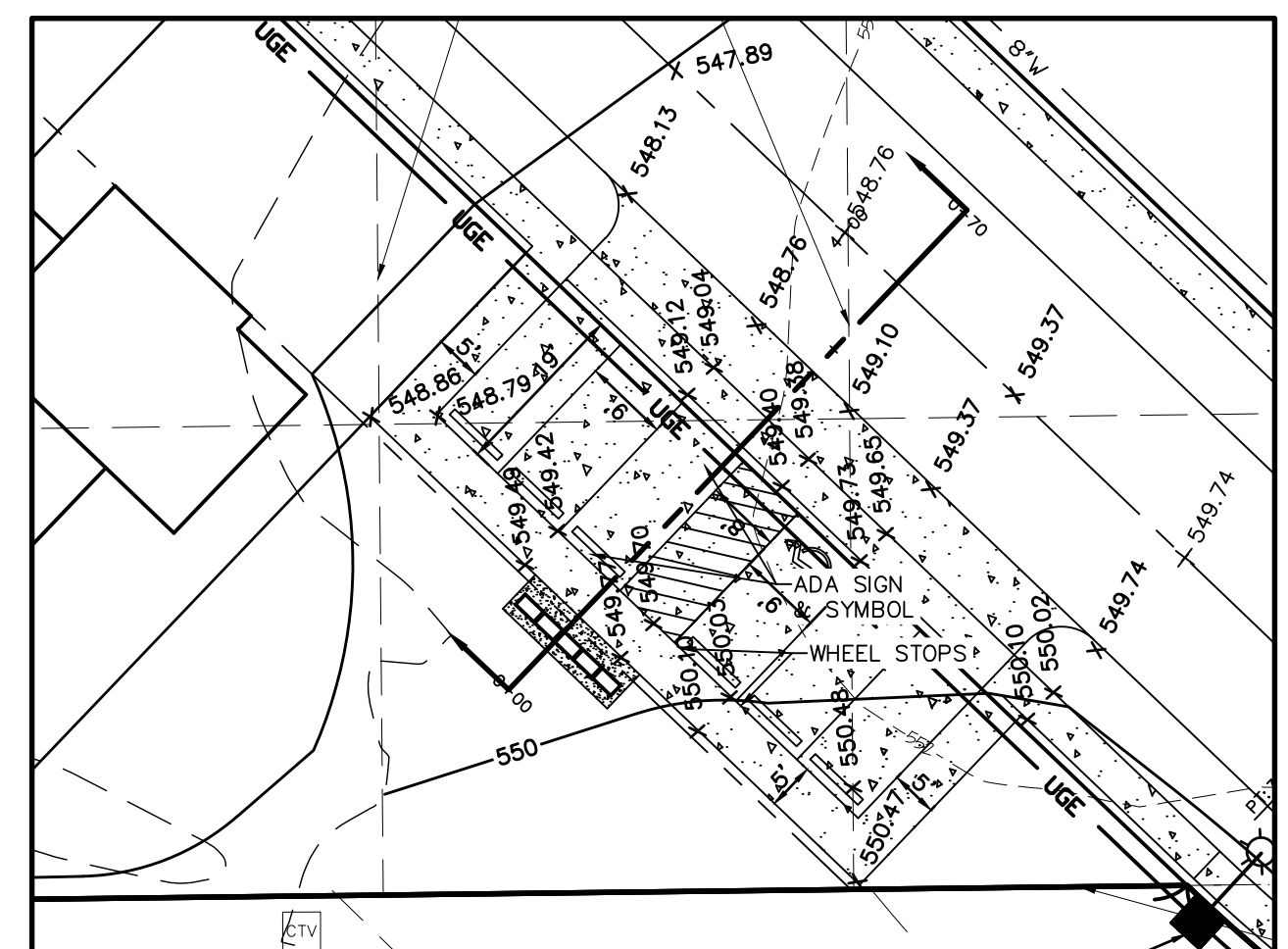
NOTE:
ALL ELEVATIONS ARE TO TOP OF CURB UNLESS OTHERWISE NOTED.
TP=TOP OF PAVEMENT



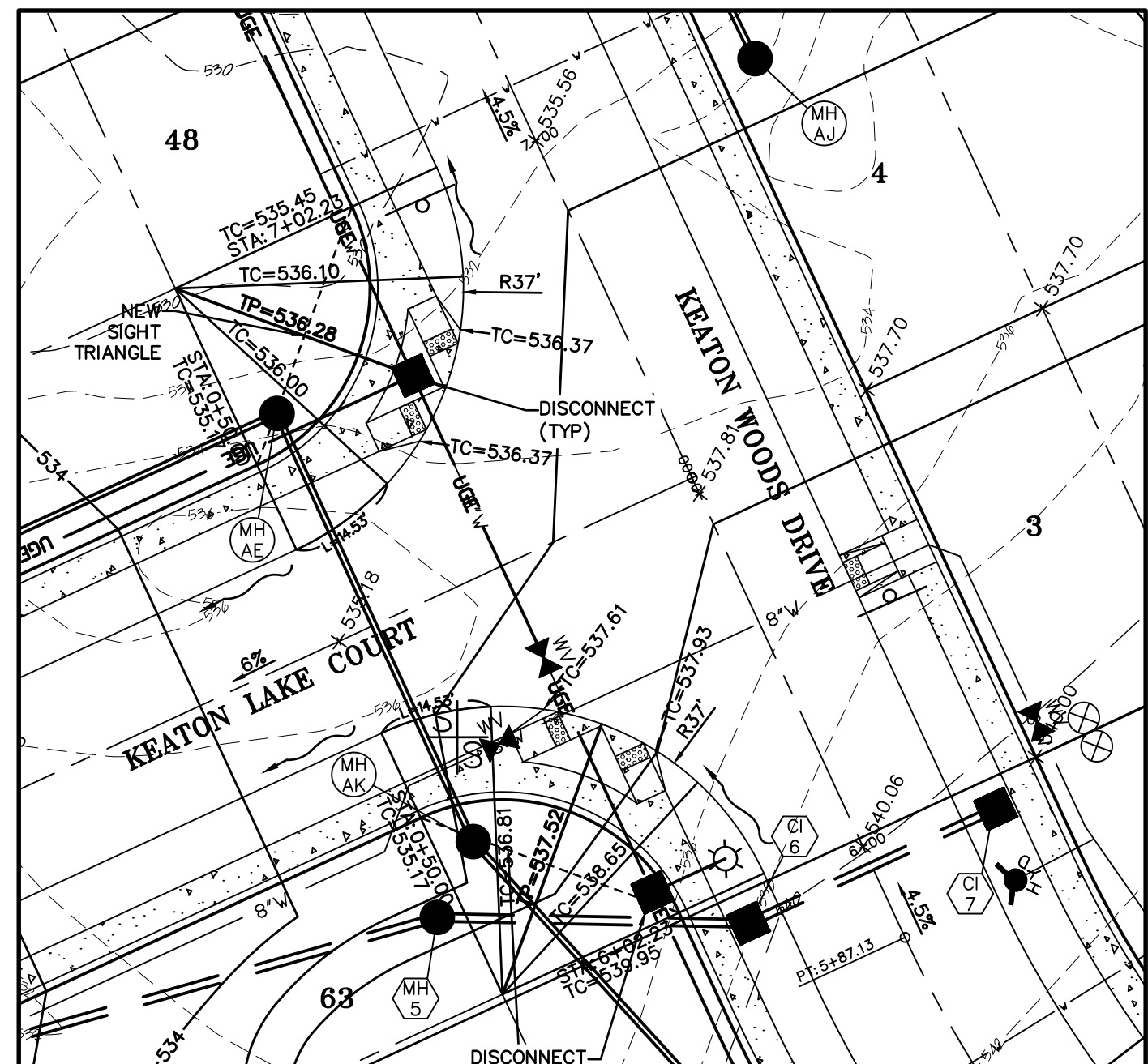
WARPING DETAIL
SCALE: 1" = 20'

NOTE:
ALL ELEVATIONS ARE TO TOP OF CURB UNLESS OTHERWISE NOTED.
TP=TOP OF PAVEMENT

KIOSK PARKING NOTE:
-ALL ADA SYMBOLS & STRIPING TO BE PAINTED BLUE.
-PAVEMENT TO BE 6" NON-REINFORCED CONCRETE OVER 4" TYPE 5 ROCK BASE.

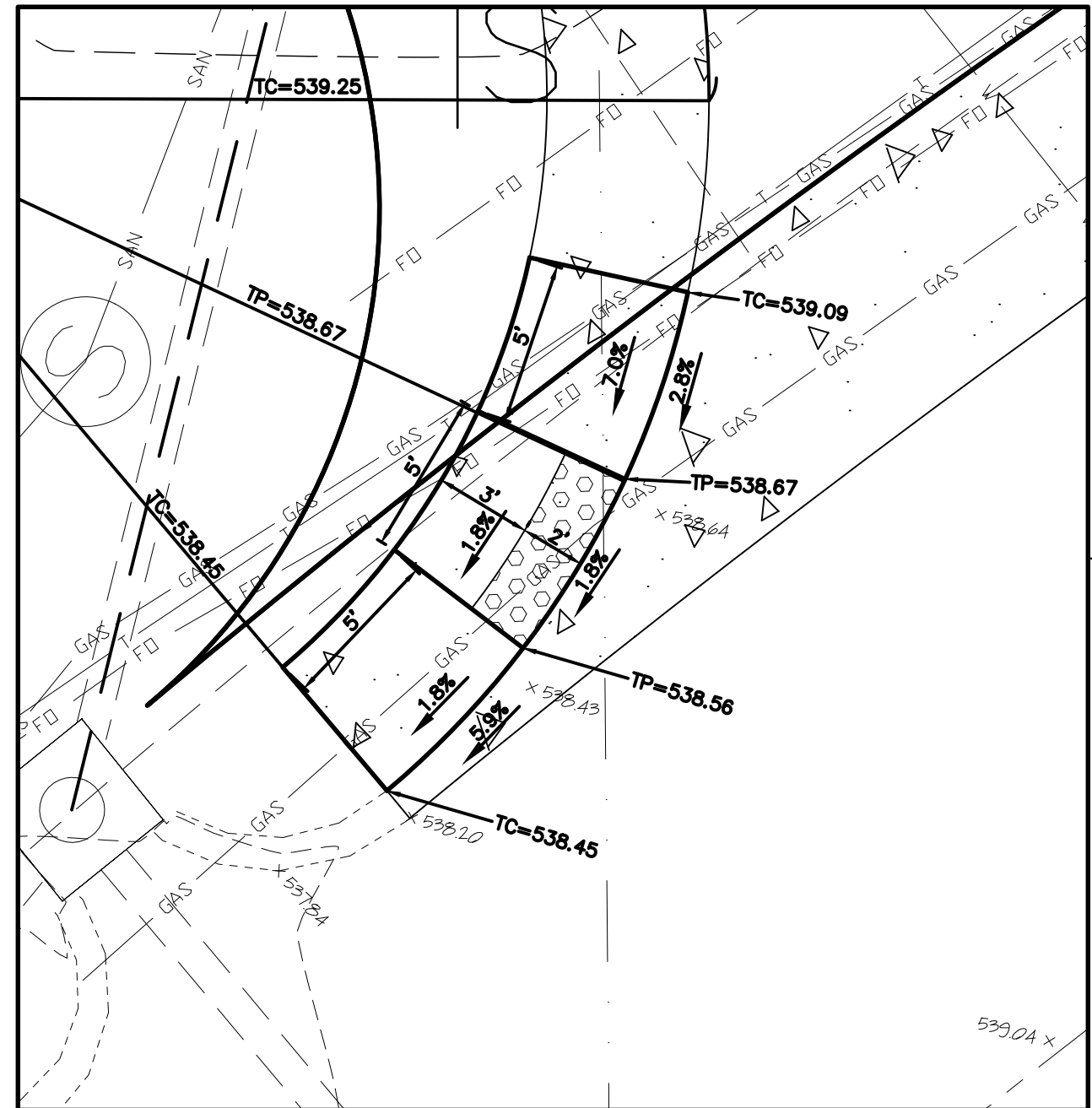


MAIL KIOSK DETAIL
SCALE: 1" = 20'

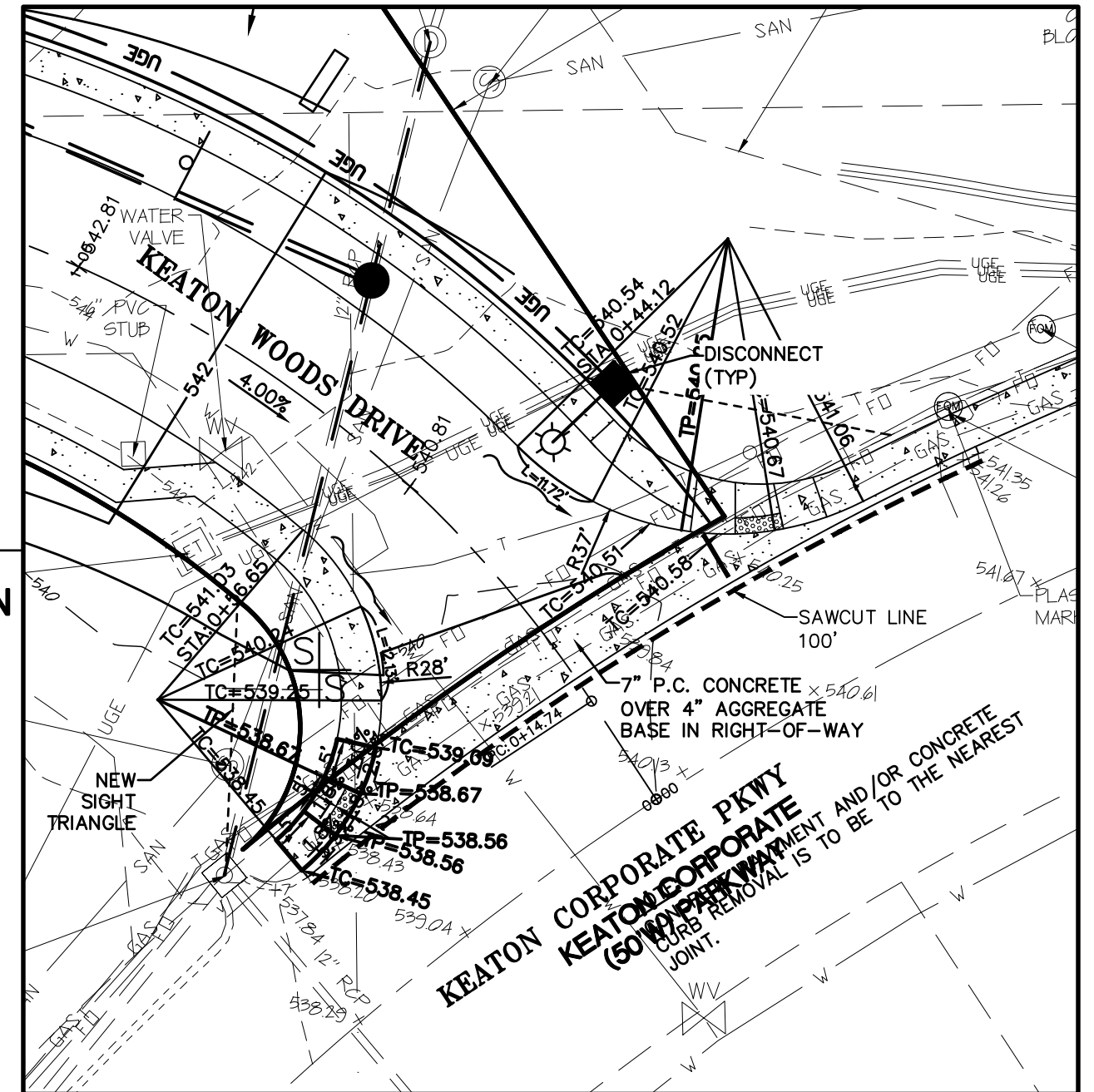


INTERSECTION DETAIL
SCALE: 1" = 20'

NOTE:
ALL ELEVATIONS ARE TO TOP OF CURB UNLESS OTHERWISE NOTED.
TP=TOP OF PAVEMENT

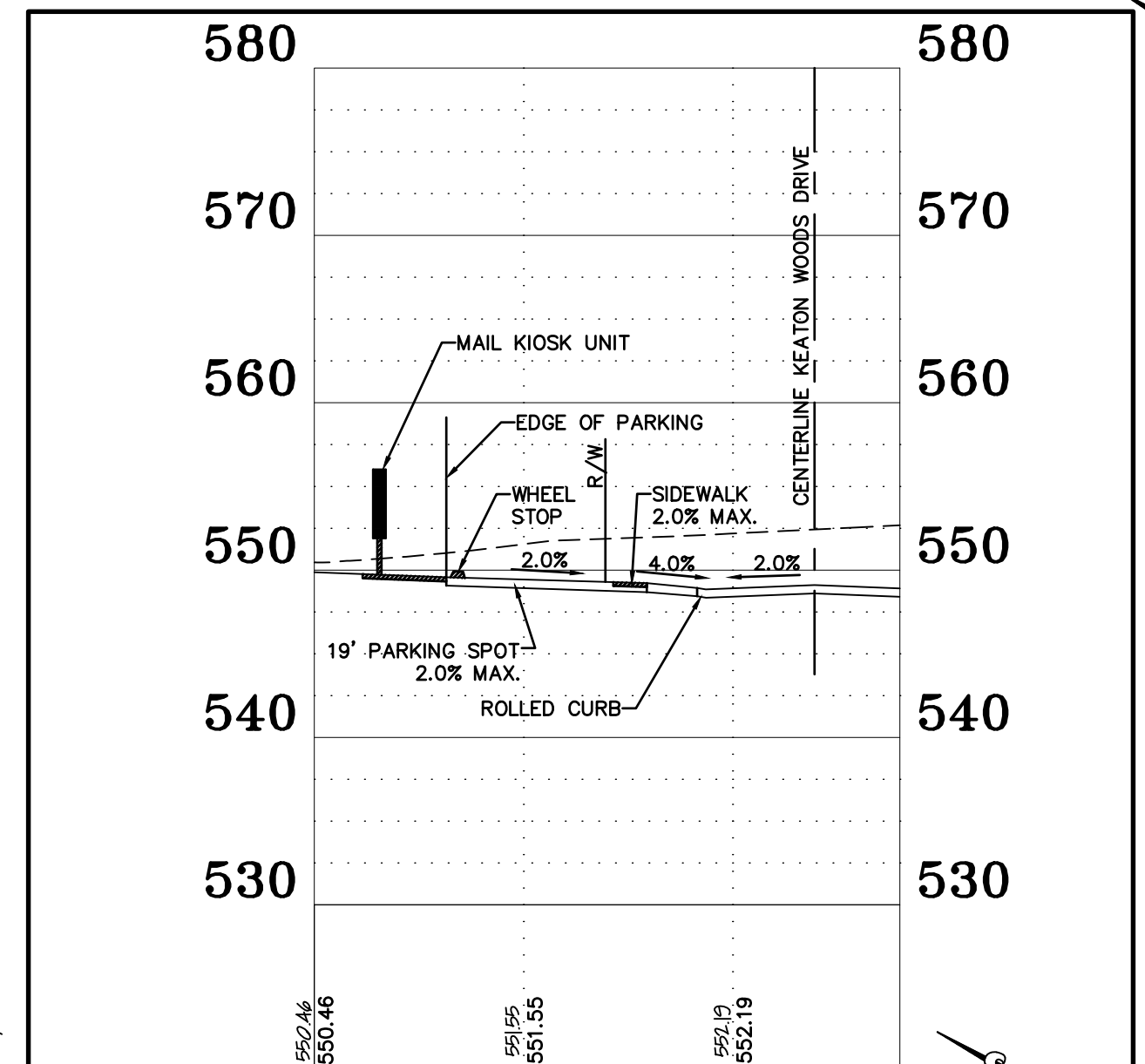


RAMP DETAIL
SCALE: 1" = 5'



INTERSECTION DETAIL
SCALE: 1" = 20'

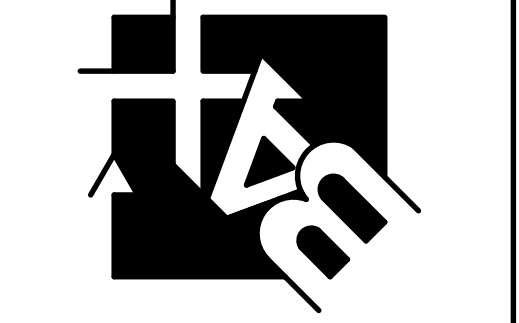
NOTE:
ALL ELEVATIONS ARE TO TOP OF CURB UNLESS OTHERWISE NOTED.
TP=TOP OF PAVEMENT



MAIL KIOSK CROSS SECTION
SCALE: 1" = 20'

PROJECT TITLE:
THE VILLAS AT KEATON WOODS

ENGINEERING
PLANNING
SURVEYING
22 Point View Blvd.
St. Charles, MO 63001
636-928-5562
FAX 928-1718



DISCLAIMER OF RESPONSIBILITY
I hereby specify that the documents intended to be authorized by my seal are limited to this sheet, and I hereby disclaim any responsibility for all other drawings, Specifications, Estimates, Reports or other documents or instruments relating to or intended to be used for any part or parts of the architectural or engineering project or plan.



Copyright 2018
Box Engineering Company, Inc.
Engineering Authority No. 000655
Surveying Authority No. 000144
All Rights Reserved

REVISIONS

02/20/17	CITY COMMENTS
03/17/17	CITY COMMENTS
09/20/18	CITY COMMENTS
11/06/18	CITY COMMENTS
12/14/18	CITY COMMENTS
12/28/18	CITY COMMENTS
06/11/21	CLIENT COMMENTS
03/01/22	CITY COMMENTS

Developer / Owner:
Bridgewater Communities, Inc.
P.O. Box 4607
Chesterfield, Missouri 63005
636-294-6020

WARPING AND INTERSECTION DETAILS

P+Z No. 18-003986
June 7, 2018
City No. #18-009384
Permit #RSP18-000006