

COMMON GROUND  
MONTICELLO  
VILLAGE "B"  
P.B. 30, PG. 68

LOT 219

LOT 218

LOT 216

LOT 215

PROJECT TITLE:

THE VILLAS AT  
KEATON WOODS

Issue Date: 03/25/2016

ENGINEERING  
PLANNING  
SURVEYING

221 Point View Blvd.  
St. Charles, MO 63301  
636-928-5562  
FAX 928-1718



DISCLAIMER OF RESPONSIBILITY  
I hereby specify that the documents intended to be authorized by my seal are limited to this sheet, and I hereby disclaim any responsibility for all other drawings, Specifications, Estimates, Reports or other documents or instruments relating to or intended to be used for any part or parts of the architectural or engineering project or projects.



Clifford L. Heitmann  
Civil Engineer  
E29817

Copyright 2016  
Box Engineering Company, Inc.  
Engineering Authority No. 000655  
Surveying Authority No. 000144  
All Rights Reserved

REVISIONS	DATE	DESCRIPTION
02/20/17	CITY COMMENTS	
03/17/17	CITY COMMENTS	
09/20/18	CITY COMMENTS	
11/06/18	CITY COMMENTS	
12/14/18	CITY COMMENTS	
12/28/18	CITY COMMENTS	
06/11/21	CLIENT COMMENTS	
03/01/22	CITY COMMENTS	

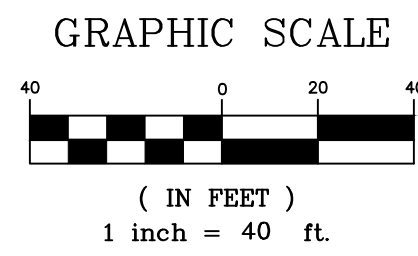
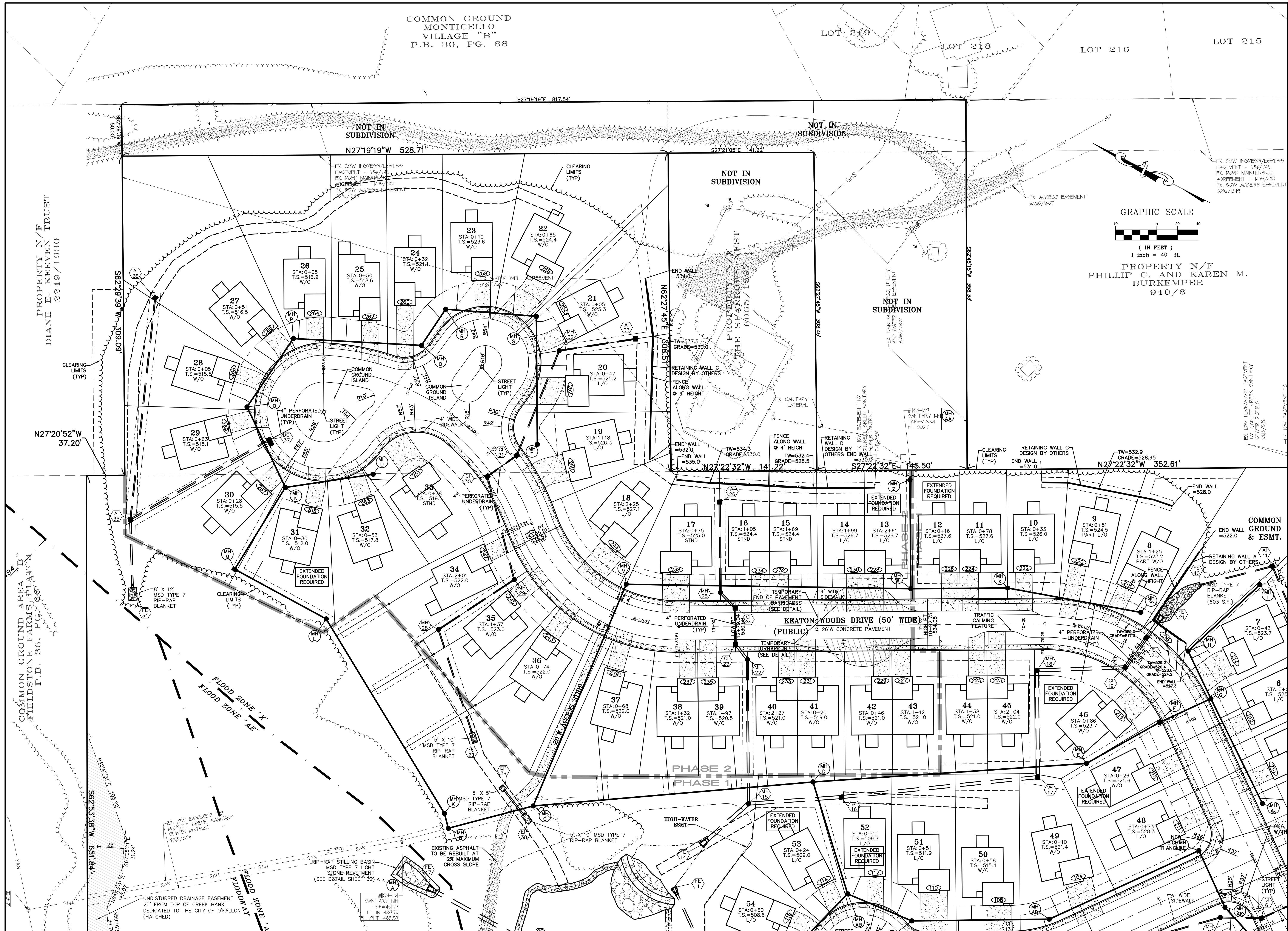
Developer / Owner:  
Bridgewater Communities, Inc.  
P.O. Box 4607  
Chesterfield, Missouri 63005  
636-294-6020

SITE PLAN

P+Z No. 18-003986  
June 7, 2018  
City No. #18-003984  
Permit #RSP18-000006

Page No.

6 of 32



PROPERTY N/F  
PHILLIP C. AND KAREN M.  
BURKEMPER  
940/6

PROPERTY N/F  
DIANE E. KEEVEN TRUST  
2249/1930

N27°20'52\"/>

COMMON GROUND AREA  
FIELDSTONE FARMS PLAT B  
P.B. 36, PG. 66

FLOOD ZONE 'X'  
FLOOD ZONE 'AE'

UNDISTURBED DRAINAGE EASEMENT  
25' FROM TOP OF CREEK BANK  
DEDICATED TO THE CITY OF FALLON  
(HATCHED)

EXISTING ASPHALT  
TO BE REBUILT AT  
2% MAXIMUM  
CROSS SLOPE

HIGH-WATER  
ESMT.

BY NEW TEMPORARY EASEMENT  
TO DAVENPORT GREENS SANITARY  
SEWER DISTRICT  
2/19/1991

MH#1-127  
SANITARY MH  
TOP=524.54  
FL=525.15

MH#2-127  
SANITARY MH  
TOP=524.54  
FL=525.15

MH#3-127  
SANITARY MH  
TOP=524.54  
FL=525.15

MH#4-127  
SANITARY MH  
TOP=524.54  
FL=525.15

MH#5-127  
SANITARY MH  
TOP=524.54  
FL=525.15

MH#6-127  
SANITARY MH  
TOP=524.54  
FL=525.15

MH#7-127  
SANITARY MH  
TOP=524.54  
FL=525.15

MH#8-127  
SANITARY MH  
TOP=524.54  
FL=525.15

MH#9-127  
SANITARY MH  
TOP=524.54  
FL=525.15

MH#10-127  
SANITARY MH  
TOP=524.54  
FL=525.15

MH#11-127  
SANITARY MH  
TOP=524.54  
FL=525.15

MH#12-127  
SANITARY MH  
TOP=524.54  
FL=525.15

MH#13-127  
SANITARY MH  
TOP=524.54  
FL=525.15

MH#14-127  
SANITARY MH  
TOP=524.54  
FL=525.15

MH#15-127  
SANITARY MH  
TOP=524.54  
FL=525.15

MH#16-127  
SANITARY MH  
TOP=524.54  
FL=525.15

MH#17-127  
SANITARY MH  
TOP=524.54  
FL=525.15

MH#18-127  
SANITARY MH  
TOP=524.54  
FL=525.15

MH#19-127  
SANITARY MH  
TOP=524.54  
FL=525.15

MH#20-127  
SANITARY MH  
TOP=524.54  
FL=525.15