

LEGEND:
 I.D. - NOMINAL PIPE SIZE
 O.D. - OUTSIDE DIAMETER OF PIPE
 H - COVER ABOVE TOP OF PIPE
 A - EMBEDDED BELOW PIPE (SEE TABLE)

TABLE OF EMBEDDED DEPTHS BELOW PIPE		
I.D.	MIN. SOIL	MIN. ROCK
27" & SMALLER	3"	6"

CLASS B - 6" MIN. 60°
 CLASS C - 6" MIN. 12" O.D.
 CLASS D - FLAT BOTTOM TRENCH WITH BELL HOLES AND HAND PLACED EMBEDDED

GRANULAR BEDDING SHALL BE CRUSHED ROCK OR PEA GRAVEL WITH NOT LESS THAN 95% PASSING 1/2" (85% PASSING 3/4" FOR 30" AND LARGER PIPE) AND NOT LESS THAN 80% RETAINED ON A #4 TO BE PLACED IN NOT MORE THAN 6" LAYERS AND COMPACTED BY SQUEEZING WITH A SHOVEL OR VIBRATING.

COMPACTED BACK FILL SHALL BE FINELY DIVIDED JOB EXCAVATED MATERIAL FREE FROM DEBRIS, ORGANIC MATERIAL AND STONES, PLACED IN UNIFORM LAYERS NOT MORE THAN 6" THICK, COMPACTED TO 95% MAXIMUM DENSITY AS DETERMINED BY A S.T.M. 1908, OR GRADED AGGREGATE. GRANULAR BACK FILL MATERIAL MAY BE SUBSTITUTED FOR ALL OR PART OF COMPACTED BACK FILL.

TAMPED BACK FILL SHALL BE FINELY DIVIDED JOB EXCAVATED MATERIAL FREE FROM DEBRIS, ORGANIC MATERIAL AND STONES, HAND PLACED IN UNIFORM LAYERS NOT MORE THAN 6" THICK AND TAMPED AROUND CONDUIT PIPE. GRANULAR BACK FILL MATERIAL MAY BE SUBSTITUTED FOR ALL OR PART OF TAMPED BACK FILL.

TRENCH BACK FILL SHALL BE AS REQUIRED IN THE "LAYING AND BACK FILL" SECTION OF THE DETAIL SPECIFICATIONS.

EMBEDDED THE TYPE OF EMBEDDED TO BE USED SHALL BE AS SPECIFIED IN THE PLANS AND SPECIFICATIONS.

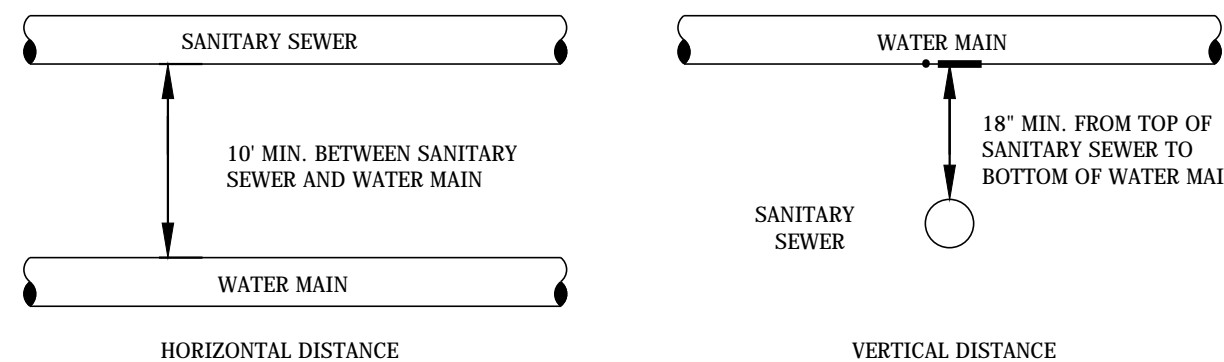
TRACER WIRE REQUIRED ON ALL WATER MAINS

WATER MAIN EMBEDDED

NOT TO SCALE

CITY OF FALLON
 ENGINEERING DEPARTMENT
 OF FALLON, MISSOURI

WATER MAIN
 EMBEDDED



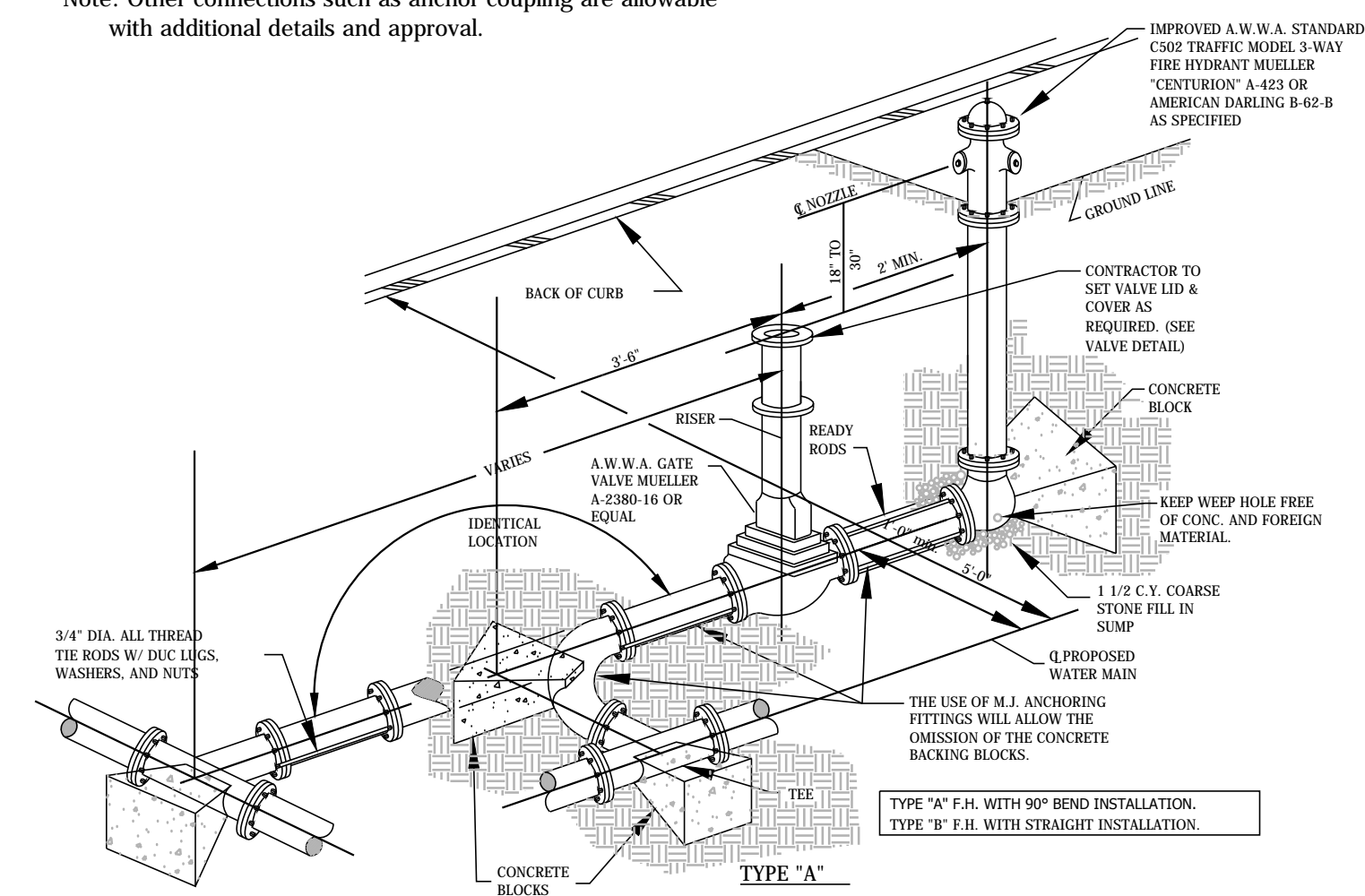
TYPICAL WATER AND SEWER SEPARATION

NOT TO SCALE

CITY OF FALLON
 ENGINEERING DEPARTMENT
 OF FALLON, MISSOURI

WATER AND SEWER
 SEPARATION DETAIL

Note: Other connections such as anchor coupling are allowable with additional details and approval.



FIRE HYDRANT DETAIL

NOT TO SCALE

CITY OF FALLON
 ENGINEERING DEPARTMENT
 OF FALLON, MISSOURI

FIRE HYDRANT
 DETAILS

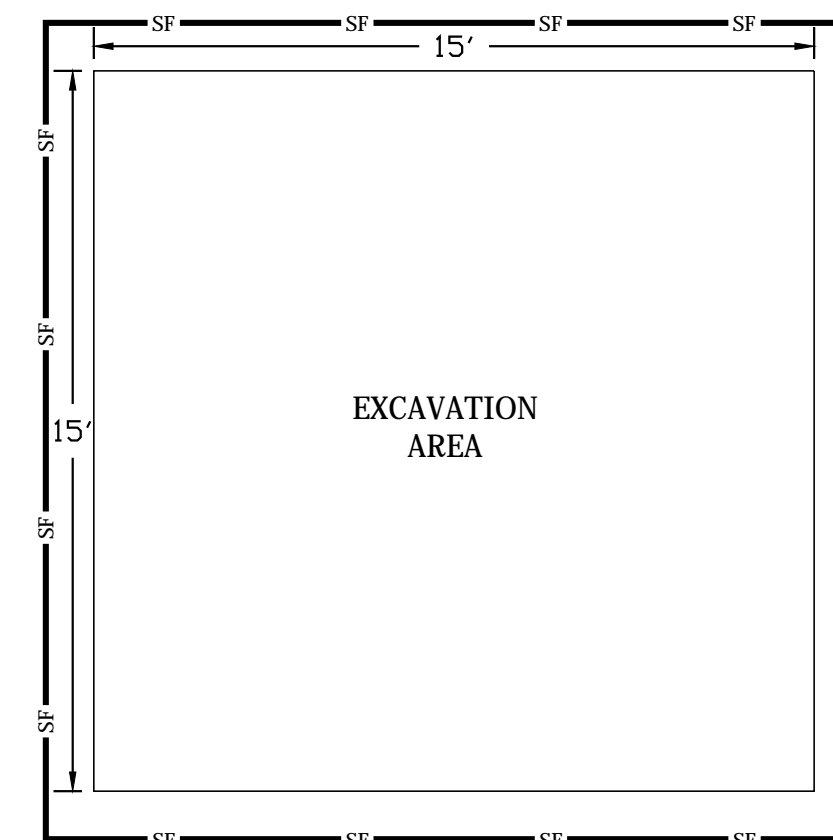


TYPICAL WATER MAIN INSTALLATION DETAILS

NOT TO SCALE

CITY OF FALLON
 ENGINEERING DEPARTMENT
 OF FALLON, MISSOURI

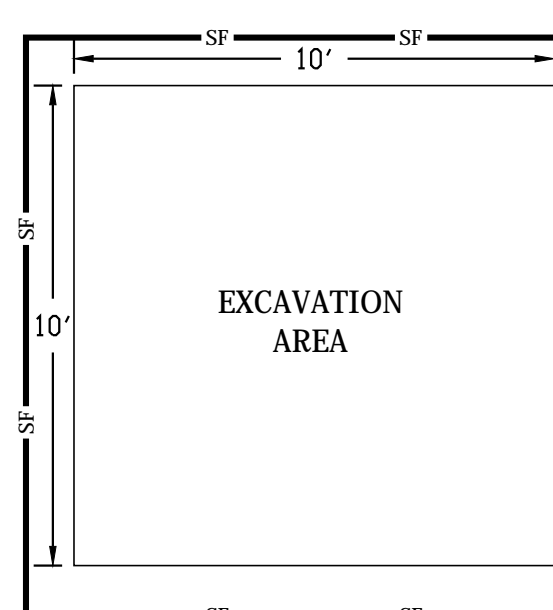
WATER MAIN
 INSTALLATION DETAIL



WATER MAIN TAP CONNECTION

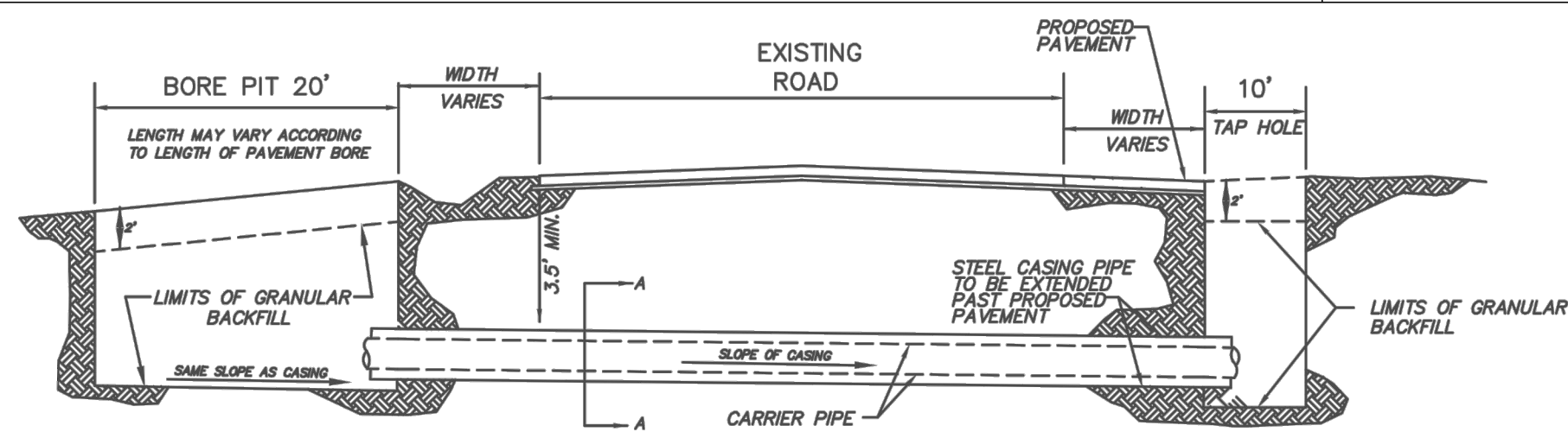
NOT TO SCALE

WATER CONNECTION
 EROSION CONTROL DETAILS



WATER SERVICE LATERAL CONNECTION

NOT TO SCALE



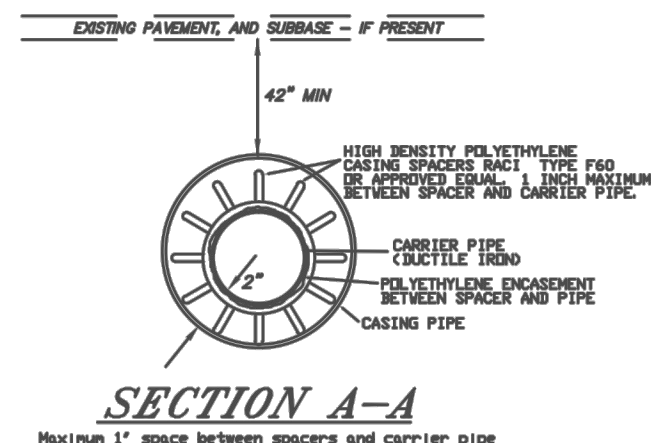
BORE DETAIL

BORING NOTES

- DO NOT SCALE DRAWING. FOLLOW DIMENSIONS.
- INSTALLATION OF THE CASING AND CARRIER PIPES SHALL MEET THE REQUIREMENTS FOR THE CITY OF FALLON SPECIFICATIONS.
- ALL JOINTS IN THE CASING PIPE SHALL BE WELDED.
- THE PIPE TO BE PLACED IN THE BORE HOLE SHALL BE CAST-IRON PIPE EXCEPT AS REQUIRED ON THE PLANS.
- STEEL CASING PIPE USED IN THE INSTALLATION OF WATER OR SEWER LINE AND CONDUITS SHALL HAVE A MINIMUM YIELD STRENGTH OF 35,000 P.S.I.
- CARRIER PIPE SHALL BE 12" DIA. PVC.
- CASING PIPE SHALL BE 24" DIA. STEEL, (0.281" WALL THICKNESS).
- NOTE: EXISTING FACILITIES ARE TO REMAIN IN USE AT ALL TIMES. IT IS THE RESPONSIBILITY OF THE CONTRACTOR TO LOCATE ALL SERVICE LINES AND UTILITIES PRIOR TO CONSTRUCTION.
- RESTRAINING JOINTS SHALL BE USED ON THE CARRIER PIPE.
- DESIGNER SHALL SUBMIT CARRIER PIPE AND CHASING PIPE SIZE AND COMBINATION FOR REVIEW AND APPROVAL.

CITY OF FALLON
 ENGINEERING DEPARTMENT
 OF FALLON, MISSOURI

WATER MAIN
 BORE & JACK DETAIL



ENCASEMENT SPACER DETAILS



CITY OF FALLON
 ENGINEERING DEPARTMENT
 OF FALLON, MISSOURI

WATER MAIN ENCASEMENT
 SPACER DETAILS

CITY OF FALLON, MISSOURI
 WEST TERRA WATER MAIN
 EXTENSION

LOCHMUELLER GROUP
 5650 Mexico Road, Suite 2
 St. Peters, Missouri 63376
 PHONE: 314.621.3395

ENGINEER SIGNATURE
 BLOCK

STATE OF MISSOURI
 JARED SHANE
 LESSER
 NUMBER
 FE-2016015699
 PROFESSIONAL ENGINEER
 12/22/2016

WATER MAIN DETAILS
 SHEET 2 OF 2
 CITY OF FALLON WATER DISTRIBUTION