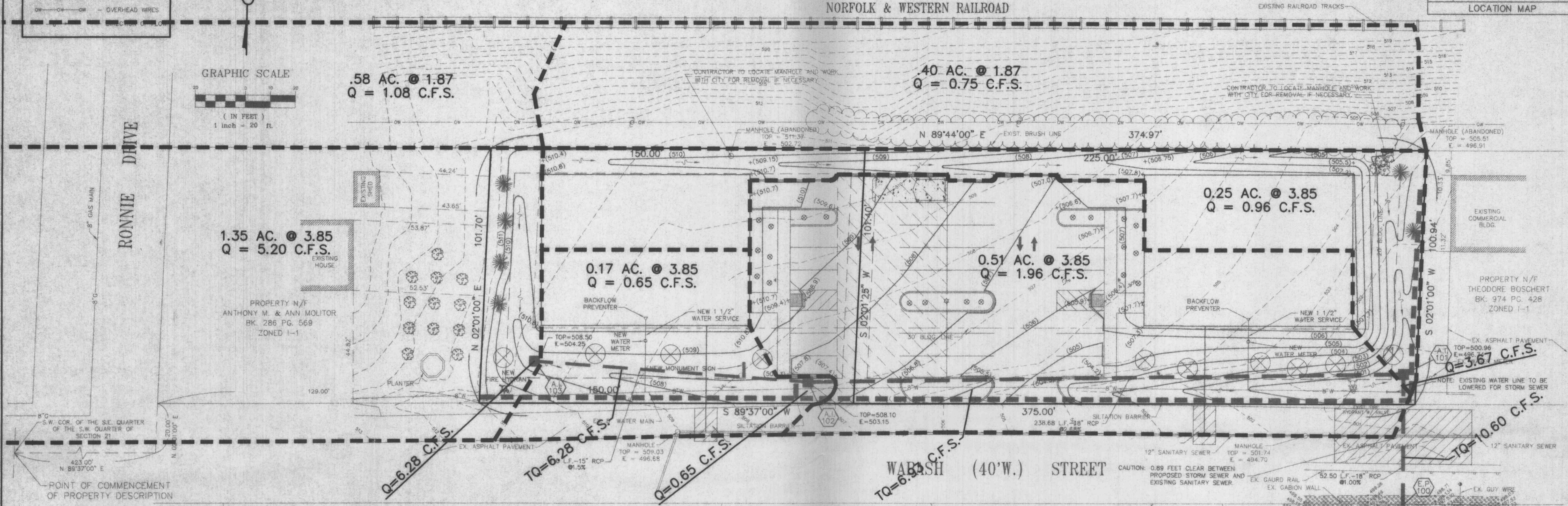
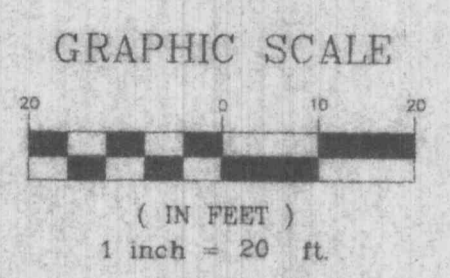
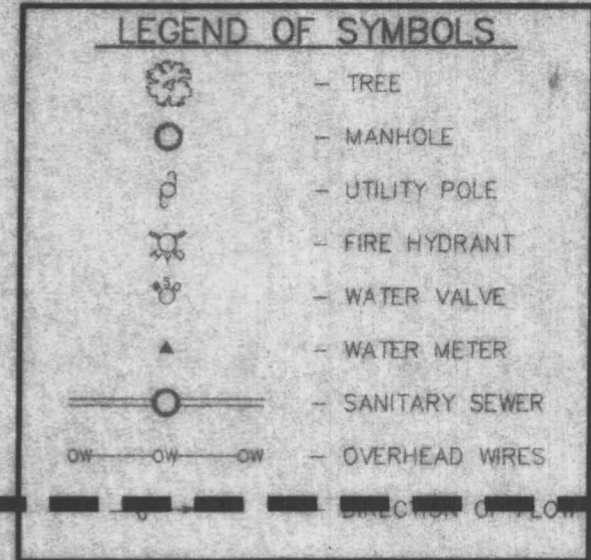
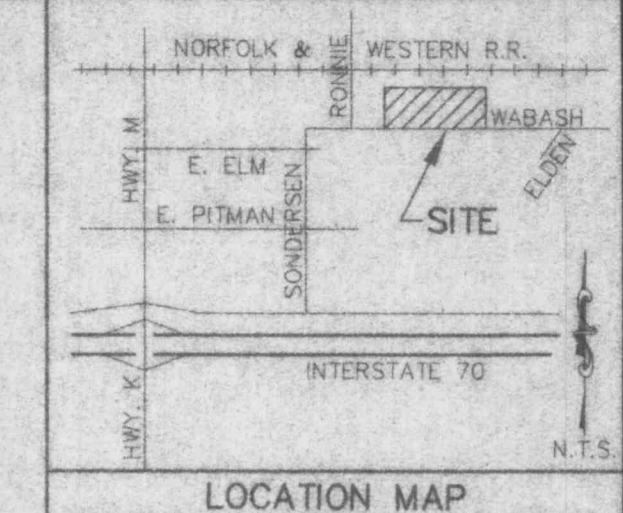


**A DRAINAGE AREA MAP FOR
WABASH INDUSTRIAL CENTER**
TWO TRACT OF LAND IN THE
SOUTHWEST QUARTER OF SECTION 21,
TOWNSHIP 47 NORTH, RANGE 3 EAST OF THE
FIFTH PRINCIPAL MERIDIAN, ST. CHARLES COUNTY, MISSOURI

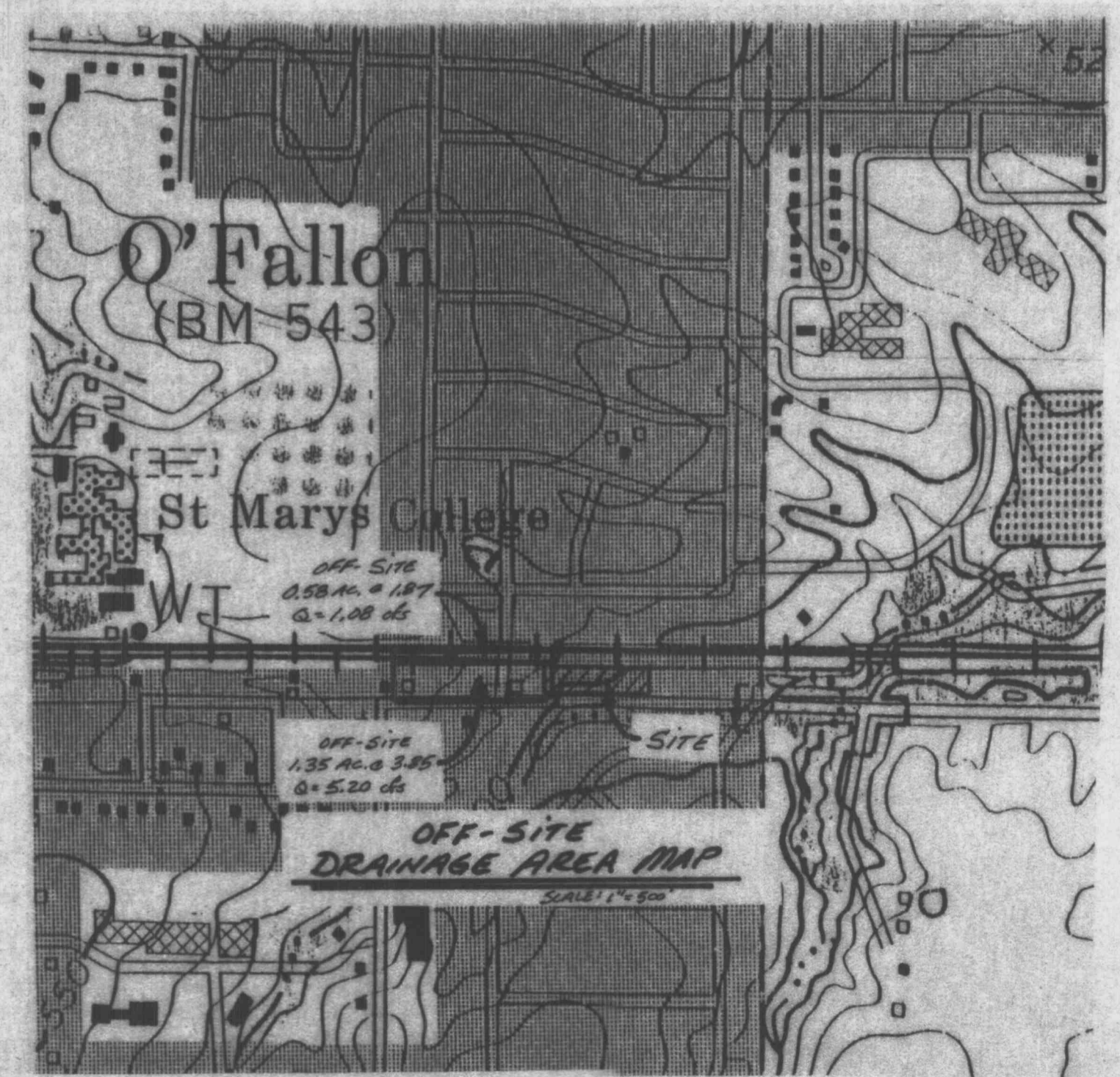
LANDSCAPE LEGEND

- = 2" CALIPER BRADFORD PEAR (11)
- = 6" HIGH SCOTCH PINE (5)
- = 24" JUNIPER (20)



PREPARED FOR:
DELORA BECKERLE
129 DOUBLE EAGLE DRIVE
ST. CHARLES, MO 63303
PHONE: (314) 946-9771

DISCLAIMER OF RESPONSIBILITY:
I hereby specify that the drawings intended to be authenticated by my seal are limited to the sheet, and I hereby disclaim any responsibility for all other drawings, specifications, estimates, reports or other documents or instruments relating to or intended to be used for any part or parts of the architectural, engineering project or survey.



PROPERTY N/F DAVID L. PETERS BK. 1703 PG. 1067 ZONED R-1

LOT 45 COUNTRY LIFE ACRES PLAT 3 P.B. 6 PGS. 54 & 55 ZONED R-1

LOT 44 COUNTRY LIFE ACRES PLAT 3 P.B. 6 PGS. 54 & 55 ZONED R-1

LOT 43 COUNTRY LIFE ACRES PLAT 3 P.B. 6 PGS. 54 & 55 ZONED R-1

LOT 42 COUNTRY LIFE ACRES PLAT 3 P.B. 6 PGS. 54 & 55 ZONED R-1

REVISIONS

5-14-96	CITY COMMENTS
9-23-96	CITY COMMENTS
11-13-96	CITY COMMENTS
01-23-97	STORM SEWERS

BFA
ENGINEERING
PLANNING
SURVEYING

1052 South Cloverleaf Drive
St. Peters, MO. 63376-6445
314-928-0552
FAX 928-1718

9-3-1996
DATE

95-7726
PROJECT NUMBER

2 OF 3
SHEET OF

7726.DWG
FILE NAME

DJB RLF
DRAWN CHECKED

"THIS SHEET FOR DRAINAGE AREAS ONLY, NOT TO BE USED AS CONSTRUCTION PLANS."