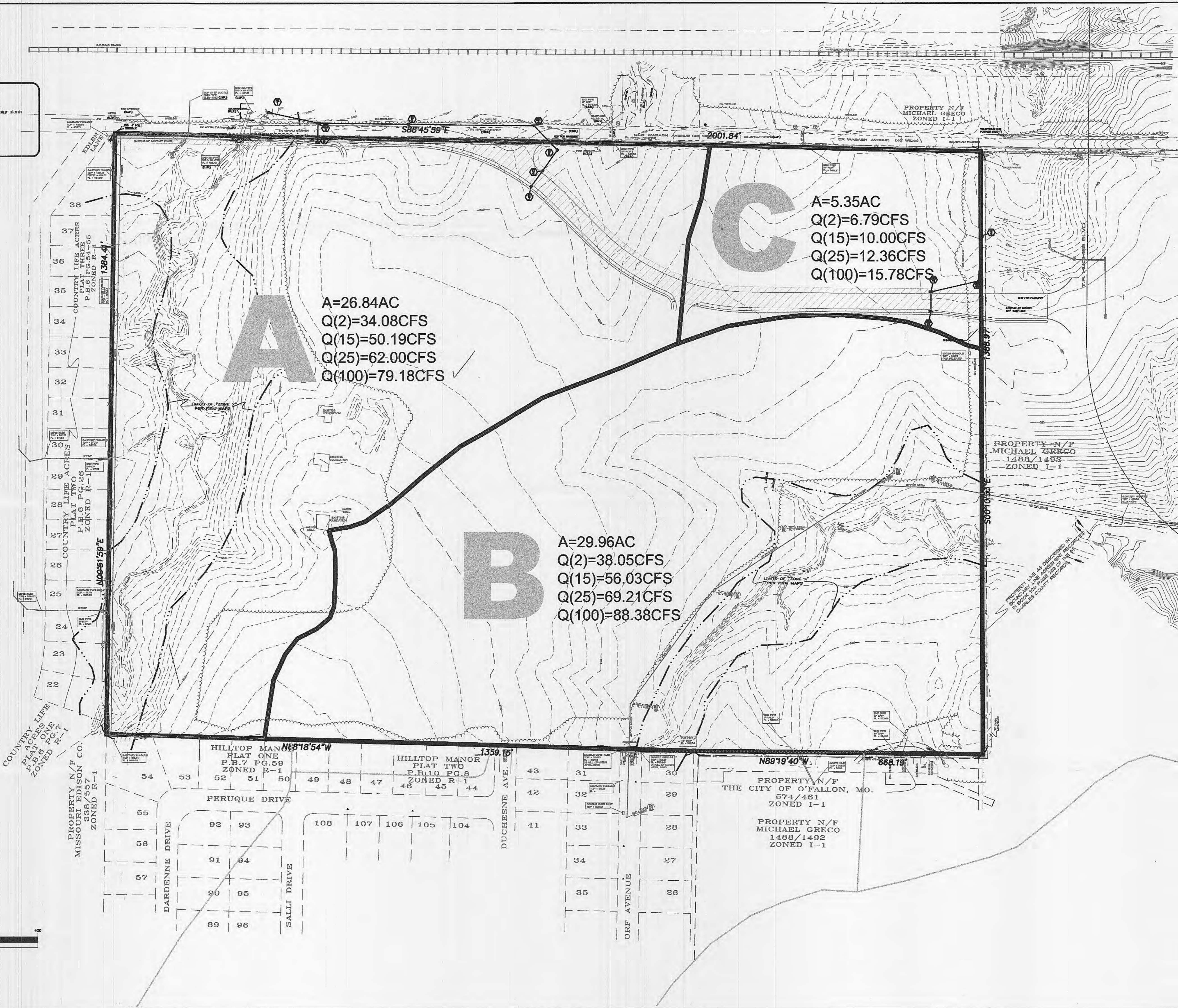


**Design Run-off Factors:**

Run-off factors based upon zoning and use for the fifteen (15) year design storm frequency are as follows:

Predeveloped Conditions	1.87
Single-family (10,000 sq. ft. or less)	2.64
Commercial & Industrial	3.85



**A**

A=26.84AC  
 Q(2)=34.08CFS  
 Q(15)=50.19CFS  
 Q(25)=62.00CFS  
 Q(100)=79.18CFS

**B**

A=29.96AC  
 Q(2)=38.05CFS  
 Q(15)=56.03CFS  
 Q(25)=69.21CFS  
 Q(100)=88.38CFS

**C**

A=5.35AC  
 Q(2)=6.79CFS  
 Q(15)=10.00CFS  
 Q(25)=12.36CFS  
 Q(100)=15.78CFS



GRAPHIC SCALE



( IN FEET )  
 1 inch = 100 ft.

ISSUE	DATE	REMARKS
1	1/25/05	Submitted to city for review.
2	9/19/05	Revised per city's review.

PREPARED BY:  
**LIBERTY ENGINEERING, L.L.C.**  
 P.O. Box 2 · Cottleville, MO 63338  
 Phone: (816) 744-5333  
 RESIDENTIAL - COMMERCIAL - MUNICIPAL

PREPARED FOR:  
**KAPLAN DEVELOPMENT, LLC**  
 P.O. Box 240  
 5701 PETERS, MO 63376  
 (636) 948-9971

PROJECT:  
**WABASH WOODS PHASE ONE**  
 EXISTING DRAINAGE AREA MAP

PROJECT NO: 04021-00  
 DESIGNED BY:  
 DRAWN BY:  
 CHECKED BY:  
 SHEET NO: 1 OF 2

The responsibility for professional engineering liability on this project shall rest with the engineer of record. Responsibility is not assumed for any errors or omissions in the project and specifically excludes reasons after this date unless reauthorized.