

DETENTION BASIN 'A' CALCULATIONS:

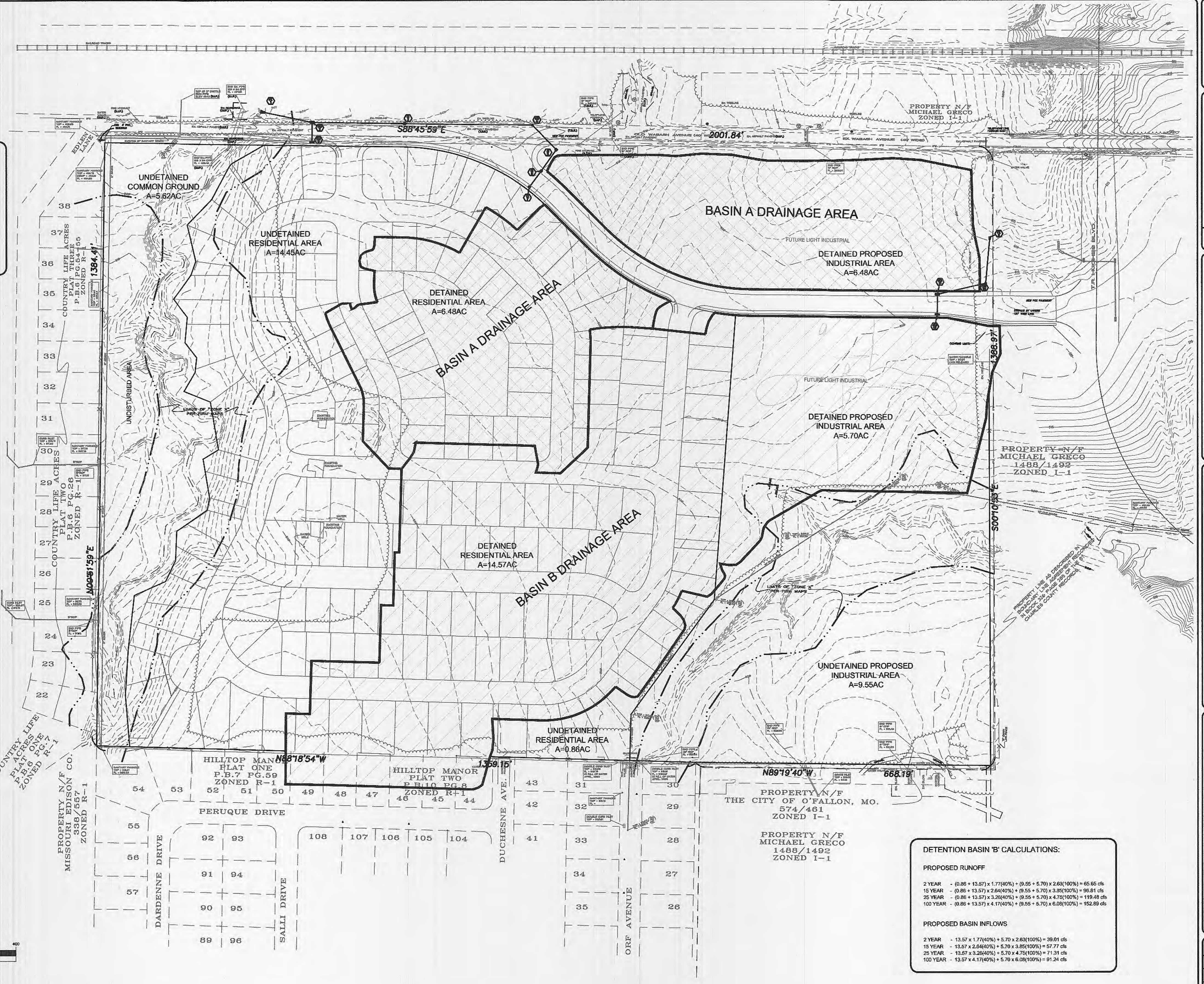
PROPOSED RUNOFF

2 YEAR - $5.62 \times 1.27(5\%) + (14.45 + 6.48) \times 1.77(40\%) + 5.87 \times 2.83(100\%) = 59.10$ cfs
 15 YEAR - $5.62 \times 1.87(5\%) + (14.45 + 6.48) \times 2.64(40\%) + 5.67 \times 3.85(100\%) = 67.50$ cfs
 25 YEAR - $5.62 \times 2.31(5\%) + (14.45 + 6.48) \times 3.26(40\%) + 5.67 \times 4.75(100\%) = 108.14$ cfs
 100 YEAR - $5.62 \times 2.95(5\%) + (14.45 + 6.48) \times 4.17(40\%) + 5.87 \times 6.08(100\%) = 138.33$ cfs

PROPOSED BASIN INFLOWS

2 YEAR - $6.48 \times 1.77(40\%) + 5.87 \times 2.63(100\%) = 26.39$ cfs
 15 YEAR - $6.48 \times 2.64(40\%) + 5.67 \times 3.85(100\%) = 38.95$ cfs
 25 YEAR - $6.48 \times 3.26(40\%) + 5.67 \times 4.75(100\%) = 48.06$ cfs
 100 YEAR - $6.48 \times 4.17(40\%) + 5.67 \times 6.08(100\%) = 61.60$ cfs

20 Year
 Prop
 $26.84 \times 2.95 = 79.18$ cfs ✓
 $14.45 \times 4.17 = 60.3$
 $5.62 \times 2.95 = 16.6$
 76.9
 LESS THAN PREVIOUS ✓
 O.K.



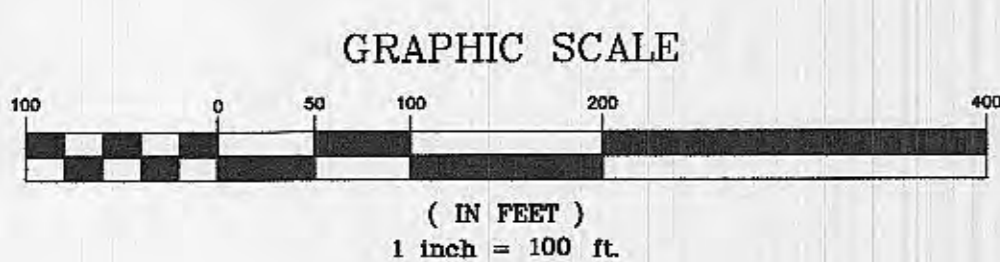
DETENTION BASIN 'B' CALCULATIONS:

PROPOSED RUNOFF

2 YEAR - $0.86 + 13.57 \times 1.77(40\%) + (9.55 + 5.70) \times 2.63(100\%) = 65.65$ cfs
 15 YEAR - $0.86 + 13.57 \times 2.64(40\%) + (9.55 + 5.70) \times 3.85(100\%) = 96.81$ cfs
 25 YEAR - $0.86 + 13.57 \times 3.26(40\%) + (9.55 + 5.70) \times 4.75(100\%) = 119.48$ cfs
 100 YEAR - $0.86 + 13.57 \times 4.17(40\%) + (9.55 + 5.70) \times 6.08(100\%) = 152.89$ cfs

PROPOSED BASIN INFLOWS

2 YEAR - $13.57 \times 1.77(40\%) + 5.70 \times 2.63(100\%) = 39.01$ cfs
 15 YEAR - $13.57 \times 2.64(40\%) + 5.70 \times 3.85(100\%) = 57.77$ cfs
 25 YEAR - $13.57 \times 3.26(40\%) + 5.70 \times 4.75(100\%) = 71.31$ cfs
 100 YEAR - $13.57 \times 4.17(40\%) + 5.70 \times 6.08(100\%) = 91.24$ cfs



ISSUE DATE - REMARKS

1	1/25/05	Submitted to city for review.
2	6/15/05	Revised per city's review.

The responsibility for professional engineering liability on this project is hereby limited to the set of plans authorized by the seal signature and date hereon attached. Responsibility for any other work or conditions not shown on these plans and specifications, particularly outside the limits of the site, remains with the client.

LIBERTY ENGINEERING, L.L.C.
 P.O. Box 2 - Cornwell, MO 63328 Phone: (636) 244-5333
 RESIDENTIAL - COMMERCIAL - MUNICIPAL

KAPLAN DEVELOPMENT, LLC
 P.O. BOX 340
 ST. PETERS, MO 63376
 (636) 946-8971

WABASH WOODS PHASE ONE
 DETENTION BASIN DRAINAGE MAP

PROJECT NO: **04021-00**
 DESIGNED BY:
 DRAWN BY:
 CHECKED BY:
 SHEET NO: **2** OF **2**