

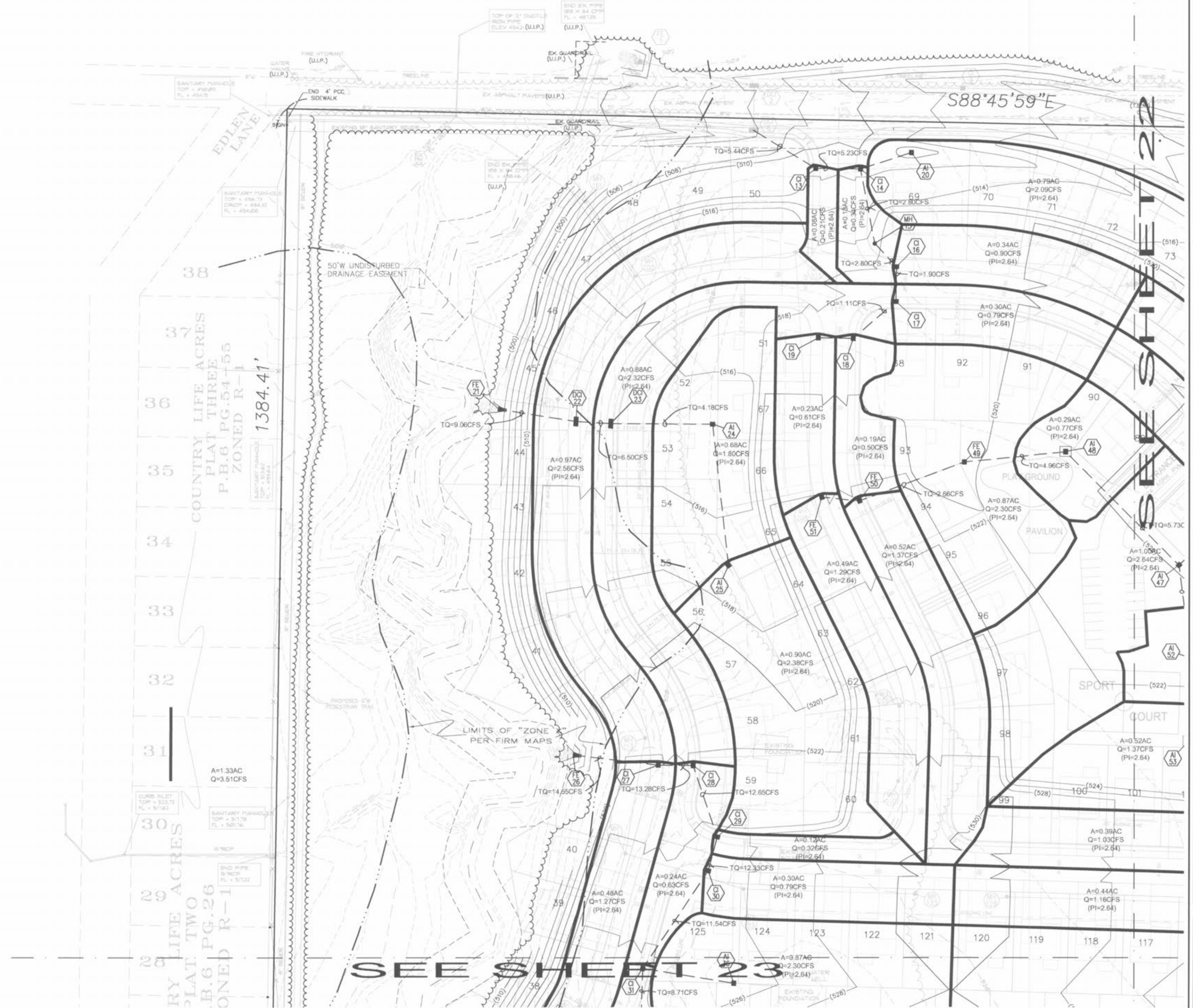
THIS SHEET FOR DRAINAGE AREAS ONLY!

Design Run-off Factors:

Run-off factors based upon zoning and use for the fifteen (15) year design storm frequency are as follows:

Predeveloped Conditions	1.87
Single-family (10,000 sq ft. or less)	2.64
Commercial & Industrial	3.85

TYPICAL LOT DRAINAGE
NOT TO SCALE



ISSUE DATE - REMARKS

1	1/29/05	- Submittal to city for review.
2	6/15/05	- Revised per city's review.
3	7/29/05	- Revised per city's review.

This drawing is the property of Liberty Engineering, L.L.C. It is hereby issued to the set of plans attached. Responsibility is assumed for all other engineering plans involved in this project and any subsequent revisions shall be given priority.

PREPARED BY:

LIBERTY ENGINEERING, L.L.C.
P.O. Box 2 - Colleville, MO 63338 Phone: (636) 244-0333

RESIDENTIAL - COMMERCIAL - MUNICIPAL

PREPARED FOR:

KAPLAN DEVELOPMENT, LLC
P.O. BOX 340
ST. PETERS, MO 63376
(636) 846-6971

PROJECT:

WABASH WOODS PHASE ONE
DRAINAGE PLAN

PROJECT NO: **04021-00**

DESIGNED BY:

DRAWN BY:

CHECKED BY:

SHEET NO. **21** OF **31**