

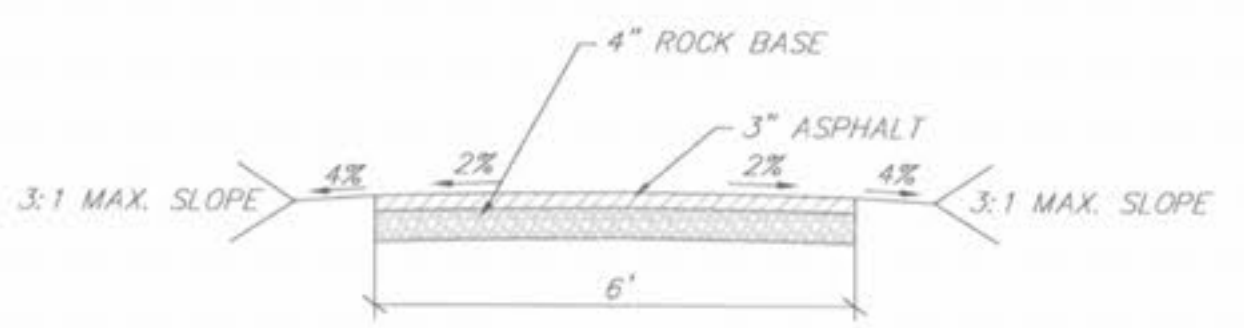
HANDICAPPED RAMP DETAIL
NOT TO SCALE

GRADE ALONG CURB (G)	MIN. LENGTH OF RAMP SLOPE (L)
0 TO +2	4
+2.01 TO +3	5
+3.01 TO +4	6
+4.01 TO +5	8
+5.01 TO +6	11
GREATER THAN +6	15

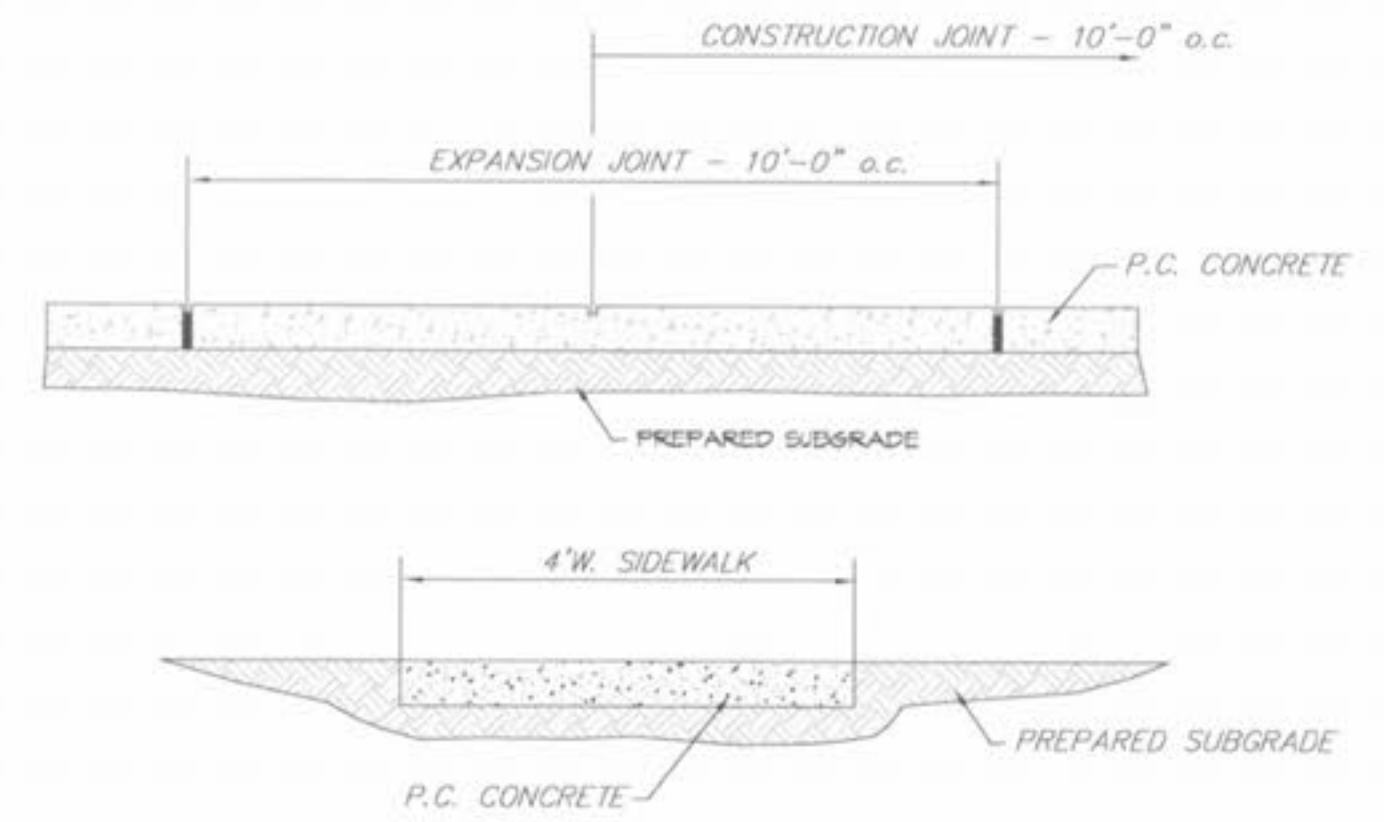
NOTE: Positive (+) "G" - Proceeding away from intersection and up a grade.
Negative (-) "G" - Proceeding away from intersection and down a grade.

GENERAL NOTES

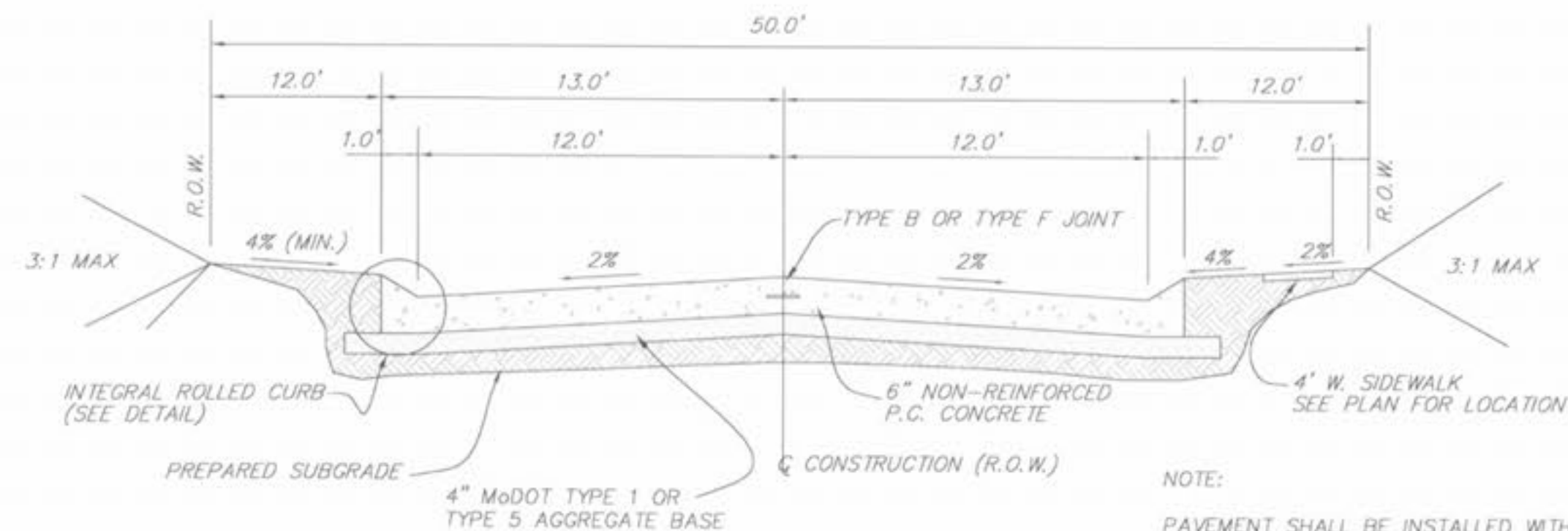
- Do not scale drawing. Follow dimensions.
- Sidewalks and sidewalk curb ramps shall be constructed in accordance with these details and the current approved "Americans with Disabilities Act Accessibility Guidelines" (A.D.A.A.G.).
- Provide a landing at the top of each straight ramp when Grade Along Curb ("G") is greater than +2% and less than +7%. For other values of "G", including all negative (-) values, no landing is required.
- Minimum sidewalk width along 3" rolled curb shall be 4 feet.
- Maximum sidewalk cross slope 0.02"/ft.
- All sidewalk sections shall be 4" thick, except where indicated otherwise by shaded portions shown on details. All sidewalk sections and curb ramps, regardless of thickness, shall be paid for as "Concrete Sidewalk".
- Where curb ramp meets pavement, bullnose will not be permitted.
- Construct a diagonal ramp when the maximum corner radius allowed for a straight ramp is exceeded.
- If integral concrete curb is constructed, strike a dummy joint across bottom of ramp at curb line. If concrete curb is down-dow, block out pavement to provide full depth curb across ramp from outer point of curb taper to outer point of curb taper.
- For sidewalk locations on cut-dw-sacs, refer to "Pavement Construction Details".
- For pavement longitudinal and transverse joints and dowel and tie bar requirements and dimensions, refer to the "Pavement Construction Details for Joints and Curbs" "Joints and Curbs", Standard Drawing CS02.03.
- For roadway cross slopes, pavement types, and thicknesses, refer to "Standard Typical Section".
- The intersection of two sidewalks or the intersection of a sidewalk and a driveway may serve as a wheelchair passing spaces on sidewalks less than 5 feet wide.



PEDESTRIAN TRAIL
NOT TO SCALE

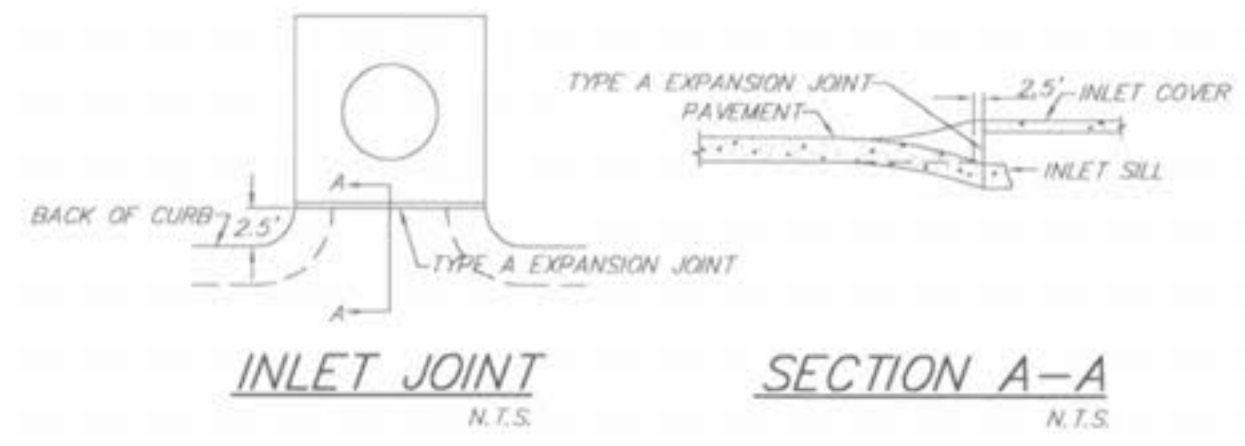


CONCRETE SIDEWALK DETAIL
NOT TO SCALE



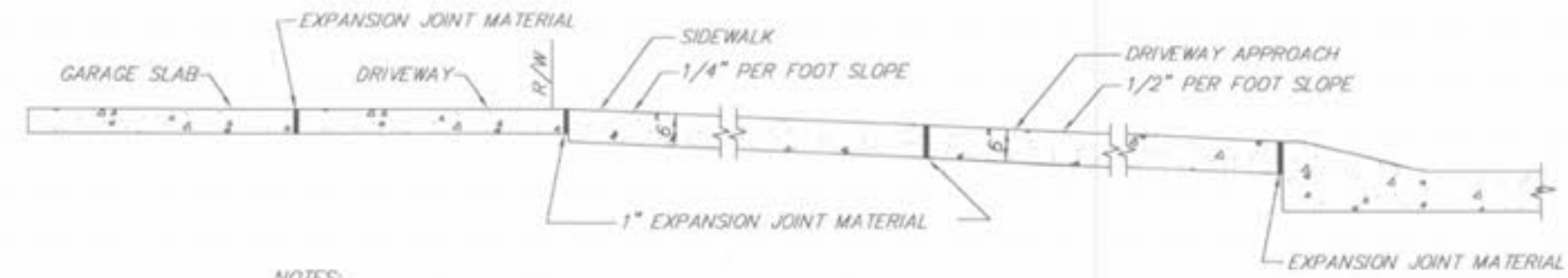
TYPICAL SECTION
(26" W. P.C. CONC. PAVEMENT)
(NOT TO SCALE)

NOTE: PAVEMENT SHALL BE INSTALLED WITH UNDERDRAINS PER CITY REQUIREMENT. SEE EXHIBIT "A" IN CITY ORDINANCE.



NOTES

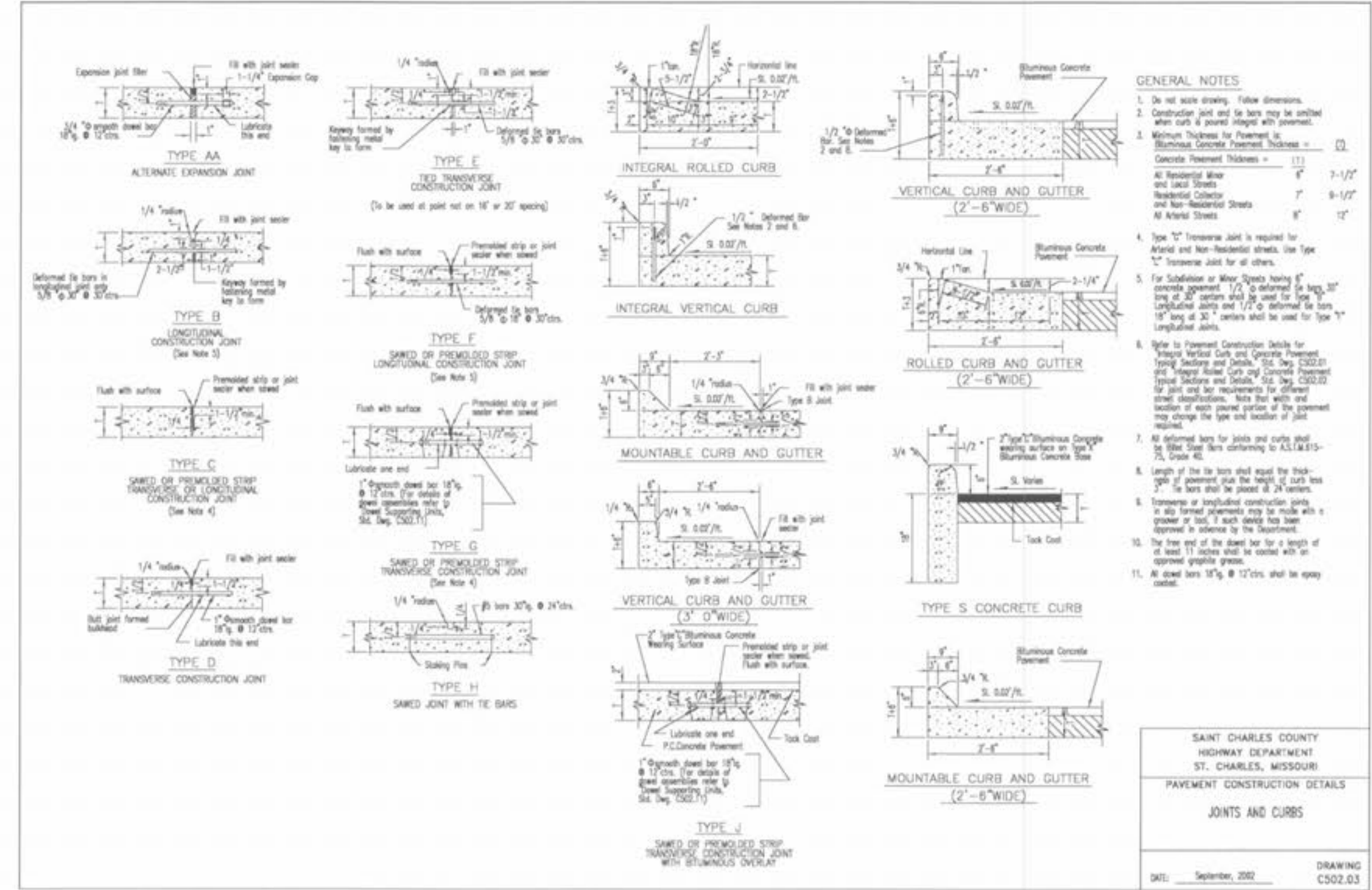
- ALL CATCH BASINS SHALL BE SEPARATED FROM THE PAVEMENT AND CURB BY EXPANSION JOINT MATERIAL EXTENDING COMPLETELY THROUGH CURB AND SLAB. MANHOLE CASTINGS WITHIN THE PAVEMENT LIMITS SHALL BE BOXED IN AS SHOWN.
- WHEN A JOINT FALLS WITHIN 5 FEET OF OR CONTACTS BASIN, MANHOLES OR OTHER STRUCTURES, SHORTEN ONE OR MORE PANELS EITHER SIDE OF OPENING TO PERMIT JOINT TO FALL ON ROUND STRUCTURES AND AT OR BETWEEN CORNERS OF RECTANGULAR STRUCTURES.
- T = 6" ON LOCAL STREET.
- T = 7" ON MAJOR OR THRU STREET.



- NOTES:
- A 1" JOINT IS REQUIRED AT THE CURB AND GARAGE FOR ALL DRIVEWAYS LOCATED ON THE OUTER EDGE OF CURVED PAVEMENT.
 - A 1/2" JOINT IS REQUIRED AT THE CURB AND GARAGE FOR ALL DRIVEWAYS LOCATED ON TANGENT SECTIONS OF PAVEMENT OR ON THE INNER EDGE OF CURVED PAVEMENT.
 - EXPANSION JOINT MATERIAL MUST EXTEND THROUGH THE FULL DEPTH OF THE PAVEMENT.

INTEGRAL CURB AT DRIVEWAYS

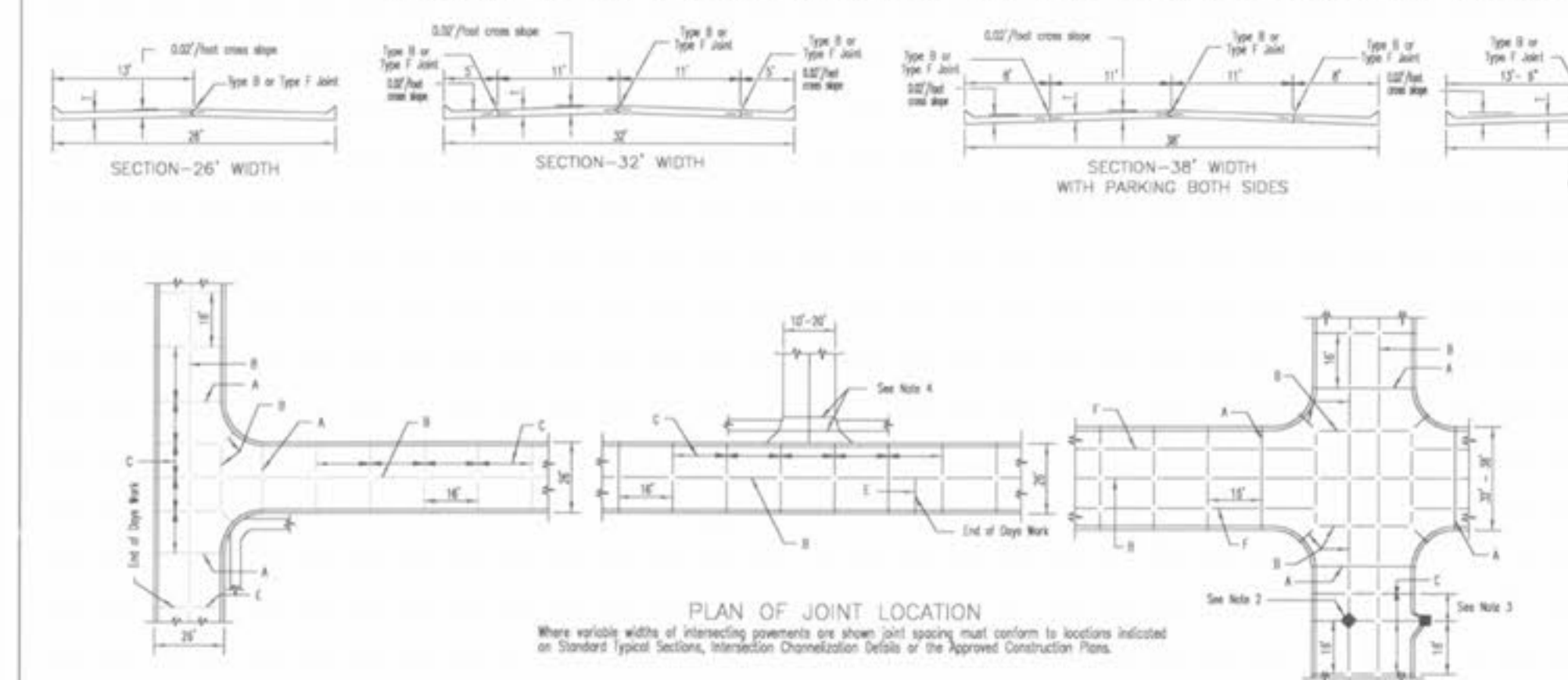
N.T.S.



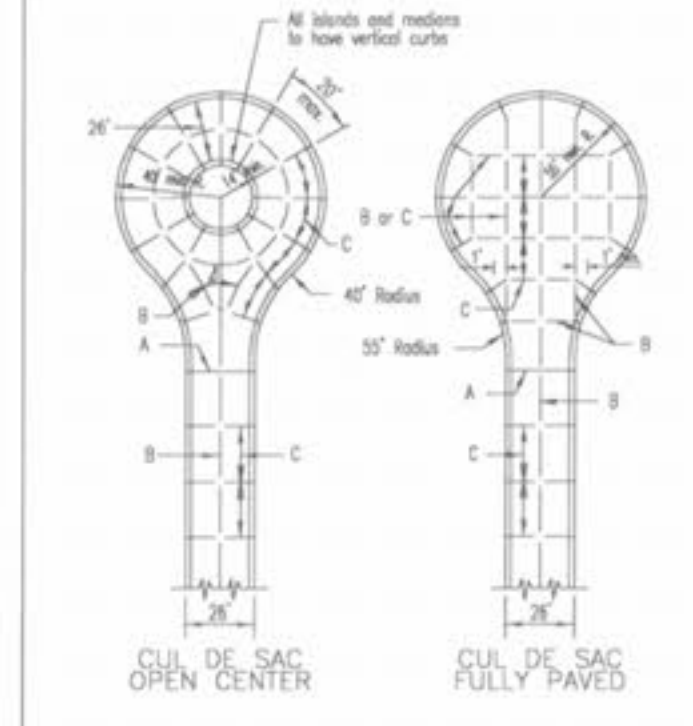
- GENERAL NOTES**
- Do not scale drawing. Follow dimensions.
 - Expansion joint and tie bars may be omitted when curb is poured integral with pavement.
 - Minimum thickness for concrete:
 - Concrete Pavement Thickness = (1) 4"
 - Horizontal Slab and Seal Streets = 7"
 - Non-Residential Streets = 8"
 - Residential Streets = 10"
 - Type "C" transverse joint is required for All and Non-Residential streets. Use Type "E" transverse joint for all others.
 - For Substitution or Alter Types Refer to "Pavement Construction Details for Joints and Curbs" Standard Drawing CS02.03.
 - Integral curb and gutter shall be cast with and finish on same side of the pavement. Integral curb and gutter shall be cast with and finish on same side of the pavement.
 - All integral curb for joints and curb shall be 4" thick. Integral curb for joints shall be 4" thick. Integral curb for joints shall be 4" thick.
 - Integral curb and gutter shall be cast with and finish on same side of the pavement.
 - Integral curb and gutter shall be cast with and finish on same side of the pavement.
 - Integral curb and gutter shall be cast with and finish on same side of the pavement.
 - Integral curb and gutter shall be cast with and finish on same side of the pavement.

SAINT CHARLES COUNTY
HIGHWAY DEPARTMENT
ST. CHARLES, MISSOURI
PAVEMENT CONSTRUCTION DETAILS
JOINTS AND CURBS
DATE: September, 2002
DRAWING: CS02.03

INTEGRAL ROLLED CURB AND CONCRETE PAVEMENT TYPICAL SECTIONS AND DETAILS

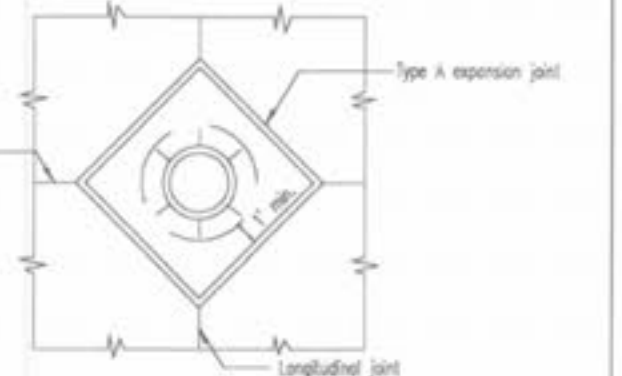


- GENERAL NOTES**
- Do not scale drawing. Follow dimensions.
 - All street inlets shall be separated from the pavement and curb by expansion joint material extending completely through curb and slab. Manhole casting within the pavement limits shall be boxed in.
 - When a joint falls within 5 ft. of, or contacts inlets, manholes, or other structures, shorten one or more panels either side of opening to permit joint to fall on round structures and at or between corners of rectangular structures.
 - Driveway configurations are shown in the "Reference Construction Details" for "Joints and Curbs", Standard Drawing CS02.03. Note that the width and location may change the type of joint required.
 - Construction joints and tie bars may be omitted when curb is poured monolithic with pavement.
 - Minimum thickness for Pavement is:
 - Residential 26" wide Streets = 6"
 - Residential 32"-36" wide Streets = 7"
 - For joint and bar requirements refer to the "Pavement Construction Details for Joints and Curbs", Standard Drawing CS02.03. Note that the width and location may change the type of joint required.
 - Transverse or longitudinal construction joints in slip formed pavements may be made with a groover or tool, if such device has been approved in advance by the Department.
 - The locations of the Type B longitudinal construction joints in the sections may be interchanged for the different widths of construction if approved by the Department.



STREET	JOINT TYPE	JOINT AND BAR REQUIREMENTS	
		JOINT	BAR
3 LANE RESIDENTIAL 32'-36" wide pavement	Transverse	TYPE C	no steel bars
	Longitudinal	Within a panel section: TYPE F 3/8" diameter tie bars @ 30' cts.	At the edge between two panel sections: TYPE B 1/2" diameter tie bars @ 30' cts.
7" thick concrete	Expansion	TYPE A	no steel bars
	Transverse	TYPE C	no steel bars
RESIDENTIAL 2 LANE 26" wide pavement	Longitudinal	Edg With Construction: TYPE B modified with 1/2" diameter tie bars @ 30' cts.	Edg With Construction: TYPE B modified with 1/2" diameter tie bars @ 30' cts.
	Expansion	TYPE A	no steel bars

NOTE: Joint filler material shall meet ASTM designations as follows:
Blumhaus type ASTM D-3405 AGMT M-301 or
Non-reinforcing & modified Blumhaus type (Type) ASTM D-1193-74 AGMT M-173-94
Non-reinforcing & modified non-blumhaus type (Joint) ASTM D-3406



MANHOLE BOXING
SAINT CHARLES COUNTY
HIGHWAY DEPARTMENT
ST. CHARLES, MISSOURI
PAVEMENT CONSTRUCTION DETAILS
INTEGRAL ROLLED CURB AND CONCRETE PAVEMENT
TYPICAL SECTIONS AND DETAILS
DATE: October, 2002
DRAWING: CS02.02



PREPARED BY: REMARKS
1. 1/25/03 - Submitted to city for review.
2. 6/15/03 - Revised per city's review.
3. 7/29/05 - Revised per city's review.

LIBERTY ENGINEERING, L.L.C.
RESIDENTIAL - COMMERCIAL - MUNICIPAL
P.O. Box 2 - Collierville, MO 63038
Phone: (636) 244-9333

PREPARED FOR: KAPLAN DEVELOPMENT, LLC
P.O. BOX 340
ST. PETERS, MO 63376
(636) 946-8871

PROJECT: WABASH WOODS PHASE ONE
PAVEMENT DETAILS / SUBDIVISION STREETS

PROJECT NO: 04021-00
DESIGNED BY:
DRAWN BY:
CHECKED BY:
SHEET NO: 30 OF 31
DRAWING: CS02.02