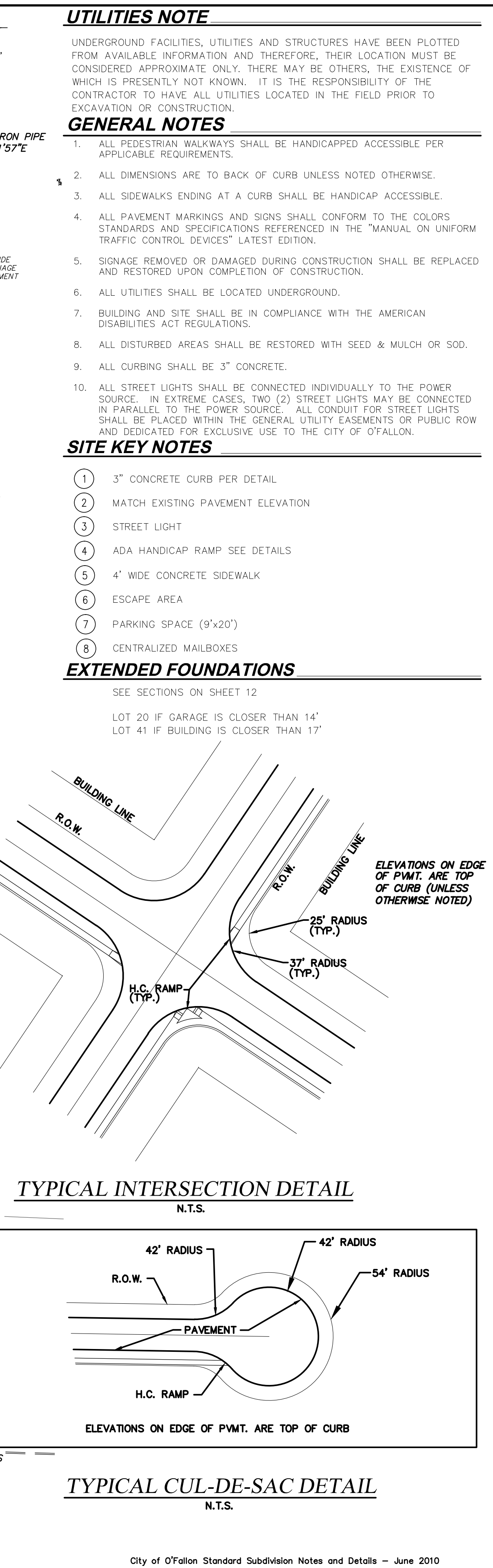
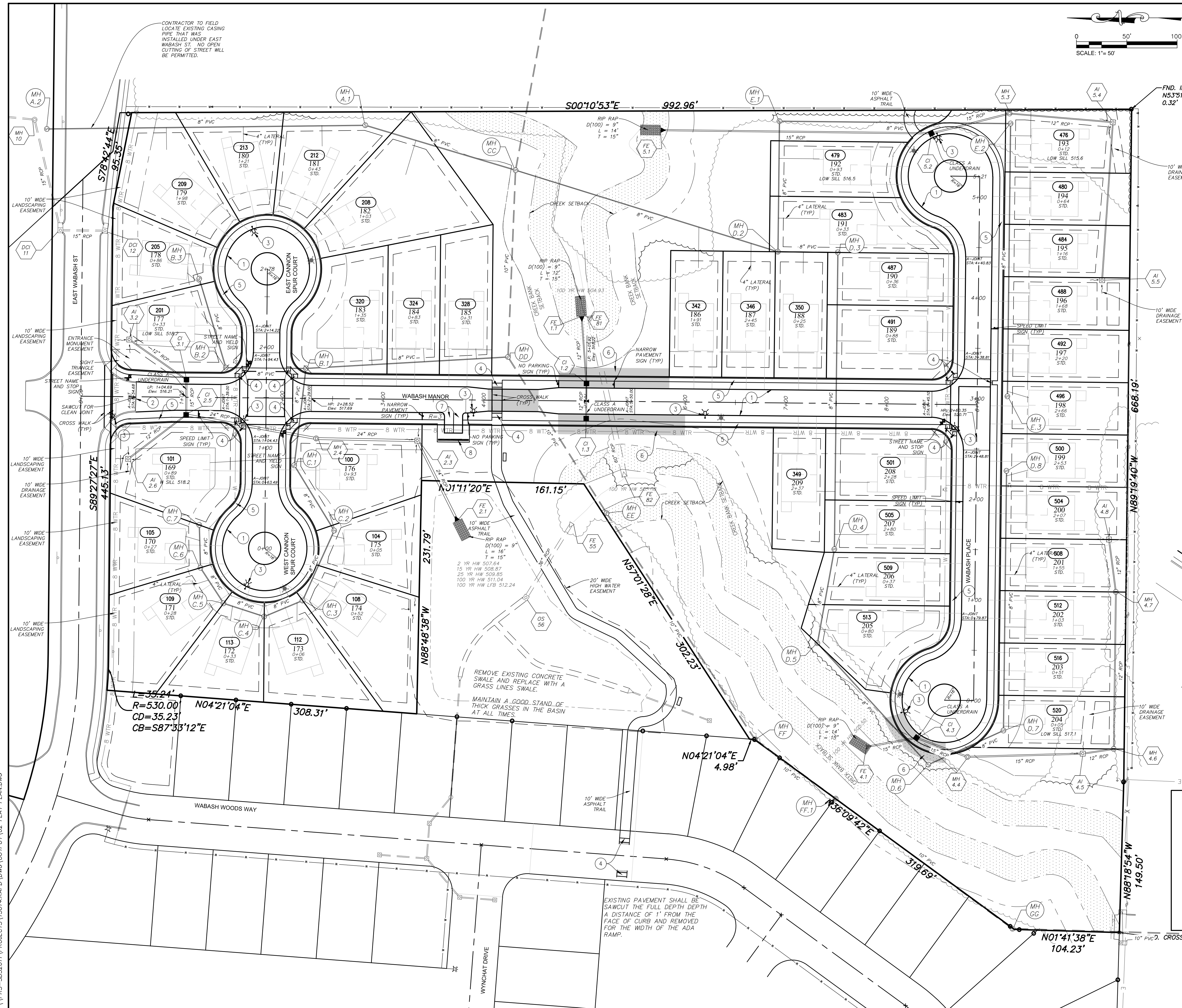


\\PRS-SB52011\PROJECTS\5014.KAPD\DWG\OUTPUT\02_FLAT_PLAN.DWG



PROJECT TITLE
IMPROVEMENT PLANS
WABASH WOODS
PHASE TWO
FLAT PLANS

PICKETT, RAY & SILVER INC
 CIVIL ENGINEERING, LAND SURVEYING,
 AND NATURAL RESOURCES SERVICES

St. Peters
 22 Richmond Center Court
 St. Peters, MO 63376
 Phone (636) 397-1211 Fax (636) 397-1104
 www.prs.com 1-800-708-3918
 PFS No. 15014.KAPD.00R
 TASK 002

ENGINEER'S AUTHORIZATION
 THE RESPONSIBILITY FOR PROFESSIONAL ENGINEERING LIABILITY ON THIS PROJECT IS HEREBY LIMITED TO THE SET OF PLANS AUTHENTICATED BY THE SEAL, SIGNATURE, AND DATE HEREON ATTACHED. RESPONSIBILITY IS DISCLAIMED FOR ALL OTHER ENGINEERING PLANS INVOLVED IN THIS PROJECT AND SPECIFICALLY EXCLUDES REVISIONS AFTER THIS DATE UNLESS AUTHENTICATED.

PICKETT, RAY & SILVER, INC. MO. LICENSE #000326

KARL A. SCHOENIKE, P.E.
 PROFESSIONAL ENGINEER LICENSE 2003015039

STATE OF MISSOURI
KARL ANTHONY SCHOENIKE
 NUMBER
 PE-2003015039
 PROFESSIONAL ENGINEER

05/02/16
 ELECTRONIC SEAL

Developer / Owner Information

LK PROPERTIES II, LLLP
 PO Box 340
 St. Peters, Missouri 63376

P+Z No. 20100.04
 City No. 15-639-SF

Page No. 03 of 24
 FLAT PLANS

City of O'Fallon Standard Subdivision Notes and Details - June 2010

*** O'FALLOON FOR APPROVAL *** 03/02/16 ***