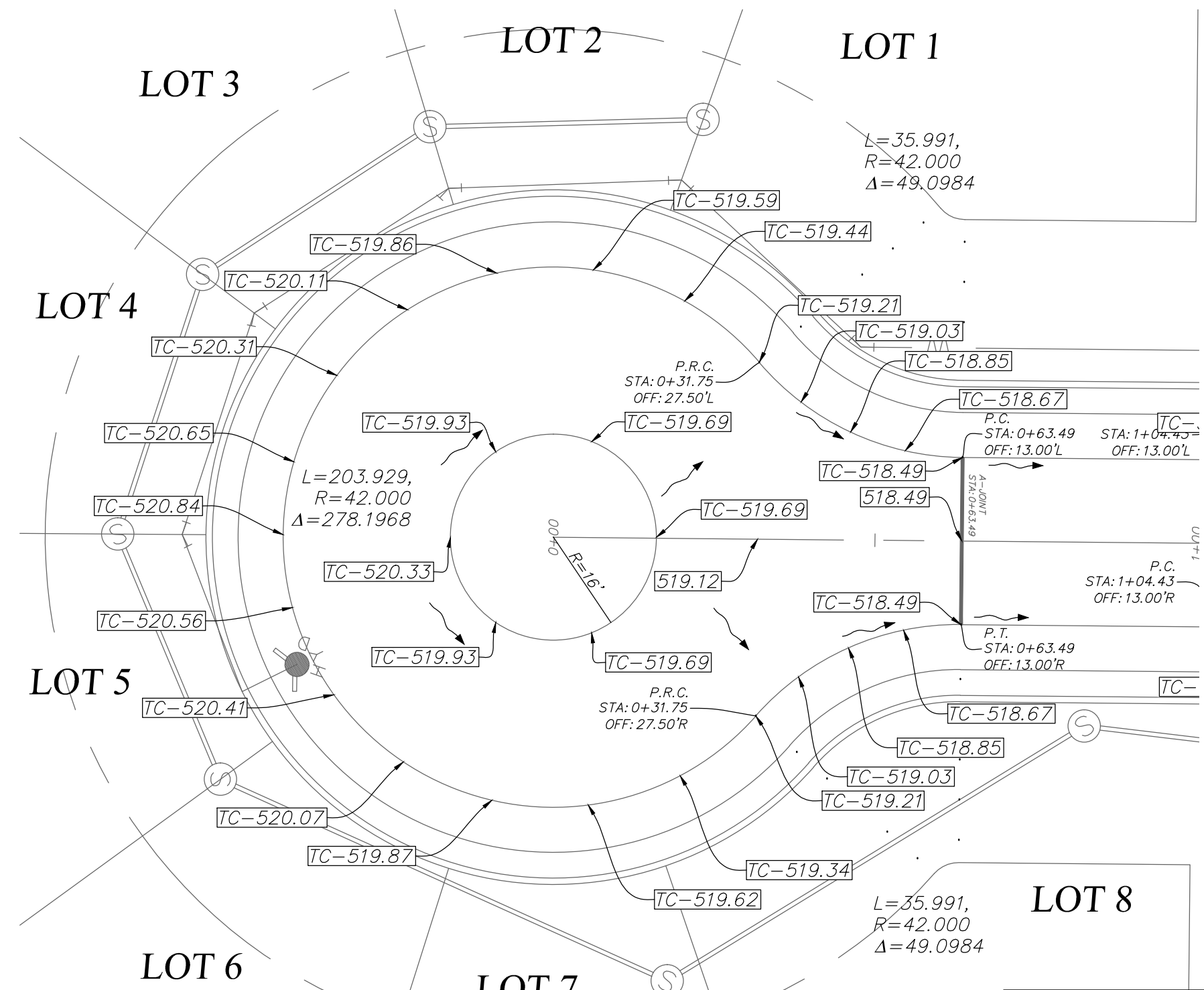
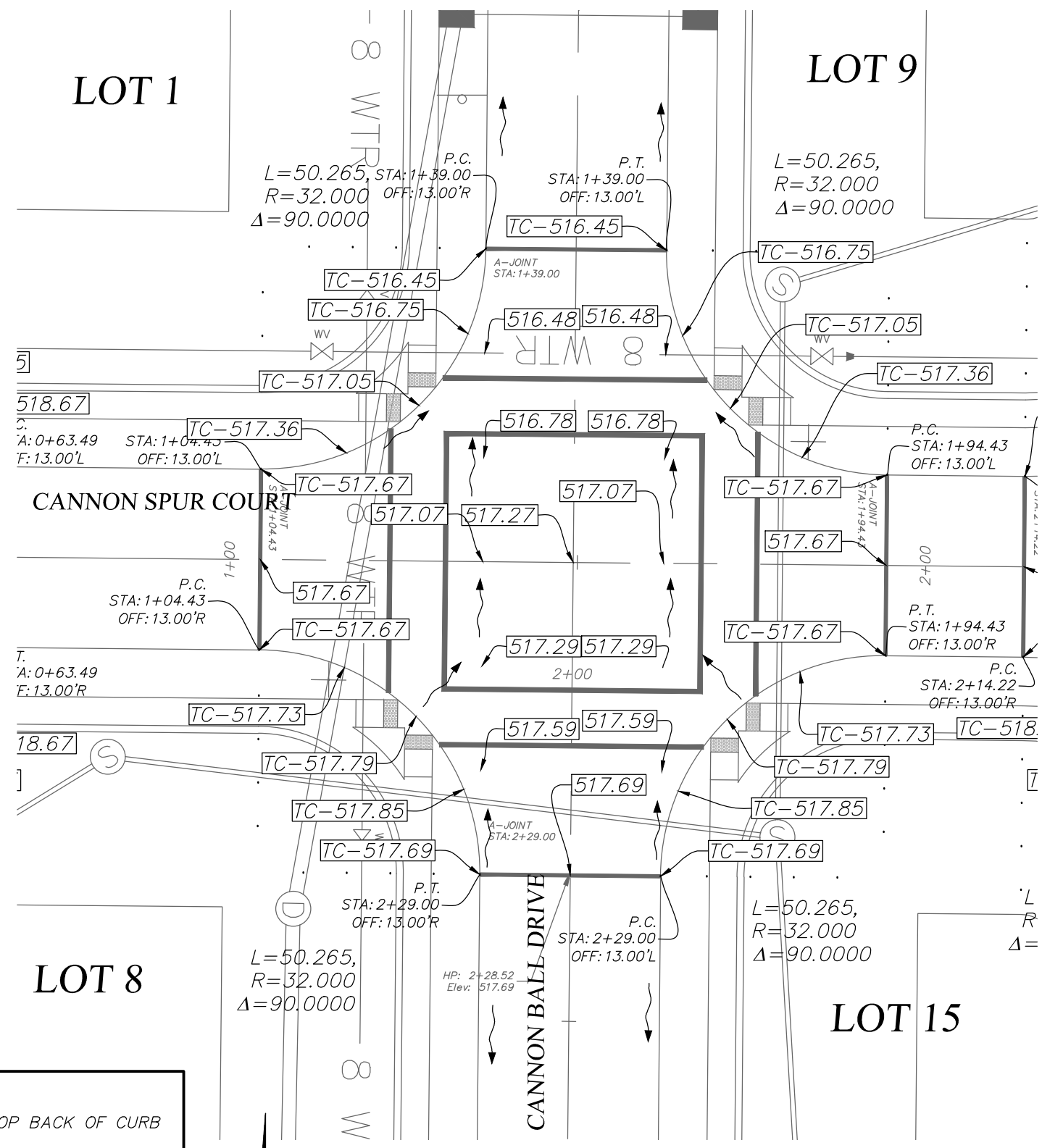


\\PRS-S552011\PROJECTS\5014-KAPD\DWG\OUTPUT\06_WARPING.DWG

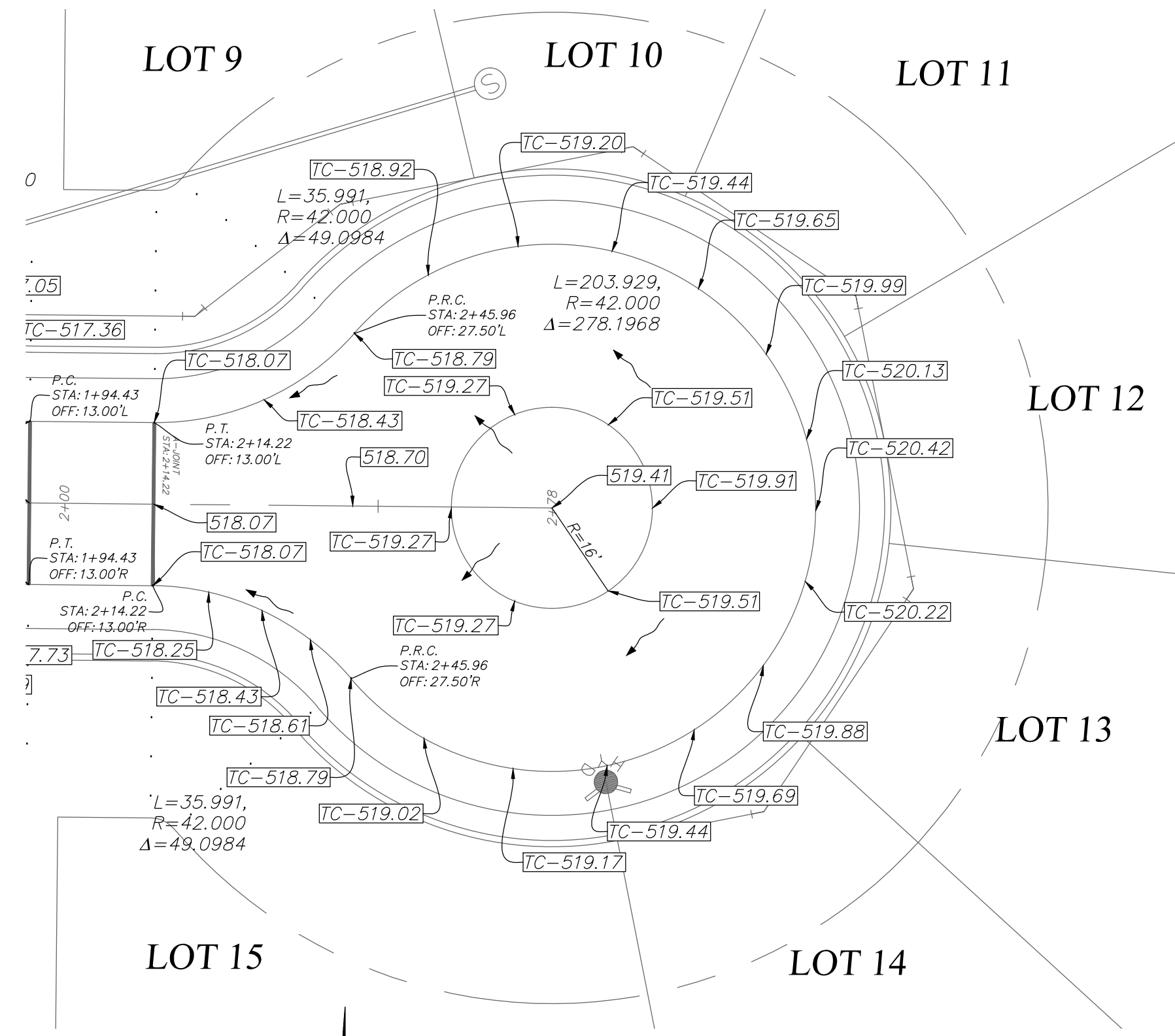


WEST CANNON SPUR COURT
SCALE 1" = 20'

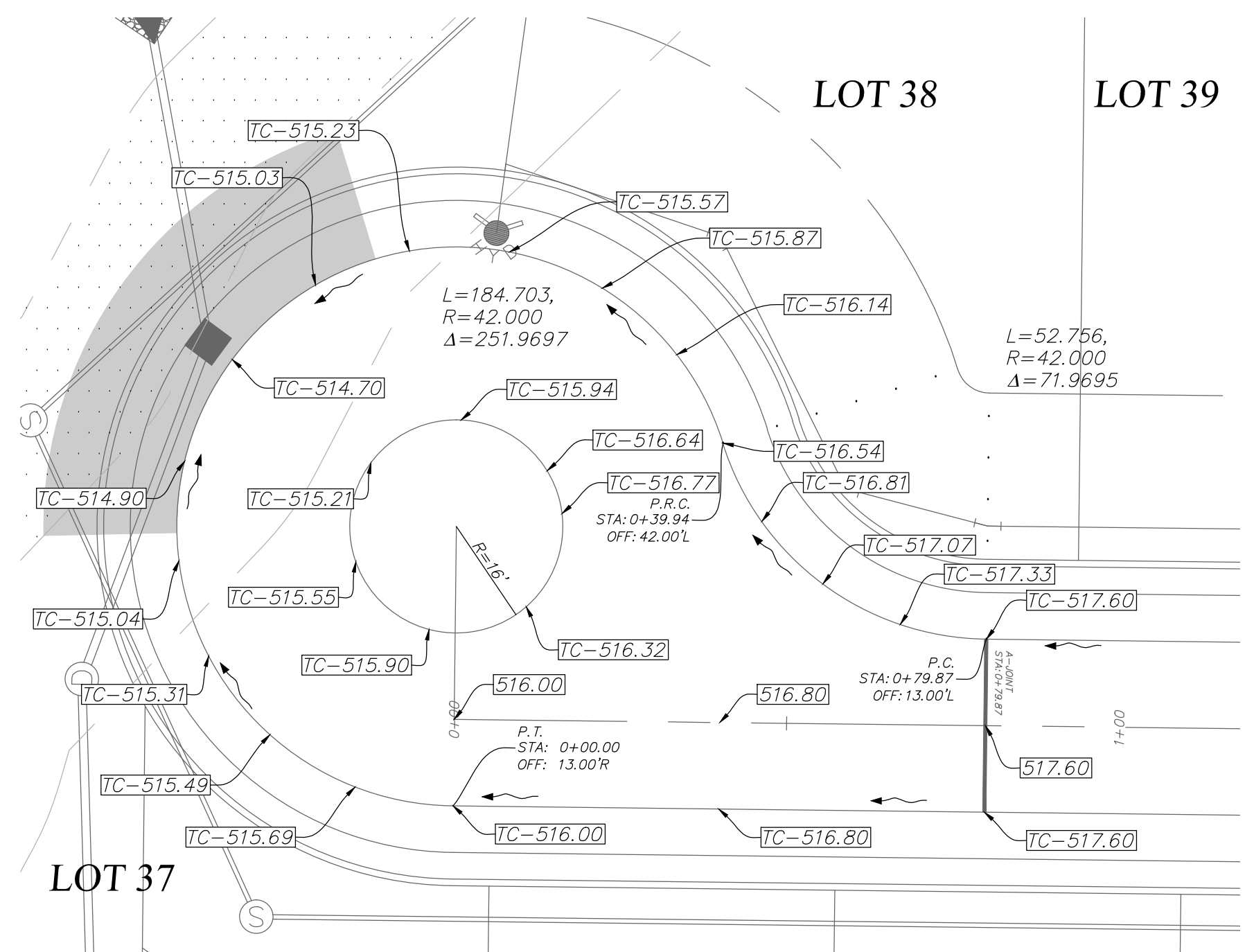
WARPING NOTES:
1. ALL SPOTS LABELED AS TC ARE TOP BACK OF CURB ELEVATIONS.
2. ALL OTHER SPOTS ARE PAVEMENT ELEVATIONS.
3. SPOT ELEVATIONS ARE SPACED APPROXIMATELY 15 FEET APART.
4. ALL CURBS ARE 3" (0.25') TALL.
→ DRAINAGE PATTERN



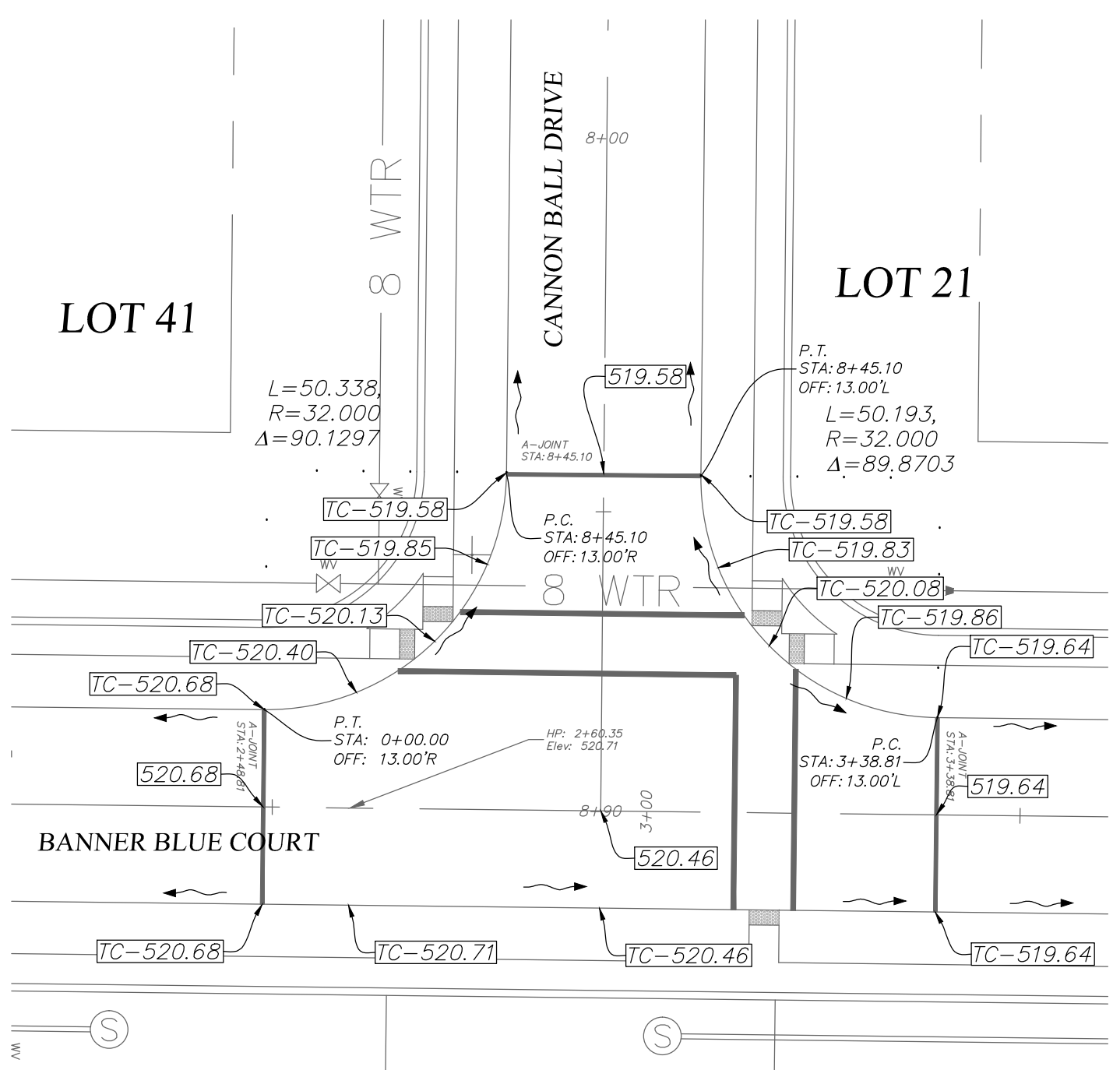
CANNON BALL DR AND
CANNON SPUR COURT
SCALE 1" = 20'



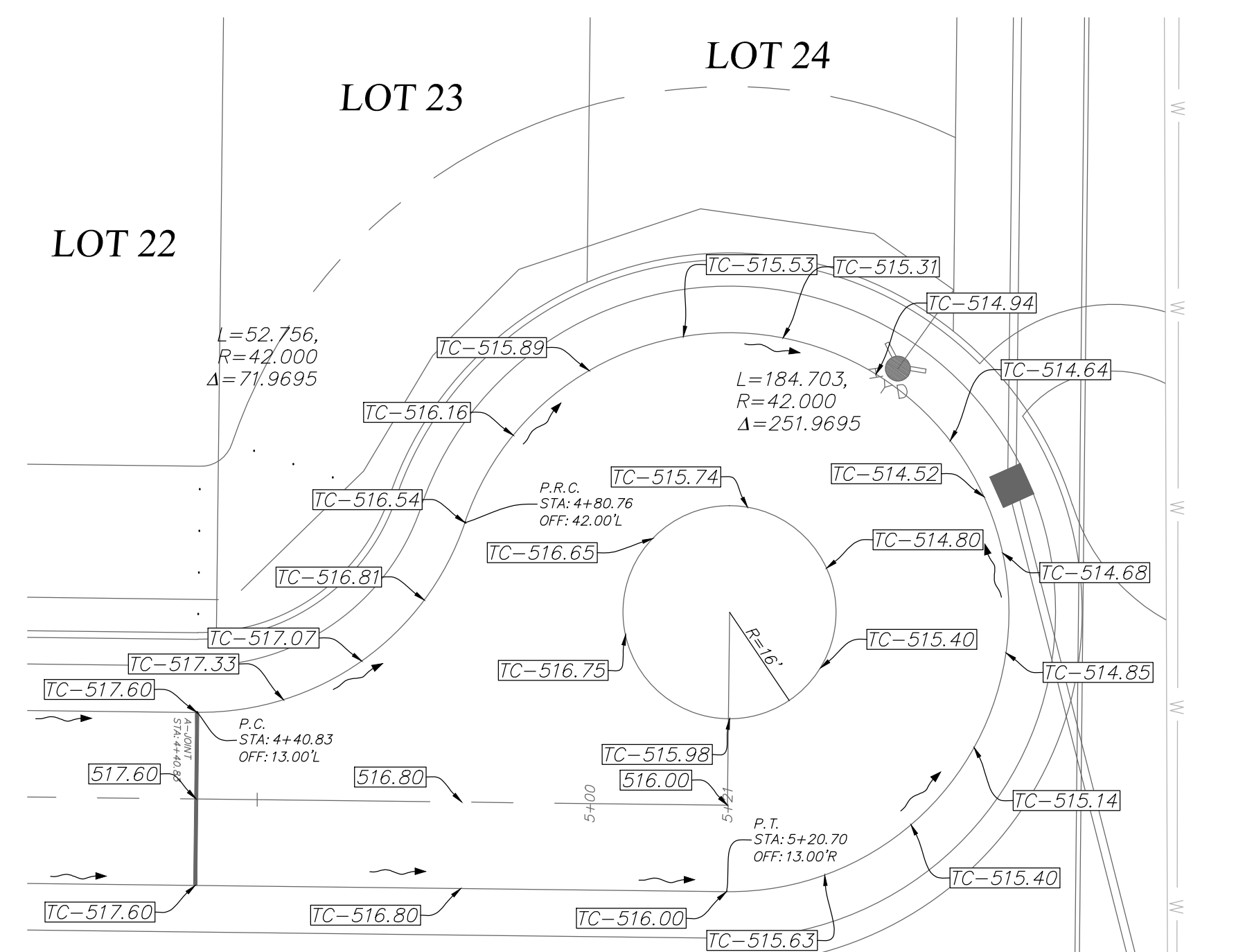
EAST CANNON SPUR COURT
SCALE 1" = 20'



WEST BANNER BLUE COURT
SCALE 1" = 20'



CANNON BALL DR AND
BANNER BLUE COURT
SCALE 1" = 20'



EAST BANNER BLUE COURT
SCALE 1" = 20'

PROJECT TITLE
IMPROVEMENT PLANS
WABASH WOODS
PHASE TWO
PAVEMENT WARPING
PFS No. 15014KAPD.00R
TASK 002

PICKETT, RAY & SILVER INC
CIVIL ENGINEERING, LAND SURVEYING,
AND NATURAL RESOURCES SERVICES
St. Peters
22 Richmond Center Court
St. Peters, MO 63776
Phone (636) 397-1211 Fax (636) 397-1104
www.prs.com 1-800-708-3918

ENGINEER'S AUTHENTICATION
THE RESPONSIBILITY FOR PROFESSIONAL ENGINEERING LIABILITY ON THIS PROJECT IS LIMITED TO THE SET OF PLANS AUTHENTICATED BY THE SEAL, SIGNATURE, AND DATE HEREON ATTACHED. RESPONSIBILITY IS DISCLAIMED FOR ALL OTHER ENGINEERING PLANS ISSUED IN THIS PROJECT AND SPECIFICALLY EXCLUDES REVISIONS AFTER THIS DATE UNLESS REAUTHENTICATED.
PICKETT, RAY & SILVER, INC. MO LICENSE #000336
Karl Anthony Schoenike
STATE OF MISSOURI
KARL ANTHONY SCHOENIKE
NUMBER
PE-2003015039
03/02/16
ELECTRONIC SEAL
KARL A. SCHOENIKE, P.E.
PROFESSIONAL ENGINEER LICENSE 2003015039

Developer / Owner Information
LK PROPERTIES II, LLLP
PO Box 340
St. Peters, Missouri 63776

P+Z No.
20100.04
City No. 15-639-SP

Page No.
PAVEMENT WARPING
08 of 24

*** O'FALLON FOR APPROVAL *** 03/02/16 ***