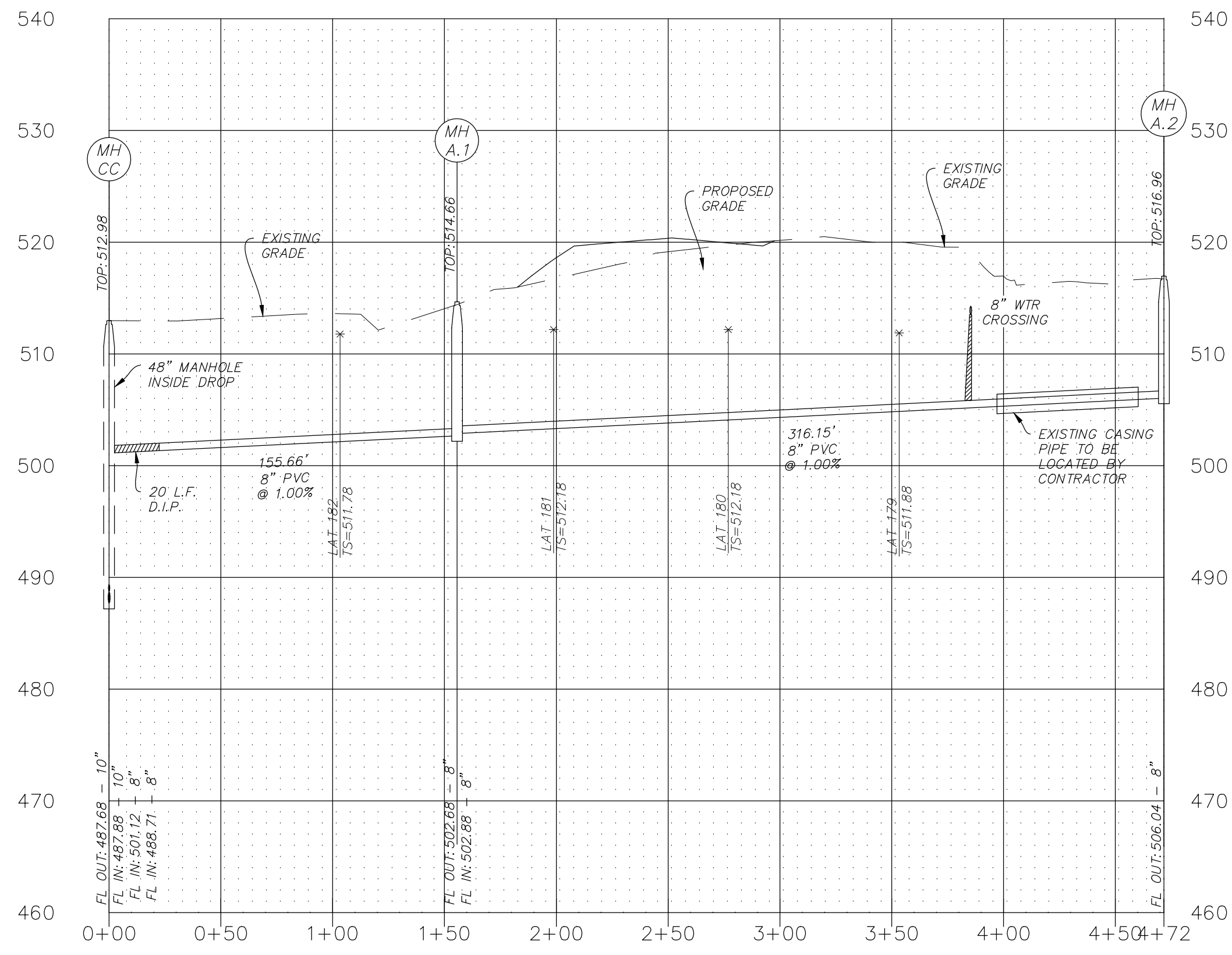
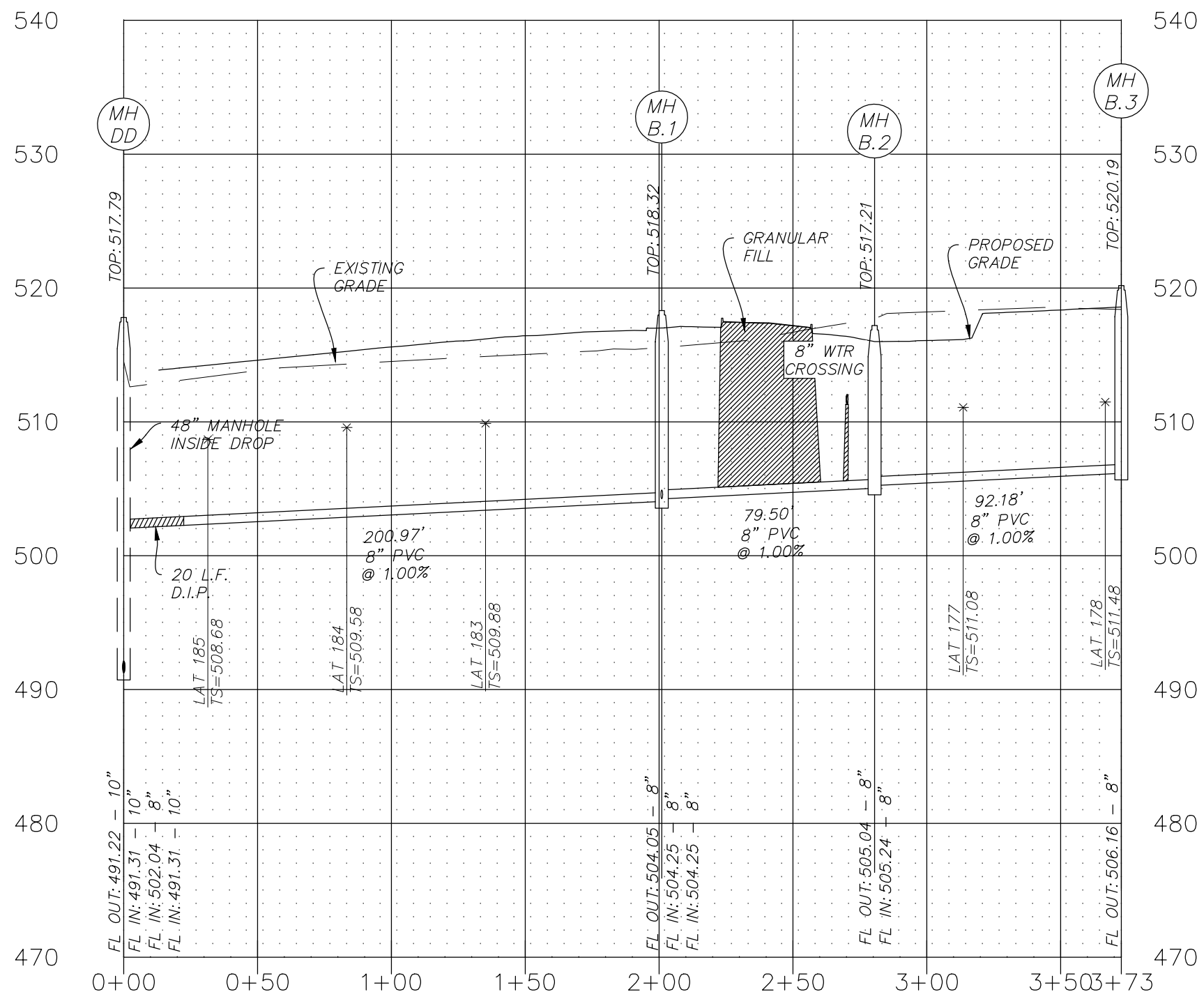


EX-SAN



SAN A



SAN B

NOTES:

- ALL SANITARY LATERAL AND SANITARY MAINS CROSSING UNDER PAVEMENT, IF TRENCHED, SHALL BE BACKFILLED WITH GRANULAR MATERIAL (AGGREGATE) AND COMPACTED.
- IF THE STORM AND SANITARY SEWERS ARE PARALLEL AND IN THE SAME TRENCH OR OVERDIG, THE UPPER SHALL BE PLACED ON A SHELF AND THE LOWER SHALL BE BEDDED IN COMPACTED GRANULAR FILL TO THE FLOW LINE OF THE UPPER.
- WHEN STORM SEWERS PIPES WHICH CROSS OVER EXISTING OR PROPOSED SANITARY SEWER OR WATER MAIN TRENCH, PROVIDE COMPACTED GRANULAR BACKFILL FROM THE TOP OF THE SANITARY SEWER OR WATER MAIN TO THE BOTTOM OF THE STORM SEWER AND CONSTRUCT CONCRETE CRADLE TO THE RCP STORM SEWER PIPE AND CONCRETE ENCASE HDPE STORM SEWER PIPE WHEN IT IS MORE THAN 18 INCHES ABOVE THE SANITARY SEWER ACROSS THE FULL WIDTH OF THE TRENCH. WHEN THE STORM SEWER IS LESS THAN 18" SEPARATION, BOTH PIPES ARE TO BE ENCASED IN CONCRETE. PROVIDE TWENTY (20) FEET OF DUCTILE IRON PIPE WHERE THE SANITARY SEWER CROSSES OVER THE STORM SEWER TRENCH.
- ALL NEW SANITARY LATERALS SHALL BE CONSTRUCTED WITH A MINIMUM TWO (2) PERCENT SLOPE.
- ONE FULL SECTION OF WATER PIPE SHALL BE CENTERED OVER THE TRENCH AT ALL WATER MAIN CROSSINGS.

SCALES:
HORIZONTAL: 1"= 50'
VERTICAL: 1"= 10'

PROJECT TITLE
IMPROVEMENT PLANS
WABASH WOODS
PHASE TWO
SANITARY PROFILES

PICKETT, RAY & SILVER INC
CIVIL ENGINEERING, LAND SURVEYING,
AND NATURAL RESOURCES SERVICES
St. Peters
22 Richmond Center Court
St. Peters, MO 63776
Phone (636) 397-1211 Fax (636) 397-1104
www.prs.com 1-800-708-3918

ENGINEER'S AUTHENTICATION
THE RESPONSIBILITY FOR PROFESSIONAL ENGINEERING LIABILITY ON THIS PROJECT IS LIMITED TO THE SET OF PLANS AUTHENTICATED BY THE SEAL, SIGNATURE, AND DATE HEREON ATTACHED. RESPONSIBILITY IS DISOLGATED FOR ALL OTHER ENGINEERING PLANS PROVIDED IN THIS PROJECT AND SPECIFICALLY EXCLUDES REVISIONS AFTER THIS DATE UNLESS REAUTHENTICATED.
PICKETT, RAY & SILVER, INC. MO
LICENSE #000336



KARL A. SCHOENIKE, P.E.
PROFESSIONAL ENGINEER LICENSE 2003015039

Developer / Owner Information
LK PROPERTIES II, LLLP
PO Box 340
St. Peters, Missouri 63776

P+Z No.
20100.04
City No. 15-639-SP

Page No.
SANITARY PROFILES
09 of 24

*** O'FALLON FOR APPROVAL *** 03/02/16 ***