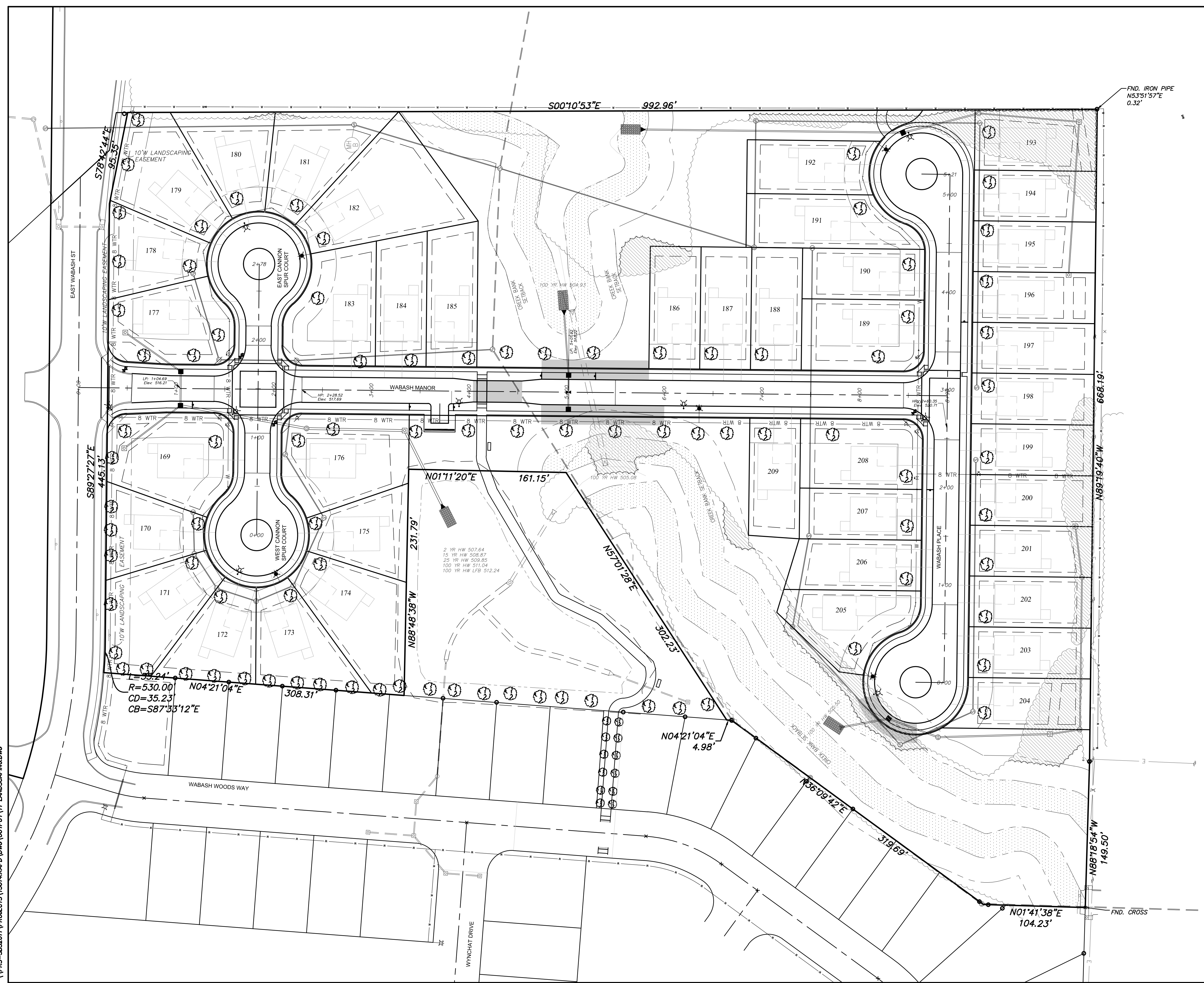


\\PRS-SBS2011\PROJECTS\15074.KAPD\DWG\OUT\TR\11 LANDSCAPING.DWG



STREET TREE NOTES:

- NO TREE IS TO BE PLANTED CLOSER THAN FIFTEEN (15') FEET OF BACK OF CURB OF STREET.
- NO TREE IS TO BE PLANTED WITHIN TWENTY-FIVE (25) FEET OF A STREET LIGHT.
- NO TREE SHALL BE PLANTED WITHIN TWENTY-FIVE (25) FEET OF A TRAFFIC CONTROL OR STREET SIGN.
- NO TREE IS TO BE PLANTED WITHIN FIVE (5') FEET OF AN UNDERGROUND UTILITY OR LATERAL LINE.
- NO TREE SHALL BE PLANTED WITHIN TEN (10') FEET OF A STORM WATER INLET OR MANHOLE.
- TREES ARE TO BE FROM TABLE 3 APPROVED LIST FROM THE CITY OF O'FALLON ORDINANCES SECTION 402.250.
- ALL TREES SHALL BE PLANTED IN ACCORDANCE WITH SECTION 402.130.
- TREES SHALL NOT BE PLANTED WITHIN EASEMENTS.

☼ = APPROXIMATE LOCATION OF STREET TREE. EXACT LOCATION TO BE DETERMINED IN FIELD.

STREET TREE SETBACK FROM OVERHEAD POWER LINES.

MAXIMUM MATURE TREE HEIGHT (FT)	MINIMUM DISTANCE FROM CENTERLINE (FT)
<15	NO MINIMUM
15-24	15
25-45	35
>45	45

STREET TREE SETBACK FROM SIDEWALKS

MAXIMUM MATURE TREE HEIGHT (FT)	MINIMUM DISTANCE FROM SIDEWALK (FT)
<15	5
15-25	15
26-45	15
>45	20

APPROVED TREE LIST

Common Name	Scientific Name	Description
Amur Corktree	Phellodendron amurense	45 feet
Arborvitae "Green Giant"	Thuja (standishii x plicata) "Green Giant"	45 feet
Austrian Pine	Pinus nigra	Taller than 45 feet
Baldcypress	Taxodium distichum	Taller than 45 feet
Birch "Dura Heat"	Betula nigra	Taller than 45 feet
Birch, River	Betula nigra	25 feet
Blackgum	Nyssa sylvatica	45 feet
Coffeetree, Kentucky	Gymnocladus dioica	Taller than 45 feet
Colorado Spruce	Picea pungens	Taller than 45 feet
Corneliancherry Dogwood	Cornus mas	15 feet
Crabapple, Flowering	Malus species	25 feet
Dogwood, Flowering	Cornus florida	15 feet
Eastern Red Cedar	Juniperus virginiana	25 feet
Eastern White Pine	Pinus strobus	Taller than 45 feet
Fringetree	Chionanthus virginicus	15 feet
Ginkgo	Ginkgo biloba	Taller than 45 feet
Goldenrain Tree	Koeleruteria paniculata	25 feet
Hackberry	Celtis occidentalis	Taller than 45 feet
Hawthorn, Green	Crataegus viridis	25 feet
Hawthorn, Washington	Crataegus phaenopynum	25 feet
Honeylocust	Gleditsia tricanthos	Taller than 45 feet
Hophornbeam	Ostrya virginiana	45 feet
Hornbeam American	Carpinus caroliniana	45 feet
Hornbeam, European	Carpinus betulus	45 feet
Japanese Tree Lilac	Syringa reticulata	15 feet
Linden "Redmond"	Tilia americana	Taller than 45 feet
Linden, American (Basswood)	Tilia americana	Taller than 45 feet
Linden, Littleleaf	Tilia cordata	45 feet
Linden, Silver	Tilia tomentosa	Taller than 45 feet
London Planetree	Platanus x acerifolia	Taller than 45 feet
Magnolia, Saucer	Magnolia x soulangeana	25 feet
Magnolia, Sweetbay	Magnolia virginiana	15 feet
Maple "Autumn Blaze"	Acer x freemanii	Taller than 45 feet
Maple "Autumn Fantasy"	Acer x freemanii	Taller than 45 feet
Maple "Jeffers Red"	Acer x freemanii	Taller than 45 feet
Maple "Sienna Glen"	Acer x freemanii	Taller than 45 feet
Maple, Amur	Acer ginnala	15 feet
Maple, Black	Acer nigrum	Taller than 45 feet
Maple, Hedge	Acer campestre	25 feet
Maple, Red	Acer rubrum	45 feet
Maple, Sugar	Acer saccharum	45 feet
Maple, Trident	Acer buergerianum	45 feet
Northern Catalpa	Catalpa speciosa	Taller than 45 feet
Norway Spruce	Picea abies	Taller than 45 feet
Oak, Bur	Quercus macrocarpa	Taller than 45 feet
Oak, English	Quercus robur	Taller than 45 feet
Oak, Northern Red	Quercus rubra	Taller than 45 feet
Oak, Pin	Quercus palustris	Taller than 45 feet
Oak, Shingle	Quercus imbricaria	Taller than 45 feet

☒ TREE REMOVAL AREA

City of O'Fallon Standard Subdivision Notes and Details - June 2010

PROJECT TITLE
IMPROVEMENT PLANS
WABASH WOODS
PHASE TWO
LANDSCAPING PLANS

PICKETT, RAY & SILVER INC
 CIVIL ENGINEERING, LAND SURVEYING,
 AND NATURAL RESOURCES SERVICES

St. Peters, Missouri 63376
 22 Richmond Center Court
 St. Peters, MO 63376
 Phone (636) 397-1211 Fax (636) 397-1104
 www.prsinc.com 1-800-708-3918

ENGINEER'S AUTHENTICATION
 THE RESPONSIBILITY FOR PROFESSIONAL ENGINEERING LIABILITY ON THIS PROJECT IS LIMITED TO THE SET OF PLANS AUTHENTICATED BY THE SEAL, SIGNATURE, AND DATE HEREON ATTACHED. RESPONSIBILITY IS DISCLAIMED FOR ALL OTHER ENGINEERING PLANS INCORPORATED IN THIS PROJECT AND SPECIFICALLY EXCLUDES REVISIONS AFTER THIS DATE UNLESS REAUTHENTICATED.

PICKETT, RAY & SILVER, INC. MO LICENSE #000026

KARL A. SCHOENKE, P.E.
 PROFESSIONAL ENGINEER LICENSE 2003015039

STATE OF MISSOURI
KARL ANTHONY SCHOENKE
 NUMBER
 PE-2003015039
 PROFESSIONAL ENGINEER

05/02/16
 ELECTRONIC SEAL

Developer / Owner Information
LK PROPERTIES II, LLLP
 PO Box 340
 St. Peters, Missouri 63376

P+Z No.
 20100.04
City No. 15-639-SP

Page No.
 15 of 24
 LANDSCAPING PLANS

*** O'FALLON FOR APPROVAL *** 03/02/16 ***