

NOTES:
1. FOUNDATION: WHERE THE TRENCH BOTTOM IS UNSTABLE, THE CONTRACTOR SHALL EXCAVATE TO A DEPTH REQUIRED BY THE ENGINEER AND REPLACE WITH A FOUNDATION OF CLASS I OR II MATERIAL AS DEFINED IN ASTM D2321, "STANDARD PRACTICE FOR INSTALLATION OF THERMOPLASTIC PIPE FOR SEWERS AND OTHER GRAVITY-FLOW APPLICATIONS," LATEST EDITION; AS AN ALTERNATIVE AND AT THE DISCRETION OF THE ENGINEER, THE TRENCH BOTTOM MAY BE STABILIZED USING A WOVEN GEOTEXTILE FABRIC.
2. BEDDING: SUITABLE MATERIAL SHALL BE CLASS I, II OR III AND INSTALLED AS REQUIRED IN ASTM D2321, LATEST EDITION. UNLESS OTHERWISE SPECIFIED BY THE ENGINEER, MINIMUM BEDDING THICKNESS SHALL BE 4" (100mm) FOR 4"-24" (100-600mm) AND 42"-48" (1050-1200mm) CORRUGATED POLYETHYLENE PIPE (CPEP); 6" (150mm) FOR 30"-36" (750-900mm) CPEP.
3. HAUNCHING AND INITIAL BACKFILL: SUITABLE MATERIAL SHALL BE CLASS I, II OR III AND INSTALLED AS REQUIRED IN ASTM D2321, LATEST EDITION.
4. UNLESS OTHERWISE SPECIFIED BY THE ENGINEER, MINIMUM TRENCH WIDTHS SHALL BE AS FOLLOWS:

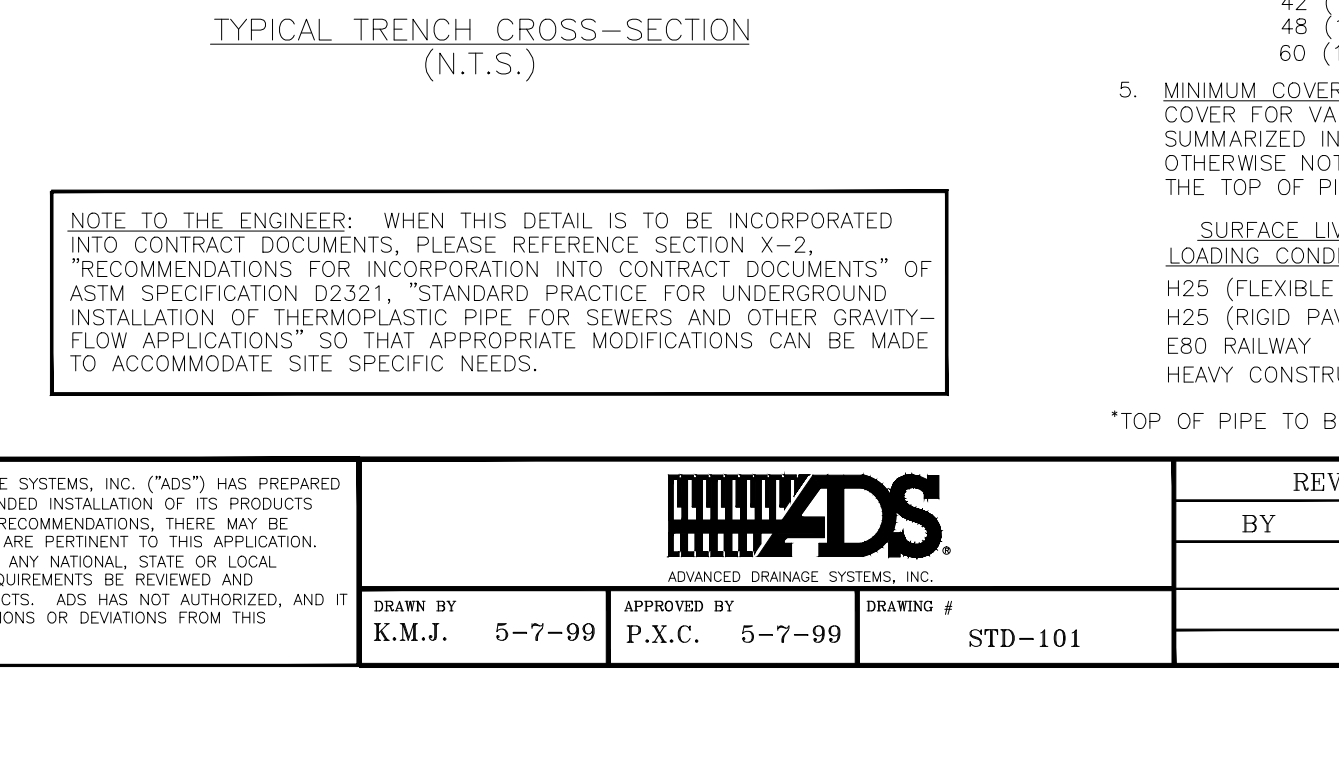
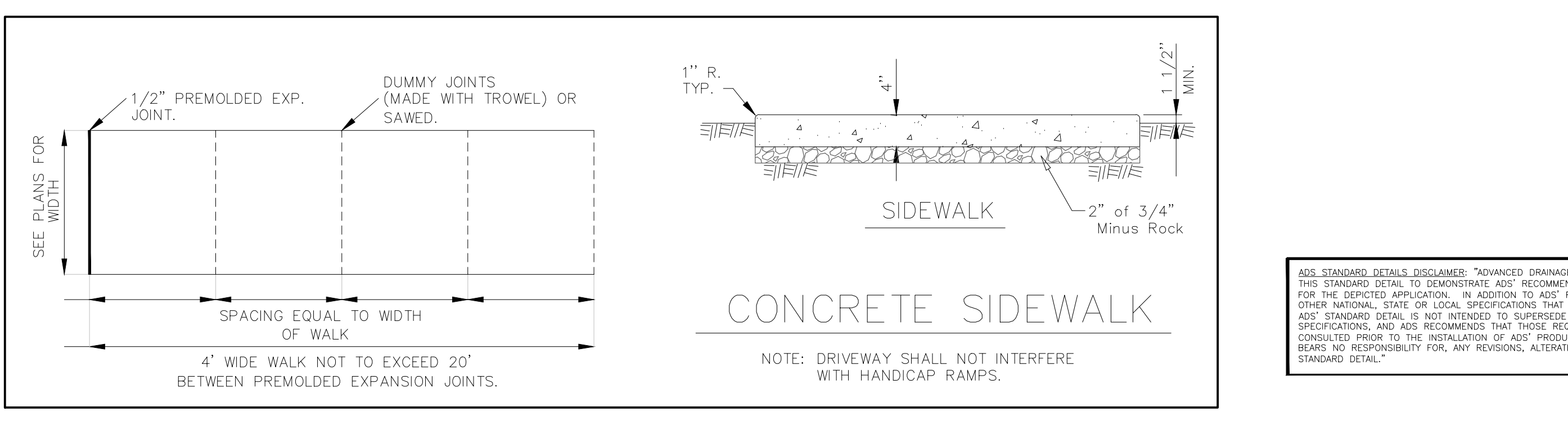
NOMINAL ϕ in (mm)	MIN. RECOMMENDED TRENCH WIDTH in (mm)
4 (100)	21 (530)
6 (150)	23 (580)
8 (200)	25 (630)
10 (250)	28 (710)
12 (300)	31 (790)
15 (375)	34 (860)
18 (450)	39 (990)
24 (600)	48 (1220)
30 (750)	66 (1680)
36 (900)	78 (1980)
42 (1050)	83 (2110)
48 (1200)	89 (2260)
60 (1500)	102 (2590)

5. MINIMUM COVER: MINIMUM RECOMMENDED DEPTHS OF COVER FOR VARIOUS LIVE LOADING CONDITIONS ARE SUMMARIZED IN THE FOLLOWING TABLE. UNLESS OTHERWISE NOTED, ALL DIMENSIONS ARE TAKEN FROM THE TOP OF PIPE TO THE GROUND SURFACE.

SURFACE LIVE LOADING CONDITION	MINIMUM RECOMMENDED COVER in (mm)
H25 (FLEXIBLE PAVEMENT)	12 (300)*
H25 (RIGID PAVEMENT)	12 (300)
E80 RAILWAY	24 (610)
HEAVY CONSTRUCTION	48 (1220)

*TOP OF PIPE TO BOTTOM OF BITUMINOUS PAVEMENT SECTION

*** SEE SHEET 21 ***
FOR STORM STRUCTURE LID DETAIL



REVISIONS

BY	DATE

* All other Storm or Sanitary Sewer Details will be by M.S.D. 2007 Standards and Specifications.

\\PFS-SBS2011\PROJECTS\15074.KAPD\DWG\OUT\PUT\13 DETAILS.DWG

PROJECT TITLE
IMPROVEMENT PLANS
WABASH WOODS
PHASE TWO
DETAILS

PICKET, RAY & SILVER INC
CIVIL ENGINEERING, LAND SURVEYING,
AND NATURAL RESOURCES SERVICES
St. Peters, Missouri 63376
22 Richmond Center Court
St. Peters, MO 63376
Phone (636) 397-1211 Fax (636) 397-1104
www.prs.com 1-800-708-3918

ENGINEER'S AUTHENTICATION
THE RESPONSIBILITY FOR PROFESSIONAL ENGINEERING LIABILITY ON THIS PROJECT IS HEREBY LIMITED TO THE SET OF PLANS AUTHENTICATED BY THE SEAL, SIGNATURE, AND DATE HEREON ATTACHED. RESPONSIBILITY IS DISCLAIMED FOR ALL OTHER ENGINEERING PLANS INVOLVED IN THIS PROJECT AND SPECIFICALLY EXCLUDES REVISIONS AFTER THIS DATE UNLESS REAUTHENTICATED.
PICKET, RAY & SILVER, INC. MO LICENSE #000336
KARL A. SCHOENIKE
STATE OF MISSOURI
PROFESSIONAL ENGINEER
NUMBER PC-2003015039
05/02/16
ELECTRONIC SEAL
KARL A. SCHOENIKE, P.E.
PROFESSIONAL ENGINEER LICENSE 2003015039

Developer / Owner Information
LK PROPERTIES II, LLLP
PO Box 340
St. Peters, Missouri 63376

P+Z No. 20100.04
City No. 15-639-SP
Page No. 19 of 24
DETAILS