

LEGEND

O.D. - NOMINAL PIPE SIZE
 O.D. - OUTSIDE DIAMETER OF PIPE
 H - COVER ABOVE TOP OF PIPE
 A - EMBEDDED BELOW PIPE (SEE TABLE)

TABLE OF EMBEDDED DEPTHS BELOW PIPE		
O.D.	A MIN. SOIL	A MIN. ROCK
27" & SMALLER	3"	6"

CLASS B
 CLASS C
 CLASS D
 FLAT BOTTOM TRENCH WITH BELL HOLES AND HAND PLACED BEDDING

GRANULAR BEDDING SHALL BE CRUSHED ROCK OR PEA GRAVEL WITH NOT LESS THAN 80% PASSING 1/2" (80% PASSING 3/4" FOR 30" AND LARGER PIPE) AND NOT LESS THAN 80% RETAINED ON A #40 TO BE PLACED IN NOT MORE THAN 6" LAYERS AND COMPACTED BY SLICING WITH A SHOVEL OR VIBRATING.

COMPACTED BACK FILL SHALL BE FINELY DIVIDED JOB EXCAVATED MATERIAL FREE FROM DEBRIS, ORGANIC MATERIAL AND STONES, PLACED IN UNIFORM LAYERS NOT MORE THAN 6" THICK, COMPACTED TO 95% MAXIMUM DENSITY AS DETERMINED BY A.S.T.M. D698, OR GRADED AGGREGATE. GRANULAR BACK FILL MATERIAL MAY BE SUBSTITUTED FOR ALL OR PART OF COMPACTED BACK FILL.

TAMPED BACK FILL SHALL BE FINELY DIVIDED JOB EXCAVATED MATERIAL FREE FROM DEBRIS, ORGANIC MATERIAL, AND STONES, HAND PLACED IN UNIFORM LAYERS NOT MORE THAN 8" THICK AND TAMPED AROUND CONDUIT PIPE. GRANULAR BACK FILL MATERIAL MAY BE SUBSTITUTED FOR ALL OR PART OF TAMPED BACK FILL.

TRENCH BACK FILL SHALL BE AS REQUIRED IN THE "LAYING AND BACK FILL" SECTION OF THE DETAILED SPECIFICATIONS.

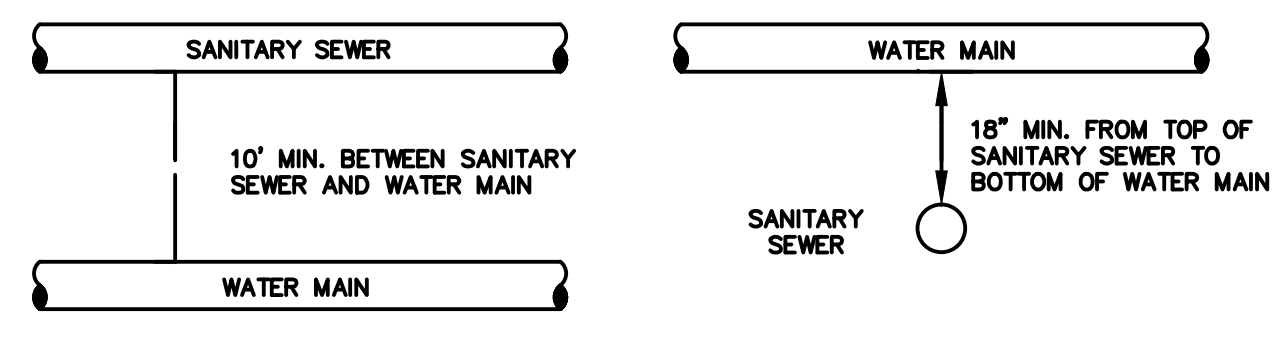
EMBEDDING THE TYPE OF EMBEDDING TO BE USED SHALL BE AS SPECIFIED IN THE PLANS AND SPECIFICATIONS.

TRACER WIRE REQUIRED ON ALL WATER MAINS

WATER MAIN EMBEDDED
 NOT TO SCALE

CITY OF O'FALLON
 ENGINEERING DEPARTMENT
 O'FALLON, MISSOURI

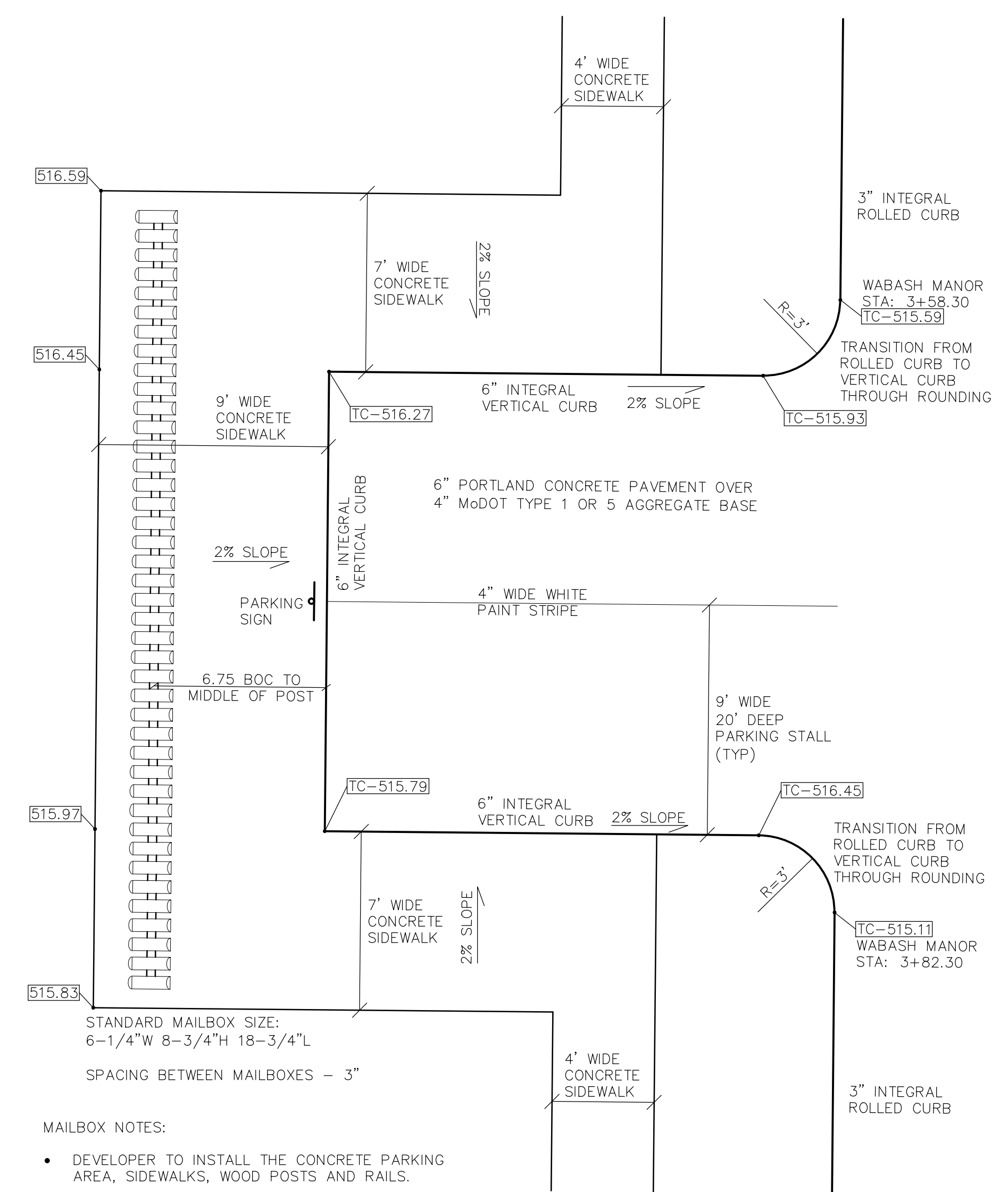
WATER MAIN EMBEDDED



TYPICAL WATER AND SEWER SEPARATION
 NOT TO SCALE

CITY OF O'FALLON
 ENGINEERING DEPARTMENT
 O'FALLON, MISSOURI

WATER AND SEWER SEPARATION DETAIL



- MAILBOX NOTES:**
- DEVELOPER TO INSTALL THE CONCRETE PARKING AREA, SIDEWALKS, WOOD POSTS AND RAILS.
 - MAILBOXES TO BE INSTALLED BY HOMEOWNER AS LOTS ARE SOLD.
 - MAILBOXES SHALL BE INSTALLED IN LOT ADDRESS ORDER, NOT IN THE ORDER THAT THE HOMES ARE BUILT.
 - LOCKING MAILBOXES ARE NOT ANTICIPATED AT THIS TIME. SHOULD THIS CHANGE IT WILL BE COORDINATED WITH THE USPS FOR ACCESS.

SCALE: 1" = 4'

PROJECT TITLE
 IMPROVEMENT PLANS
 WABASH WOODS
 PHASE TWO
 DETAILS

PPS No. 15014KAPD.00R
 TASK 002

PICKETT, RAY & SILVER, INC.
 CIVIL ENGINEERING, LAND SURVEYING,
 AND NATURAL RESOURCES SERVICES

St. Peters
 22 Richmond Center Court
 St. Peters, MO 63376
 Phone (636) 397-1211 Fax (636) 397-1104
 www.prsinc.com 1-800-708-3918

ENGINEER'S AUTHENTICATION
 THE RESPONSIBILITY FOR PROFESSIONAL ENGINEERING LIABILITY ON THIS PROJECT IS LIMITED TO THE SET OF PLANS AUTHENTICATED BY THE SEAL, SIGNATURE, AND DATE HEREON ATTACHED. RESPONSIBILITY IS DISCLAIMED FOR ALL OTHER ENGINEERING PLANS INCORPORATED IN THIS PROJECT AND SPECIFICALLY EXCLUDES REVISIONS AFTER THIS DATE UNLESS REAUTHENTICATED.

PICKETT, RAY & SILVER, INC. MO LICENSE #000035

KARL A. SCHOENIKE
 PROFESSIONAL ENGINEER
 LICENSE NUMBER
 PE-2003015039

03/02/16
 ELECTRONIC SEAL

KARL A. SCHOENIKE, P.E.
 PROFESSIONAL ENGINEER LICENSE 2003015039

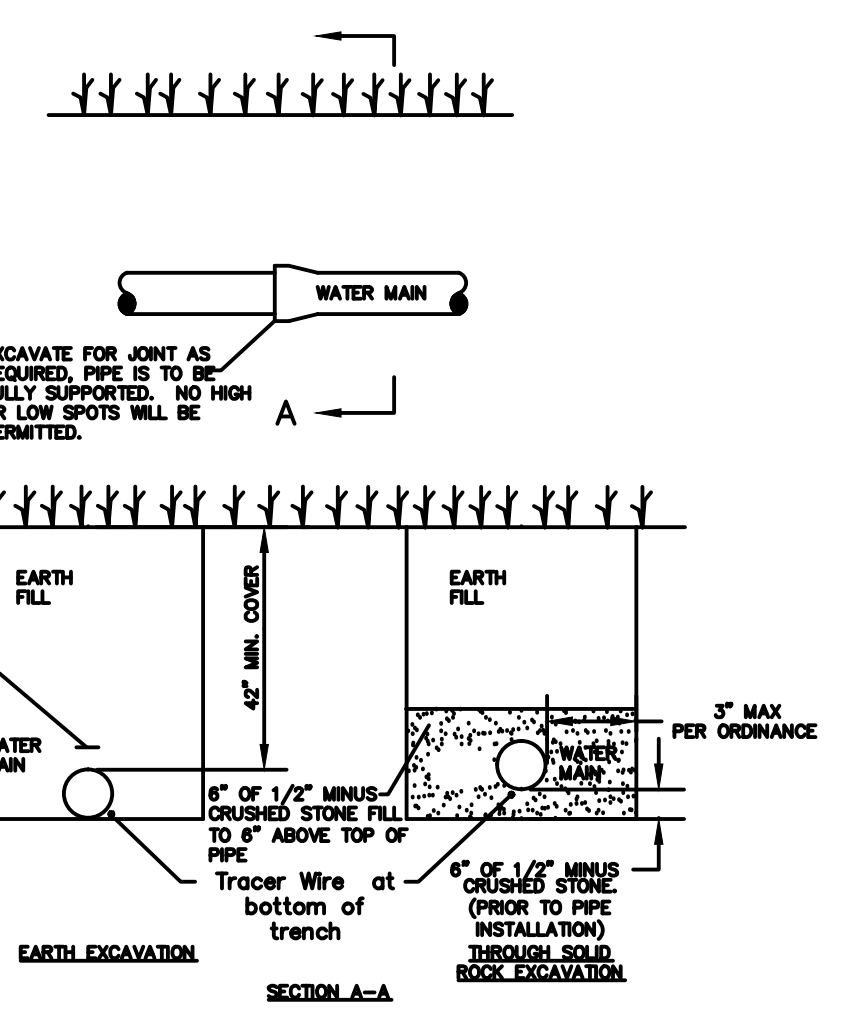
Developer / Owner Information

LK PROPERTIES II, LLLP
 PO Box 340
 St. Peters, Missouri 63376

P+Z No.
 20100.04

City No. 15-639-SF

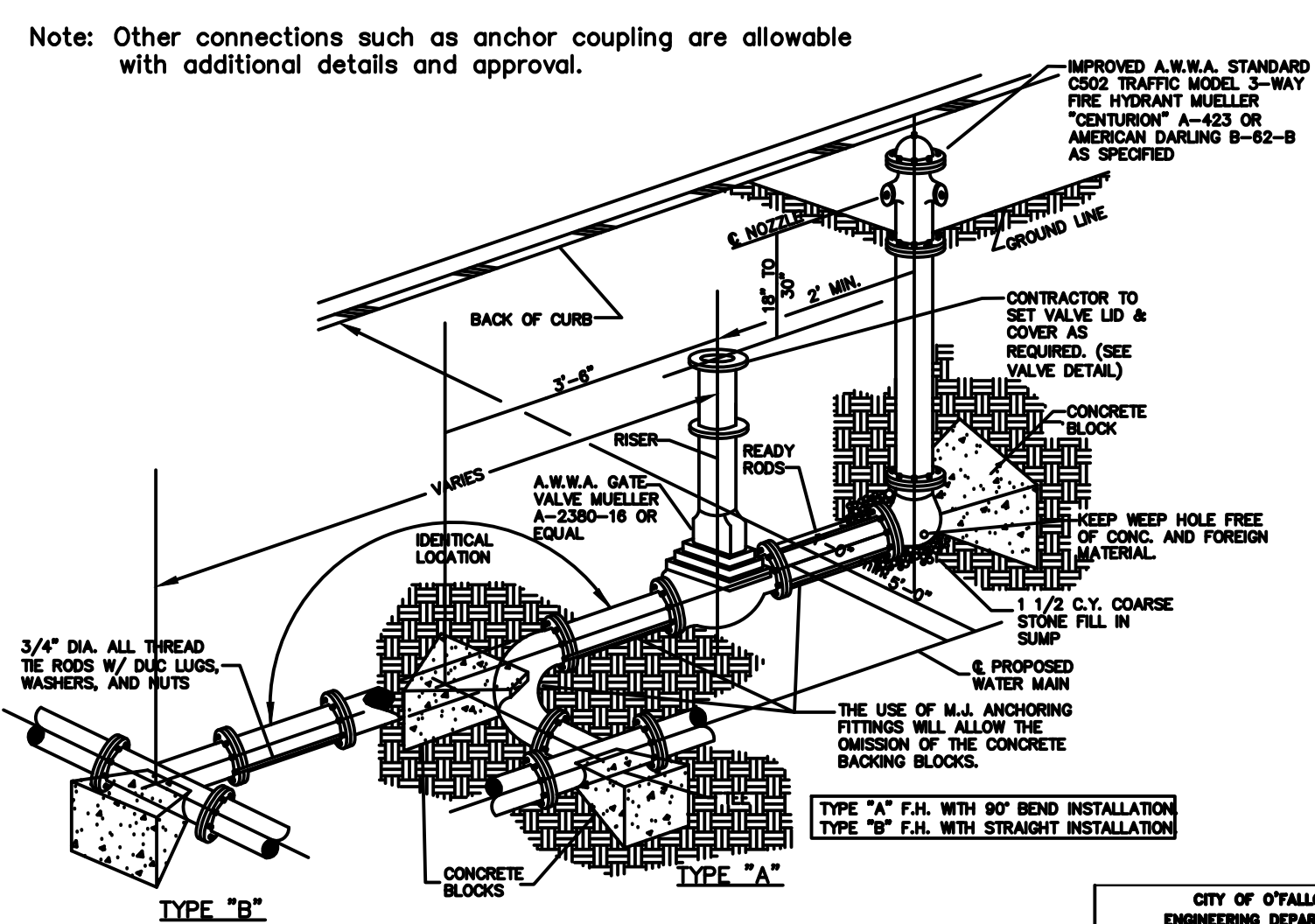
Page No.
 24 of 24
 DETAILS



TYPICAL WATER MAIN INSTALLATION DETAILS
 NOT TO SCALE

CITY OF O'FALLON
 ENGINEERING DEPARTMENT
 O'FALLON, MISSOURI

WATER MAIN INSTALLATION DETAIL



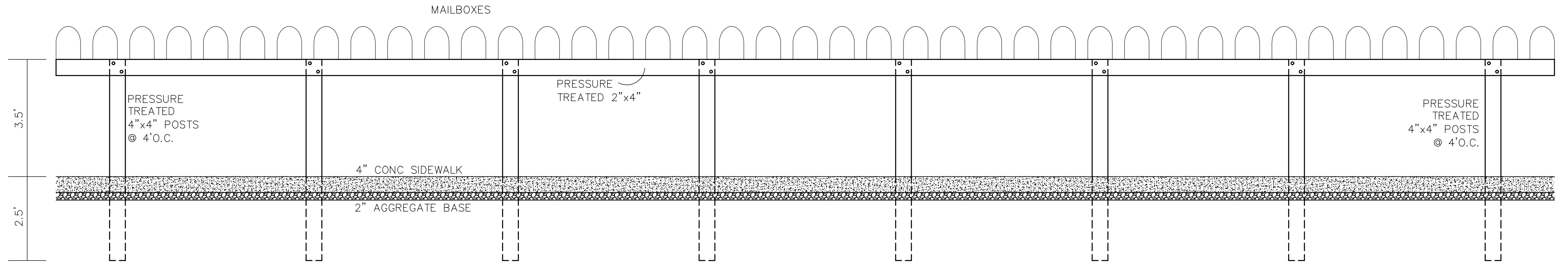
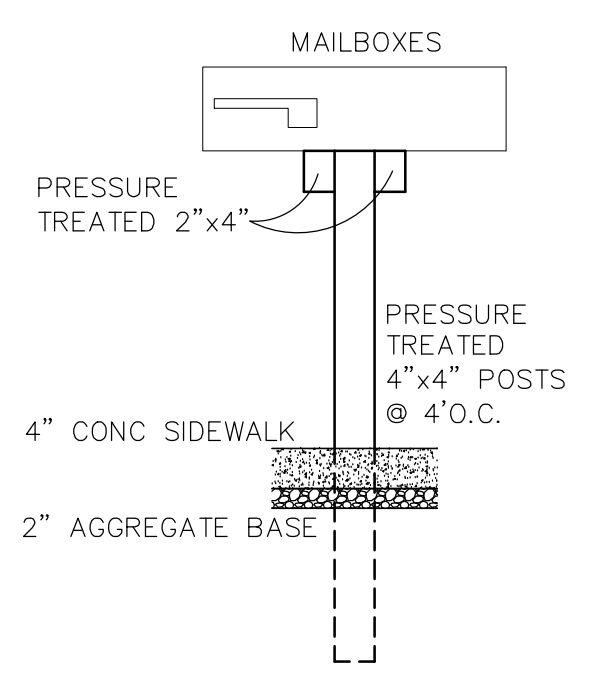
FIRE HYDRANT DETAIL
 NOT TO SCALE

CITY OF O'FALLON
 ENGINEERING DEPARTMENT
 O'FALLON, MISSOURI

FIRE HYDRANT DETAILS



PARKING SIGN
 (nts)



CENTRALIZED MAILBOXES DETAIL
 (nts)