

GENERAL NOTES

- 1. BOUNDARY AND TOPOGRAPHIC SURVEY BY STOCK AND ASSOCIATES.
2. LOT WILL BE CREATED WITH A RESUBDIVISION PLAT.
3. ALL UTILITIES SHOWN HAVE BEEN LOCATED BY THE ENGINEER FROM AVAILABLE RECORDS...

UTILITY CONTACTS

- WATER SERVICE - ST. CHARLES COUNTY WATER DISTRICT #2
P.O. BOX 967
OFFALON, MO 63366
PH. (314) 561-3737
FAX (314) 625-3712
CONTACT: JEFF BLECKMAN OR DAVE RENDLEMAN
TELEPHONE SERVICE - GTE TELEPHONE COMPANY
ENGINEERING
680 PARR ROAD
WENTZVILLE, MO 63385
PH. (314) 332-7823
FAX (314) 332-6711
CONTACT: GREG MARSH

WATER LINE NOTES

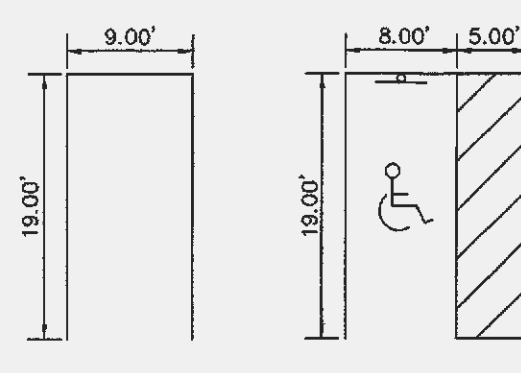
- 1. ALL MATERIALS AND METHODS OF CONSTRUCTION FOR WATER MAINS TO MEET REQUIREMENTS OF THE ST. CHARLES COUNTY PUBLIC WATER SUPPLY DISTRICT NO. 2
2. WATER MAINS SHALL BE POLY VINYL CHLORIDE (PVC) CLASS 200, SDR 21 PIPE CONFORMING TO A.S.T.M. SPECIFICATION D2241.
3. DUCTILE IRON PIPE MATERIALS AND CONSTRUCTION SHALL BE IN ACCORDANCE WITH ALL THE REQUIREMENTS OF U.S.A. STANDARD A2151 (A.W.W.A. C-51-65).

SANITARY SEWER NOTES

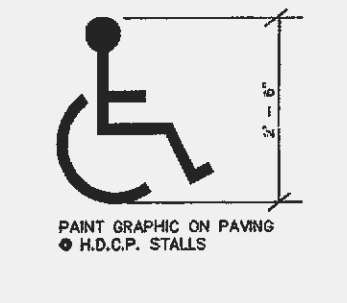
- 1. ALL MATERIALS AND METHODS OF CONSTRUCTION FOR SANITARY SEWERS TO MEET REQUIREMENTS OF THE CITY OF OFFALON, BILL NO. 1830, ORDINANCE NO. 1810
2. ALL MANHOLES SHALL BE 48" DIA. PRE-CAST CONCRETE PER ASTM C-478.
3. ALL LATERAL SEWER CONSTRUCTION METHODS TO CONFORM TO LATEST STANDARDS AND SPECIFICATIONS OF THE CITY OF OFFALON PLUMBING CODE.

SILTATION NOTES

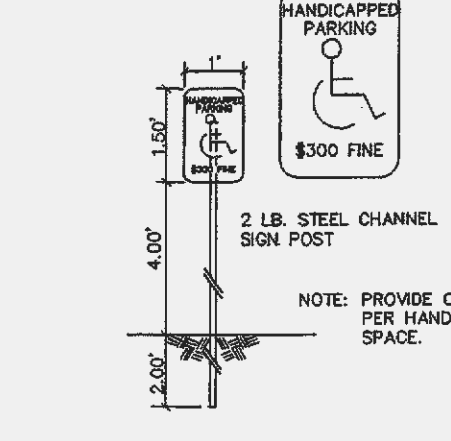
- 1. Inspection of siltation control devices shall take place once every seven days and within 24 hours of any 0.5"/24 hour rain event.
2. Any disturbed areas which will remain unworked for 45 days or more shall be stabilized with seeding and mulching per specifications within 7 days.
3. All slopes or drainage channels, once constructed to final grade, shall be seeded and mulched per specifications within seven (7) days.



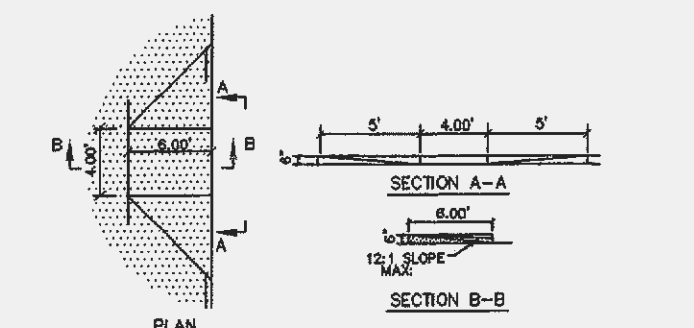
TYPICAL PARKING STALLS (n.t.s.)



HANDICAP SIGN (n.t.s.)



HANDICAP PARKING SIGN (n.t.s.)



HANDICAP RAMP DETAIL (n.t.s.)

EARTHWORK NOTES:

BULK CUT .18,023 ± CUBIC YARD
BULK FILL .2,118 (W/15% SHRINKAGE) ± CUBIC YARD
THE ENGINEER HAS CALCULATED THE ABOVE QUANTITIES OF EARTHWORK TO BE REGARDED AS AN ESTIMATE OF THE BULK MOVEMENT OR REDISTRIBUTION OF SOILS ON THIS PROJECT...

STORM SEWER NOTES

- 1. ALL CONCRETE SHALL BE REINFORCED, AND CONFORM TO A.S.T.M. DESIGNATION C78 CLASS III UNLESS NOTED.
2. ALL STORM SEWER STRUCTURES WITHIN PROJECT SITE TO BE CONSTRUCTED IN ACCORDANCE WITH THE CITY OF OFFALON STANDARD CONSTRUCTION SPECIFICATIONS.
3. TYPE "O" BEDDING IS REQUIRED FOR PIPES IN ROCK.

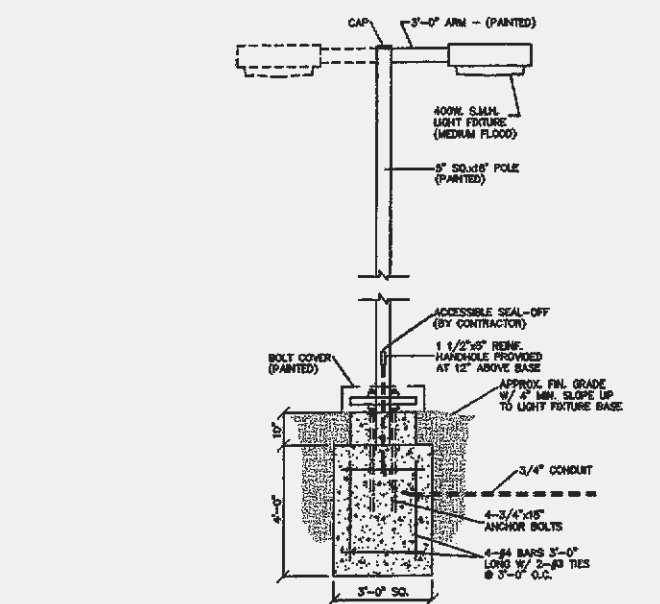
- 2. ALL ELEVATIONS ARE BASED ON U.S.G.S. DATUM.
3. BOUNDARY AND TOPOGRAPHIC SURVEY BY STOCK & ASSOCIATES.
4. ALL MATERIALS AND METHODS OF CONSTRUCTION TO MEET THE CURRENT STANDARDS AND SPECIFICATIONS AS REQUIRED BY THE CITY OF OFFALON.

- 5. ALL GRADED AREAS INDICATED SHALL BE PROTECTED FROM EROSION BY EROSION CONTROL DEVICES, SEEDING AND MULCHING AS INDICATED.
6. PRIOR TO BEGINNING ANY WORK ON THE SITE, THE CONTRACTOR SHALL CONTACT THE CONSTRUCTION MANAGER FOR SPECIFIC INSTRUCTIONS RELEVANT TO THE SEQUENCING OF WORK.

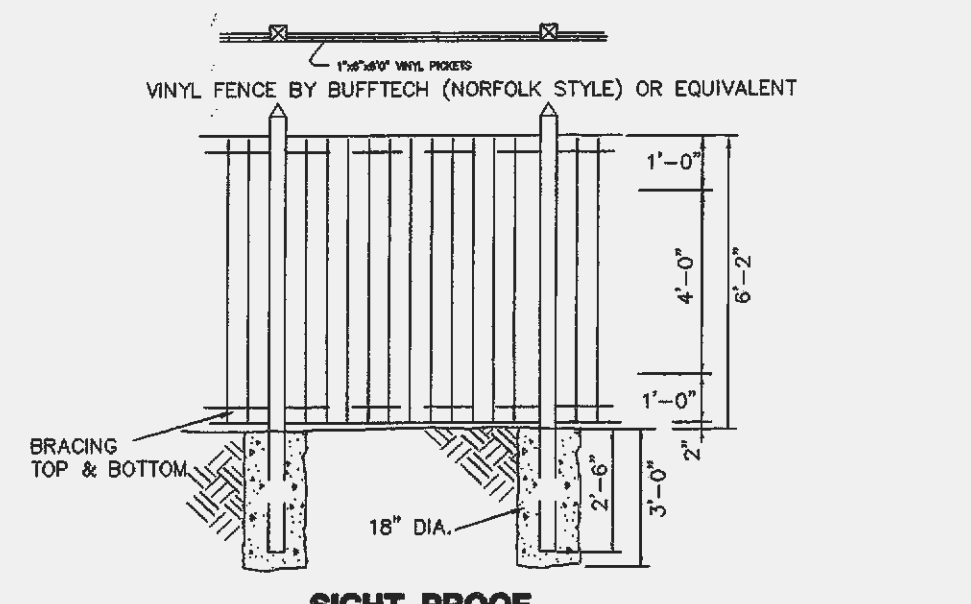
- 7. GRADING CONTRACTOR SHALL INSTALL SILTATION CONTROL PRIOR TO STARTING THE GRADING PER SILTATION SPECIFICATIONS. ADDITIONAL SILTATION CONTROL DEVICES MAY BE REQUIRED AS DIRECTED BY THE CITY OF OFFALON OR THE CONSTRUCTION MANAGER.
8. ALL FILLS AND BACKFILLS SHALL BE MADE OF SELECTED EARTH MATERIALS, FREE FROM BROKEN MASONRY, ROCK, FROZEN EARTH, RUBBISH, ORGANIC MATERIAL AND DEBRIS.

- 9. GRADING CONTRACTOR SHALL KEEP EXISTING ROADWAYS CLEAN OF MUD AND DEBRIS AT ALL TIMES.
10. PROPOSED CONTOURS SHOWN ARE FINISHED ELEVATIONS ON PAVED AREAS. CONTRACTOR TO GRADE ALL AREAS TO REQUIRED SUBGRADE.
11. NO GRADE SHALL EXCEED 3:1 SLOPE. (UNLESS OTHERWISE SPECIFICALLY NOTED)

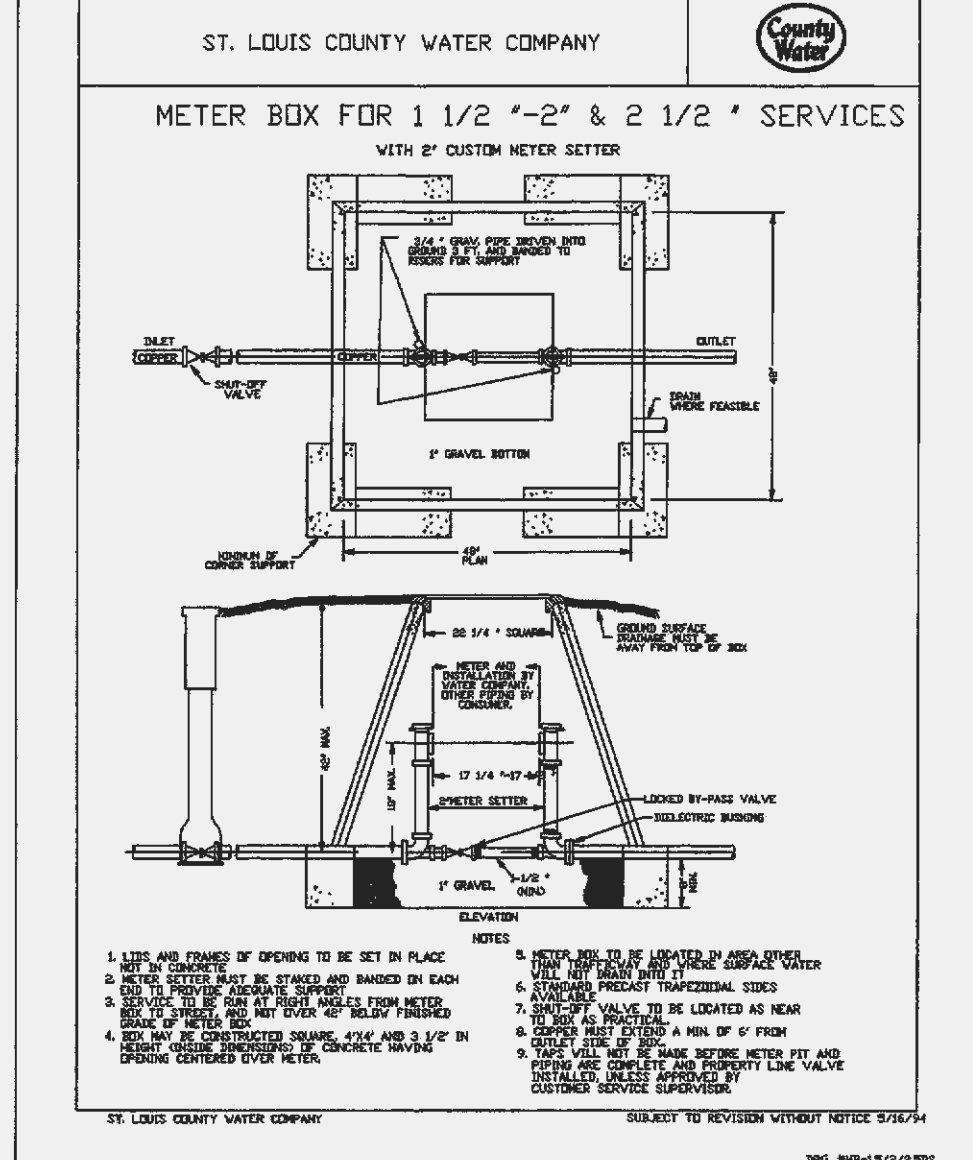
- 12. ALL FILL PLACED UNDER PROPOSED STORM AND SANITARY SEWER LINES AND/OR PAVED AREAS SHALL BE COMPACTED TO 90% OF MAXIMUM DENSITY AS DETERMINED BY THE MODIFIED AASHTO T-180 COMPACTION TEST OR 95% OF MAXIMUM DENSITY AS DETERMINED BY THE STANDARD PROCTOR TEST AASHTO T-99. ALL TEST SHALL BE VERIFIED BY A SOILS ENGINEER CONCURRENT WITH GRADING AND BACKFILLING OPERATIONS.



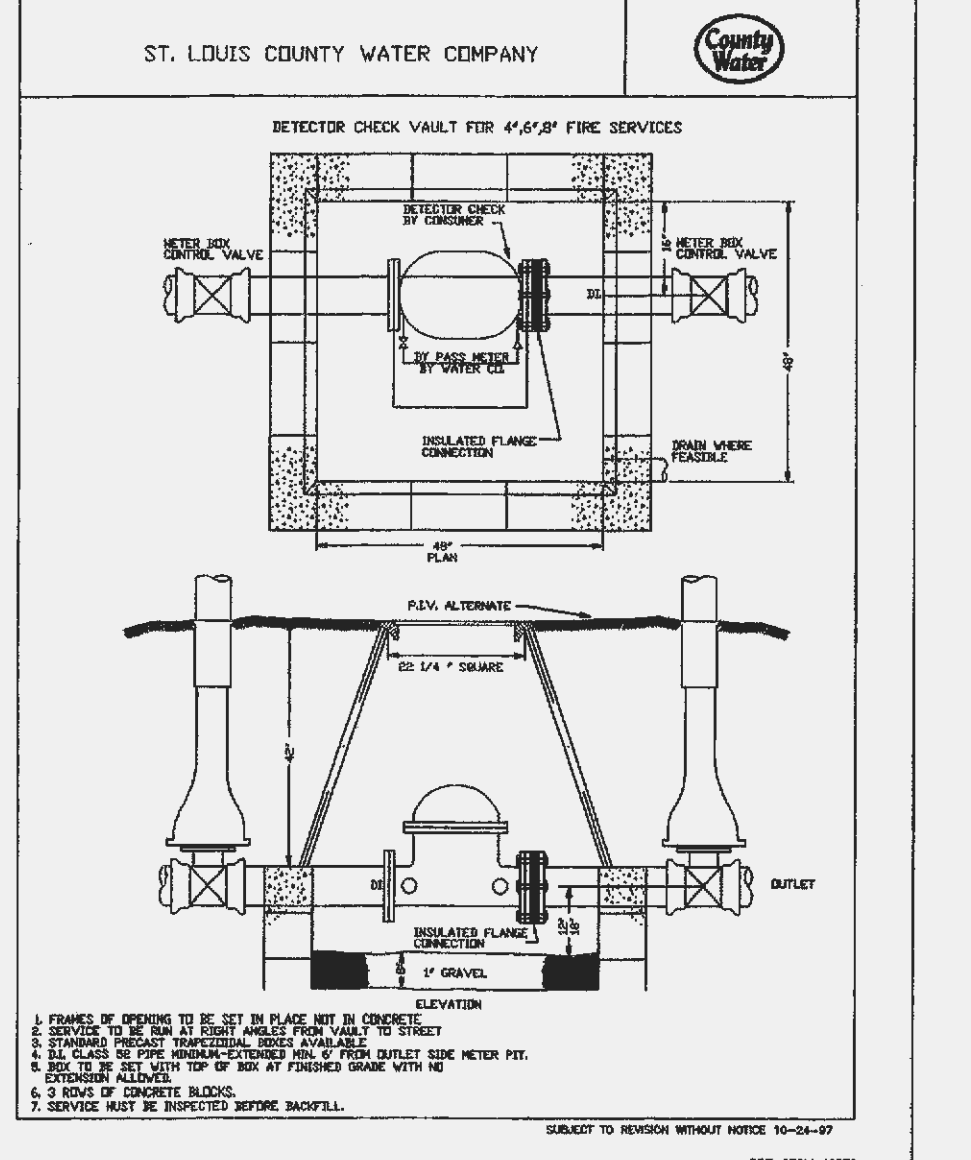
AREA LIGHT & POLE DETAIL (n.t.s.)



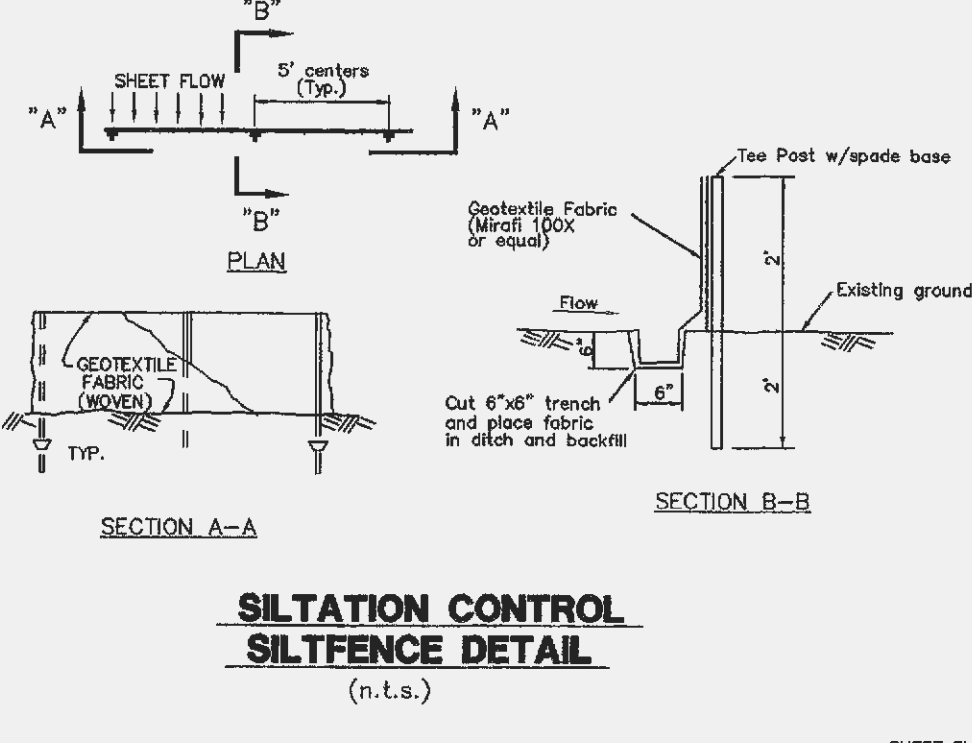
SIGHT PROOF VINYL FENCE DETAIL (n.t.s.) (AT TRASH ENCLOSURE)



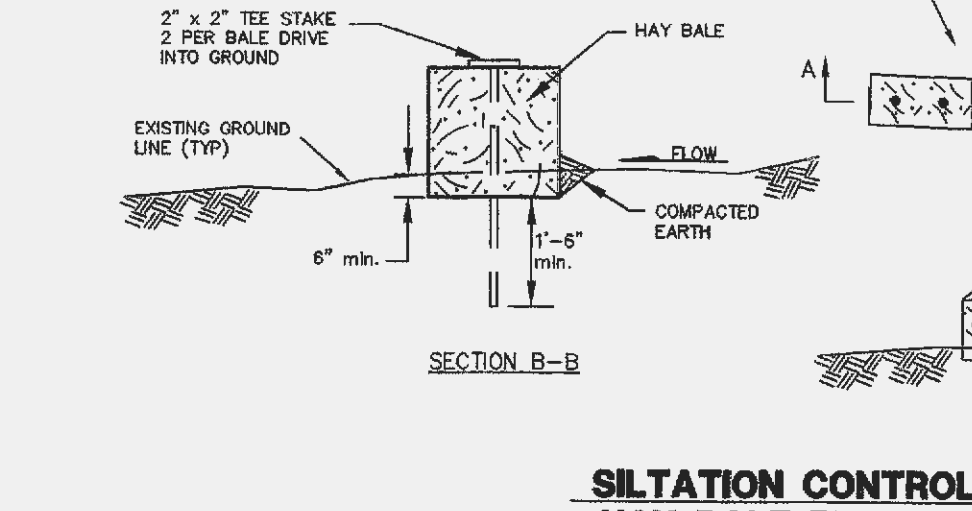
ST. LOUIS COUNTY WATER COMPANY METER BOX FOR 1 1/2 " 2" & 2 1/2 " SERVICES



ST. LOUIS COUNTY WATER COMPANY DETECTOR CHECK VALVE FOR 4" 6" 8" FIRE SERVICES



SILTATION CONTROL SILTFENCE DETAIL (n.t.s.)



SILTATION CONTROL HAY BALE DETAIL (n.t.s.)

- GENERAL NOTES:
1. Do not scale drawing. Follow Dimensions
2. Siltation Control Devices to remain in place until adequate vegetative growth insures no further erosion of the soil.
3. Siltation Fences shall be inspected periodically for damage and for the amount of sedimentation which has accumulated. Removal of sediment will be required when the level of deposition reaches 1/2 of the height of the siltation fence.

STOCK & ASSOCIATES CONSULTING ENGINEERS, INC. 425 NORTH NEW BALLAS ROAD SUITE 105 ST. LOUIS, MO 63141 PH. (314) 432-8100 FAX (314) 432-8171 e-mail: gstock@stockandco.com

PROJECT TYPE table with columns for DRAWINGS/SPECIFICATIONS BY, ALL CONSTRUCTION WORK, STORE, and BUILDING.

REVISIONS table with columns for NO., DATE, BY, DESCRIPTION, and CONST.

REVISIONS table with columns for NO., DATE, BY, DESCRIPTION, and CONST.

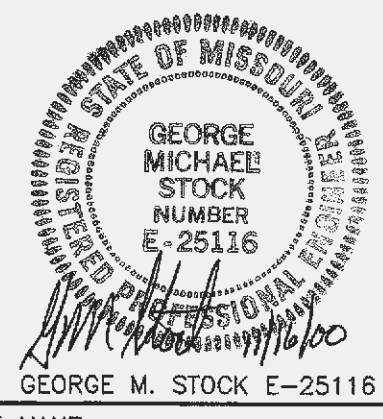
REVISIONS table with columns for NO., DATE, BY, DESCRIPTION, and CONST.

REVISIONS table with columns for NO., DATE, BY, DESCRIPTION, and CONST.

REVISIONS table with columns for NO., DATE, BY, DESCRIPTION, and CONST.

REVISIONS table with columns for NO., DATE, BY, DESCRIPTION, and CONST.

CERTIFICATION AND SEAL I HEREBY CERTIFY THAT THIS PLAN AND SPECIFICATION WAS PREPARED BY ME OR UNDER MY DIRECT SUPERVISION AND THAT I AM A DULY REGISTERED ENGINEER UNDER THE LAWS OF THE STATE OF MISSOURI AS SIGNIFIED BY MY HAND AND SEAL.



PROJECT INFORMATION table with columns for PROJECT NUMBER, DRAWN BY, REVIEWED BY, STORE NO., SCALE, DRAWING NO., and DATE.