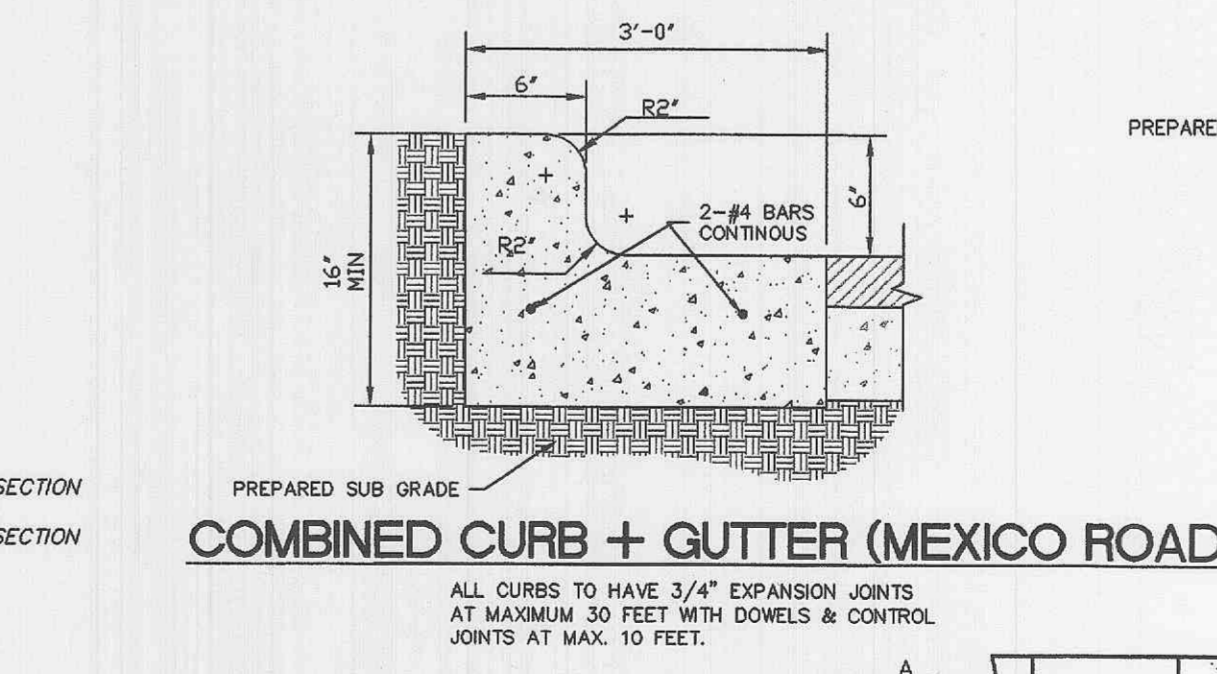
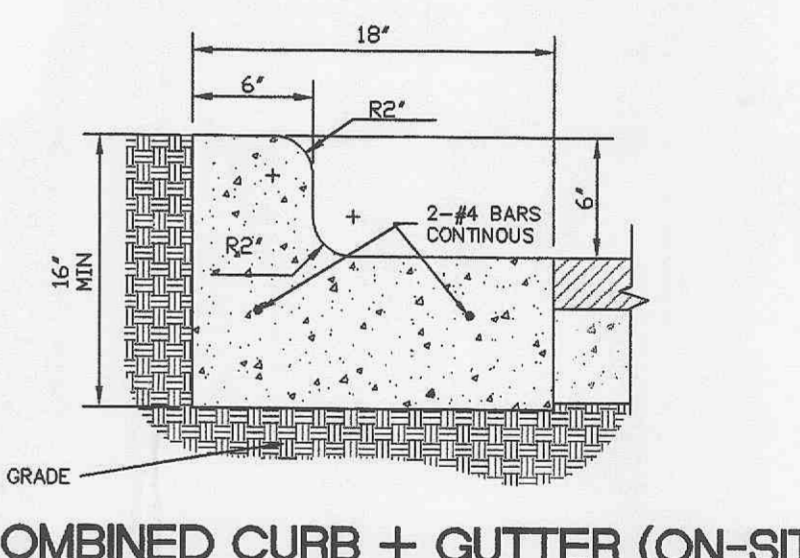
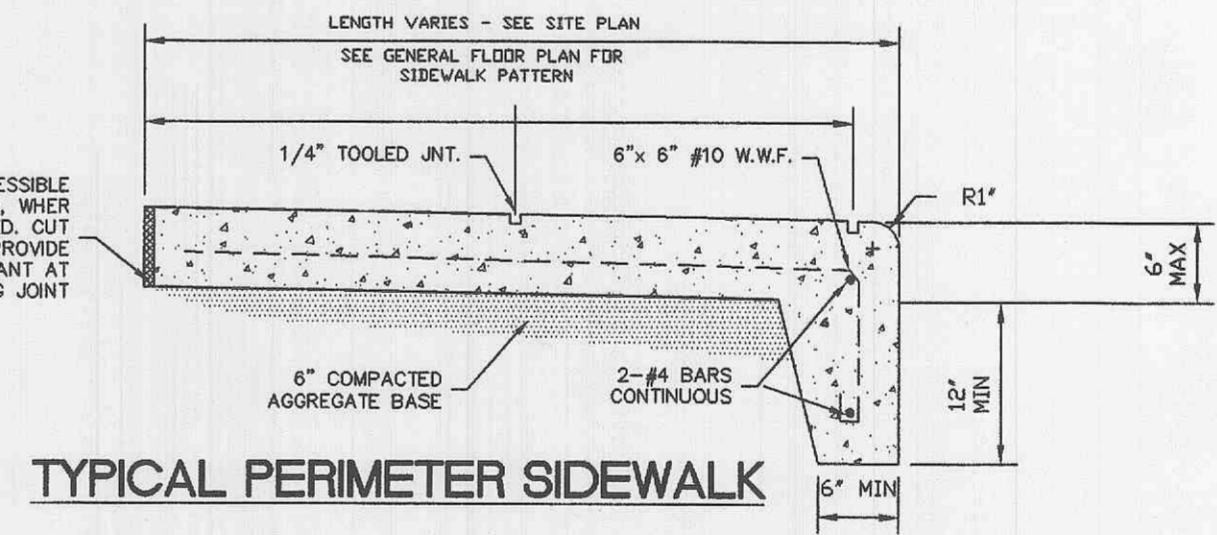
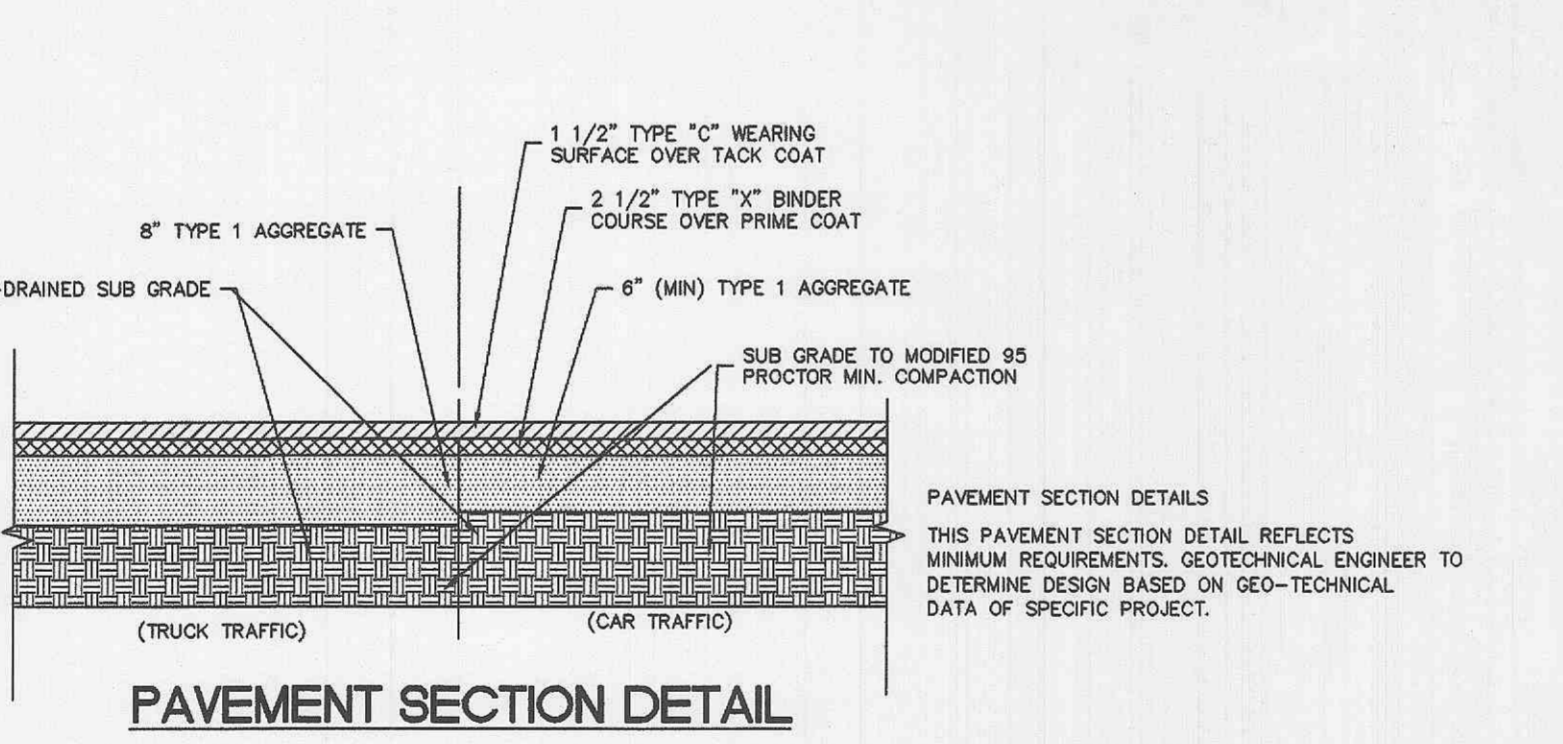
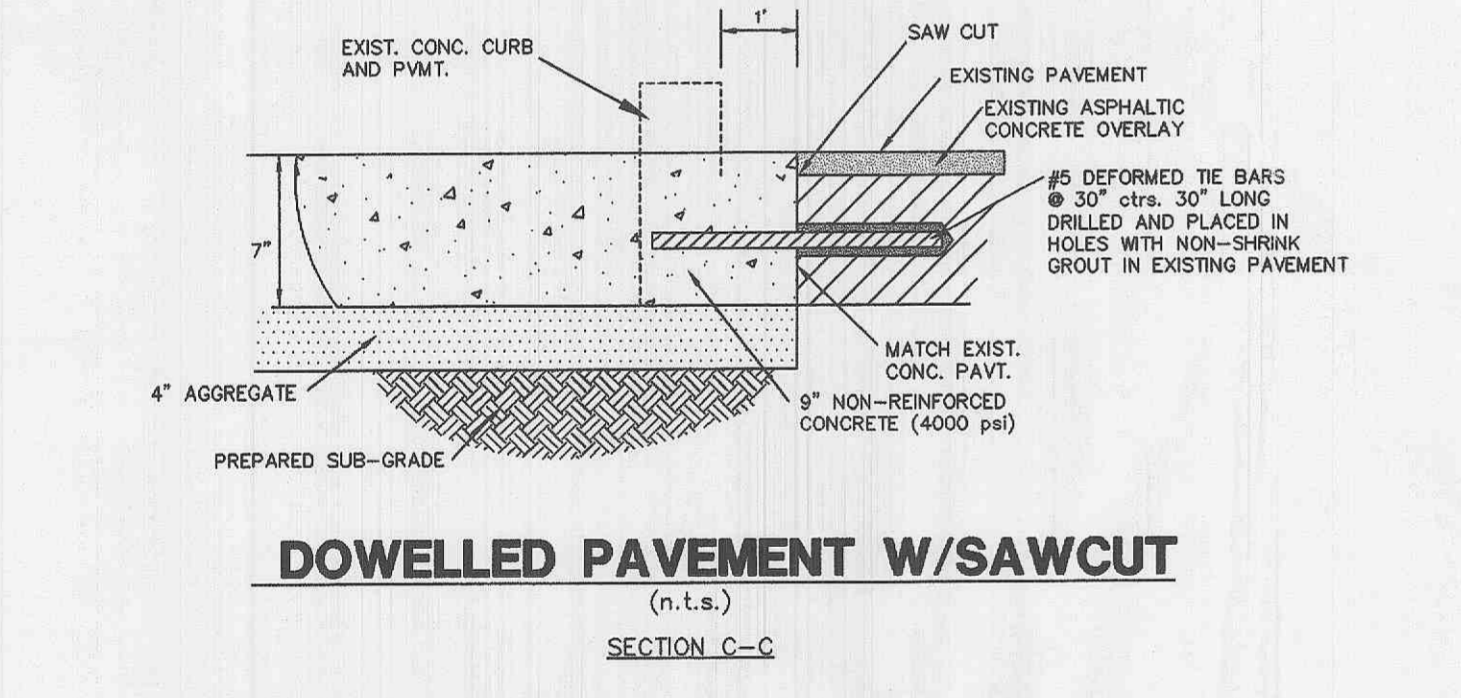
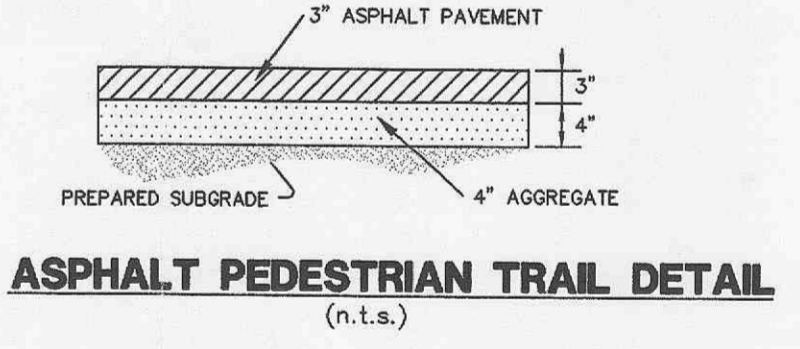
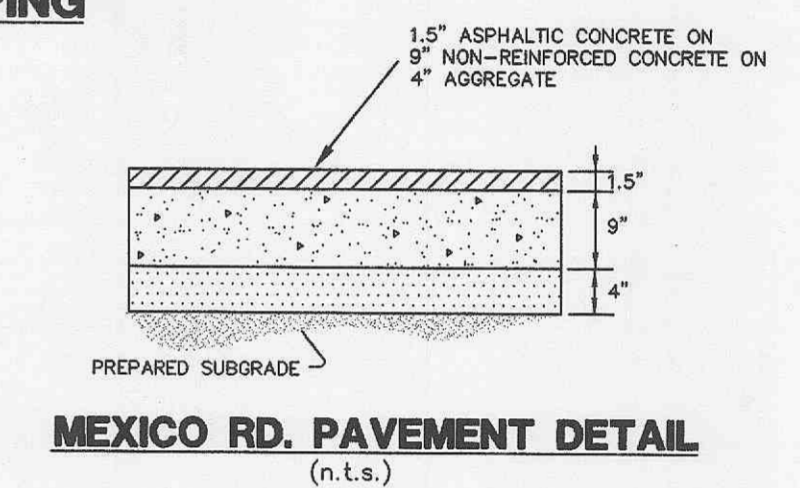
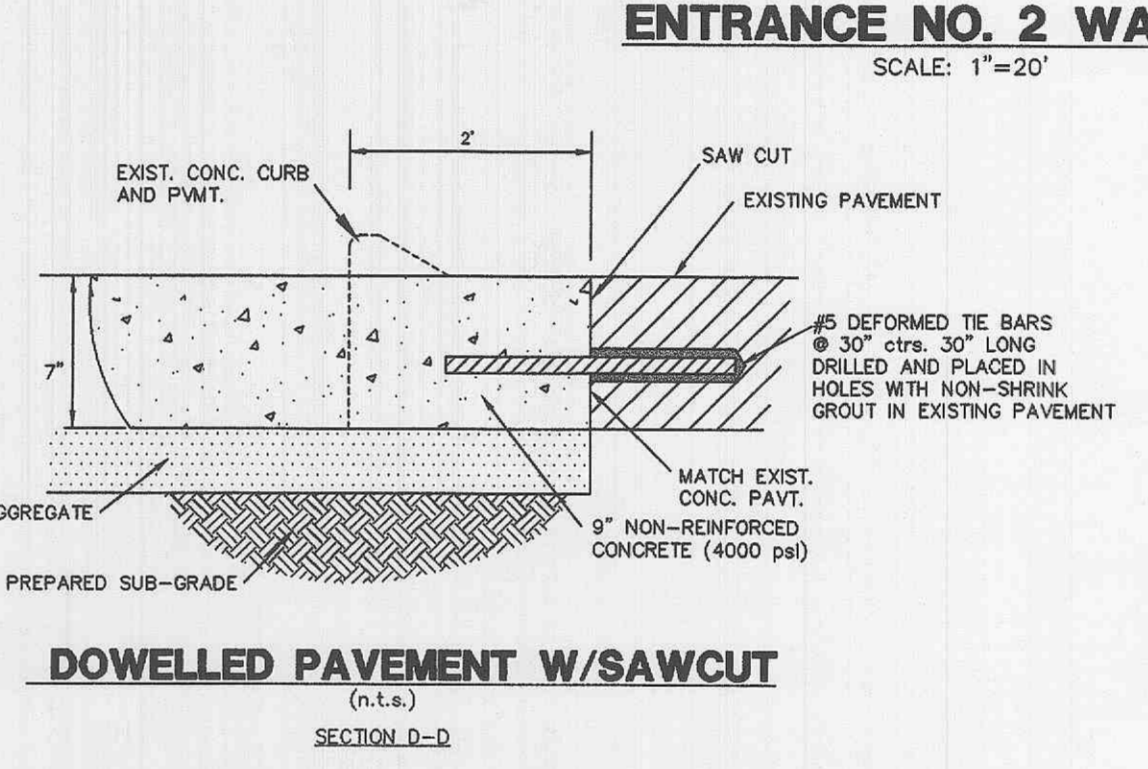
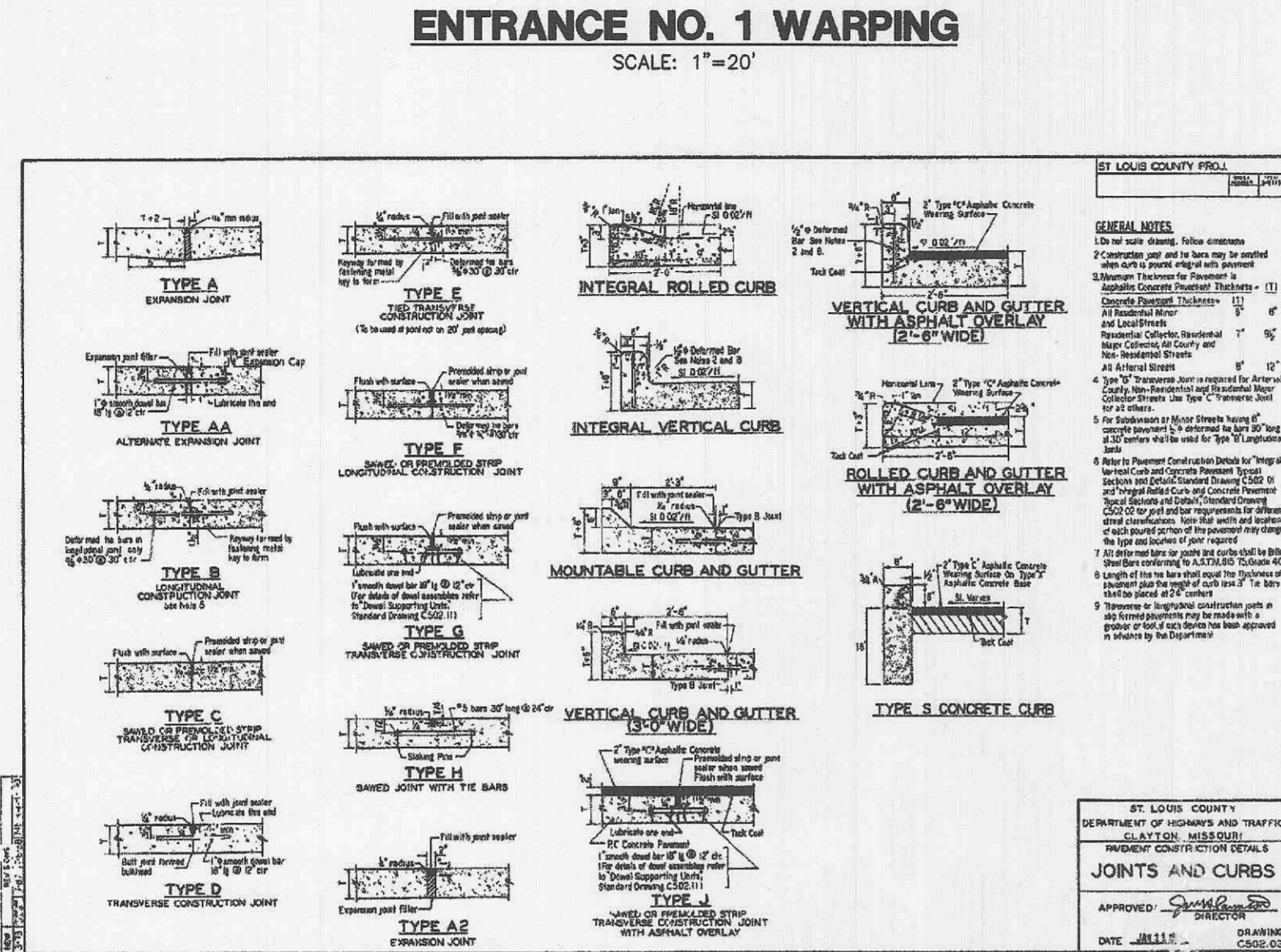
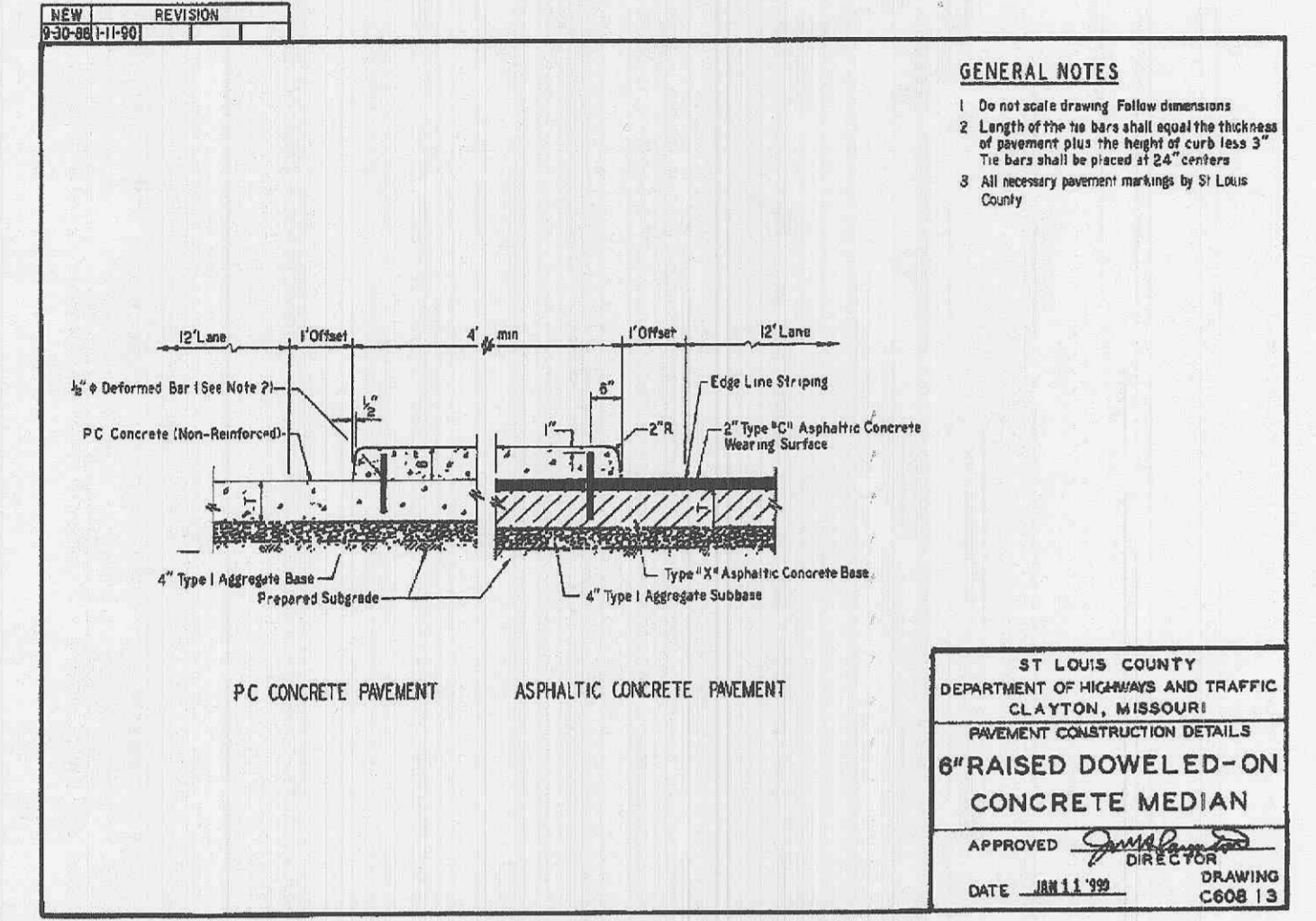
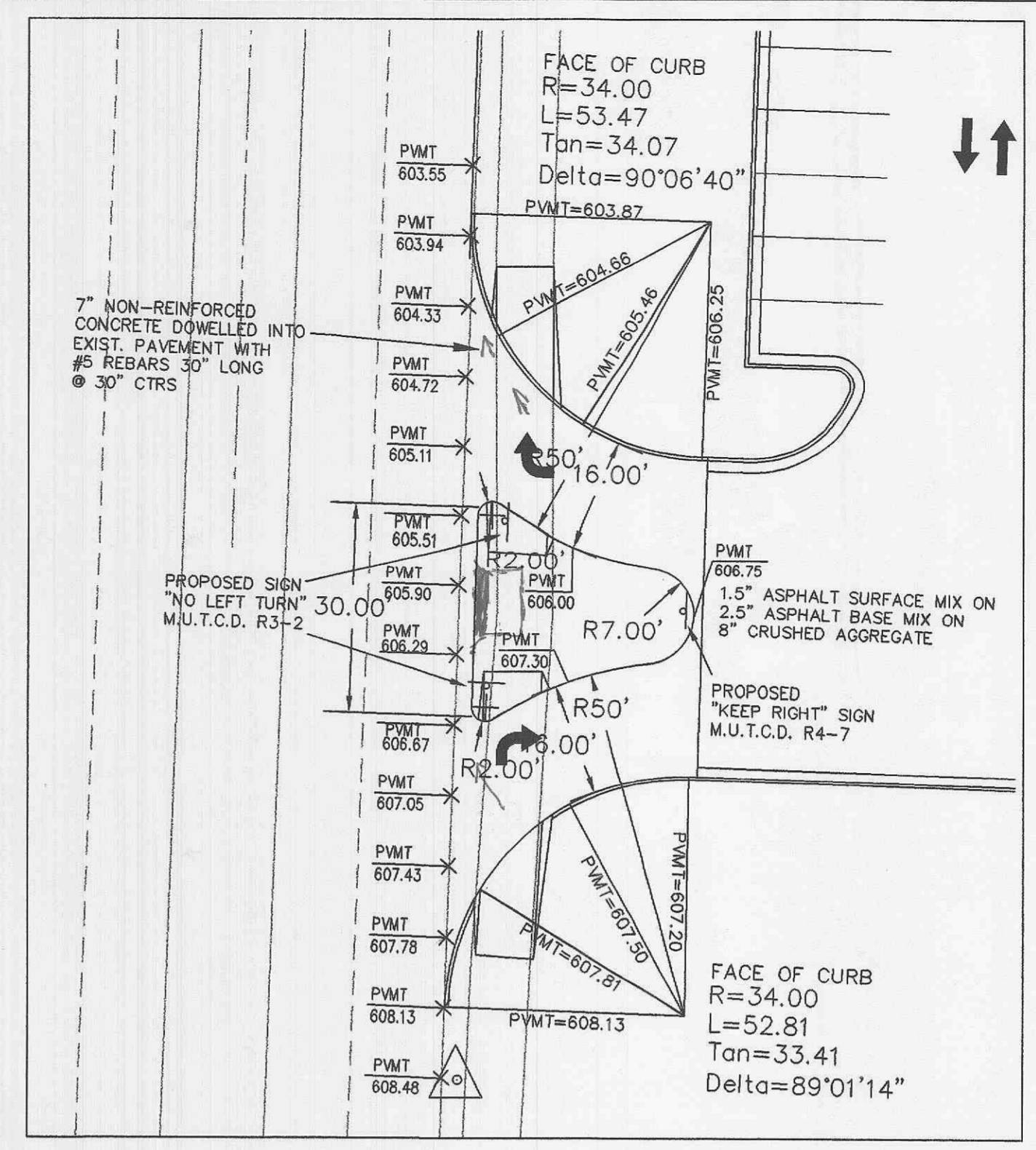
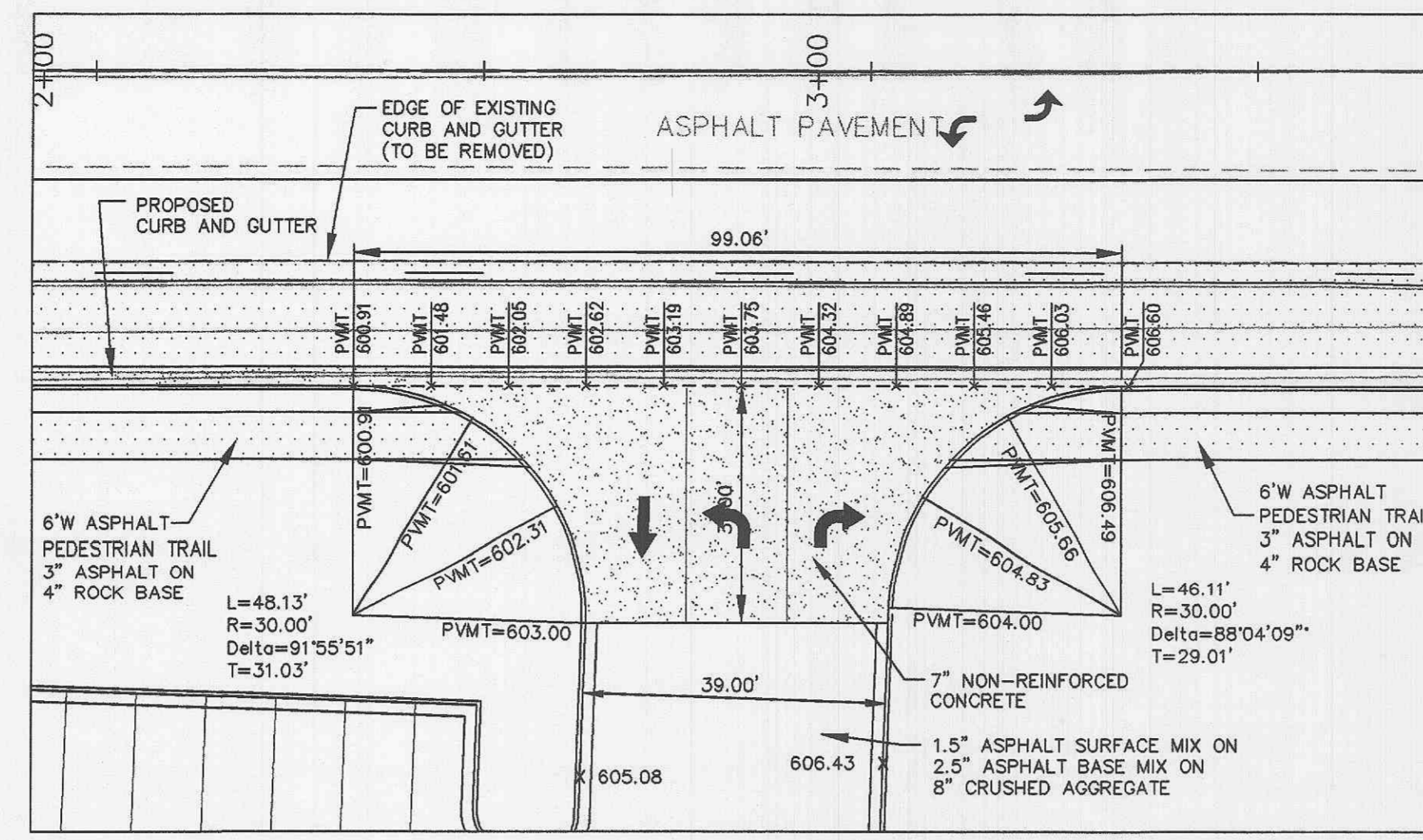
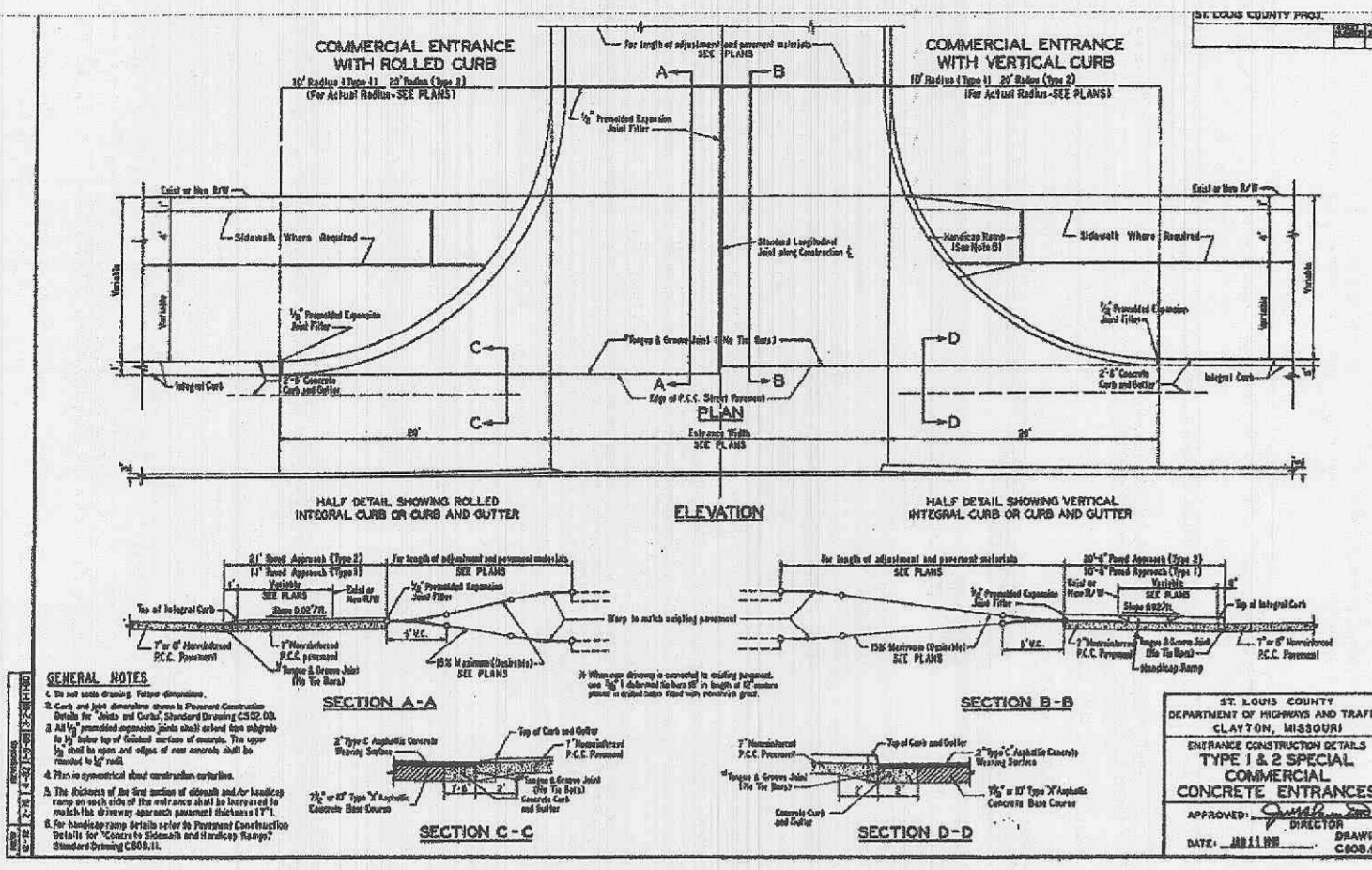


PROJECT TYPE

DRAWINGS/SPECIFICATIONS BY:
 WALGREENS' CONSULTANT
 LANDLORD'S CONSULTANT

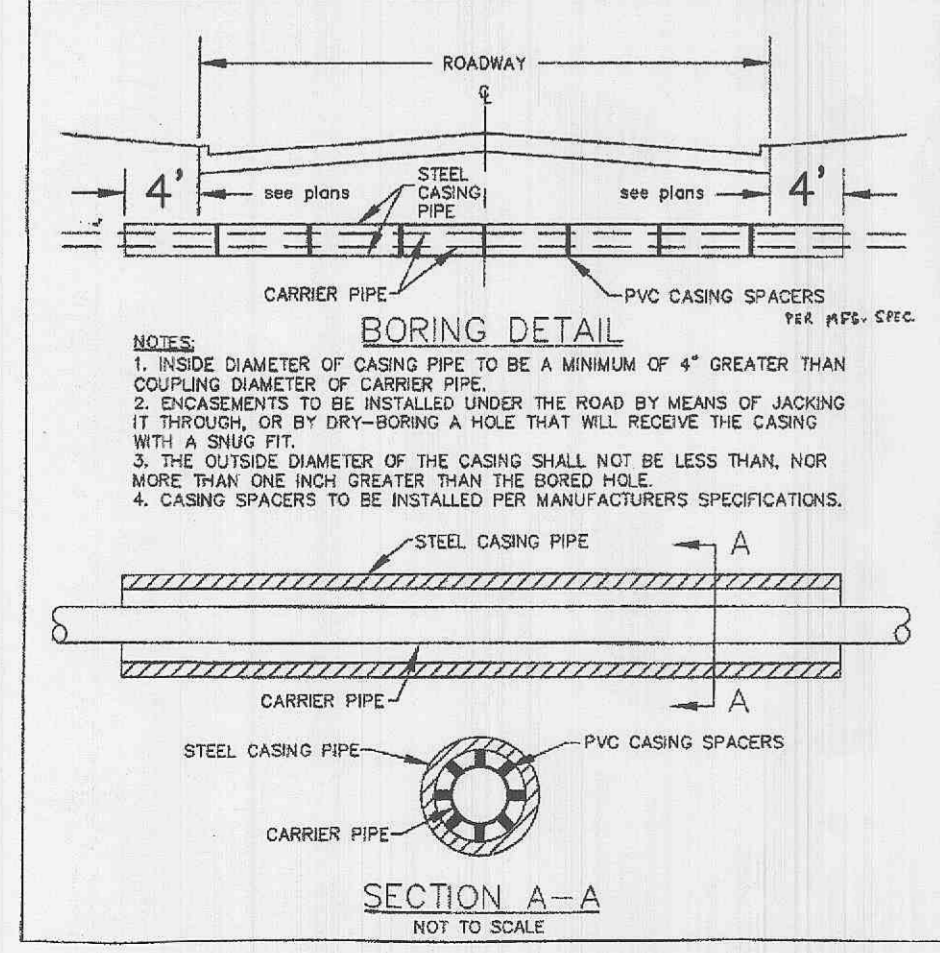
ALL CONSTRUCTION WORK, UNLESS NOTED OTHERWISE, BY:
 WALGREENS' CONTRACTOR
 LANDLORD'S CONTRACTOR

STORE	BUILDING
NEW.....	NEW.....
REMODELING.....	EXISTING.....
RELOCATION.....	NEW SHELL ONLY.....
OTHERS.....	

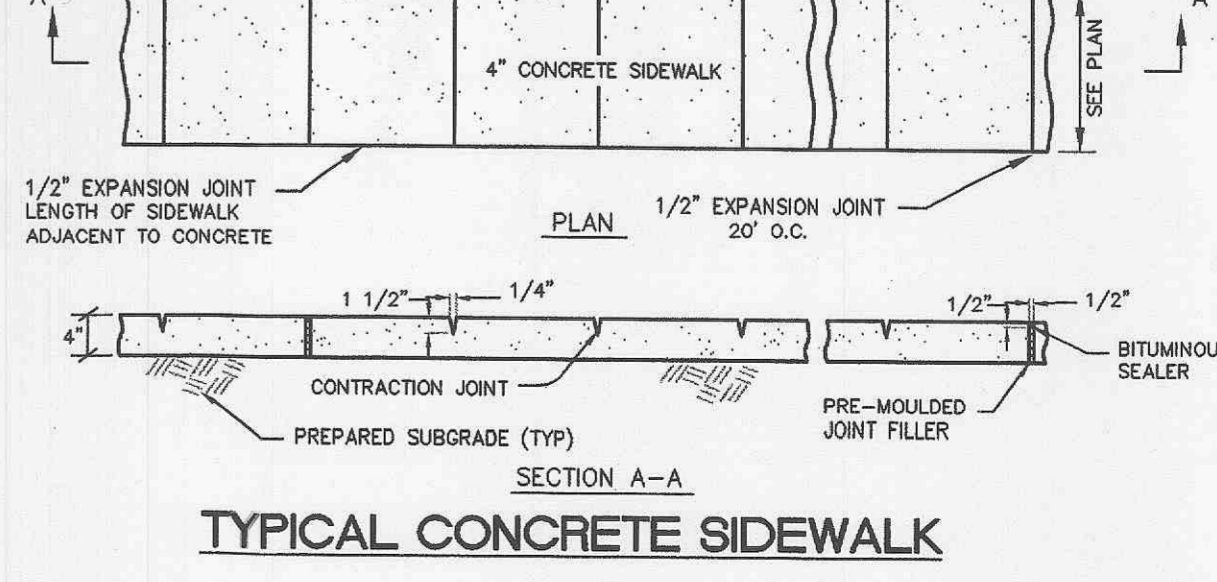
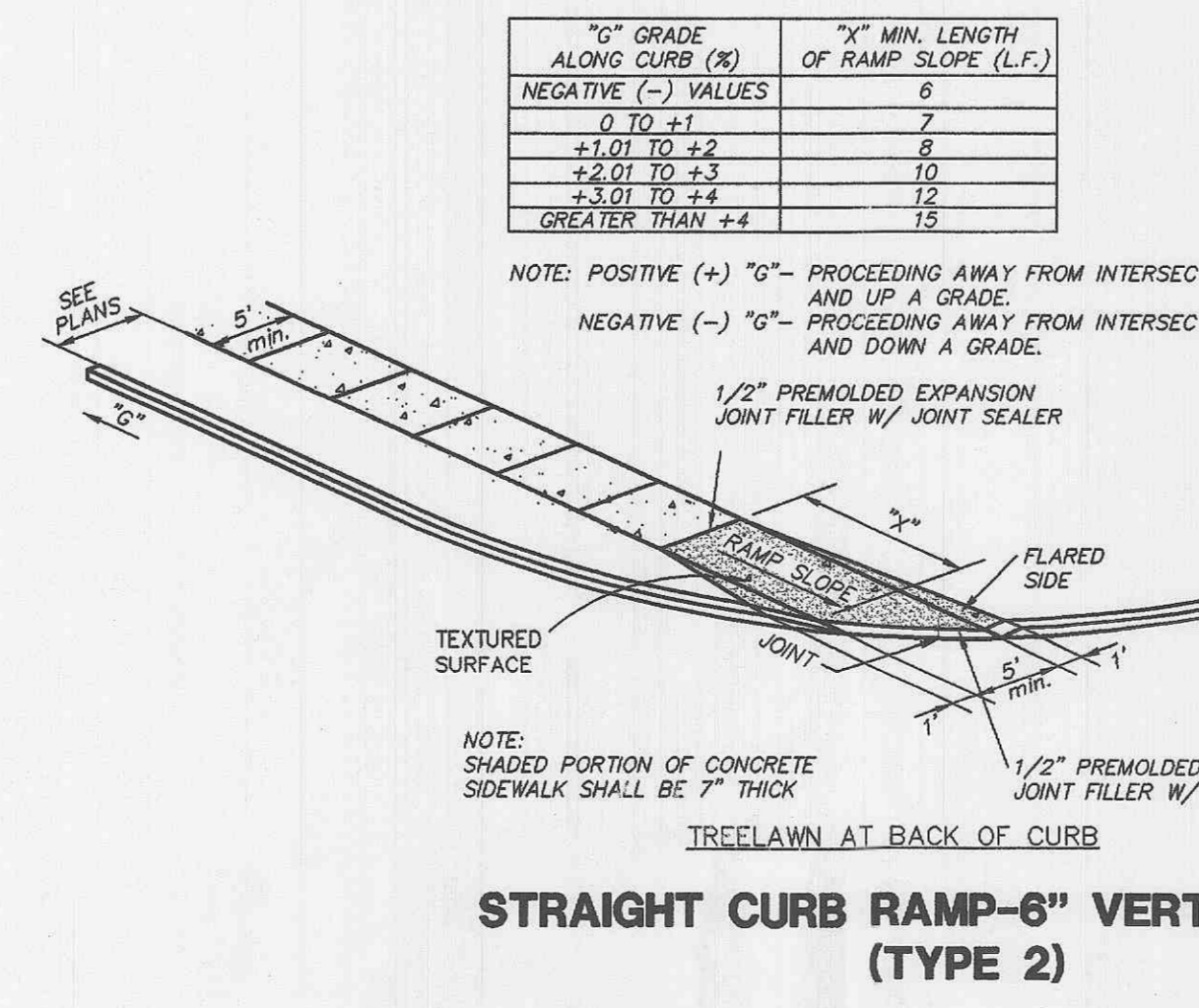


CASING PIPE USED IN THE INSTALLATION SHALL HAVE MINIMUM SHELL THICKNESS CORRESPONDING TO THE FOLLOWING REQUIREMENTS:

CASING PIPE INTERNAL DIA. (INCHES)	WALL THICKNESS (INCHES)
24	.281



- DO NOT SCALE DRAWING. FOLLOW DIMENSIONS.
- SIDEWALKS AND SIDEWALK CURB RAMPS SHALL BE CONSTRUCTED IN ACCORDANCE WITH THESE DETAILS AND THE CURRENT APPROVED "AMERICANS WITH DISABILITIES ACT ACCESSIBILITY GUIDELINES" (ADAAG).
- PROVIDE A LANDING AT THE TOP OF EACH STRAIGHT RAMP WHEN THE GRADE ALONG THE CURB (G) IS GREATER THAN +2% AND LESS THAN +7% FOR OTHER VALUES OF "G", INCLUDING ALL NEGATIVE VALUES NO LANDING IS REQUIRED.
- MINIMUM SIDEWALK WIDTH ALONG 6" VERTICAL CURB SHALL BE 3 FEET. MINIMUM SIDEWALK WIDTH ALONG 3" ROLLED CURB SHALL BE 4 FEET.
- MAXIMUM SIDEWALK CROSS SLOPE 0.02'/FT.
- ALL SIDEWALK SECTIONS SHALL BE 4" THICK, EXCEPT WHERE INDICATED OTHERWISE BY SHADDED PORTIONS SHOWN ON THE DETAILS.
- WHERE CURB RAMP MEETS PAVEMENT, BULLNOSE WILL NOT BE PERMITTED.
- CONSTRUCT A DIAGONAL RAMP WHEN THE MAXIMUM CORNER RADIUS ALLOWED FOR A STRAIGHT RAMP IS EXCEEDED.
- IF INTEGRAL CONCRETE CURB IS CONSTRUCTED, STRIKE A DUMMY JOINT ACROSS BOTTOM OF RAMP AT CURB LINE. IF CONCRETE CURB IS DOWELED-ON, BLOCK OUT PAVEMENT TO PROVIDE FULL DEPTH CURB ACROSS RAMP FROM OUTER POINT OF CURB TAPER TO OUTER POINT OF CURB TAPER.
- FOR PAVEMENT LONGITUDINAL AND TRANSVERSE JOINTS AND DOWEL AND TIE BAR REQUIREMENTS AND DIMENSIONS REFER TO PAVEMENT CONSTRUCTION DETAILS FOR "JOINTS AND CURBS", STANDARD DRAWING C802.03.
- FOR ROADWAY CROSS SLOPES, PAVEMENT TYPES, AND THICKNESSES, REFER TO "STANDARD TYPICAL SECTIONS"



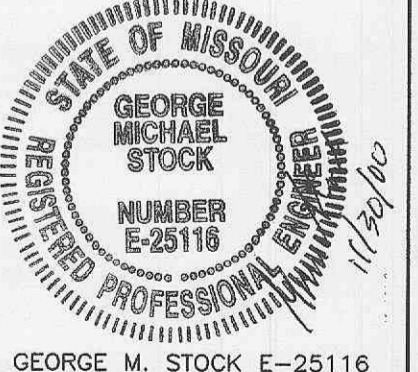
NO.	DATE	BY	DESCRIPTION	CONST.
3	11/29/00		Revised per City of O'Fallon	
2	11/15/00		Revised per City of O'Fallon	
1	10/10/00		Revised per City of O'Fallon	

REVISIONS

CERTIFICATION AND SEAL

I HEREBY CERTIFY THAT THIS PLAN AND SPECIFICATION WAS PREPARED BY ME OR UNDER MY DIRECT SUPERVISION AND THAT I AM A DULY REGISTERED ENGINEER UNDER THE LAWS OF THE STATE OF MISSOURI AS SIGNIFIED BY MY HAND AND SEAL.

GEORGE M. STOCK E-25116



PROJECT NAME
Walgreens
MEXICO & BRYAN
O'FALLON, MO.

DRAWING TITLE
CONSTRUCTION DETAILS &
ENTRANCE WARPING

DATE	8/18/00	STORE NO.		DRAWING NO.	
PROJECT NUMBER	99-2038	SCALE	AS NOTED	C7	DF 9 DWGS.
DRAWN BY	B.A.H.	RELEASED TO CONSTRUCTION			
REVIEWED BY	G.M.S.				