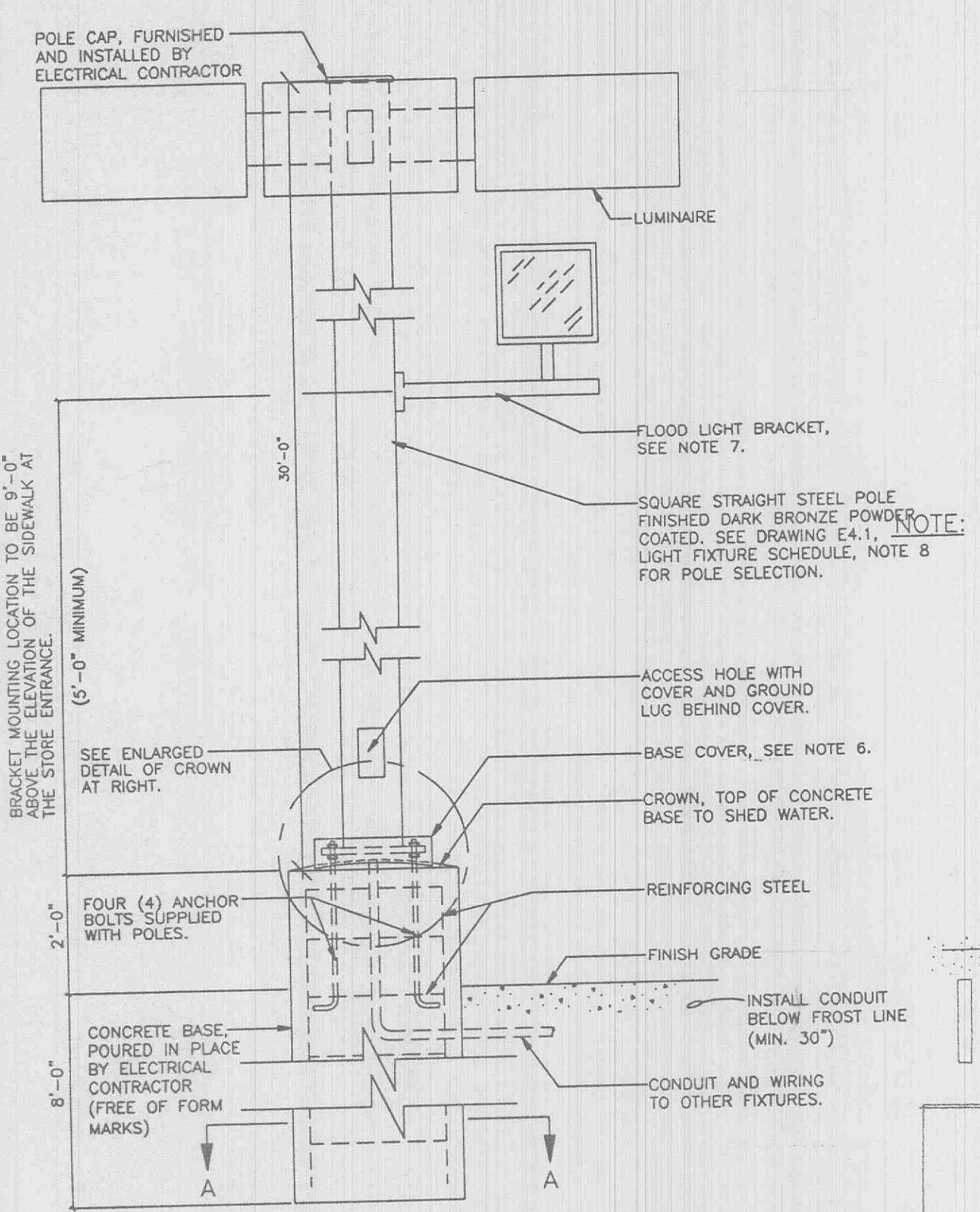


PROJECT TYPE	
DRAWINGS/SPECIFICATIONS BY:	
<input type="checkbox"/> WALGREENS' CONSULTANT	
<input checked="" type="checkbox"/> LANDLORD'S CONSULTANT	
ALL CONSTRUCTION WORK, UNLESS NOTED OTHERWISE, BY:	
<input type="checkbox"/> WALGREENS' CONTRACTOR	
<input checked="" type="checkbox"/> LANDLORD'S CONTRACTOR	(TURNKEY CONSTRUCTION)
STORE	BUILDING
NEW..... <input checked="" type="checkbox"/>	NEW..... <input checked="" type="checkbox"/>
REMODELING..... <input type="checkbox"/>	EXISTING..... <input type="checkbox"/>
RELOCATION..... <input type="checkbox"/>	NEW SHELL ONLY..... <input type="checkbox"/>
OTHERS..... <input type="checkbox"/>	



- ### FLOODLIGHT AIMING PROCEDURE
1. AIMING MUST BE PERFORMED A MINIMUM OF 1 HOUR AFTER SUNSET AND 20 MINUTES AFTER FIXTURE IS ENERGIZED.
 2. LOOSEN 3 BOLTS ON THE SUPPITTER JUST TO ALLOW LEFT/RIGHT ROTATION.
 3. LOOSEN LARGE KNUCKLE BOLT TO ALLOW UP/DOWN ROTATION.
 4. ROTATE THE FIXTURE LEFT/RIGHT AND THEN UP/DOWN TO ACHIEVE AN EVEN LIGHT DISTRIBUTION ON THE "WALGREENS" LOGO SCRIPT SIGN. REPEAT THE ABOVE PROCEDURE WITH THE FLOOD LIGHT ON OTHER POLE.
 5. VERIFY THAT THE LIGHT IS DISTRIBUTED EVENLY ALONG THE VERTICAL SURFACE OF THE CANOPY WITH THE "WALGREENS" LOGO SCRIPT SIGN. VERIFY THAT MINIMUM GLARE ON THE PARKING LOT AND INSIDE THE STORE IS ACHIEVED. RE-AM FLOOD(S) IF REQUIRED.
 6. TIGHTEN ALL BOLTS.
 7. FLOOD LIGHTS CAN BE LEFT ENERGIZED ONLY WITH LOUVERS INSTALLED AND AIMING PROCEDURE (ITEMS 1 THRU 6 ABOVE) PERFORMED.

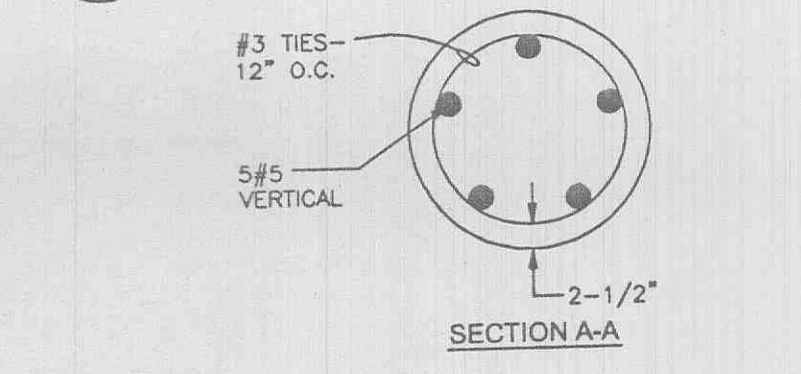
PLYLON SIGN ELECTRICAL DATA (BASED ON 120V)

	LAMPS	BALLAST	AMPS	V.A.	CIRCUITS	CIRCUIT ORIGIN
PRIMARY PANEL	(16) 60 W 1-12 CWHO	(2) 256-672 (1) 256-472	9.0 2.7	1080.0 324.0	(1) 20 AMP	SIGN PANEL 'LP-SP'
LED READER BOARD	DAKTRONICS LED	-----	13.8 (PER 2 DISPLAYS)	1650.0 (PER 2 DISPLAYS)	(1) 20 AMP	SIGN PANEL 'LP-SP'
	HITECH LED	-----	30.0 (PER 2 DISPLAYS)	3600.0 (PER 2 DISPLAYS)	(2) 20 AMP	SIGN PANEL 'LP-SP'

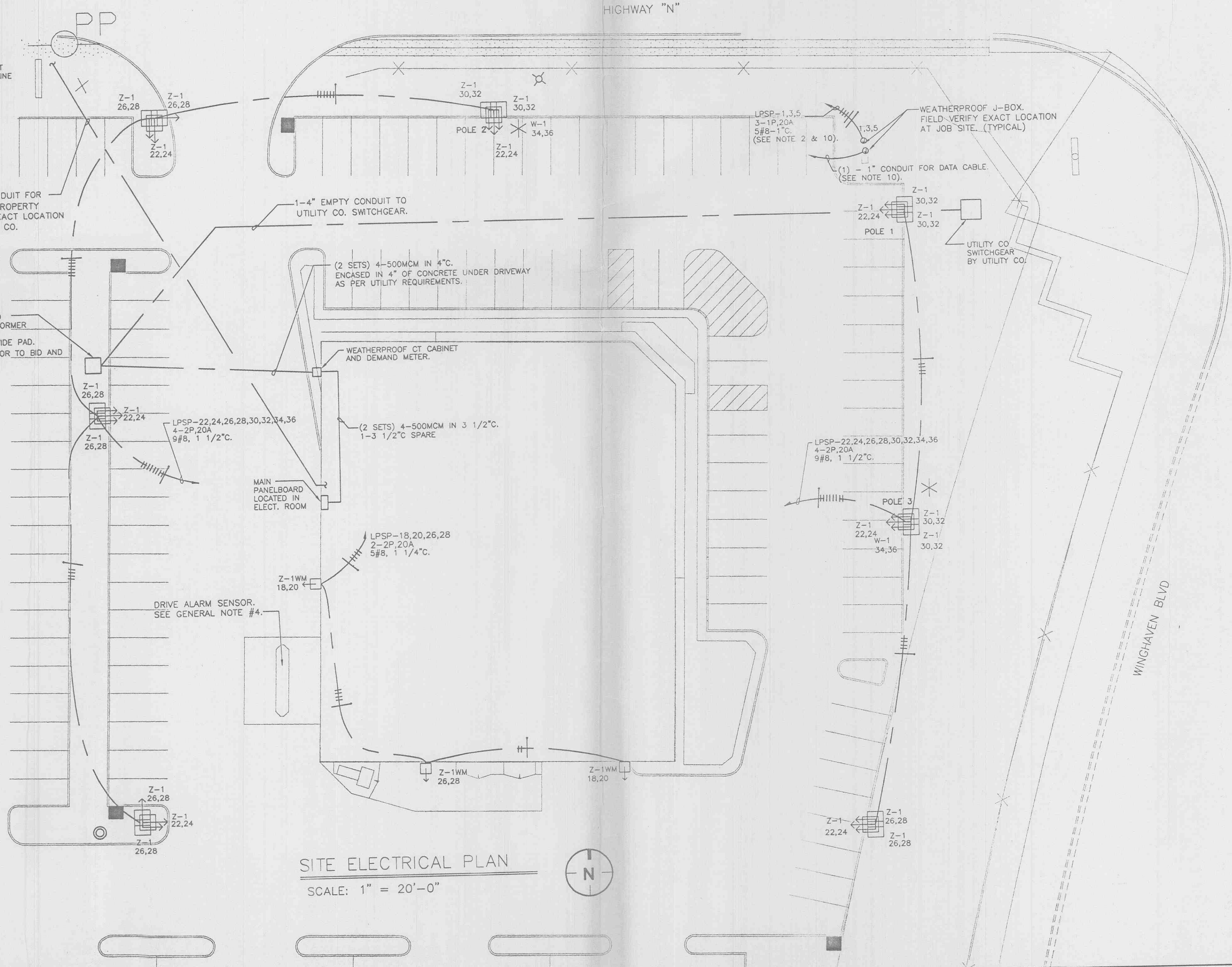
* NOTE: A GROUND ROD (PER DAKTRONICS SPECIFICATIONS) IS REQUIRED TO BE INSTALLED BY THE ELECTRICAL CONTRACTOR FOR ALL DAKTRONICS PLYLON SIGNS. SEE DETAIL 5/E4.1 FOR ADDITIONAL INFORMATION.

- ### NOTES
1. ALL WORK SHOWN SHALL COMPLY WITH ALL NATIONAL, STATE AND LOCAL CODES, ORDINANCES, ETC.
 2. FOR WALGREENS STANDARD PLYLON SIGN, PROVIDE (1) 20A, 120V CIRCUIT FROM 'LP-SP' TO PLYLON SIGN FOR PRIMARY PANEL (16" x 5" x 4") AND (2) 20A, 120V CIRCUITS FROM 'LP-SP' FOR THE LED DISPLAYS (24 X 80 PIXELS EACH SIDE, 3" x 7 1/2" x 10" x 1"). FOR NON-STANDARD PLYLON SIGNS, SEE PLYLON SIGN ELECTRICAL DATA BELOW.
 3. FURNISH AND INSTALL THE DRIVE ALARM SENSOR, WITH CABLE ROUTED BACK TO THE CONTROL PANEL, WHICH IS MOUNTED ON THE INTERIOR WALL OF THE DRIVE-THRU WINDOW UNIT. SEE DRAWING E1.2 FOR ELECTRICAL REQUIREMENTS.
 4. SEE LIGHTING FIXTURE SCHEDULE ON DRAWING E4.1 FOR FIXTURE INFORMATION.
 5. THE SITE LIGHTING IS BASED ON:
 - COOPER,
 - GENERAL ELECTRIC,
 - LITHONIA
 6. PROVIDE CROWN ON TOP OF CONCRETE BASE TO COMPLETELY SHED WATER. IF WATERSHED IS NOT PROVIDED, THEN GROUTING WITH A NON-SHRINK GROUT IS REQUIRED. PROVIDE WEEP HOLES FOR DRAINAGE.
 7. FLOODLIGHT BRACKET SHALL BE 3" SQUARE STRUCTURAL TUBING WELDED TO STEEL MOUNTING PLATE WITH 2" TENON AND FRICTION FIT STEEL END CAP. BRACKET MOUNTING HARDWARE SHALL INCLUDE (2) 1/2" x 13 x 6 1/2" STAINLESS STEEL THRU-BOLTS, NUTS AND LOCKWASHERS.
 8. THE POLE HOLDING THE "W-1" OR THE "W-2" FLOOD LIGHT SHALL BE LOCATED AT THE PERIMETER OF THE SITE WITHIN 80 FEET OF THE CENTERLINE OF THE "WALGREENS" LOGO SCRIPT SIGN ON THE FACADE.

- ### NOTES CONT.
9. GROUP B, DRAWING E2.1A OF CONTROL SCHEDULE CONTROLS LIGHTS REQUIRED TO ILLUMINATE PATH OF TRAVEL FROM THE STORE ENTRANCE TO THE DESIGNATED EMPLOYEE PARKING SPACES. ACCORDING TO SPECIFIC LAYOUT SHOWN ON CRITERIA DRAWING E0.1, LIGHTS ON THREE POLES ARE INCLUDED IN GROUP B. SELECTION OF POLES IS BASED ON THE FOLLOWING LOGIC:
 - POLE 1 - CLOSEST TO INTERSECTION
 - POLE 2 - NEXT TO THE CLOSEST TO INTERSECTION ON STREET WITH HIGHER TRAFFIC COUNT (MAIN STREET)
 - POLE 3 - TWO FOLLOWING OPTIONS ARE CONSIDERED FOR POLE LOCATION:
 - a. ALONG PROPERTY LINE IF PARKING STALLS ARE PRESENT AND NON-RESIDENTIAL
 - b. ALONG STREET WITH LOWER TRAFFIC COUNT.
 NOTE THAT THE SPECIFIC LIGHTING SCHEME OUTLINED ABOVE APPLIES ONLY TO THE PROTOTYPICAL SITE PLAN SHOWN HEREIN. FOR OTHER SITE LAYOUTS, PLEASE CONSULT WITH THE WALGREENS PROJECT ARCHITECT TO DETERMINE WHICH POLES SHALL BE PART OF GROUP B.
 10. PROVIDE A MINIMUM OF TWO (2) 1" DIAMETER PVC CONDUITS TO PLYLON SIGN(S) TO SEPARATE DATA CABLE AND POWER CIRCUITS. 2"-0" SEPARATION SHALL BE MAINTAINED BETWEEN POWER AND DATA CONDUITS. RUN DATA CONDUIT WITH PULL STRINGS TO OFFICE SPACE. SEE DRAWING E1.3 - ETHERNET SYSTEM, FOR EXACT LOCATION. ALL CONDUIT AND POWER SHALL BE FURNISHED AND INSTALLED BY THE ELECTRICAL CONTRACTOR. PLYLON DATA CABLE, FURNISHED AND INSTALLED BY WALGREENS CONTRACTOR.



NOTE
 FIELD VERIFY ANY AND ALL OVERHEAD LINES THAT MAY INTERFERE WITH NEW SITE LIGHTING POLES PRIOR TO INSTALLATION OF LIGHT STANDARD BASE.
 PROVIDE ADEQUATE SHIELDING TO LIGHT FIXTURE TO COMPLY WITH THE CITY OF O'FALLON LIGHTING ORDINANCES.



SITE ELECTRICAL PLAN
 SCALE: 1" = 20'-0"

THE SEAL AND SIGNATURE APPLY ONLY TO THE DOCUMENT TO WHICH THEY ARE AFFIXED, AND EXPRESSLY DISCLAIM ANY RESPONSIBILITY FOR ALL OTHER PLANS, SPECIFICATIONS, ESTIMATES, REPORTS, OR OTHER DOCUMENTS OR INSTRUMENTS RELATING TO OR INTENDED TO BE USED FOR ANY PART OR PARTS OF THE ARCHITECTURAL OR ENGINEERING PROJECT.

NO.	DATE	BY	DESCRIPTION	CONST.
REVISIONS				
CERTIFICATION AND SEAL				

I HEREBY CERTIFY THAT THIS PLAN AND SPECIFICATION WAS PREPARED BY ME OR UNDER MY DIRECT SUPERVISION AND THAT I AM A DULY REGISTERED ARCHITECT OR ENGINEER UNDER THE LAWS OF THE STATE OF MISSOURI AS SIGNIFIED BY MY HAND AND SEAL.

PROJECT NAME		
WALGREENS STORE (SWC) WINGHAVEN AND HIGHWAY N O'FALLON, MISSOURI		
DRAWING TITLE		
SITE ELECTRICAL PLAN		
DATE	STORE NO.	DRAWING NO.
10/31/2002	06711	E0.1
DRAWN BY:	SCALE: AS SHOWN	RELEASED TO CONSTRUCTION
PJH		
REVIEWED BY:	OF 25 DWGS.	
DDT		

8/10