

FRONT ELEVATION

PROFILE ELEVATION

NOTE: CONTRACTOR SHALL SUBMIT A SHOP DRAWING SIGNED AND SEALED BY A PROFESSIONAL ENGINEER LICENSED IN THE STATE OF MISSOURI FOR APPROVAL.

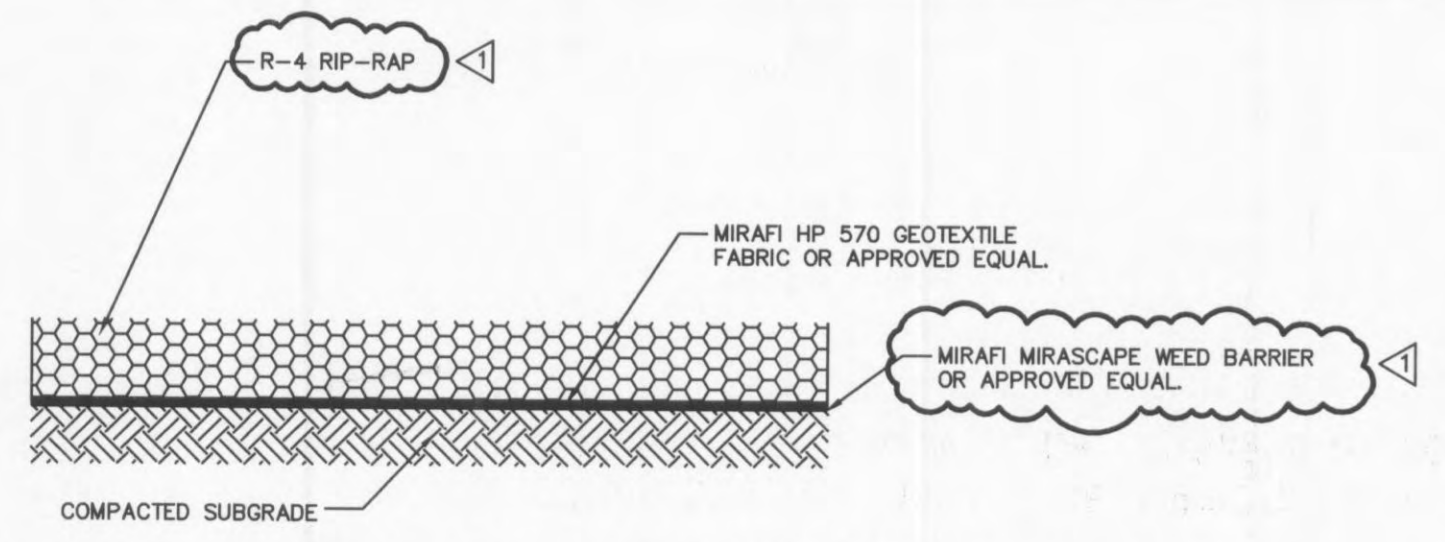
OUTLET CONTROL STRUCTURE DETAIL

N.T.S.
(STORM STRUCTURE #8)

Provide a marking on the storm sewer inlets. The City will allow the following markers and adhesive procedures only as shown in the table below or an approved equal by Almetek Industries. 'Peel and stick' adhesive pads will not be allowed.

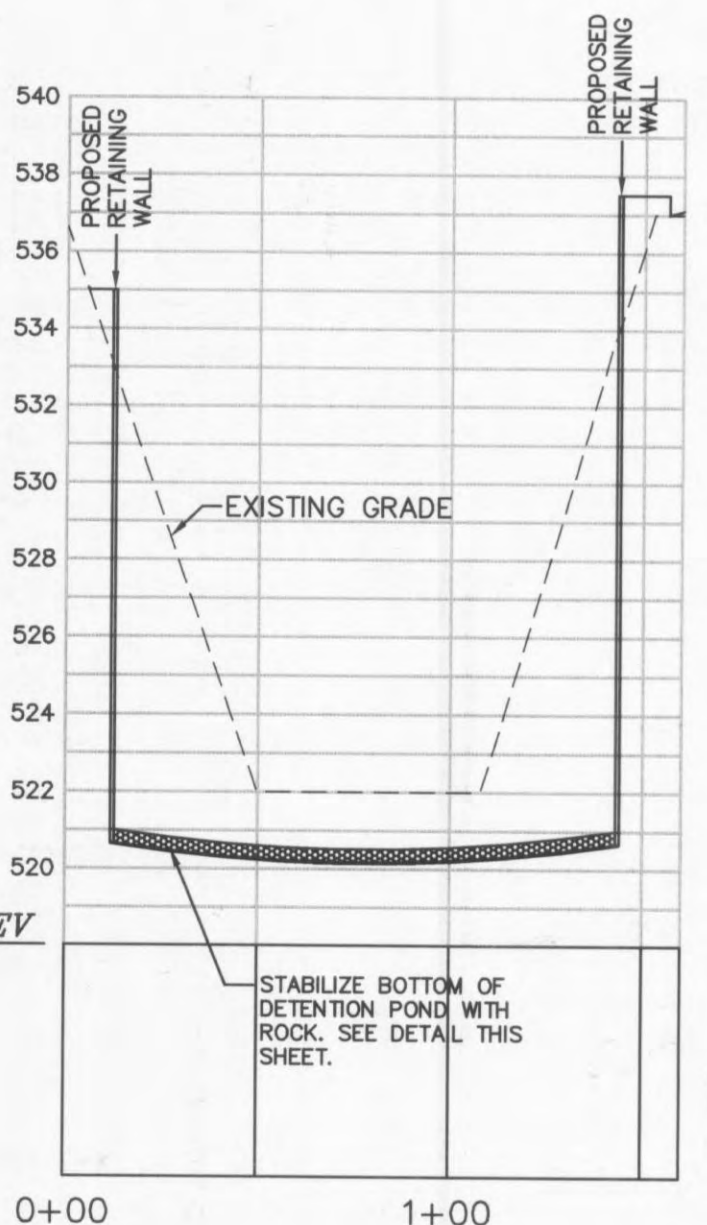
Manufacturer	Size	Adhesive	Style	Message (Part #)	Website
ACP International	3 7/8"	Epoxy	Crystal Cap	No Dumping Drains To Waterways (SD- W-CC)	www.acpinternational.com
DAS Manufacturing, Inc.	4"	Epoxy	Standard Style	No Dumping Drains To Stream (#SDS)	www.dasmanufacturing.com

STORM SEWER INLET MARKINGS



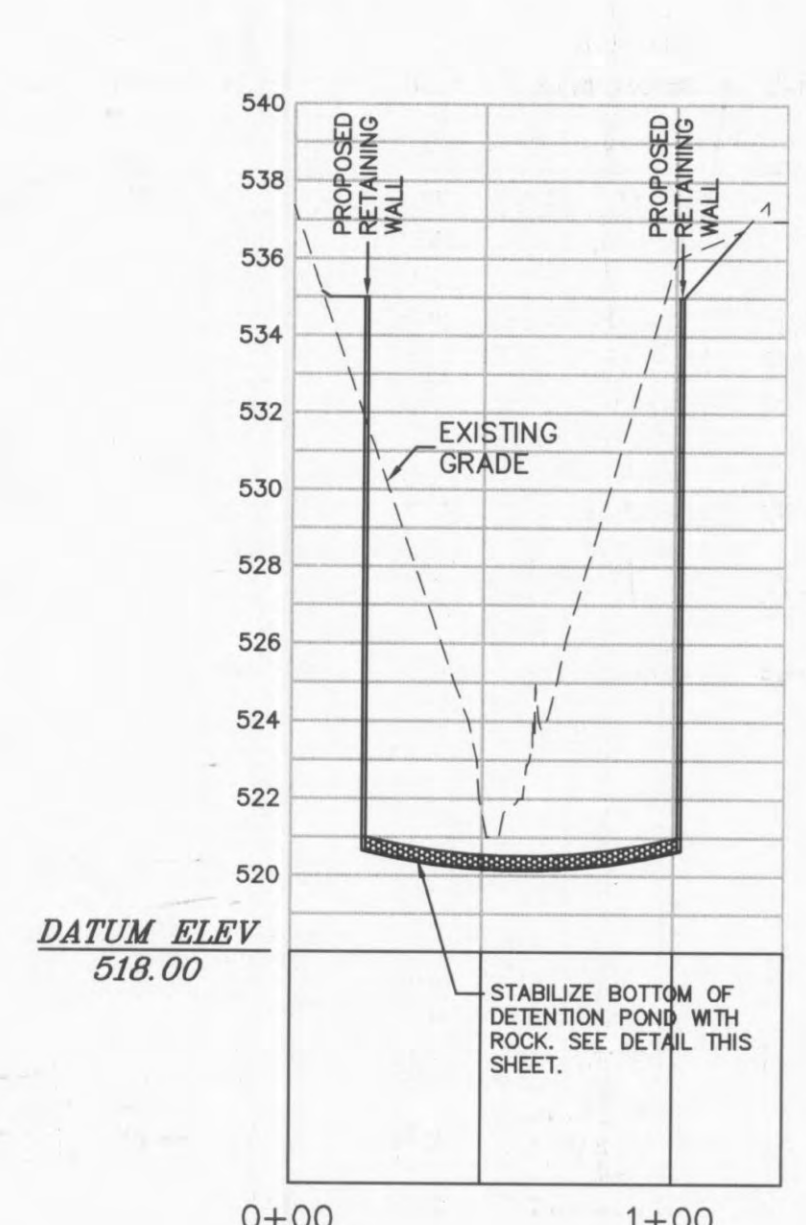
DETENTION POND BOTTOM STABILIZATION

N.T.S.



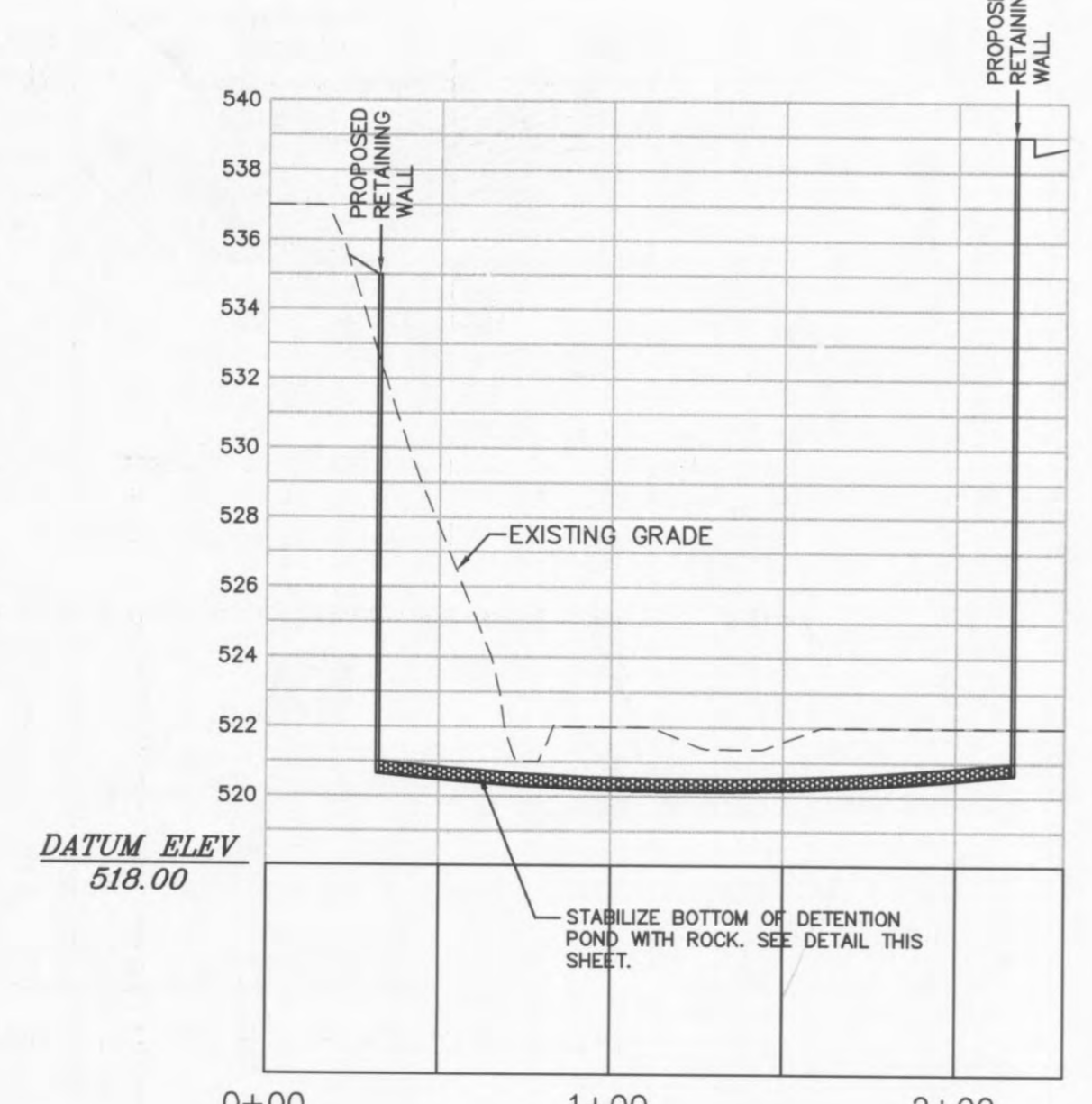
CROSS SECTION A-A

HORIZONTAL SCALE: 1" = 50'
VERTICAL SCALE: 1" = 5'



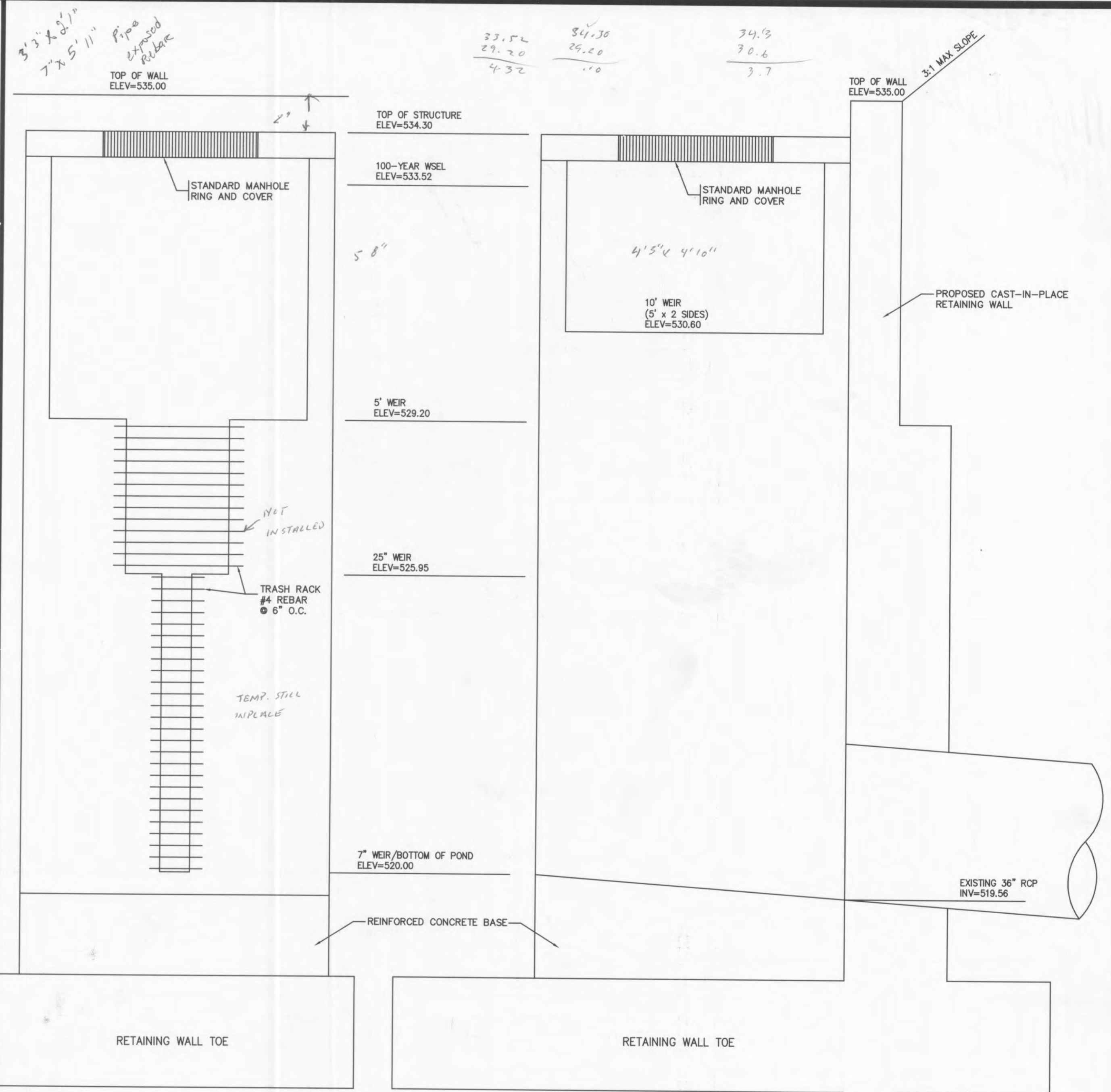
CROSS SECTION B-B

HORIZONTAL SCALE: 1" = 50'
VERTICAL SCALE: 1" = 5'



CROSS SECTION C-C

HORIZONTAL SCALE: 1" = 50'
VERTICAL SCALE: 1" = 5'



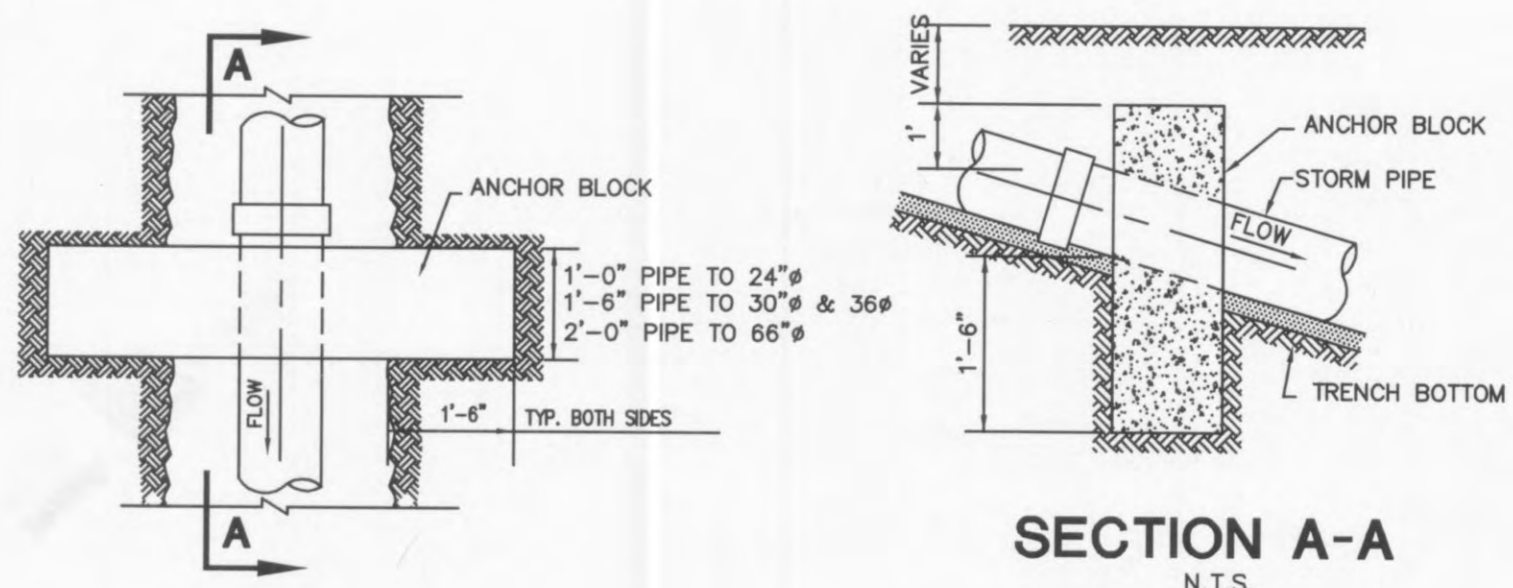
FRONT ELEVATION

SIDE ELEVATION

OUTLET CONTROL STRUCTURE SHOWN FOR REFERENCE ONLY. REFER TO RETAINING WALL DESIGN DRAWINGS FOR CONSTRUCTION DETAIL

DETENTION POND OUTLET CONTROL STRUCTURE

N.T.S.



SECTION A-A

N.T.S.

CONCRETE ANCHOR FOR STORM OR SEWER PIPE

N.T.S.

PLANNING AND DEV. DEPT. FILE NO.: 00-109.02 DATE OF PLANNING APPROVAL: 09/06/2007

GRADING PLAN DETAILS

Wolverton & Associates
Consulting Engineers + Land Surveyors
6745 Sugarloaf Parkway • Suite 100 • Duluth, Georgia 30087
Phone: (770) 447-9999 • Fax: (770) 447-9070
www.wolverton-assoc.com



PROPOSED EXPANSION TO WAL-MART #2616-04
O'FALLON POINTE CENTRE
O'FALLON, MISSOURI 63366
BY: WAL-MART REAL ESTATE BUSINESS TRUST
BENTONVILLE, AR.

REVISIONS	BY
ADDENDUM 6 6/18/08	CER

DRAWN BY CER
CHECKED BY DMW
DATE: 05/30/2008
SCALE: NOT TO SCALE
JOB No. 06-107
SHEET NUMBER

DE-2B

EDDS • 6161