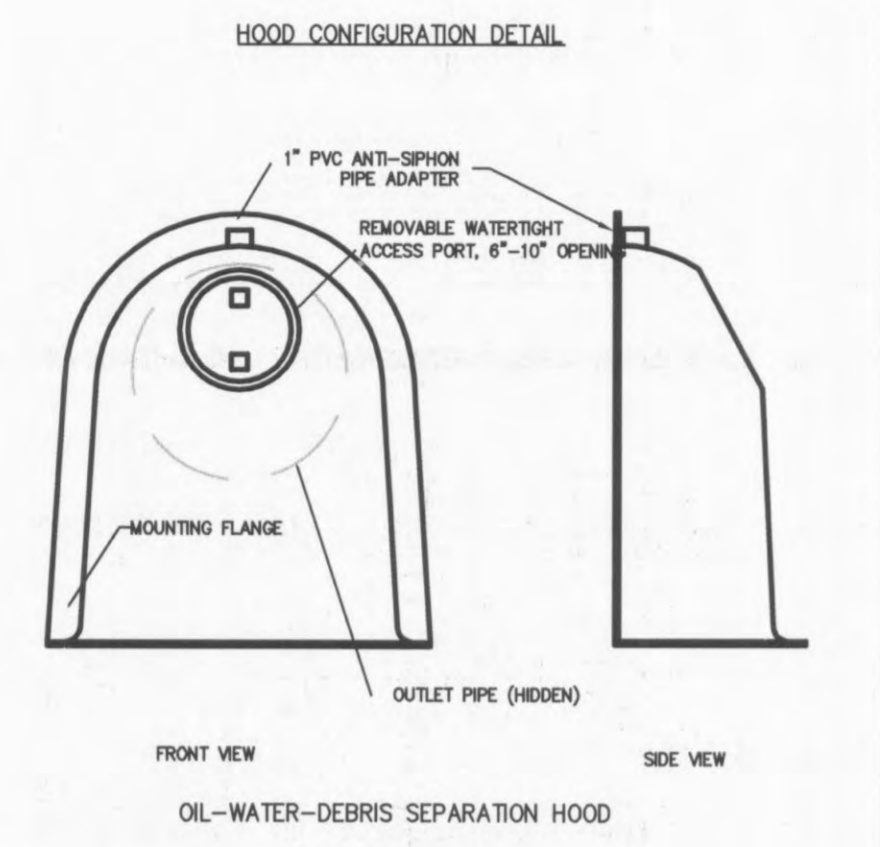


SNOUT U.S.PATENT #6126817 ADDITIONAL PATENTS PENDING  
**BMP, INC.**  
 53 MT. ARCHER ROAD, LYME, CT. 06371  
 (800) 504-8008 FAX: (860)434-3195

DESCRIPTION	DATE	SCALE
SNOUT INLINE INSTALLATION	09/17/99	NONE
DRAWING NUMBER	SC-IN	

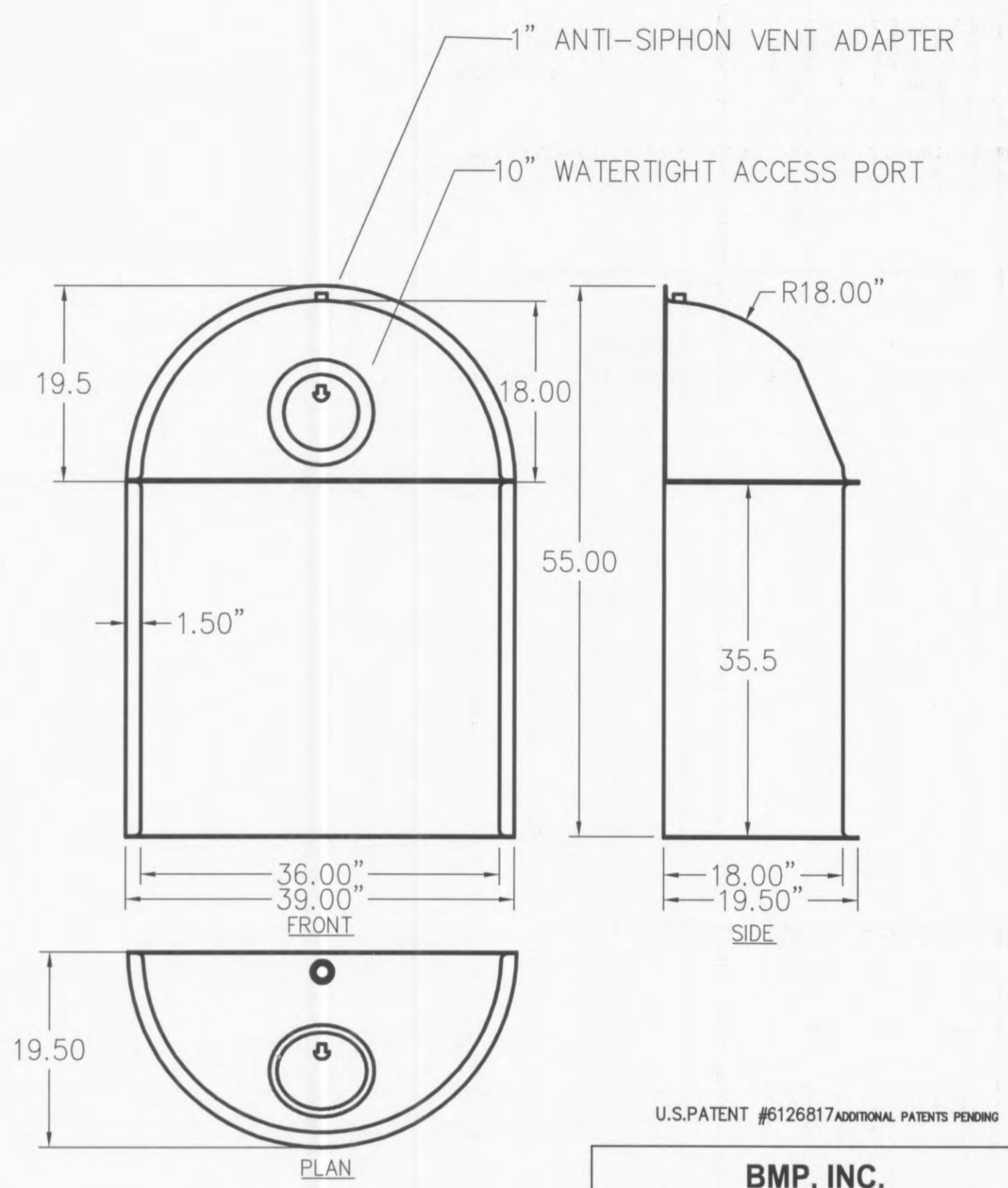
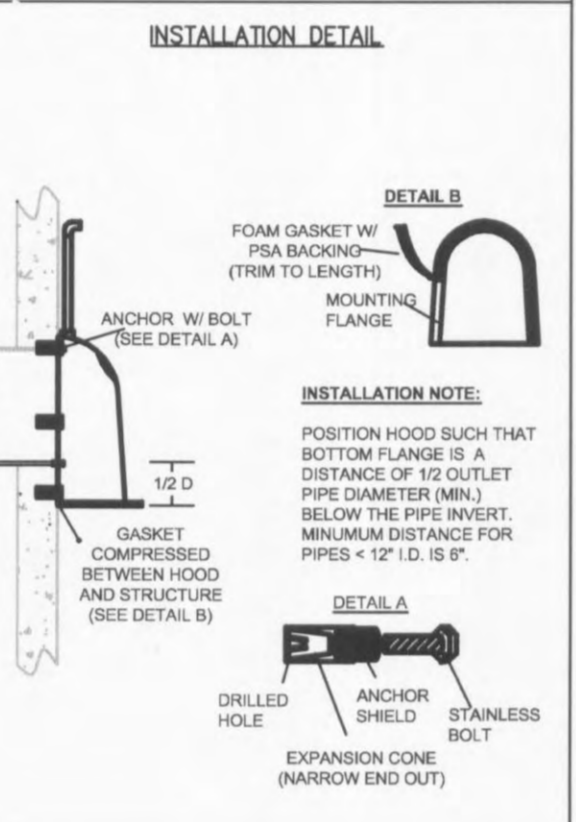
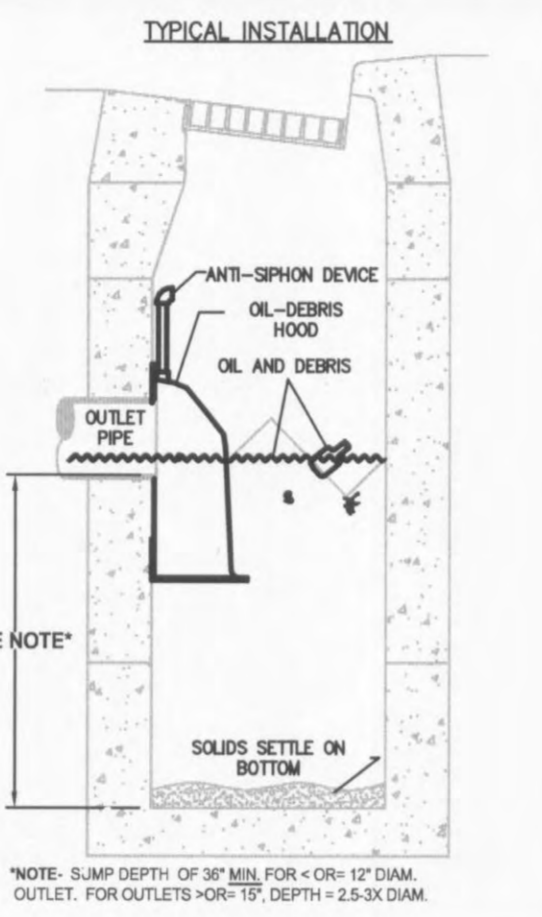


- MATERIAL AND DESIGN NOTES:**
- ALL HOODS SHALL BE CONSTRUCTED OF A GLASS REINFORCED RESIN COMPOSITE WITH ISO GEL COAT EXTERIOR FINISH WITH A MINIMUM 0.125" LAMINATE THICKNESS.
  - ALL HOODS SHALL BE EQUIPPED WITH A WATERTIGHT ACCESS PORT, A MOUNTING FLANGE, AND AN ANTI-SIPHON VENT AS DRAWN. (SEE CONFIGURATION DETAIL)
  - THE SIZE AND POSITION OF THE HOOD SHALL BE DETERMINED BY OUTLET PIPE SIZE AS PER MANUFACTURER'S RECOMMENDATION.
  - THE BOTTOM OF THE HOOD SHALL EXTEND DOWNWARD A DISTANCE EQUAL TO 1/2 THE OUTLET PIPE DIAMETER WITH A MINIMUM DISTANCE OF 6" FOR PIPES <12" I.D.
  - THE ANTI-SIPHON VENT SHALL EXTEND ABOVE HOOD BY MINIMUM OF 3" AND A MAXIMUM OF 24" ACCORDING TO STRUCTURE CONFIGURATION.
  - THE SURFACE OF THE STRUCTURE, WHERE THE HOOD IS MOUNTED SHALL BE FINISHED SMOOTH AND FREE OF LOOSE MATERIAL.
  - THE HOOD SHALL BE SECURELY ATTACHED TO STRUCTURE WALL WITH 3/8" STAINLESS STEEL BOLTS AND OIL-RESISTANT GASKET AS SUPPLIED BY MANUFACTURER. (SEE INSTALLATION DETAIL)
  - INSTALLATION INSTRUCTIONS SHALL BE FURNISHED WITH MANUFACTURER SUPPLIED INSTALLATION KIT. INSTALLATION KIT SHALL INCLUDE:  
 A. INSTALLATION INSTRUCTIONS  
 B. PVC ANTI-SIPHON VENT PIPE AND ADAPTER  
 C. OIL-RESISTANT CRUSHED CELL FOAM GASKET WITH PSA BACKING  
 D. 3/8" STAINLESS STEEL BOLTS  
 E. ANCHOR SHIELDS

\* REPRESENTATIVE EXAMPLE CAN BE VIEWED AT WWW.STORMWATERBMP.COM OR FOR MORE INFORMATION CALL 800-504-8008

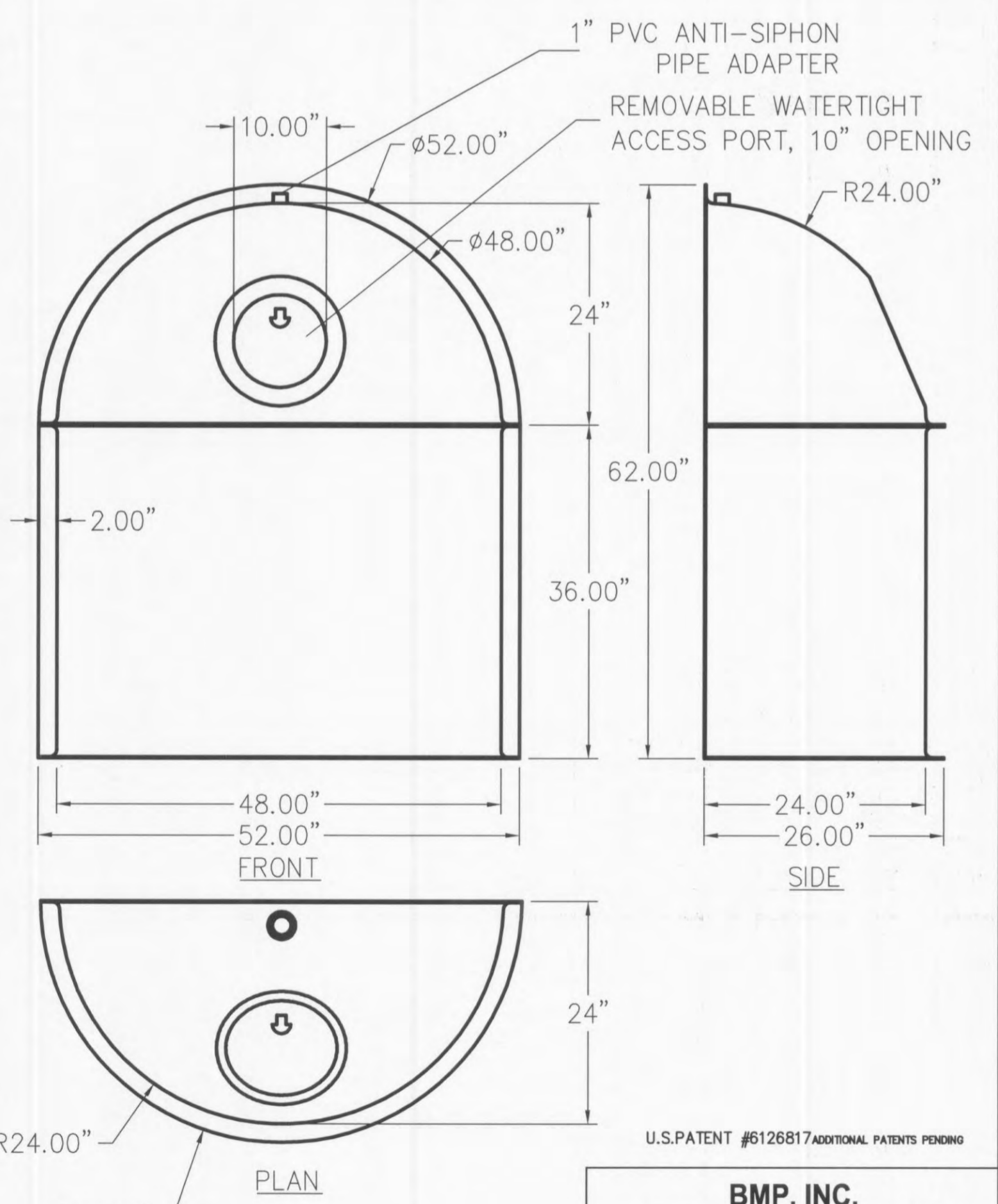
**HOOD SPECIFICATION FOR CATCH BASINS AND WATER QUALITY STRUCTURES**

DESCRIPTION	DATE	SCALE
OIL-DEBRIS HOOD SPECIFICATION AND INSTALLATION (TYPICAL)	09/17/99	NONE
DRAWING NUMBER	SC-IN	



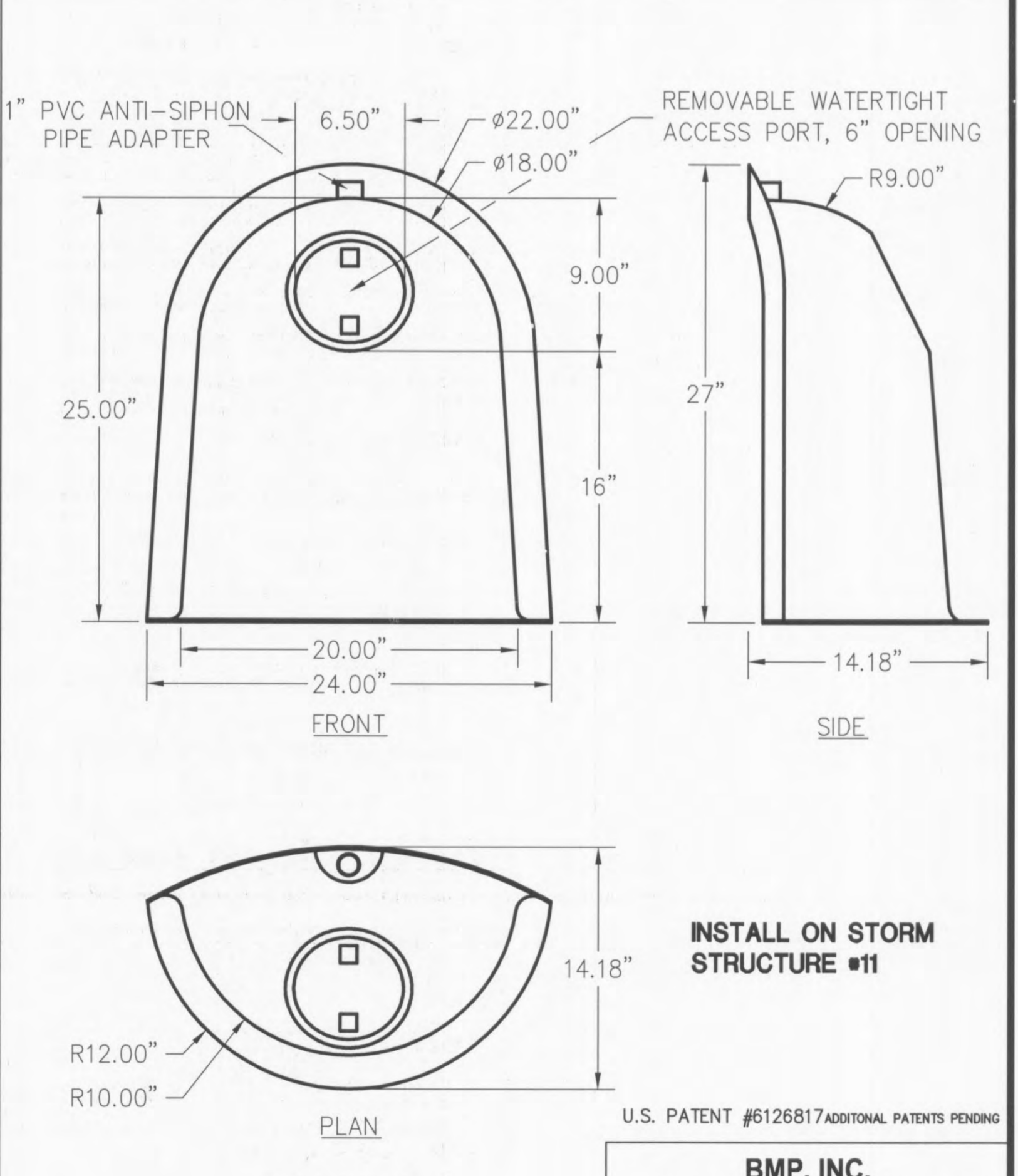
**BMP, INC.**  
 53 MT. ARCHER ROAD, LYME, CT. 06371  
 (800) 504-8008 FAX: (860)434-3195

DESCRIPTION	DATE	SCALE
36FTB SNOUT OIL & DEBRIS STOP	03/28/05	NONE
DRAWING NUMBER	36FTB	



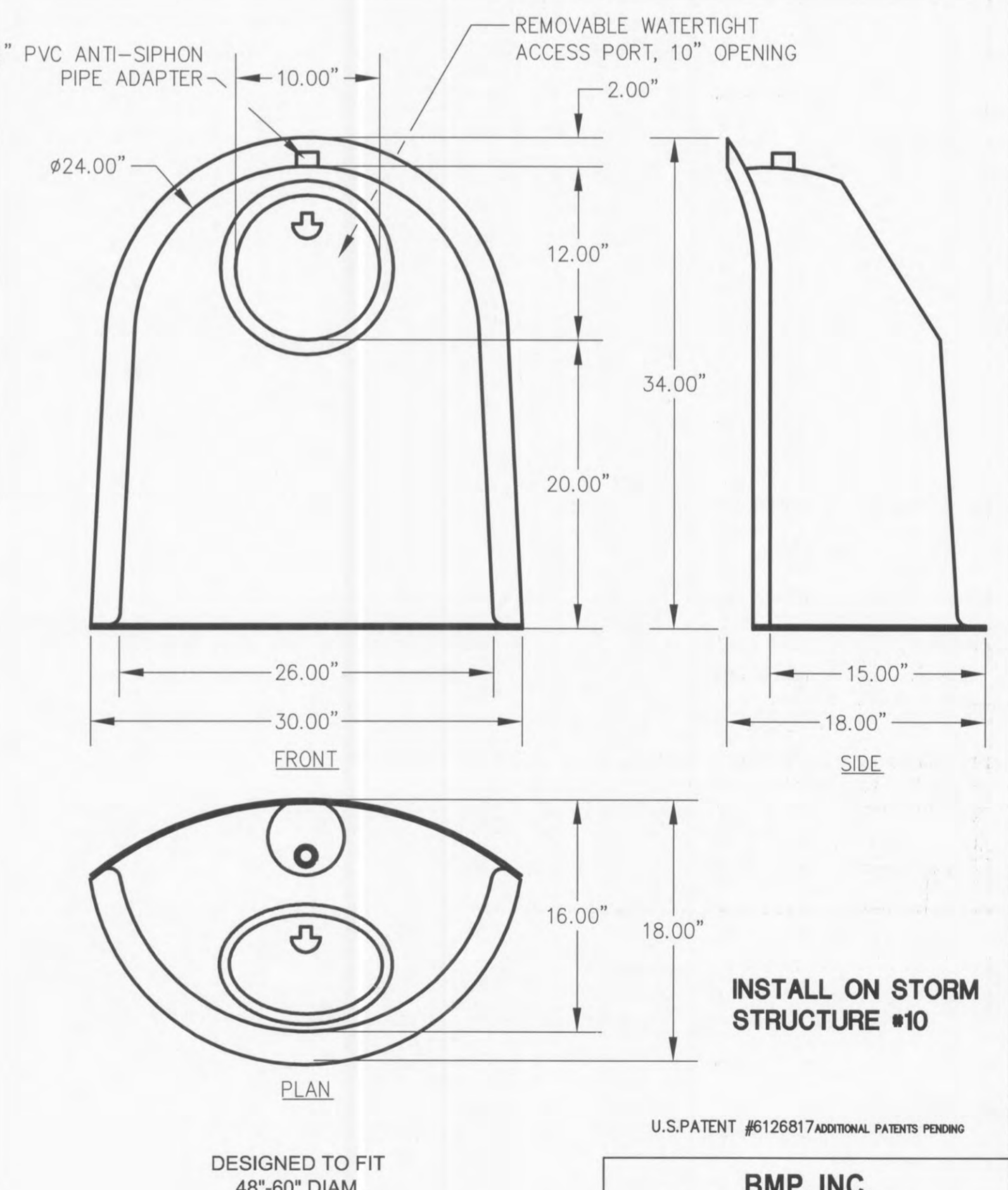
**BMP, INC.**  
 53 MT. ARCHER ROAD, LYME, CT. 06371  
 (800) 504-8008 FAX: (860)434-3195

DESCRIPTION	DATE	SCALE
48FTB SNOUT OIL & DEBRIS STOP	09/28/99	NONE
DRAWING NUMBER	48FTB	



**BMP, INC.**  
 53 MT. ARCHER ROAD, LYME, CT. 06371  
 (800) 504-8008 FAX: (860)434-3195

DESCRIPTION	DATE	SCALE
18R SNOUT OIL & DEBRIS STOP	09/06/99	NONE
DRAWING NUMBER	18R	



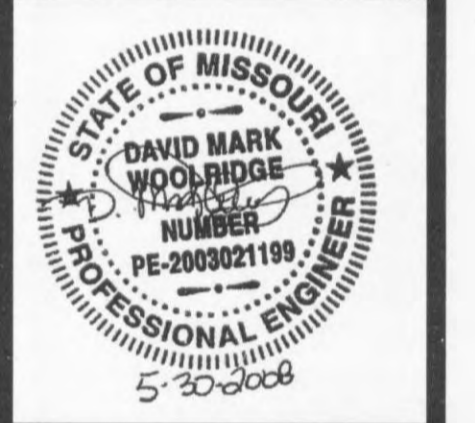
**BMP, INC.**  
 53 MT. ARCHER ROAD, LYME, CT. 06371  
 (800) 504-8008 FAX: (860)434-3195

DESCRIPTION	DATE	SCALE
24R SNOUT OIL & DEBRIS STOP	09/13/99	NONE
DRAWING NUMBER	24R	

PLANNING AND DEV. DEPT. FILE NO.: 00-109.02 DATE OF PLANNING APPROVAL: 09/06/2007

# GRADING PLAN DETAILS

**Wolverton & Associates**  
 Consulting Engineers + Land Surveyors  
 6746 Sugarloaf Parkway • Suite 100 • Duluth, Georgia 30097  
 Phone: (770) 447-9999 • Fax: (770) 447-9070  
 www.wolverton-essoc.com



PROPOSED EXPANSION TO WAL-MART #2616-04  
 O'FALLON POINTE CENTRE  
 O'FALLON, MISSOURI 63366  
 BY: WAL-MART REAL ESTATE BUSINESS TRUST  
 BENTONVILLE, AR.

REVISIONS	BY

DRAWN BY	CER
CHECKED BY	DMW
DATE	05/30/2008
SCALE	NOT TO SCALE
JOB No.	06-107
SHEET NUMBER	
<b>DE-2C</b>	
EDDS • 6162	