

# IRRIGATION SCHEDULE

SYMBOL	MANUFACTURER/MODEL/DESCRIPTION
	Hunter MP1000 w/ PRO5-04-CV Turf Spray 4" popup with check valve, Walla Walla rotary nozzle. M=Maroon adj arc 90 to 210, O=Olive 360 arc, on Hunter Pro-Spray body.
	Hunter MP2000 w/ PRO5-04-CV Turf Spray 4" popup with check valve, Walla Walla rotary nozzle. K=Black adj arc 90-210, G=Green adj arc 210-270, R=Red 360 arc, on Hunter Pro-Spray body.
	Hunter MP3000 w/ PRO5-04-CV Turf Spray 4" popup with check valve, Walla Walla rotary nozzle. B=Blue adj arc 90-210, Y=Yellow adj arc 210-270, A=Gray 360 arc, on Hunter Pro-Spray Body.
	Hunter MP Strip w/ PRO5-04-CV Turf Spray 4" popup with check valve, Walla Walla rotary nozzle. LST=Ivory left strip, SST=Brown side strip, RST=Copper right strip, on Hunter Pro-Spray body.

SYMBOL	MANUFACTURER/MODEL/DESCRIPTION
	Netafim LFCZ 10075-HF 1" valve, 3/4" filter and a high flow pressure regulating valve (3.5 - 17.6gpm).
	Netafim LVCZ 10075-LF 1" valve, 3/4" filter and a low flow pressure regulating valve (0.25 - 4.4gpm).
	Dnp Tubing Rain Bird XBS Dnp Black Stripe Tubing with green stripe

Area to Receive Dripline  
Netafim TLCV4-12-18  
Landscape Dripperline with 0.4gph emitters at 12" o.c. with check valve, pressure compensation, 14.7psi min. to 50psi max. Dripperline laterals spaced at 18" apart, with emitters offset for triangular pattern.

Area to Receive Dripline  
Netafim TLCV4-18-18  
Landscape Dripperline with 0.4gph emitters at 18" o.c. with check valve, pressure compensation, 14.7psi min. to 50psi max. Dripperline laterals spaced at 18" apart, with emitters offset for triangular pattern.

SYMBOL	MANUFACTURER/MODEL/DESCRIPTION
	Hunter PGV-151-AS-R, 201-AS-R Electric Remote Control Valve, plastic, with globe/angle valve, flow control, DC latching solenoid, Accu-Set pressure regulator, purple handle.
	Hunter PGV-100A-S-AS Electric Remote Control Valve, 1" plastic, with angle valve, slip x slip, Accu-Set pressure regulator.

Hunter ICC-1200-M  
Electromechanical Controller, 12 stations, outdoor model, with metal cabinet

Hunter RFC  
Rain and freeze sensor, with conduit installation, mount as noted

Febco 825Y 2"  
Reduced Pressure Backflow Preventer

Febco 825Y 2"  
Reduced Pressure Backflow Preventer

Calsense FM-2  
2" Flow Meter

Calsense Central Controller - ET2000e-32-WEN-G

Point of Connection 2"

Point of Connection 2"

Irrigation Lateral Line: PVC Class 200  
Only lateral transition pipe sizes 1 1/4" and above are indicated on the plan, with all others being 1" in size.

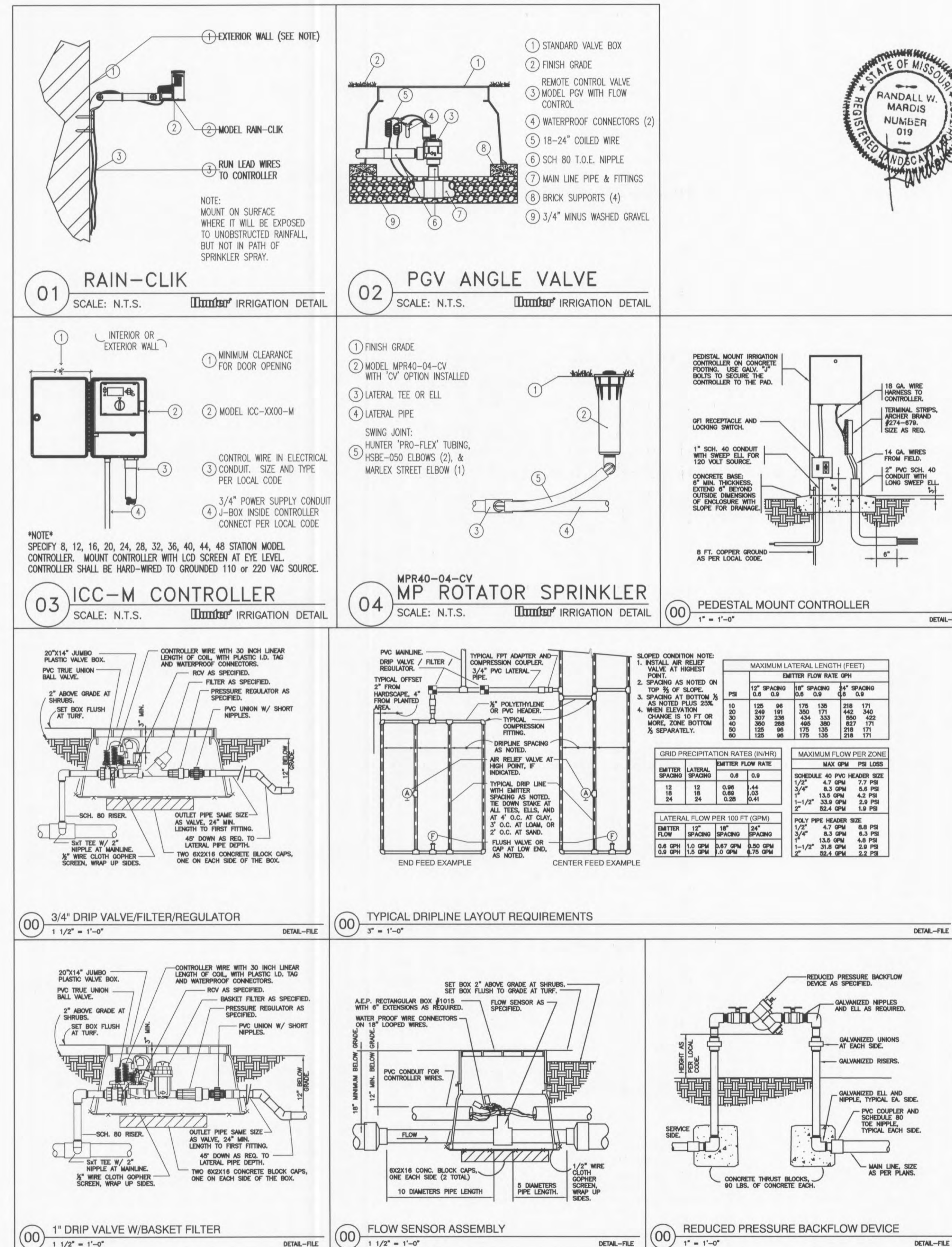
Irrigation Mainline: 2-1/2" PVC Class 200

Pipe Sleeve: PVC Schedule 40  
Typical pipe sleeve for irrigation pipe. Pipe sleeve size shall allow for irrigation piping and their related couplings to easily slide through sleeving material. Extend sleeves 18 inches beyond edges of paving or construction.

Valve Callout  
# — Valve Number  
# — Valve Flow  
# — Valve Size

## NOTES:

- System is designed for 60 GPM @ 80 PSI. Contractor to field verify actual conditions.
- Exact tap, backflow and controller location to be coordinated with owner.
- All wiring from Controller to Valve is to be 14 ga. copper.
- Electric will need to be provided at the controller location.
- All irrigation heads must be installed and adjusted to ensure no overspray occurs onto walks or pavement.



STATE OF MISSOURI  
REGISTERED LANDSCAPE ARCHITECT  
RANDALL W. MARDIS  
NUMBER 019  
5/27/08

REVISIONS	BY
AUGUST 22, 2007	RWM
DEC. 6, 2007	RWM
APRIL 28, 2008	RWM
MAY 27, 2008	RWM

landscape TECHNOLOGIES  
(636) 928-1260  
(636) 928-4563  
67 Jacobs Creek Drive  
St. Charles, Missouri 63304

IRRIGATION PLAN FOR THE PROPOSED  
**O'Fallon Pointe**  
O'FALLON, MISSOURI

DRAWN RWM  
CHECKED RWM/GJB  
DATE JUNE 11, 2007  
SCALE 1"=20'-0"  
JOB No. 2006-229  
SHEET

**IR-4**  
OF FOUR SHEETS