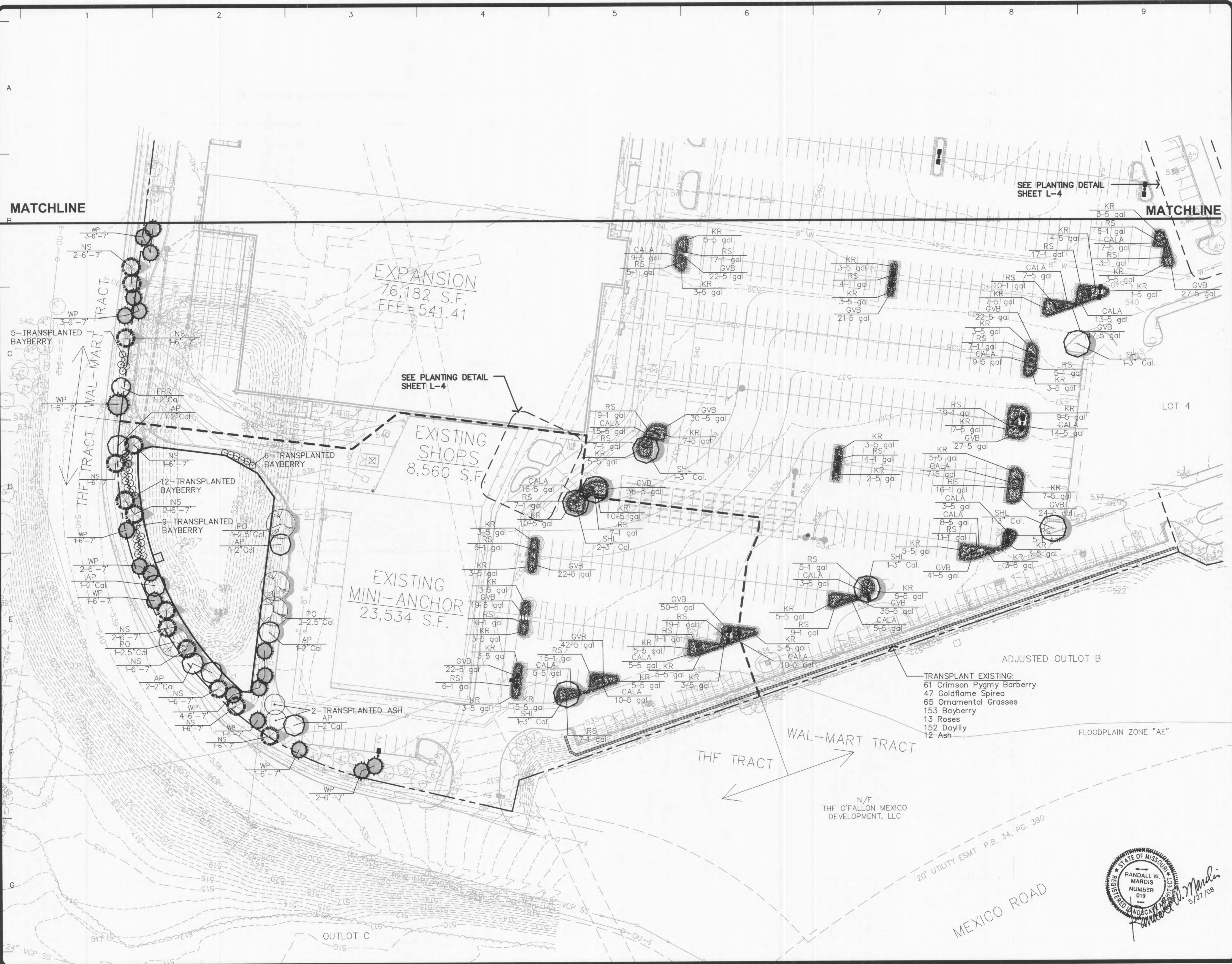


REVISIONS	BY
DEC. 22, 2007	RWM
AUG. 6, 2007	RWM
APRIL 28, 2008	RWM
MAY 27, 2008	RWM



PLANTING PLAN FOR THE PROPOSED
O'Fallon Pointe
 O'FALLON, MISSOURI

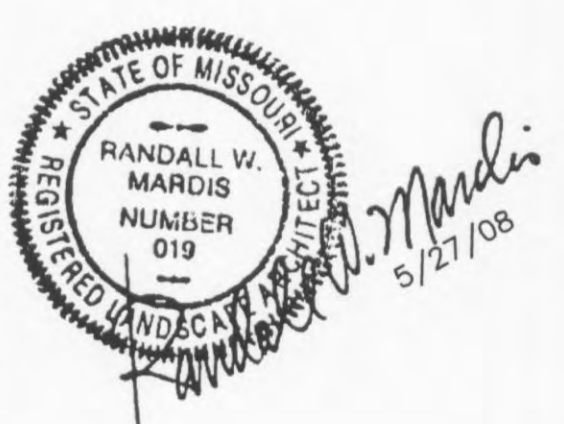
DRAWN	RWM
CHECKED	RWM/GVB
DATE	JUNE 11, 2007
SCALE	1"=40'-0"
JOB No.	2006-229
SHEET	L-3
OF FOUR SHEETS	



SEE PLANTING DETAIL SHEET L-4

SEE PLANTING DETAIL SHEET L-4

- TRANSPLANT EXISTING:
- 61 Crimson Pygmy Barberr
 - 47 Goldflame Spirea
 - 65 Ornamental Grasses
 - 153 Bayberry
 - 13 Roses
 - 152 Daylily
 - 12 Ash



20' UTILITY ESMT P.B. 34, PG. 390

MEXICO ROAD

N/F THE O'FALLON MEXICO DEVELOPMENT, LLC

WAL-MART TRACT

THE TRACT

FLOODPLAIN ZONE "AE"

ADJUSTED OUTLOT B

OUTLOT C

MATCHLINE

MATCHLINE

EXPANSION
 76,182 S.F.
 EEE=541.41

EXISTING SHOPS
 8,560 S.F.

EXISTING MINI-ANCHOR
 23,534 S.F.

5-TRANSPLANTED BAYBERRY

12-TRANSPLANTED BAYBERRY

9-TRANSPLANTED BAYBERRY

2-TRANSPLANTED ASH

WAL-MART TRACT

THE TRACT

FLOODPLAIN ZONE "AE"

ADJUSTED OUTLOT B

OUTLOT C

MATCHLINE

MATCHLINE

EXPANSION
 76,182 S.F.
 EEE=541.41

EXISTING SHOPS
 8,560 S.F.

EXISTING MINI-ANCHOR
 23,534 S.F.

5-TRANSPLANTED BAYBERRY

12-TRANSPLANTED BAYBERRY

9-TRANSPLANTED BAYBERRY

2-TRANSPLANTED ASH

WAL-MART TRACT

THE TRACT

FLOODPLAIN ZONE "AE"

ADJUSTED OUTLOT B

OUTLOT C