

REVISIONS	BY
AUGUST 22, 2007	RWM
DEC. 6, 2007	RWM
APRIL 28, 2008	RWM
MAY 27, 2008	RWM

**landscape TECHNOLOGIES**  
 67 Jacobs Creek Drive  
 St. Charles, Missouri 63304  
 (636) 928-1250  
 Fax: (636) 928-4563

PLANTING PLAN FOR THE PROPOSED  
**O'Fallon Pointe**  
 O'FALLON, MISSOURI

DRAWN  
 RWM  
 CHECKED  
 RWM/CJB  
 DATE  
 JUNE 11, 2007  
 SCALE  
 1"=20'-0"  
 JOB No.  
 2006-229  
 SHEET  
**L-4**  
 OF FOUR SHEETS

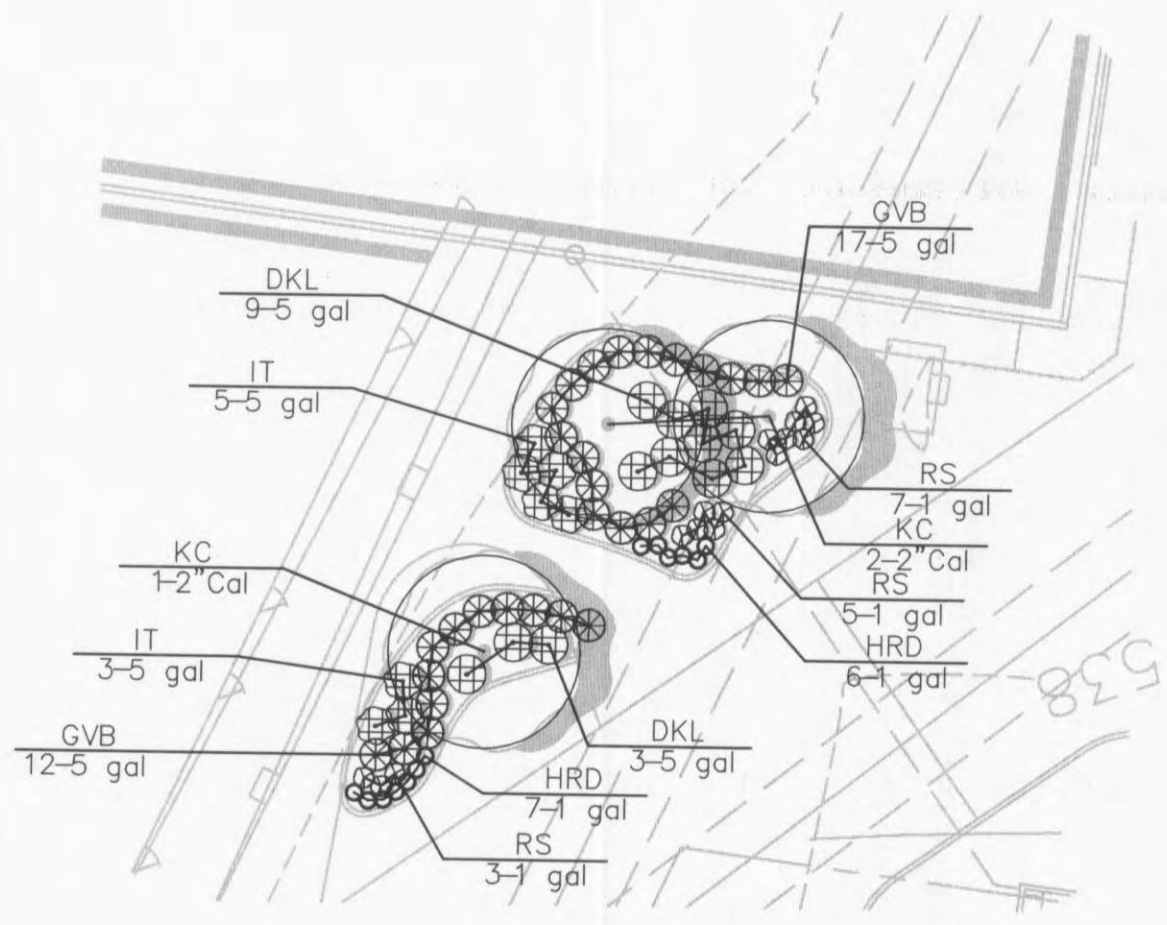
## PLANT SCHEDULE

TREES	BOTANICAL	COMMON	SIZE	QTY
PAPM	Acer griseum	Paperbark Maple	1.5" Cal	5
PO	Quercus palustris	Pin Oak	2.5" Cal	9
SHL	Gleditsia triacanthos 'Skyline'	'Skyline' Locust	3" Cal.	14
EVERGREEN TREES	BOTANICAL	COMMON	SIZE	QTY
NS	Picea abies	Norway Spruce	6'-7'	21
WP	Pinus strobus	White Pine	6'-7'	27
FLOWERING TREES	BOTANICAL	COMMON	SIZE	QTY
AP	Pyrus calleryana 'Aristocrat' TM	Aristocrat Flowering Pear	2" Cal	7
FPR	Cercis canadensis 'Forest Pansy' TM	Forest Pansy Redbud	2" Cal	3
KC	Prunus serrulata 'Kwanzan'	Kwanzan Cherry	2" Cal	3
SHRUBS	BOTANICAL	COMMON	SIZE	QTY
CH	Ilex meserveae 'China Boy/Girl' TM	China Boy/Girl Holly	5 gal	27
DKL	Syringa meyeri 'Palibin'	Dwarf Korean Lilac	5 gal	12
GVB	Buxus 'Green Velvet'	Green Velvet Boxwood	5 gal	932
IT	Itea virginica 'Henry's Garnet'	Henry's Garnet Itea	5 gal	8
ANNUALS/PERENNIALS	BOTANICAL	COMMON	SIZE	QTY
HRD	Hemerocallis hybrid 'Happy Returns'	Happy Returns Daylily	1 gal	70
RS	Perovskia atriplicifolia	Russian Sage	1 gal	448
GRASSES	BOTANICAL	COMMON	SIZE	QTY
CALA	Calamagrostis acutifolia 'Karl Foerster'	Foerster's Reed Grass	5 gal	249
MG	Miscanthus sinensis 'Gracillimus'	Maiden Grass	5 gal	25
ROSES	BOTANICAL	COMMON	SIZE	QTY
KR	Rosa Knockout	Knockout Rose	5 gal	300

### LANDSCAPE NOTES:

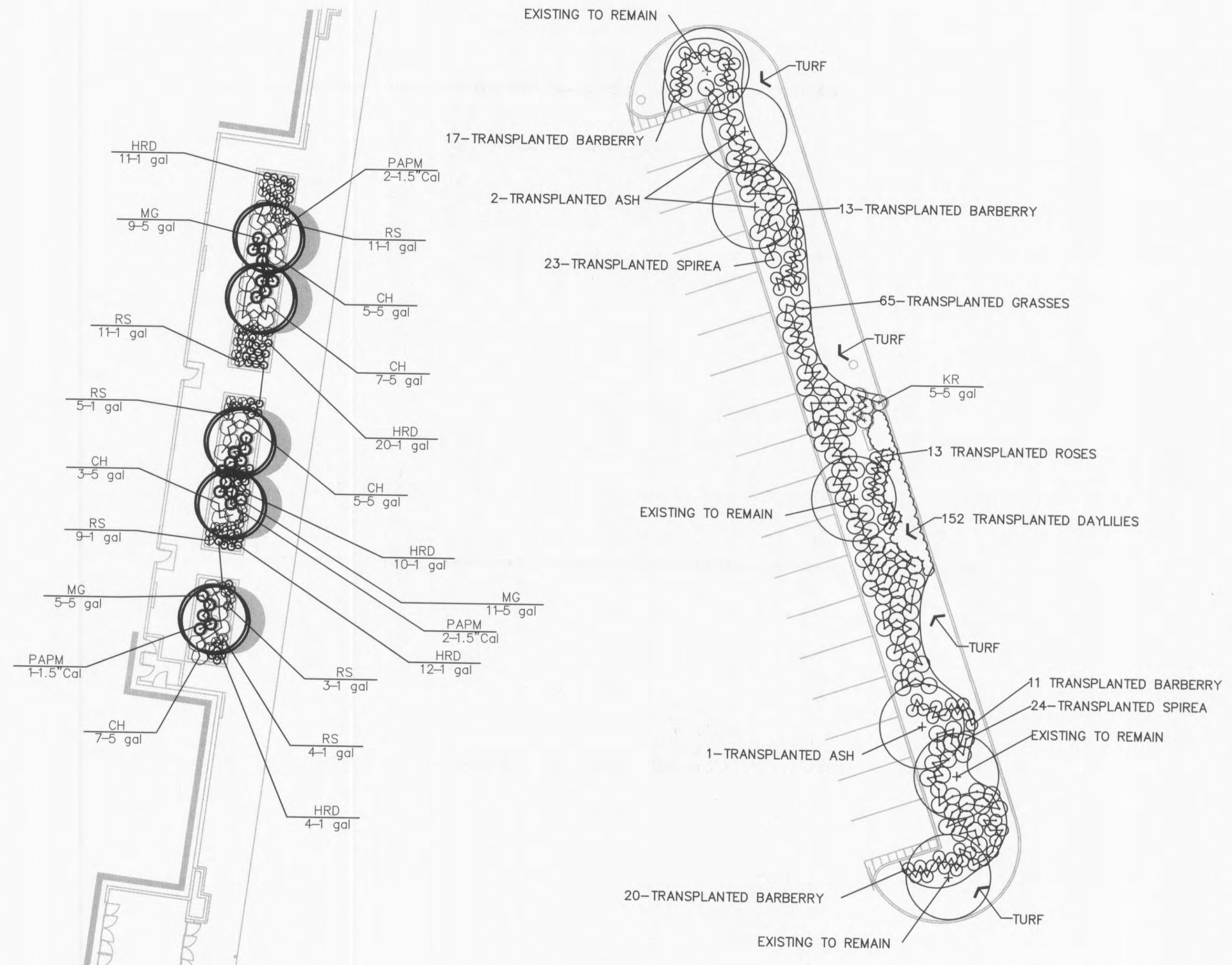
- GENERAL:**
- All natural vegetation shall be maintained where it does not interfere with construction or the permanent plan of operation. Every effort possible shall be made to protect existing structures or vegetation from damage due to equipment usage. Contractor shall at all times protect all materials and work against injury to public.
  - The landscape contractor shall be responsible for any coordination with other site related work being performed by other contractors. Refer to architectural drawings for further coordination of work to be done.
  - Underground facilities, structures and utilities must be considered approximate only. There may be others not presently known or shown. It shall be the landscape contractor's responsibility to determine or verify the existence of and exact location of the above (Call 1-800-DIG-RITE).
  - Plant material are to be planted in the same relationship to grade as was grown in nursery conditions. All planting beds shall be cultivated to 6" depth minimum and graded smooth immediately before planting of plants. Plant groundcover to within 12" of trunk of trees or shrubs planted within the area.
  - It shall be the landscape contractor's responsibility to:
    - Verify all existing and proposed features shown on the drawings prior to commencement of work.
    - Report all discrepancies found with regard to existing conditions or proposed design to the landscape architect immediately for a decision.
    - Stake the locations of all proposed plant material and obtain the approval of the owner's representative or landscape architect prior to installation.
  - Items shown on this drawing take precedence over the material list. It shall be the landscape contractor's responsibility to verify all quantities and conditions prior to implementation of this plan. No substitutions of types or size of plant materials will be accepted without written approval from the landscape architect.
  - Provide single-stem trees unless otherwise noted in plant schedule.
  - All plant material shall comply with the recommendations and requirements of ANSI Z60.1 "American Standards for Nursery Stock".
  - It shall be the contractor's responsibility to provide for inspection of the plant material by the Landscape Architect prior to acceptance. Plants not conforming exactly to the plant list will not be accepted and shall be replaced at the landscape contractor's expense.
  - All plant material to be transplanted shall be transplanted according to guidelines set by AAN standards. Transplanted material will not be guaranteed by the landscape contractor.
  - All disturbed lawn areas to be sodded with a high quality Turf-Type fescue Lawn areas shall be unconditionally warranted for a period of ninety (90) days from date of final acceptance. Bare areas more than one square foot per any 50 square feet shall be replaced.

STATE OF MISSOURI  
 LANDSCAPE ARCHITECT  
 RANDALL W. MARDIS  
 NUMBER 019  
 5/27/08



### STOREFRONT PLANTERS @ FASHION BUG

SCALE: 1"=20'-0"



### ENTRANCE ISLAND PLANTING

SCALE: 1"=20'-0"

### STOREFRONT PLANTERS @ WAL MART

SCALE: 1"=20'-0"