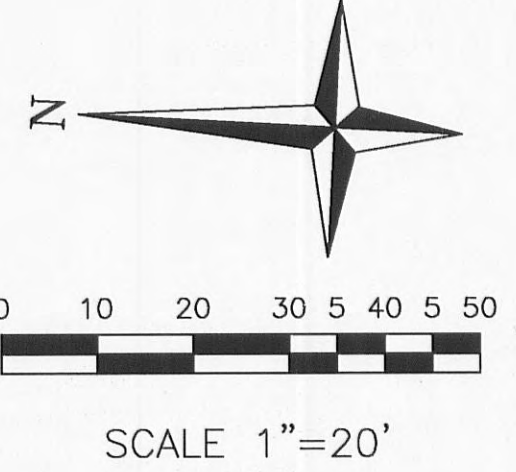
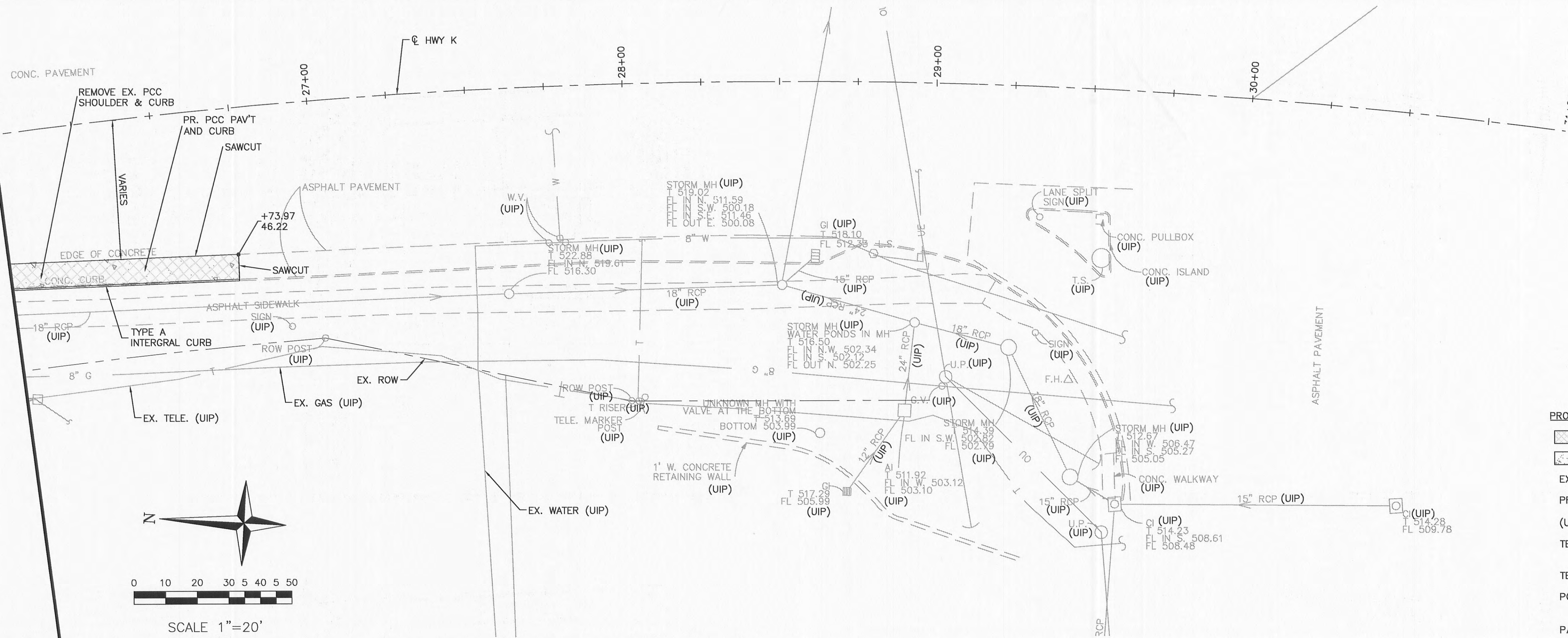

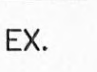


MATCHLINE 26+00



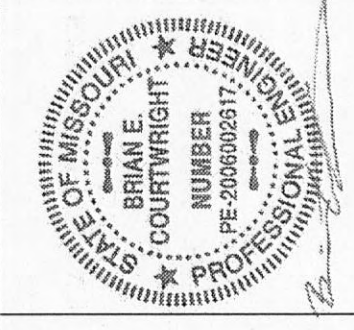
- PROPOSED LEGEND**
-  REMOVAL ITEM
 -  PCC ITEM
 - EX. EXISTING
 - PR. PROPOSED
 - (UIP) USE IN PLACE
 - TBR&R TO BE REMOVED AND RELOCATED
 - TBR TO BE REMOVED
 - PCC PORTLAND CEMENT CONCRETE
 - PAVT PAVEMENT

SHEET NO.
4

Job No. 157-07
 Date: 1/16/08
 Scale: 1"=20'
 Drawn by: BEC
 Design by: BEC
 Approved by: CMB
 File Name: PLN

REVISIONS

WAL*MART
 Save money. Live better.
 PROPOSED EXPANSION TO WAL-MART #2616-04



CBB Crawford, Bunte, Brammeier
 Traffic and Transportation Engineers
 St. Louis, Missouri / Glen Carbon, Illinois
 314-878-6644 618-656-2612
 Fax: 314-878-5576 E-Mail: cbb@cbbtraffic.com

ROADWAY
 PLAN
 MO ROUTE K
 @ COMMERCIAL ENTRANCE
 O'FALLON, MISSOURI