

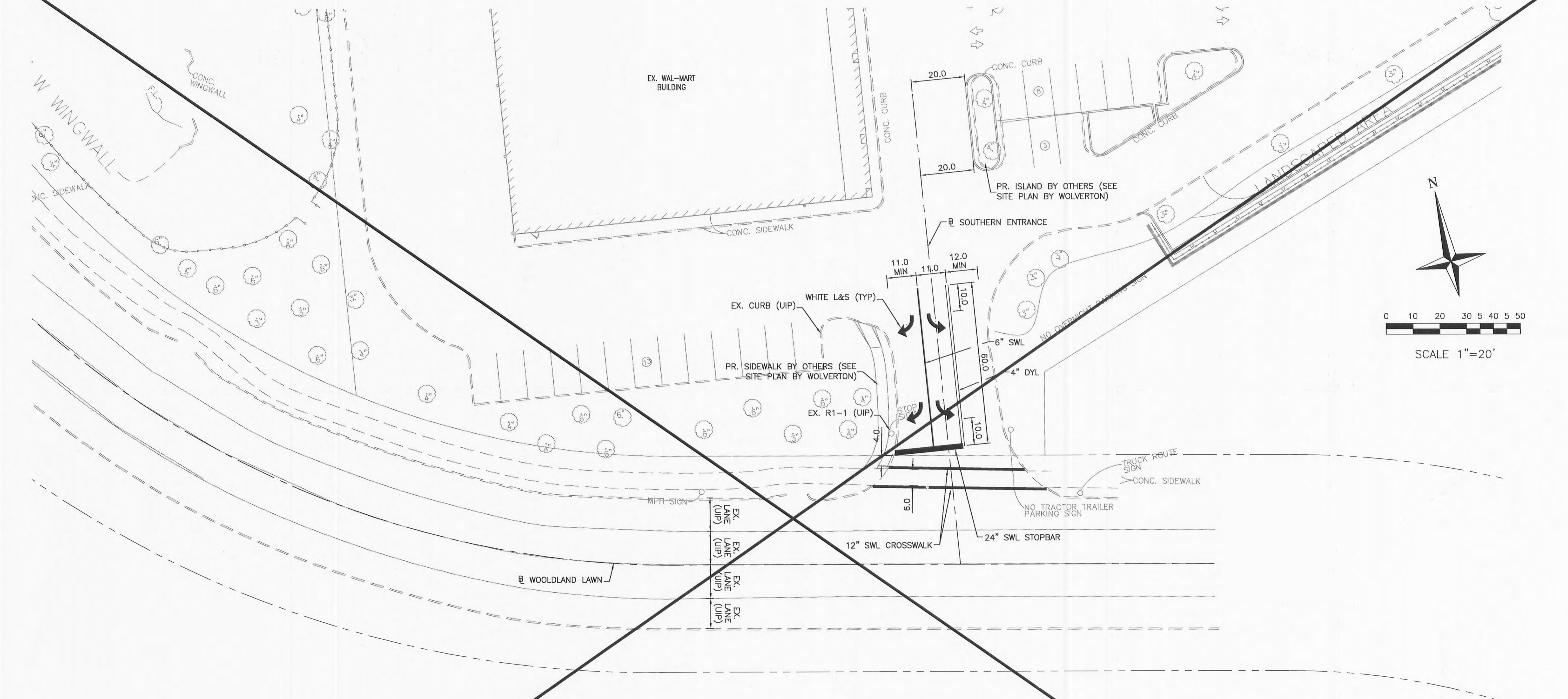
REVISIONS

WAL-MART
Save money. Live better.
PROPOSED EXPANSION TO WAL-MART #2616-04



CBB Crawford, Bunte, Brammeier
Traffic and Transportation Engineers
St. Louis, Missouri/Glen Carbon, Illinois
314-878-6644 618-656-2612
Fax: 314-878-5876 E-Mail: cbb@cbbtraffic.com

ROADWAY
SOUTHERN ENT. MARKING
MO ROUTE K
@ COMMERCIAL ENTRANCE
O'FALLON, MISSOURI



- NOTES
- 1) ALL CONSTRUCTION AND MATERIALS SHALL BE IN ACCORDANCE WITH THE CURRENT MISSOURI STANDARD SPECIFICATIONS FOR HIGHWAY CONSTRUCTION AND MISSOURI STANDARD PLANS FOR HIGHWAY CONSTRUCTION.
 - 2) PAVEMENT MARKINGS SHALL CONFORM TO THE MANUAL ON UNIFORM TRAFFIC CONTROL DEVICES (MUTCD).
 - 3) EXISTING PAVEMENT MARKINGS WHICH CONFLICT WITH THE PROPOSED STRIPING SHALL BE REMOVED AS DIRECTED BY THE ENGINEER.
 - 4) STOPBARS, YELDBARS AND SYMBOLS SHALL BE HEAT TAPE (3M) OR EPOXY. ALL LANE LINES SHALL BE WATERBORNE PAINT STRIPING.
 - 5) ALL ARROWS, WORDS AND SYMBOLS SHALL BE WHITE UNLESS OTHERWISE SPECIFIED.
 - 6) REFER TO PLAN SHEETS FOR ADDITIONAL DIMENSIONS.
 - 7) STATIONING ON STOPBARS IS TO THE CENTERLINE OF THE STRIPE.

PAVEMENT MARKING LEGEND

SWL	-	SOLID WHITE LINE
DYL	-	DOUBLE YELLOW LINE
EX	-	EXISTING
L&S	-	LETTER & SYMBOLS
(UIP)	-	USE IN PLACE
TBR&R	-	TO BE REMOVED AND RELOCATED

OMITTED
SEE SITE PLAN BY WOLVERTON & ASSOC.