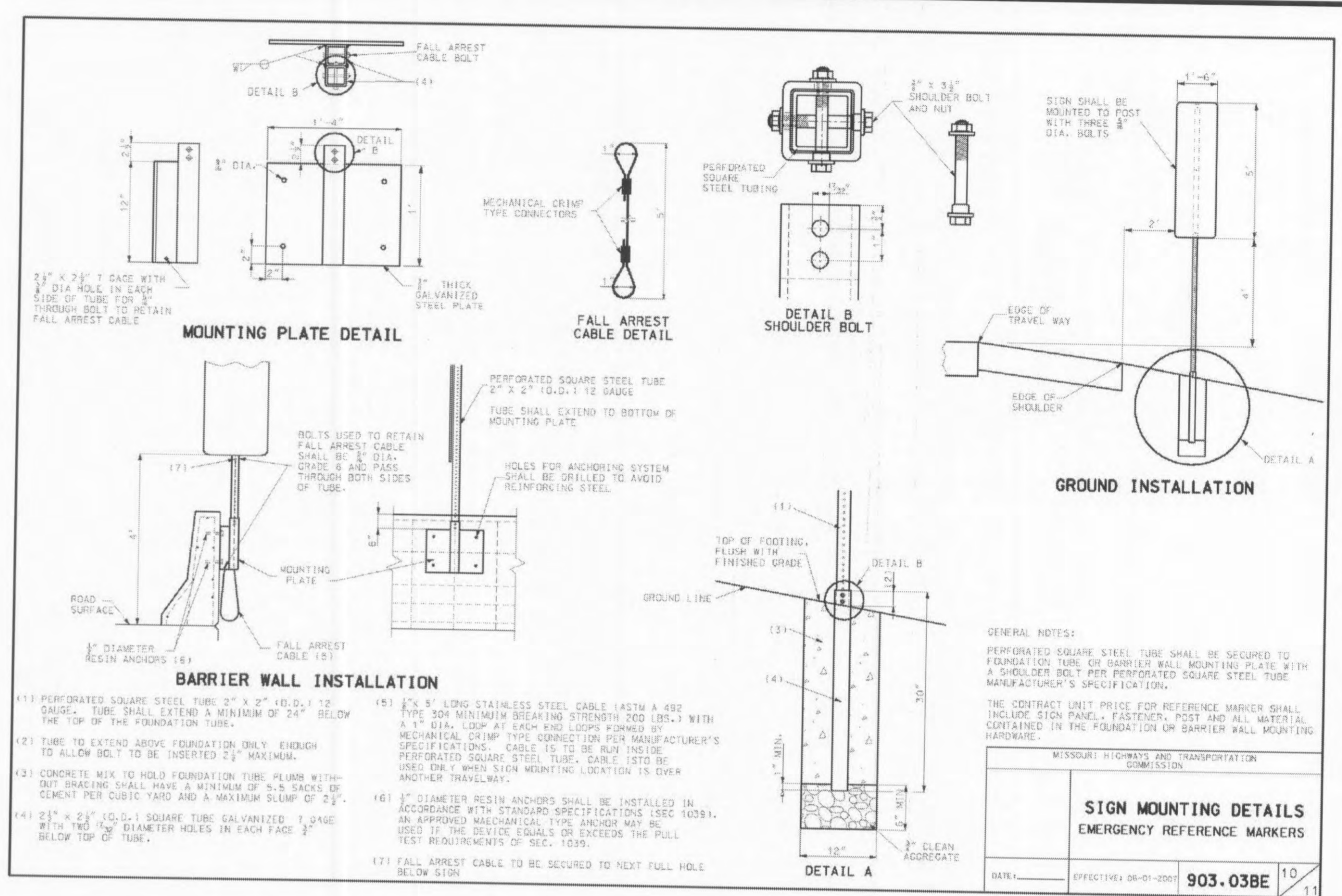
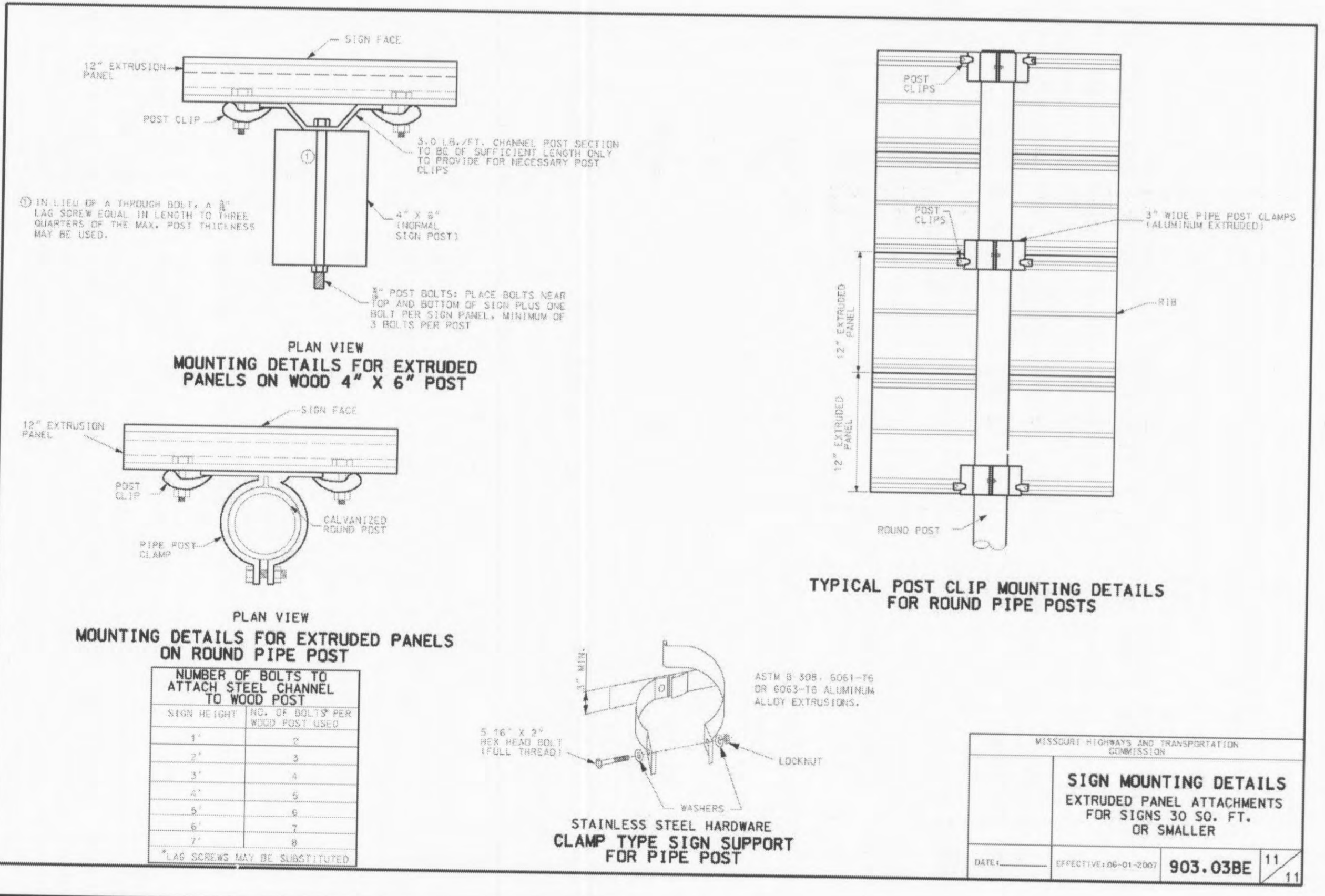


MISSOURI HIGHWAYS AND TRANSPORTATION COMMISSION			
SIGN MOUNTING DETAILS			
CHANNEL POST DELINEATORS			
DATE: _____	EFFECTIVE 06-01-2007	903.03BE	9/11



MISSOURI HIGHWAYS AND TRANSPORTATION COMMISSION			
SIGN MOUNTING DETAILS			
EMERGENCY REFERENCE MARKERS			
DATE: _____	EFFECTIVE 06-01-2007	903.03BE	10/11



MISSOURI HIGHWAYS AND TRANSPORTATION COMMISSION			
SIGN MOUNTING DETAILS			
EXTRUDED PANEL ATTACHMENTS			
FOR SIGNS 30.50 FT. OR SMALLER			
DATE: _____	EFFECTIVE 06-01-2007	903.03BE	11/11

FOR INFORMATION ONLY

IT IS THE CONTRACTOR'S RESPONSIBILITY TO OBTAIN THE CURRENT EDITION OF MoDOT'S STANDARD DRAWINGS

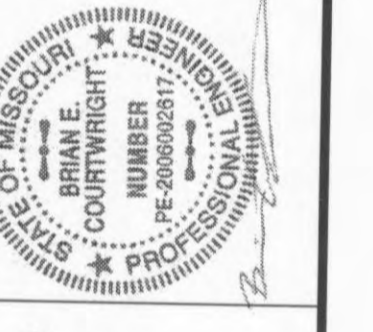
SHEET NO.
24

Job No. 157-07
Date: 1/16/08
Scale: NTS
Drawn by: BEC
Design by: BEC
Approved by: CMB
File Name: PLN

REVISIONS	

WAL-MART
Save money. Live better.SM

PROPOSED EXPANSION TO WAL-MART #2616-04



CBB Crawford, Bunte, Brammeier
Traffic and Transportation Engineers

St. Louis, Missouri / Glen Carbon, Illinois
314-878-6644 618-656-2612
Fax: 314-878-5876 E-Mail: cbb@cbbtraffic.com

ROADWAY
MoDOT STANDARDS
MO ROUTE K
© MEXICO ROAD
O'FALLON, MISSOURI