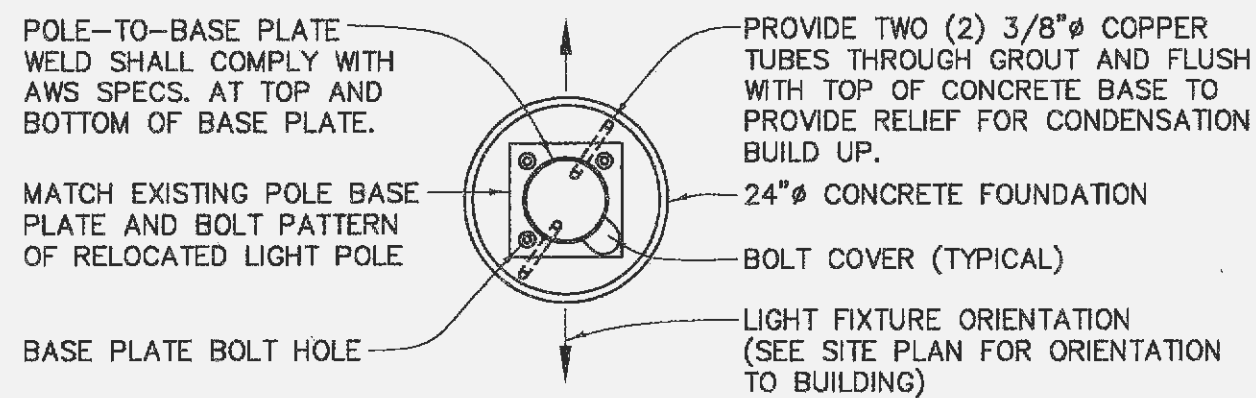
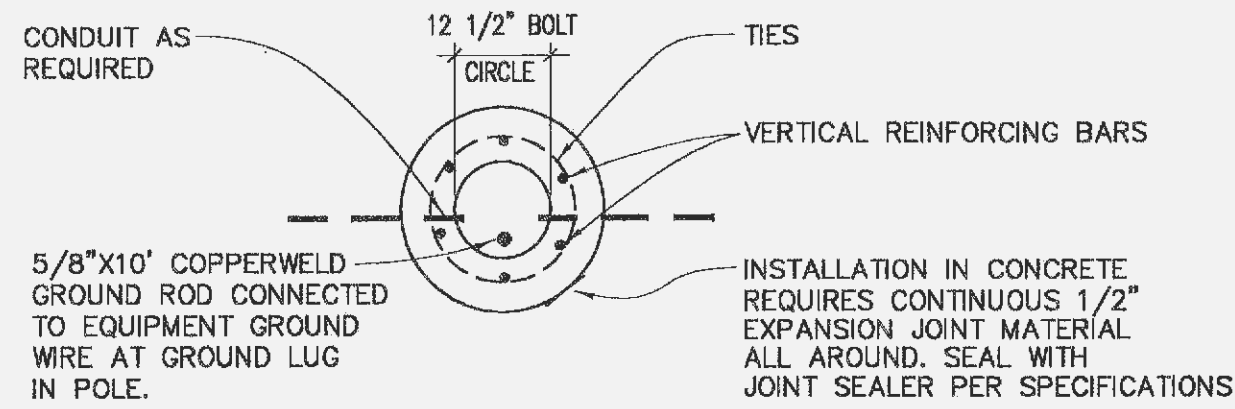


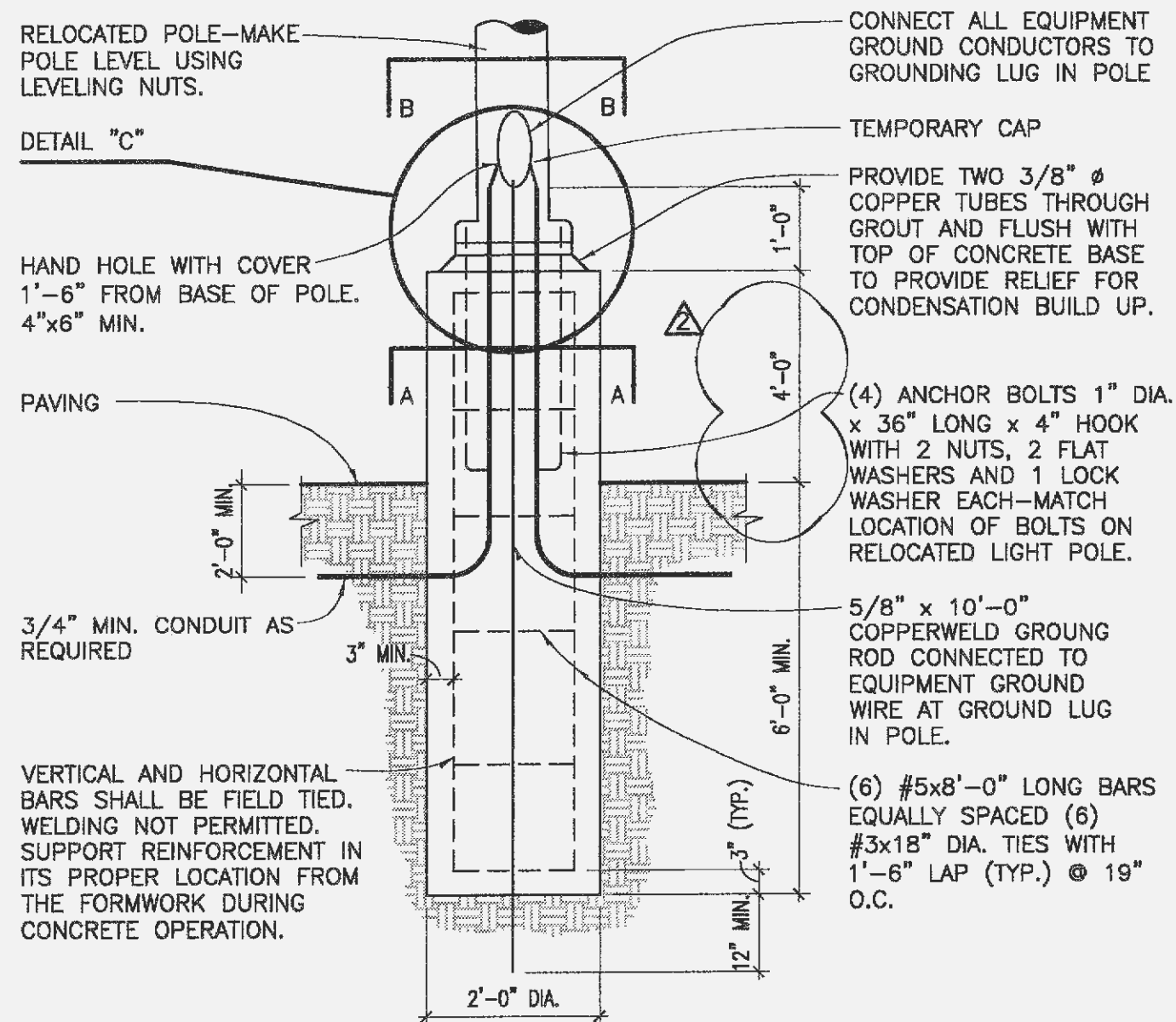
DETAIL "C"



SECTION "B-B"

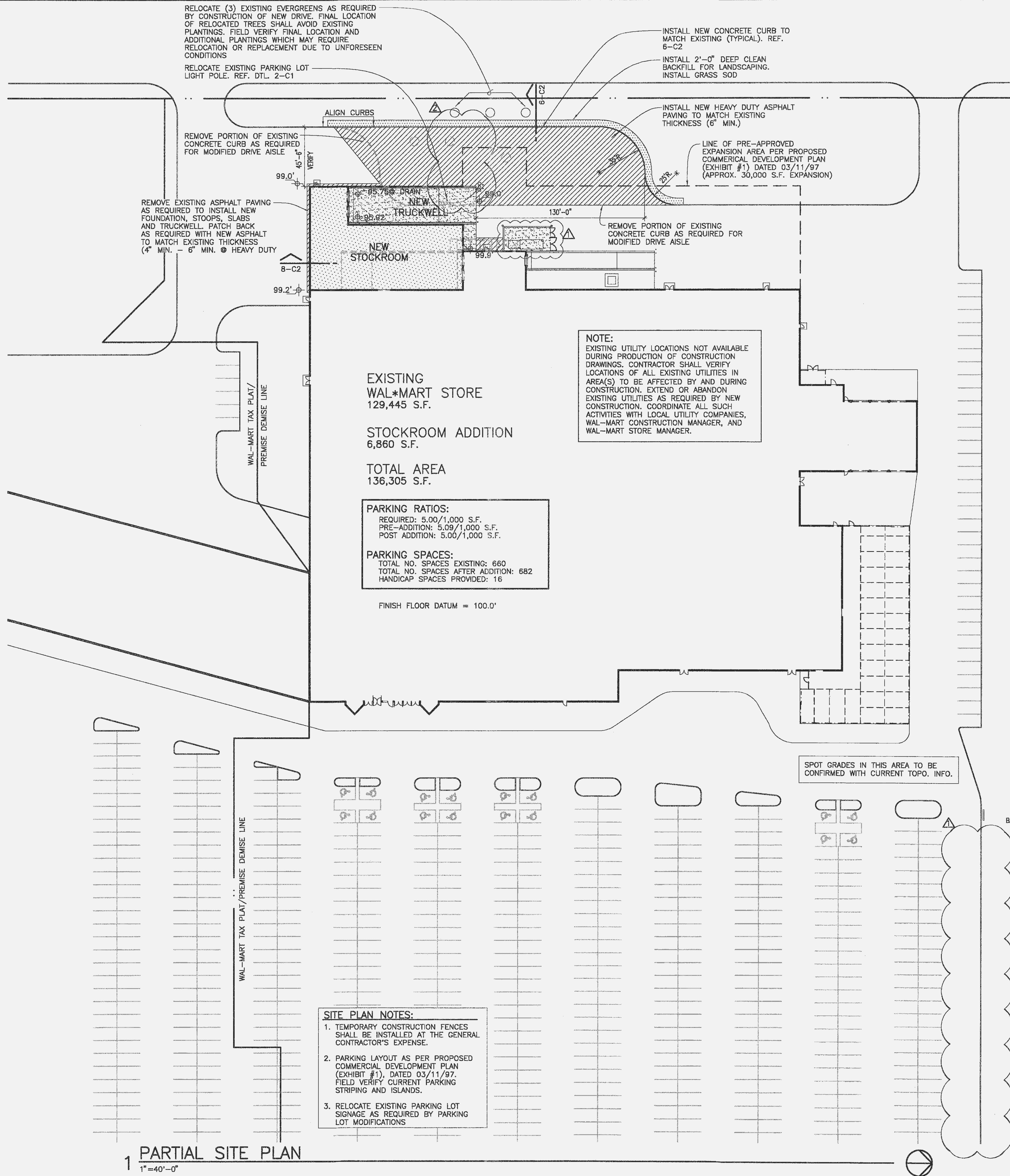


SECTION "A-A"



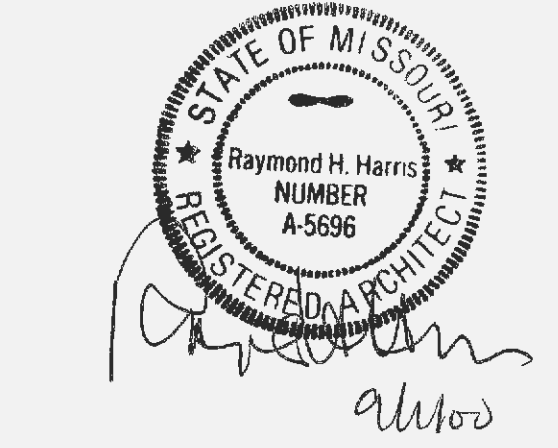
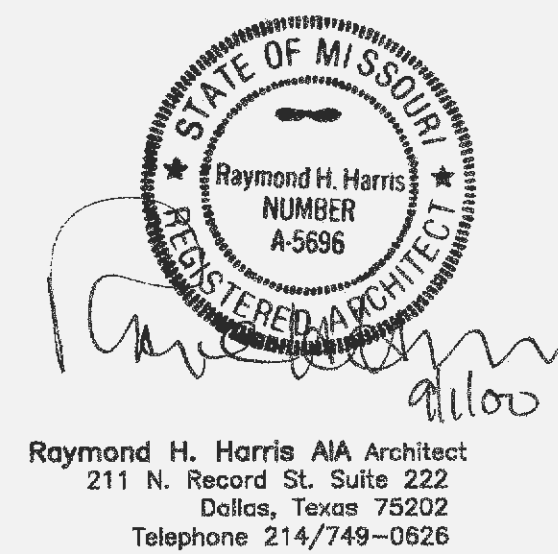
- NOTES:
- 3500 PSI MIN. 28 DAY COMPRESSIVE STRENGTH CONCRETE WITH GRADE 60 REINFORCING STEEL.
  - IF WATER IS PRESENT IN HOLE, REMOVE BEFORE POURING CONCRETE.
  - FOUNDATION EXCAVATION SHALL BE BY 24" AUGER IN UNDISTURBED OR PROPERLY COMPACTED FILL PER SPECIFICATIONS.
  - FOUNDATION SHALL HAVE A MINIMUM ALLOWABLE END BEARING OF 2000 PSF.
  - FOUNDATION HAS BEEN DESIGNED FOR A COHESIVE SOIL BASED ON A MINIMUM COHESIVE VALUE OF 1000 PSF.
  - FOUNDATION HAS BEEN DESIGNED FOR A GRANULAR SOIL BASED ON A MINIMUM LATERAL SOIL PRESSURE OF 1000 PSF. UTILIZING AASHTO FIGURE 1.8.2C(4), "EMBEDMENT OF POSTS WITH OVERTURNING LOADS."
  - EXPOSED CONCRETE AND GROUT SHALL BE PAINTED TRAFFIC YELLOW.
  - DETAIL FOR 39' POLE WITH MAX. FIXTURE EPA. 4.8 SQ. FT.

2 TYPICAL LIGHTING POLE BASE  
N.T.S.



1 PARTIAL SITE PLAN  
1" = 40'-0"

- SITE PLAN NOTES:
- TEMPORARY CONSTRUCTION FENCES SHALL BE INSTALLED AT THE GENERAL CONTRACTOR'S EXPENSE.
  - PARKING LAYOUT AS PER PROPOSED COMMERCIAL DEVELOPMENT PLAN (EXHIBIT #1), DATED 03/11/97. FIELD VERIFY CURRENT PARKING STRIPING AND ISLANDS.
  - RELOCATE EXISTING PARKING LOT SIGNAGE AS REQUIRED BY PARKING LOT MODIFICATIONS



6,860 S.F.  
**WAL\*MART**  
STOCKROOM ADDITION

STORE # 2616

O'FALLON,  
MO

WAL\*MART STORES, INC.  
CONSTRUCTION DEPT. 8702  
2001 SOUTHEAST 10th STREET  
BENTONVILLE, AR 72712-6489

Sheet Contents:  
PARTIAL SITE PLAN

Drawn By: BB  
Checked By: RH  
Revisions:

- REVISION #1-11 AUGUST 2000  
CITY REVIEW COMMENTS
- REVISION #2-1 SEPTEMBER 2000  
CITY REVIEW COMMENTS

ALL QUESTIONS FROM GENERAL CONTRACTORS RELATED TO THE BIDDING OF THIS PROJECT OR THE WORK INVOLVED SHALL BE DIRECTED TO:  
WAL\*MART STORES, INC.  
CONSTRUCTION DEPT 8702  
2001 SOUTHEAST 10th STREET  
BENTONVILLE, AR 72712-6489  
TELEPHONE: (501) 273-4864

Project Number: 00615  
Date: 30 JUNE 2000  
Sheet: 2 of 17 Sheets

C1