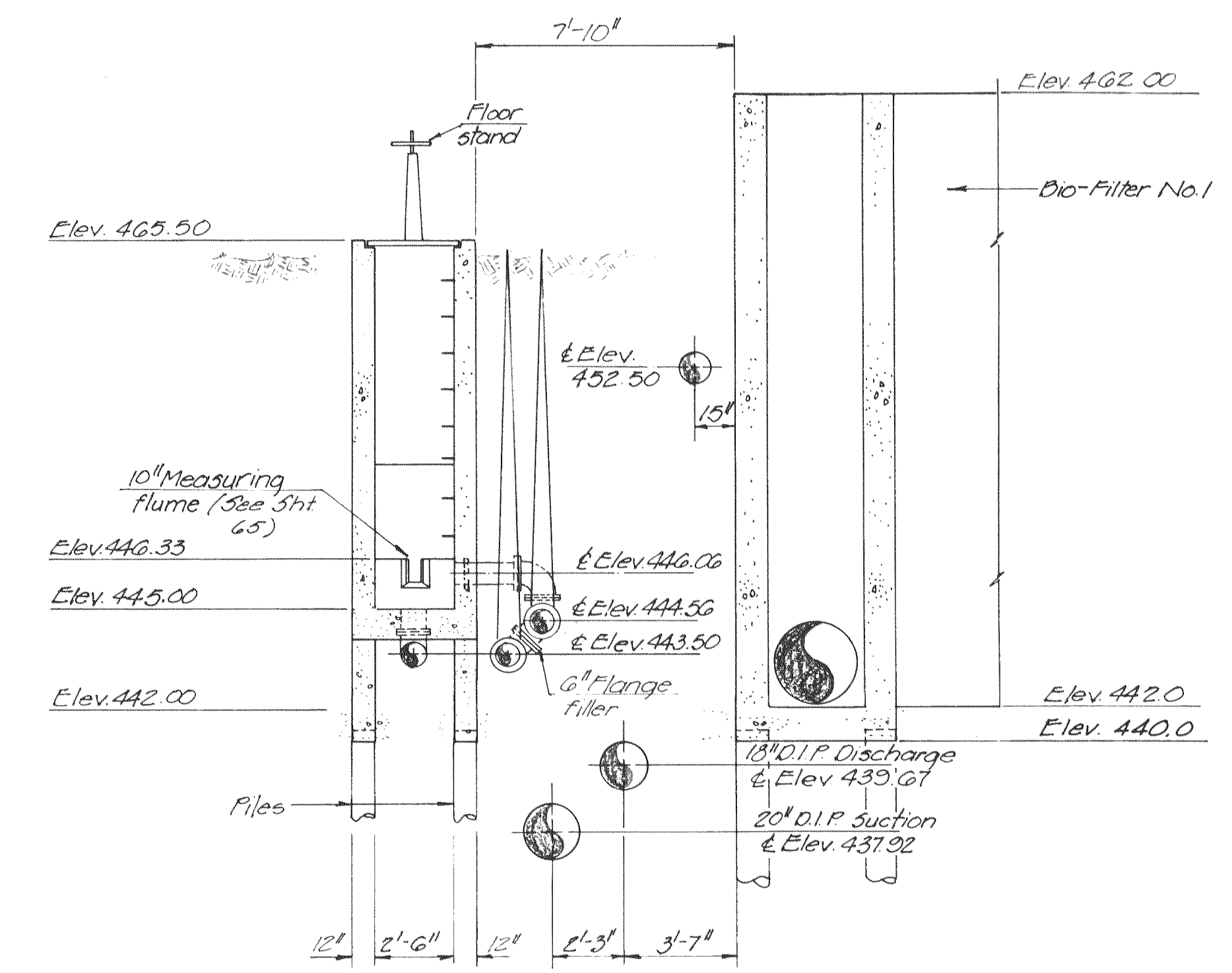
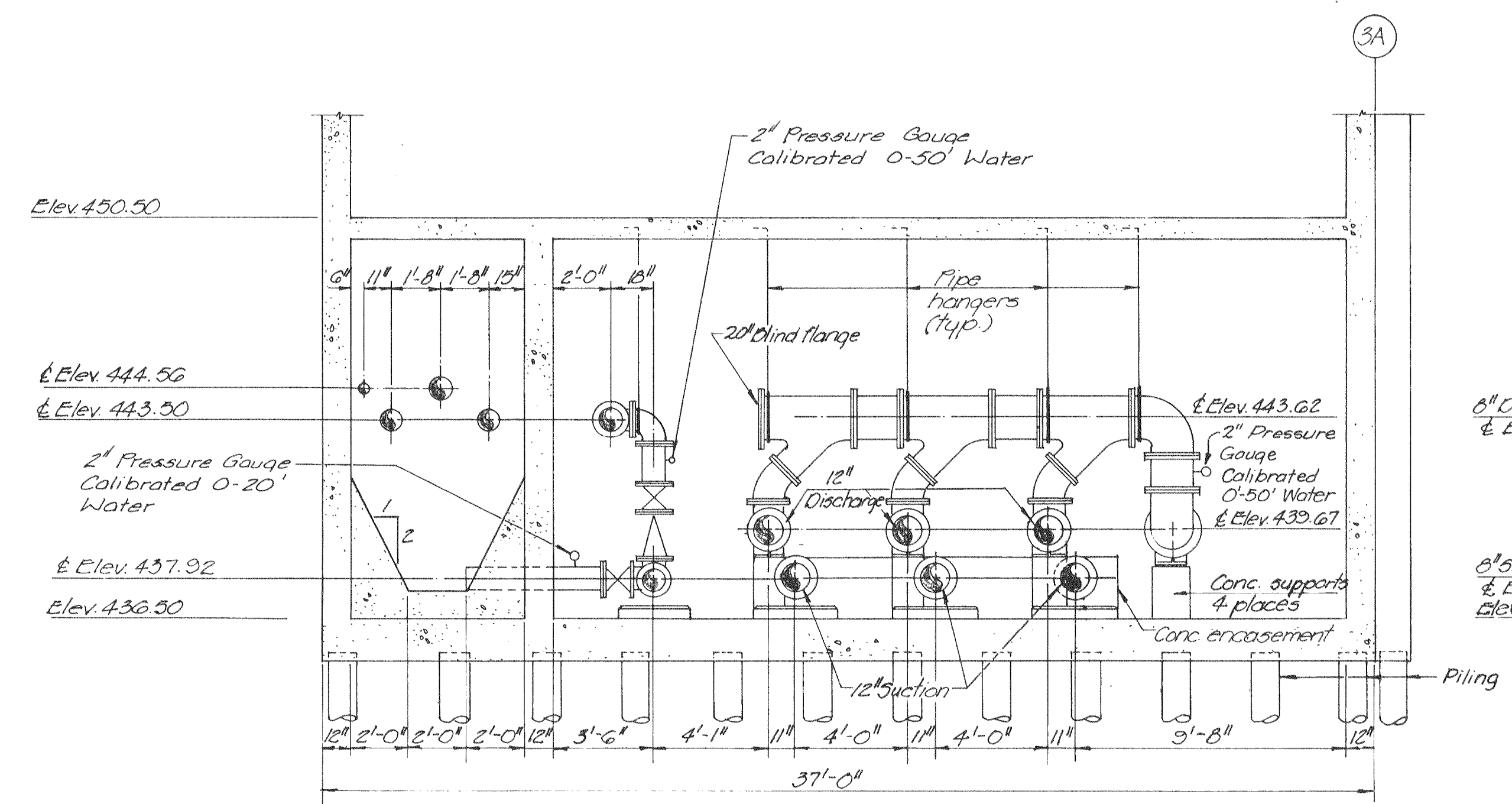


SECTION 1
Scale: 1/4"=1'-0"
(Re: sht 20)

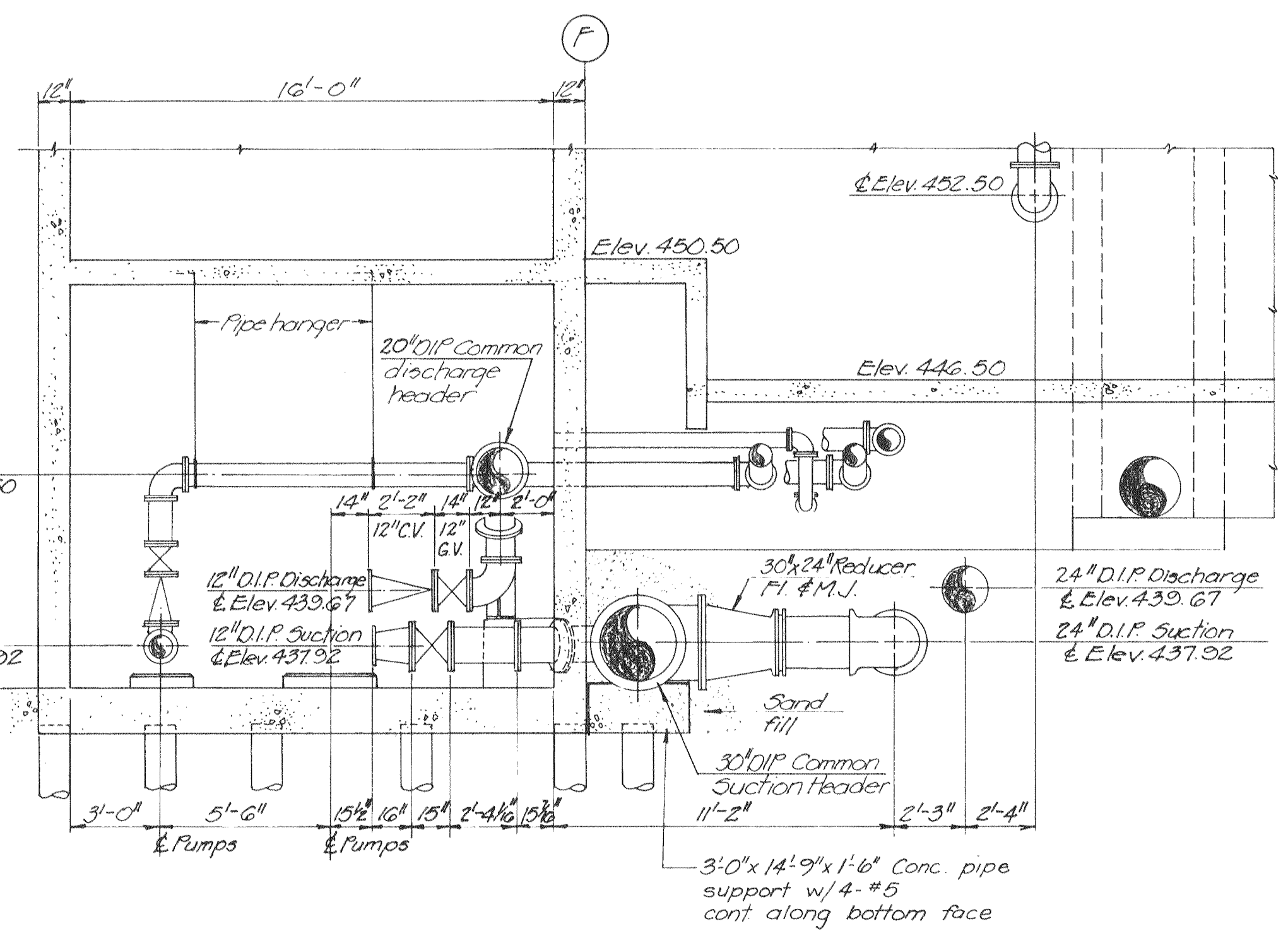


SECTION 4
Scale: 1/4"=1'-0"
(Re: sht 20)



SECTION 2
Scale: 1/4"=1'-0"
(Re: sht 20)

NOTE: Pressure gauges shall have bronze bourdon tubes with brass movement in a steel case. Gauges shall be installed with a valve between the line and gauge.



SECTION 3
Scale: 1/4"=1'-0"
(Re: sht 20)

EPA PROJECT NO. C291090 Rev. 2-82 MKK

| | |
|--|---|
| GBA GEORGE BUTLER ASSOCIATES CONSULTING ENGINEERS/ARCHITECTS LANDSCAPE ARCHITECTS/PLANNERS | OFFICES: SUITE 305 A FAIRWAY OFFICE CENTER 4210 JOHNSON DRIVE / SHAWNEE MISSION / KANSAS 66205 1100 CITY CENTER SQUARE 1100 MAIN / KANSAS CITY / MISSOURI 64105 SUITE 134 LAKESIDE PLAZA II 6700 CORPORATE DRIVE / KANSAS CITY / MISSOURI 64120 |
| | WASTEWATER TREATMENT PLANT EXPANSION BIO-FILTER COMPLEX PROCESS PIPING SECTIONS CITY OF O'FALLON, MISSOURI |

| | | |
|-------------------|------------------|--------------------|
| DESIGNED BY: W.C. | DRAWN BY: C. RAY | CHECKED BY: W.A.C. |
|-------------------|------------------|--------------------|

| |
|----------------------------------|
| JOB NO. 79-2065 |
| DATE July 30, 1981 |
| SCALE As shown |
| SHEET NO. 21 OF 88 |