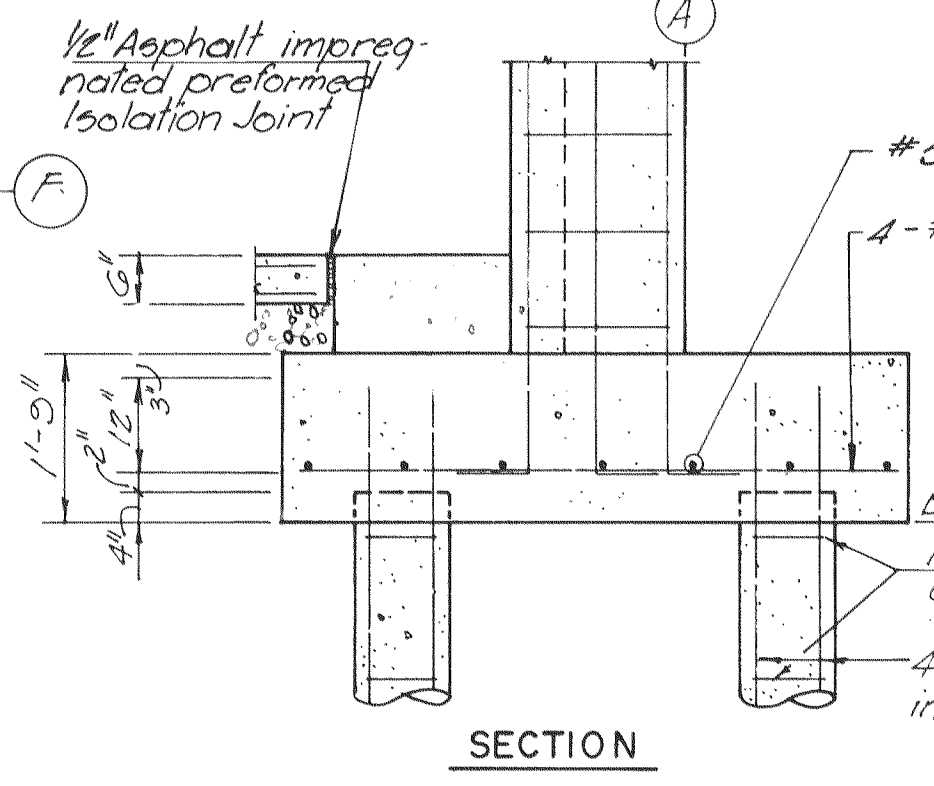
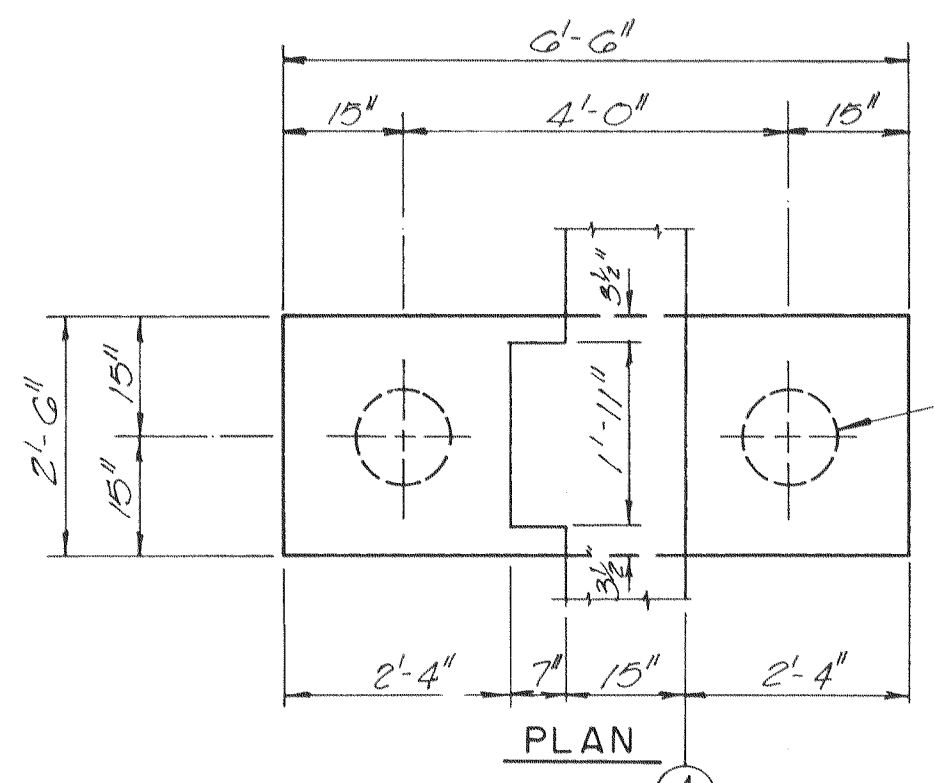


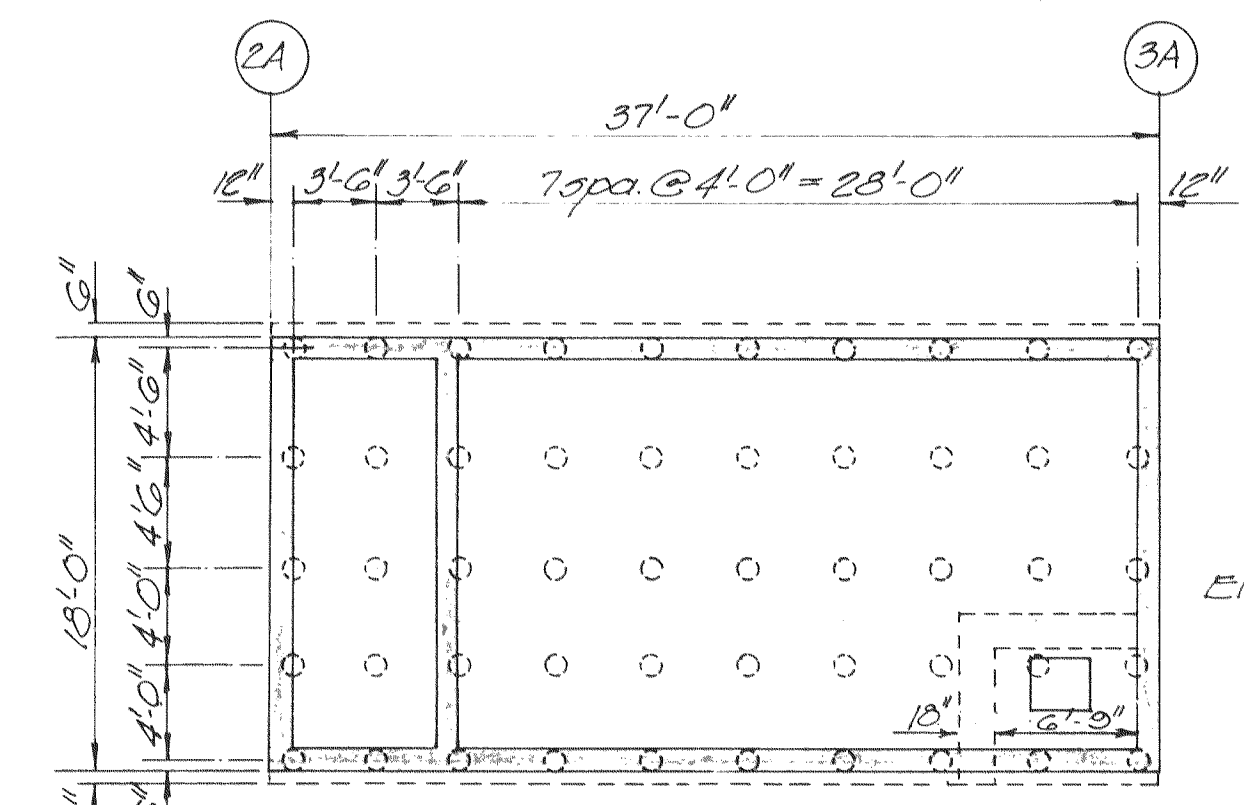
B.O.W. - Bottom of Wall
 F.F. - Finish Floor

BIO-FILTER COMPLEX FOUNDATION PLAN

Scale: 3/16" = 1'-0"
 NOTE: Piling shown above is typical for precast and auger piling except @ Bio-Filter Building - see plan above right.

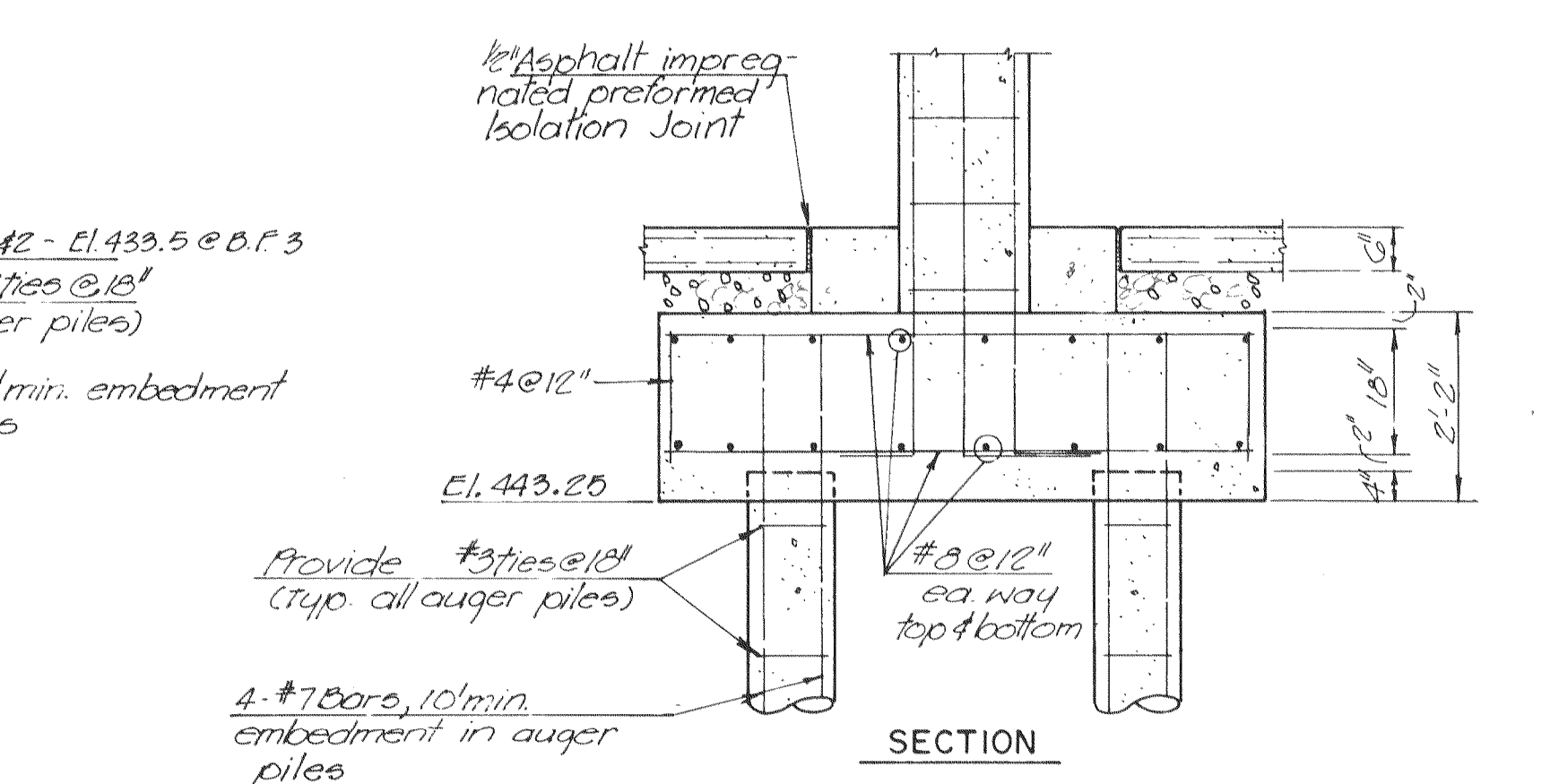
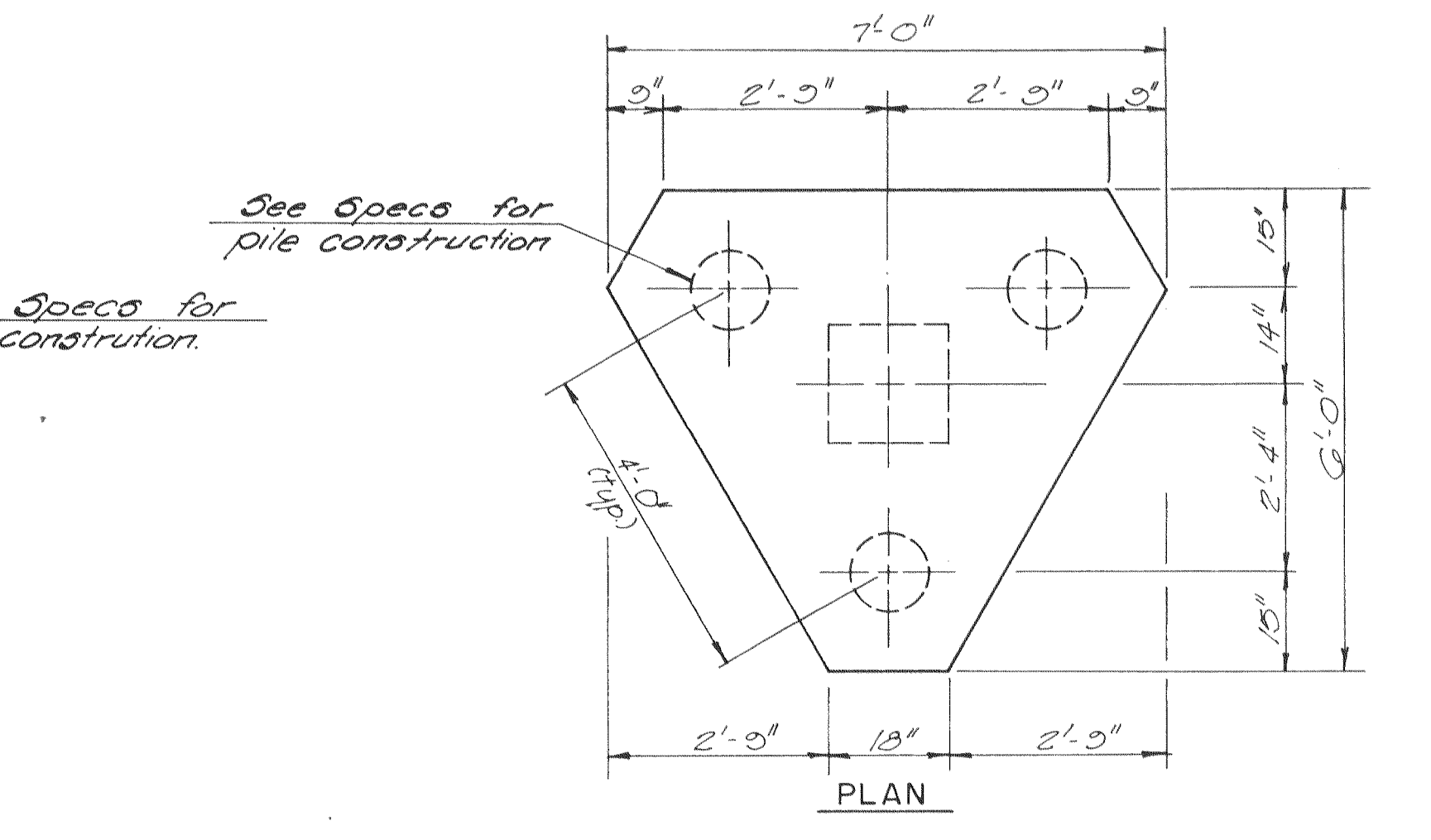


DETAIL PC-1
 Scale: 1/2" = 1'-0"
 (Re. sht 23)

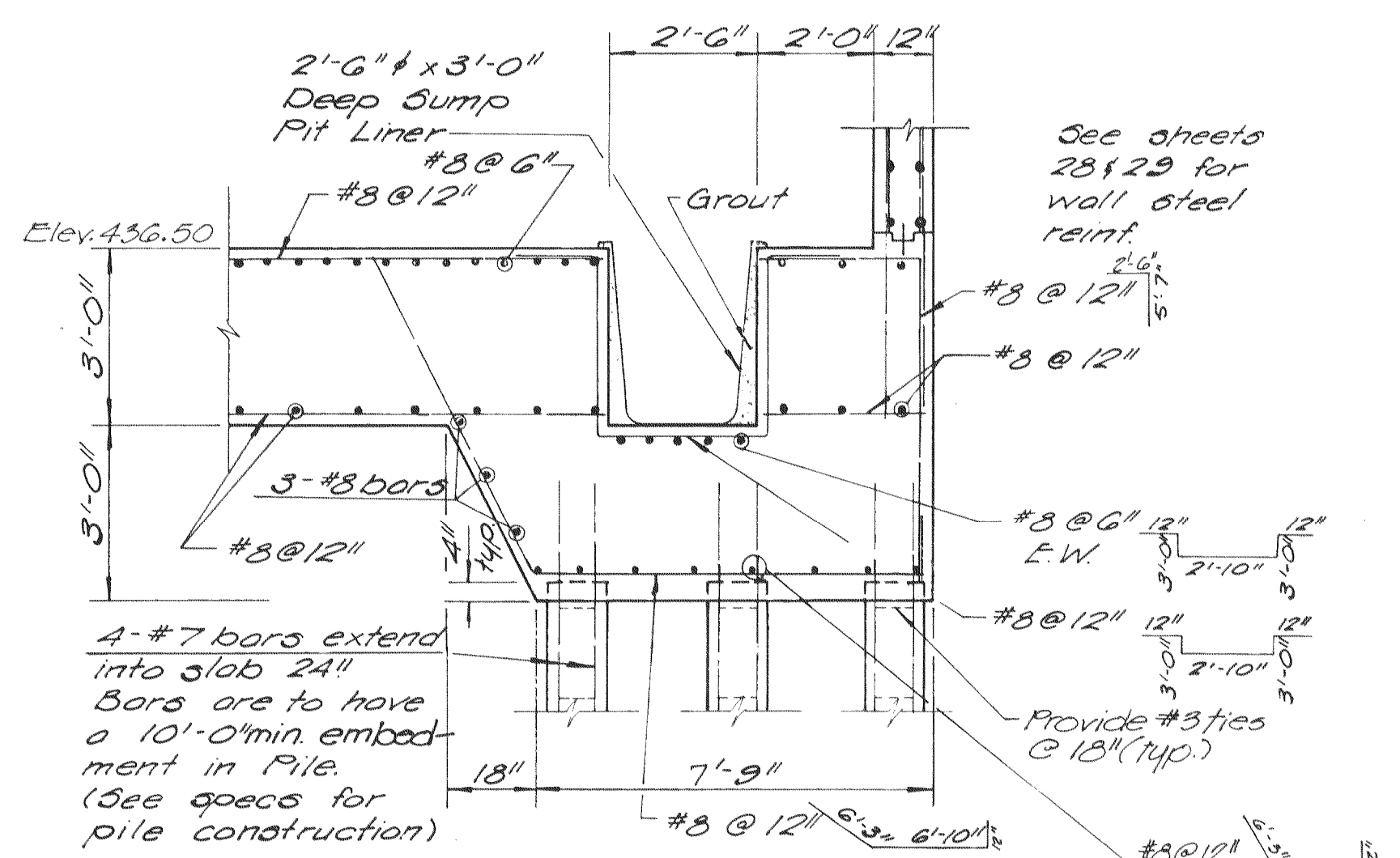


BIO-FILTER BUILDING ALTERNATE LOCATIONS FOR PRECAST PILES

NOTE: Reinf. in the top portion of precast piling shall extend into foundations the same distance as indicated for auger piling (see note sheet 23).



DETAIL PC-2
 Scale: 1/2" = 1'-0"
 (Re. sht 23)



SECTION 3
 Scale: 3/8" = 1'-0"
 24

EPA PROJECT NO. C291090

GBA
 GEORGE BUTLER ASSOCIATES
 CONSULTING ENGINEERS / ARCHITECTS
 LANDSCAPE ARCHITECTS / PLANNERS

OFFICES:
 SUITE 305-A FAIRWAY OFFICE CENTER
 4210 JOHNSON DRIVE / SHAWNEE MISSION / KANSAS 66205
 1100 CITY CENTER SQUARE
 1100 MAIN / KANSAS CITY / MISSOURI 64105
 SUITE 134 LAKESIDE PLAZA II
 6700 CORPORATE DRIVE / KANSAS CITY / MISSOURI 64120

WASTEWATER TREATMENT PLANT EXPANSION
BIO-FILTER COMPLEX FOUNDATION PLAN - SOUTH
 CITY OF FALLOON, MISSOURI

DESIGNED BY JLS. DRAWN BY W.Y. CHECKED BY M.L.S.

JOB NO. 79-2065
 DATE 7/30/81
 SCALE As Noted
 SHEET NO. 24 OF 88