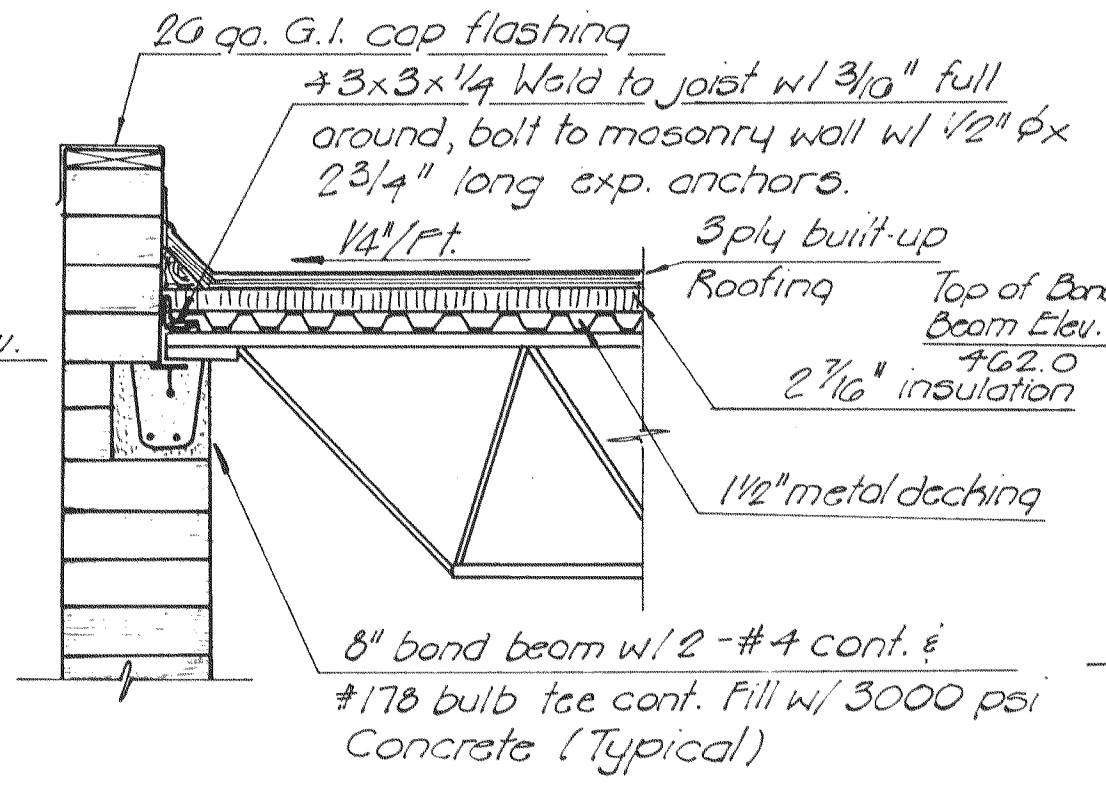
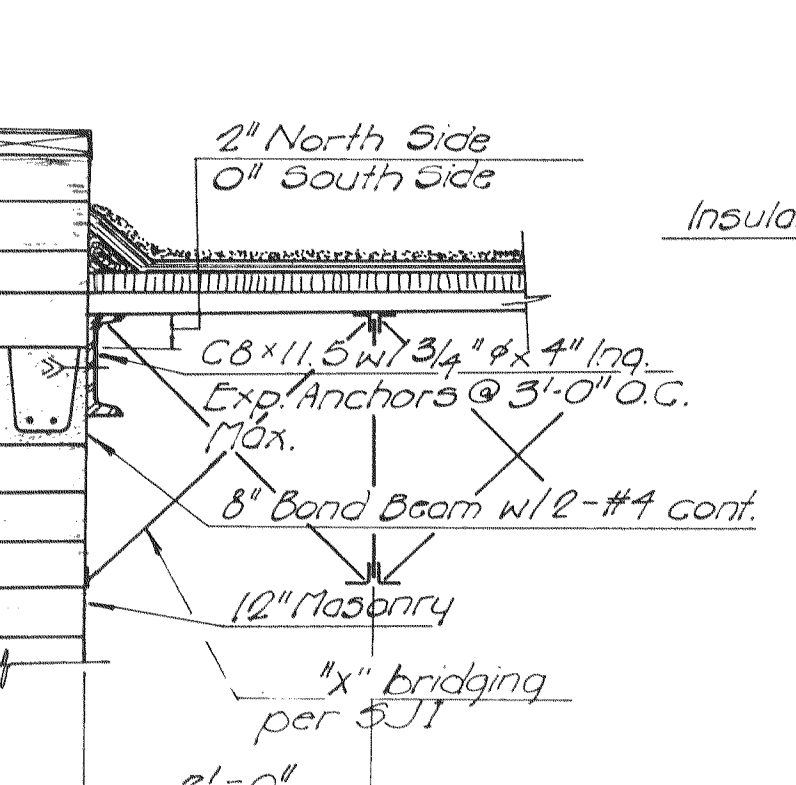


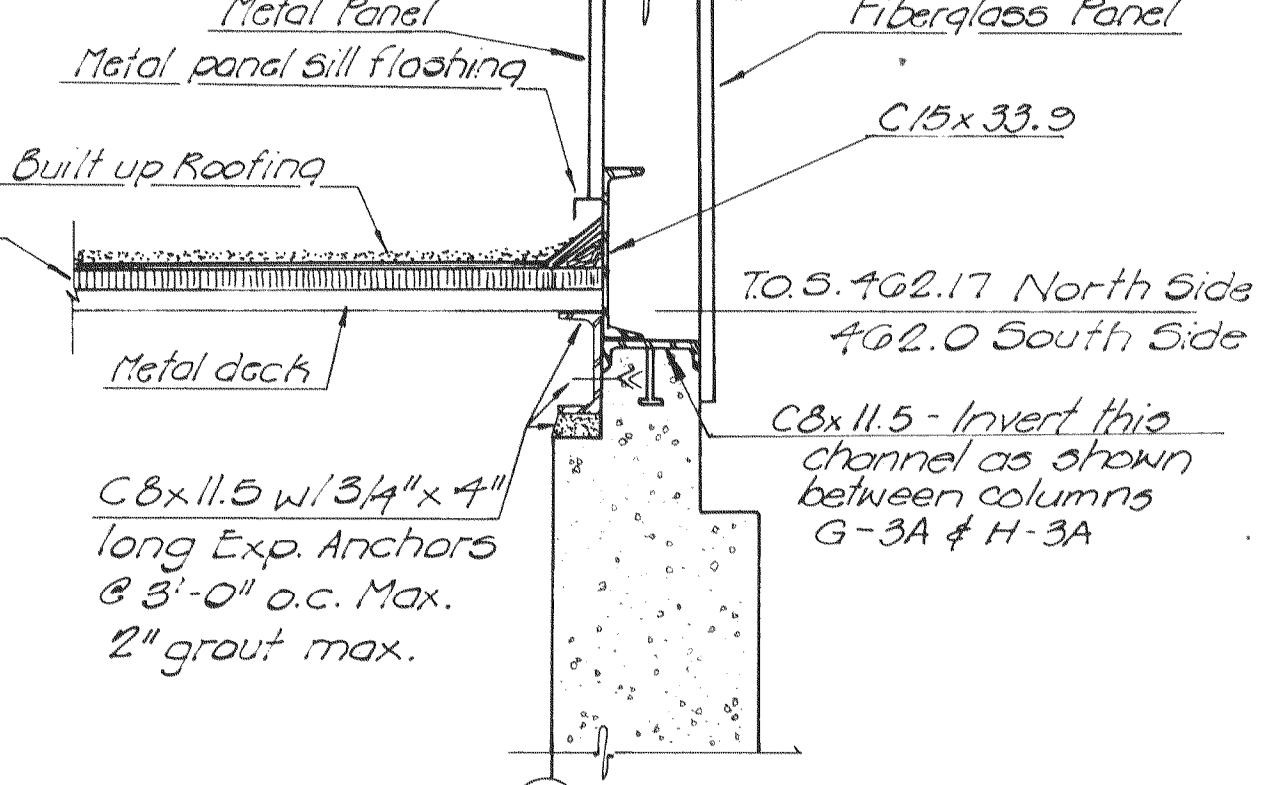
SECTION 1
Scale: 3/4" = 1'-0"
(Re. sh. 27)



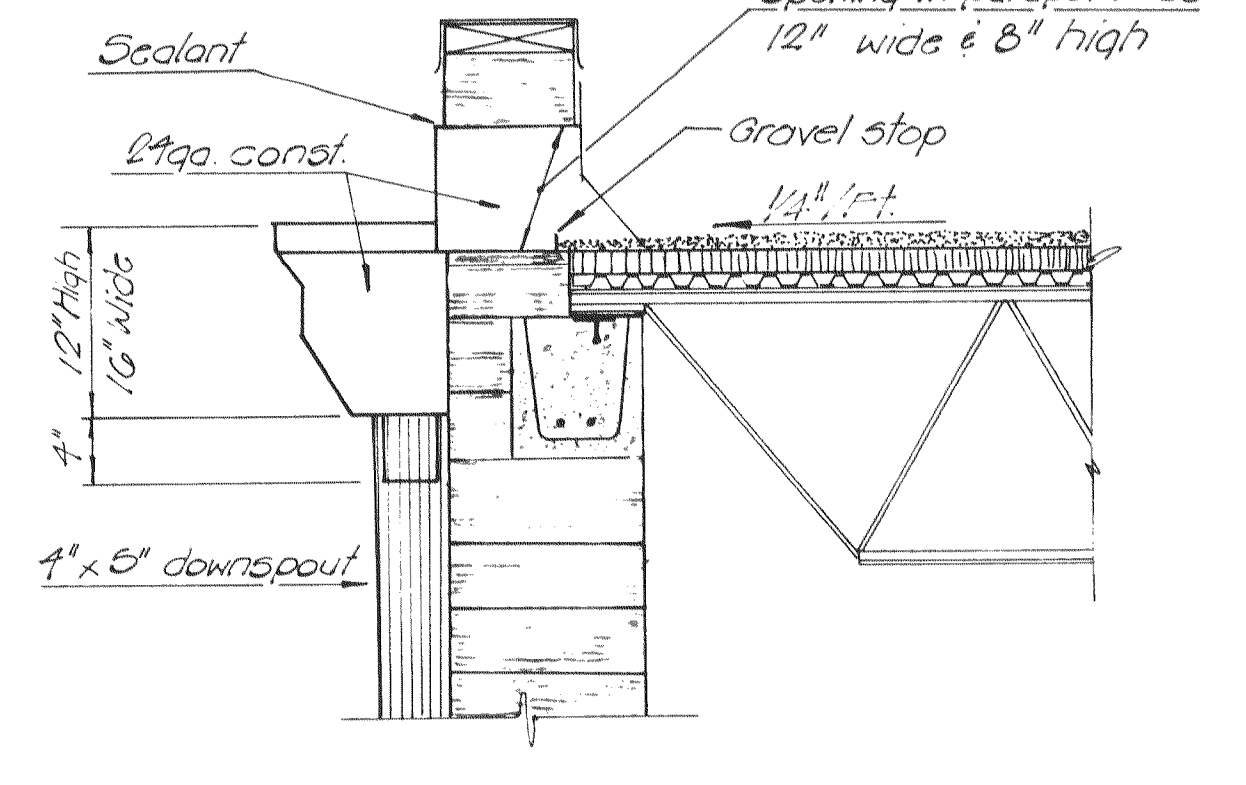
SECTION 2
Scale: 3/4" = 1'-0"
(Re. sh. 27)



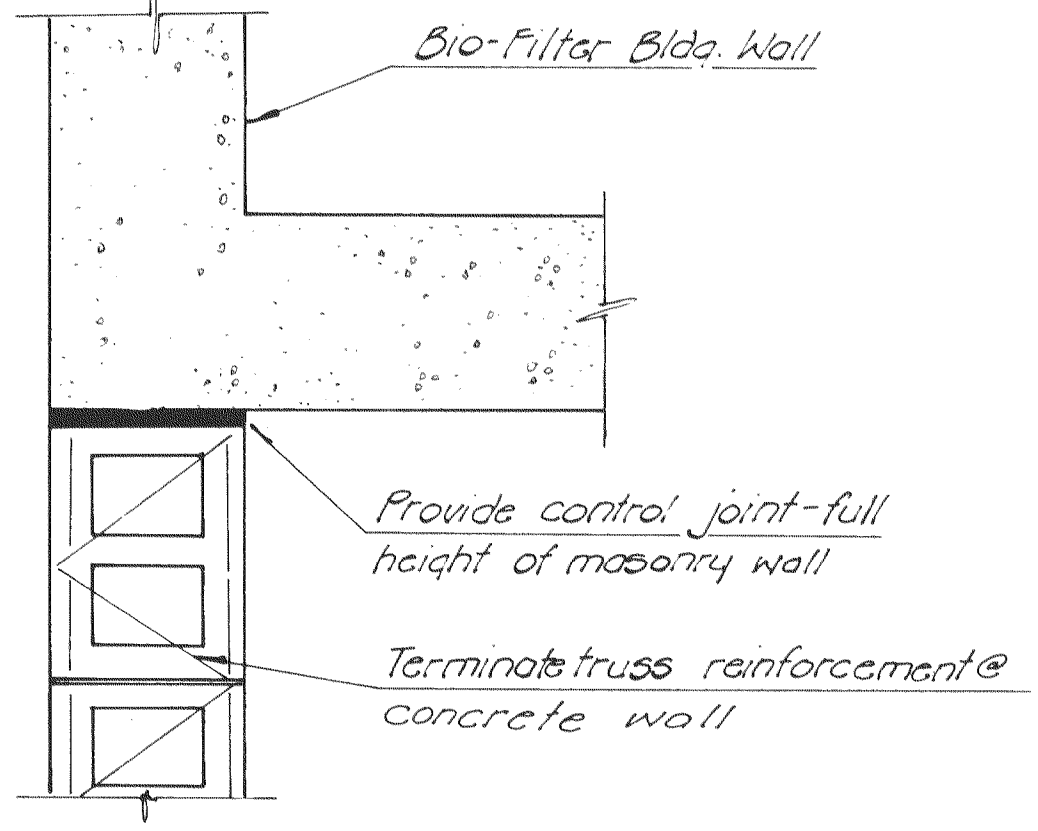
SECTION 3
Scale: 3/4" = 1'-0"
(Re. sh. 27)



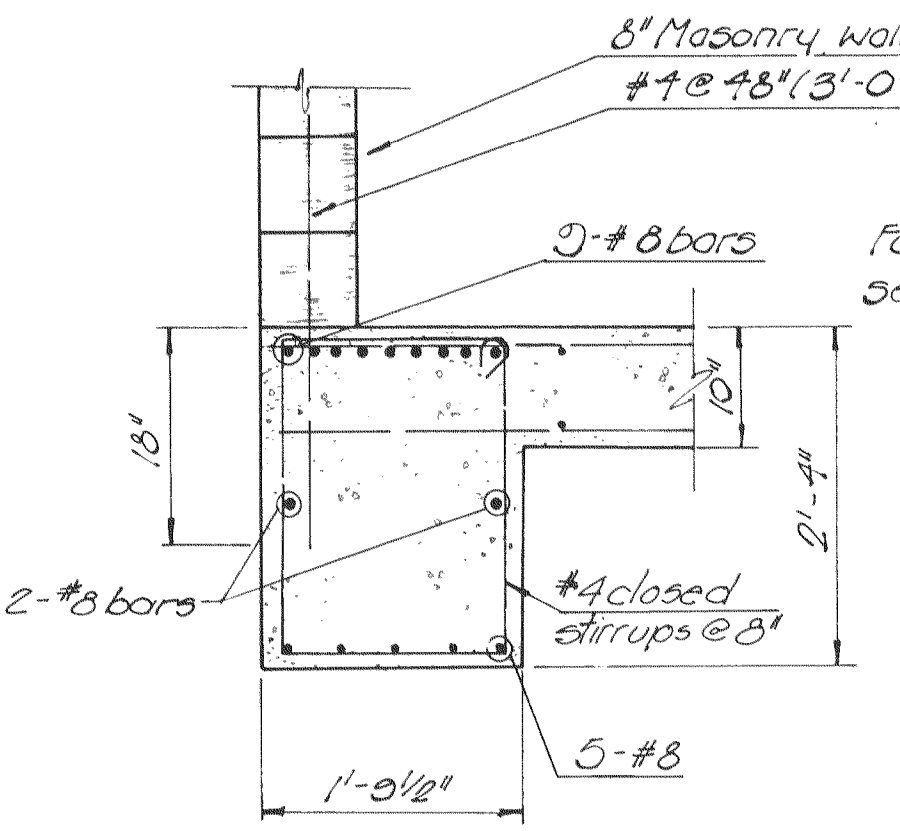
SECTION 4
Scale: 3/4" = 1'-0"
(Re. sh. 27)



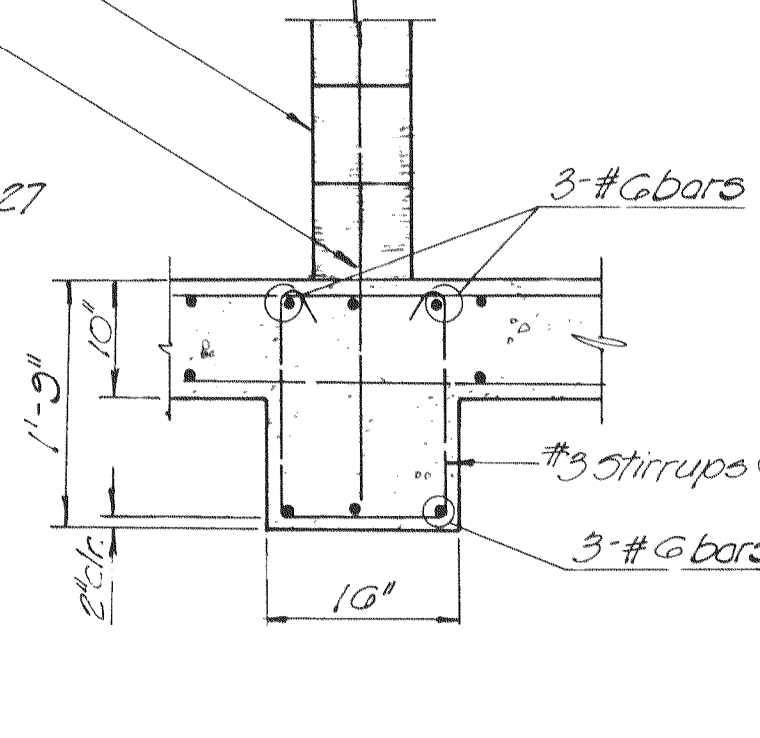
SCUPPER DETAIL
Scale: 1" = 1'-0"
(Re. sh. 27)



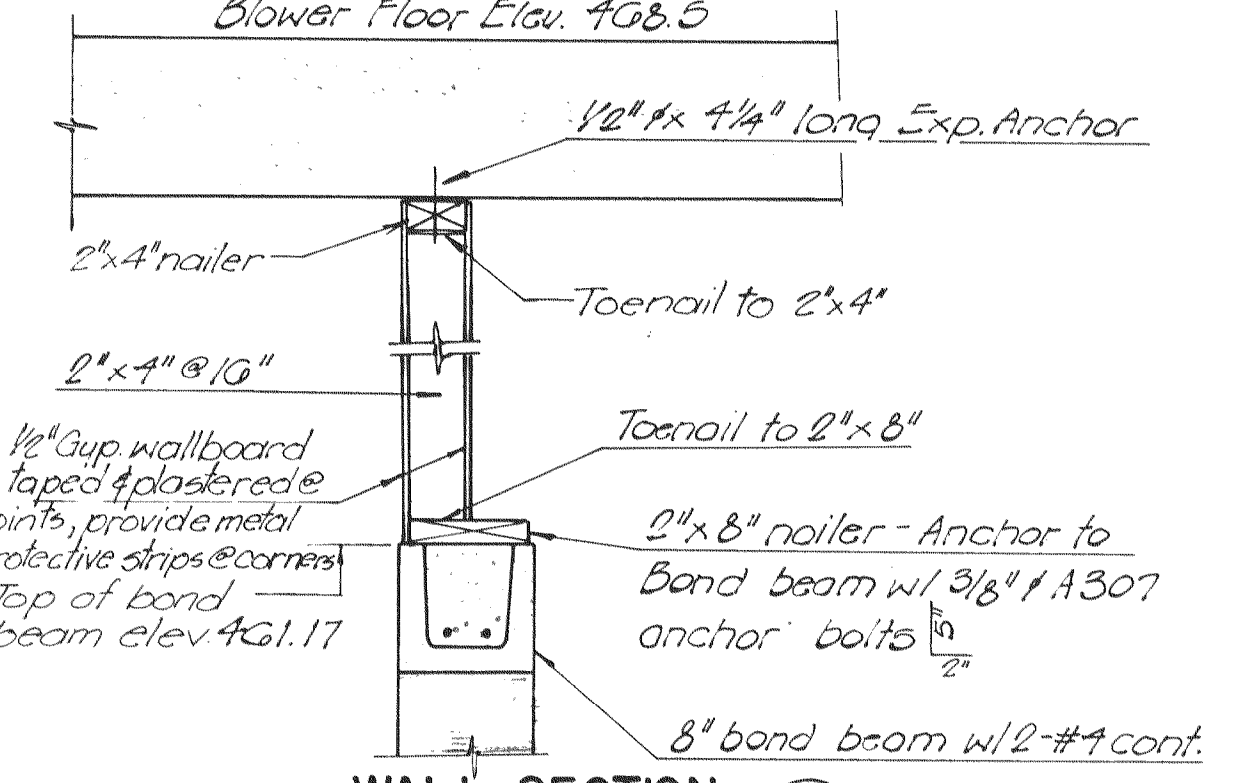
SECTION 6
Scale: 1/2" = 1'-0"
(Re. sh. 27)



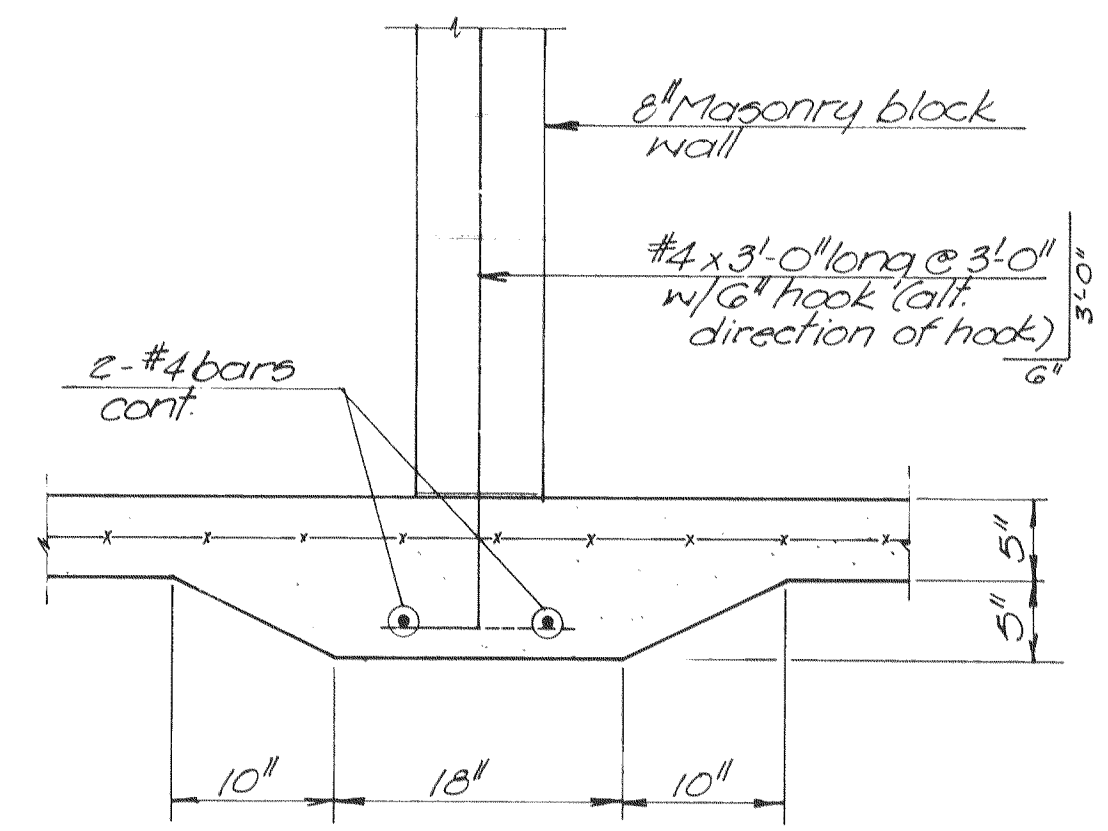
SECTION 7
Scale: 3/4" = 1'-0"
(Re. sh. 27)



SECTION 8
Scale: 3/4" = 1'-0"
(Re. sh. 27)

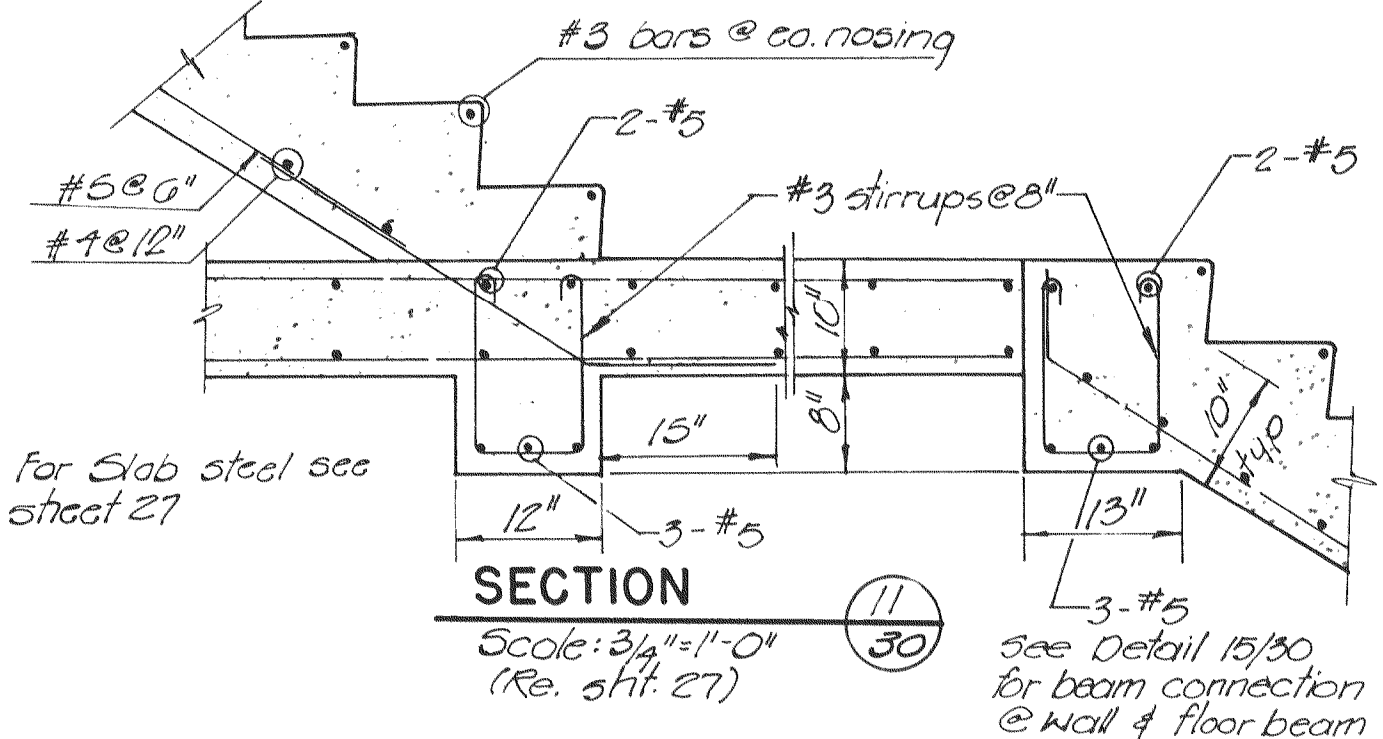


WALL SECTION 9
Scale: 1" = 1'-0"
(Re. sh. 27)

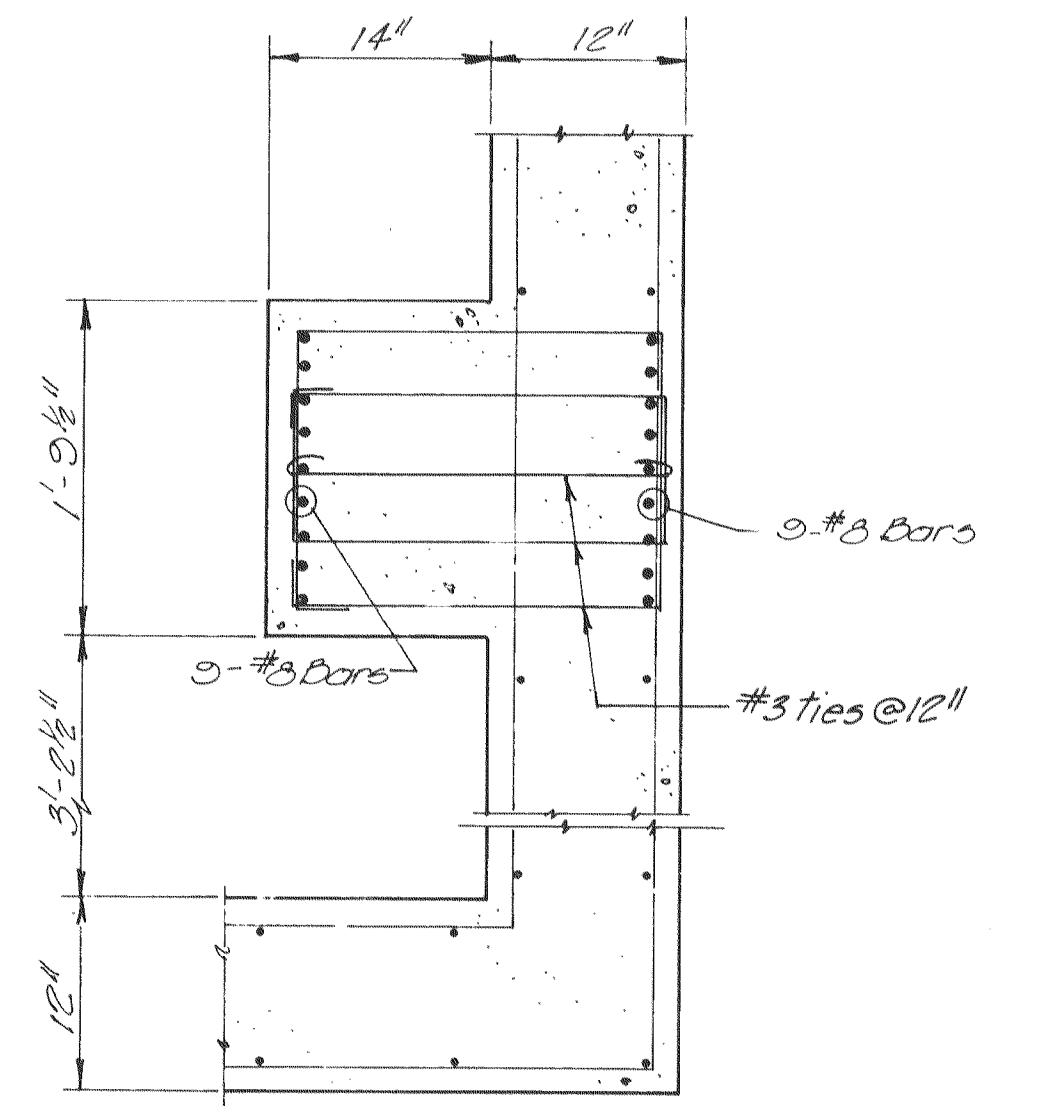


SECTION 10
Scale: 1" = 1'-0"
(Re. sh. 27)

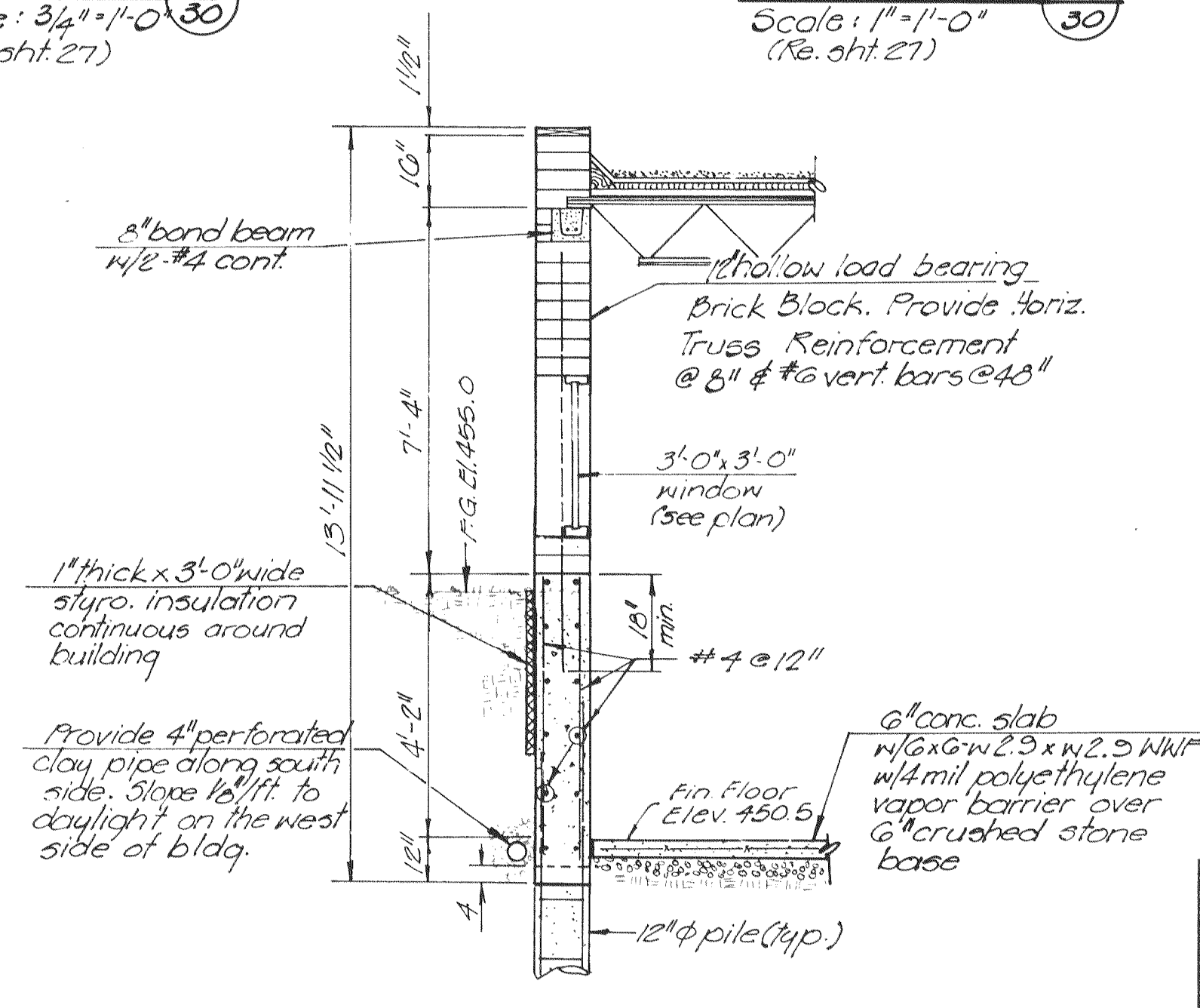
Floor expansion assembly capable of withstanding a 3" vertical deflection. Material shall be aluminum alloy 6063-T5 and T-6 finished with mill finish. Items in contact with concrete shall be steel.



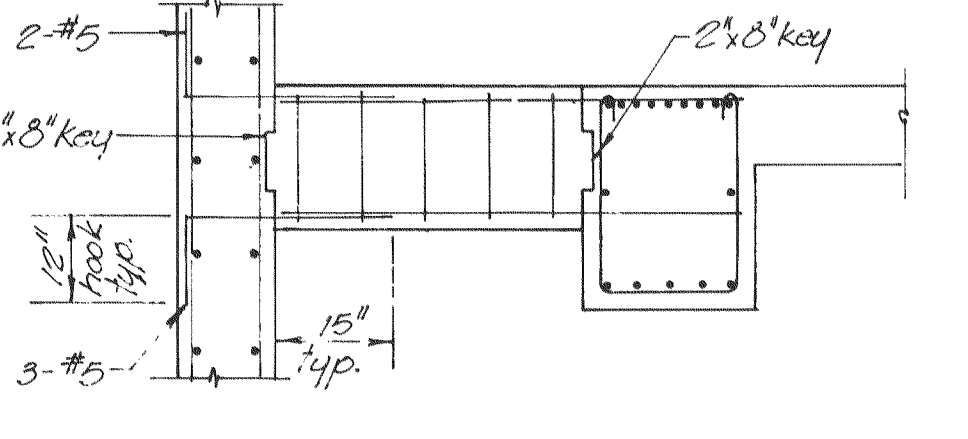
SECTION 11
Scale: 3/4" = 1'-0"
(Re. sh. 27)



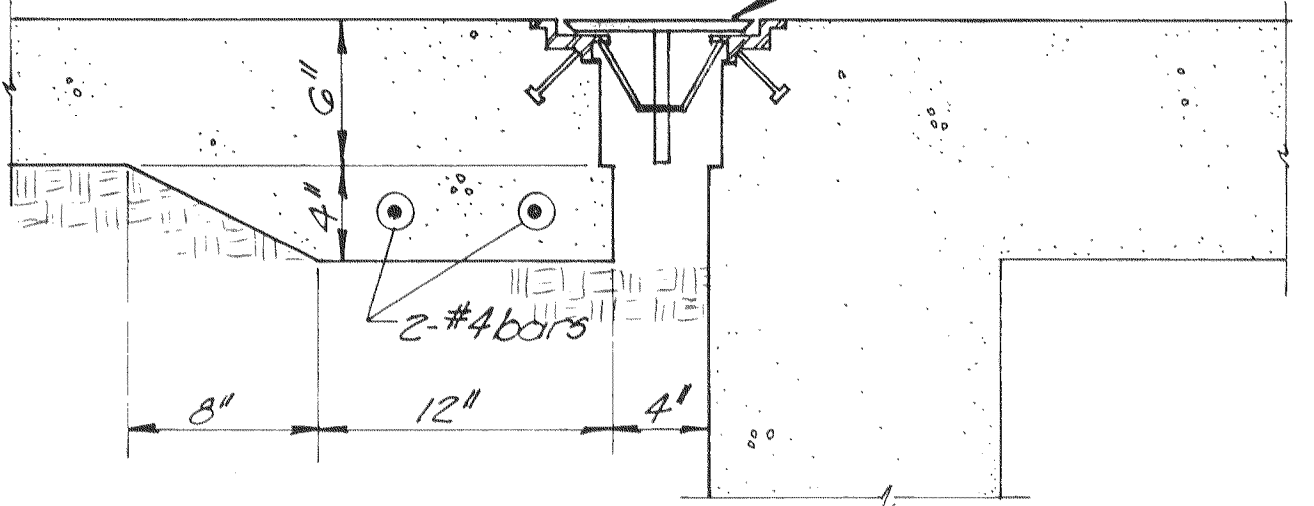
DETAIL 12
Scale: 1" = 1'-0"
(Re. sh. 20)



TYPICAL WALL SECTION 13
Scale: 3/8" = 1'-0"
(Re. sh. 27)



DETAIL 15
Scale: 1/2" = 1'-0"
(Re. sh. 27)



FLOOR EXPANSION ASSEMBLY 14
Not to scale (Re. sh. 27)
E.P.A. PROJECT NO. C291090

GBA
GEORGE BUTLER ASSOCIATES
CONSULTING ENGINEERS/ARCHITECTS
LANDSCAPE ARCHITECTS/PLANNERS

OFFICES:
SUITE 305-A FAIRWAY OFFICE CENTER
4210 JOHNSON DRIVE / SHAWNEE MISSION / KANSAS 66205
1100 CITY CENTER SQUARE
1100 MAIN / KANSAS CITY / MISSOURI 64105
SUITE 134 LAKESIDE PLAZA II
6700 CORPORATE DRIVE / KANSAS CITY / MISSOURI 64120

**WASTEWATER TREATMENT
PLANT EXPANSION
BIO-FILTER BUILDING
OPERATING FLOOR SECTIONS**
CITY OF O'FALLON, MISSOURI

DESIGNED BY: J.S. DRAWN BY: N.Y. & C. RAYO CHECKED BY: M.L.S.

JOB NO. 79-2065
DATE July 30, 1981
SCALE As Noted
SHEET NO. 30 OF 88