

4" Dia. Sludge pump suction line  
(To Remain)

See Section 4/51

(To be Removed)

16" Gate Valve and pipe nipple to remain

(To Remain)

(To be Removed)

Remove this section

50'-0" Dia.

23'-6"

(To be Removed)

(To be Removed)

(To Remain)

New Steps (5 Places)  
7'-0" x Inlet Diffusion Well

(To Remain)

15" x 15" Conc. Pier

12" Steel pipe to be coated with Cool-Far Epoxy

(To be Removed)

(To be Removed & Replaced)

18" x 12" Red (Fig. 47.1)

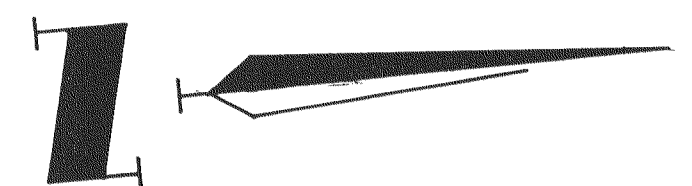
12" Spool piece, 2'-5" Long

(To Remain)

(To Remain)

(To Remain)

Remain (To



(To Remain)  
THICKENER

(To be Replaced)

To be converted into Bridge Suspended Thickener.

(To Remain)

(To Remain)

(To Remain)

AEROBIC DIGESTER

(To Remain)

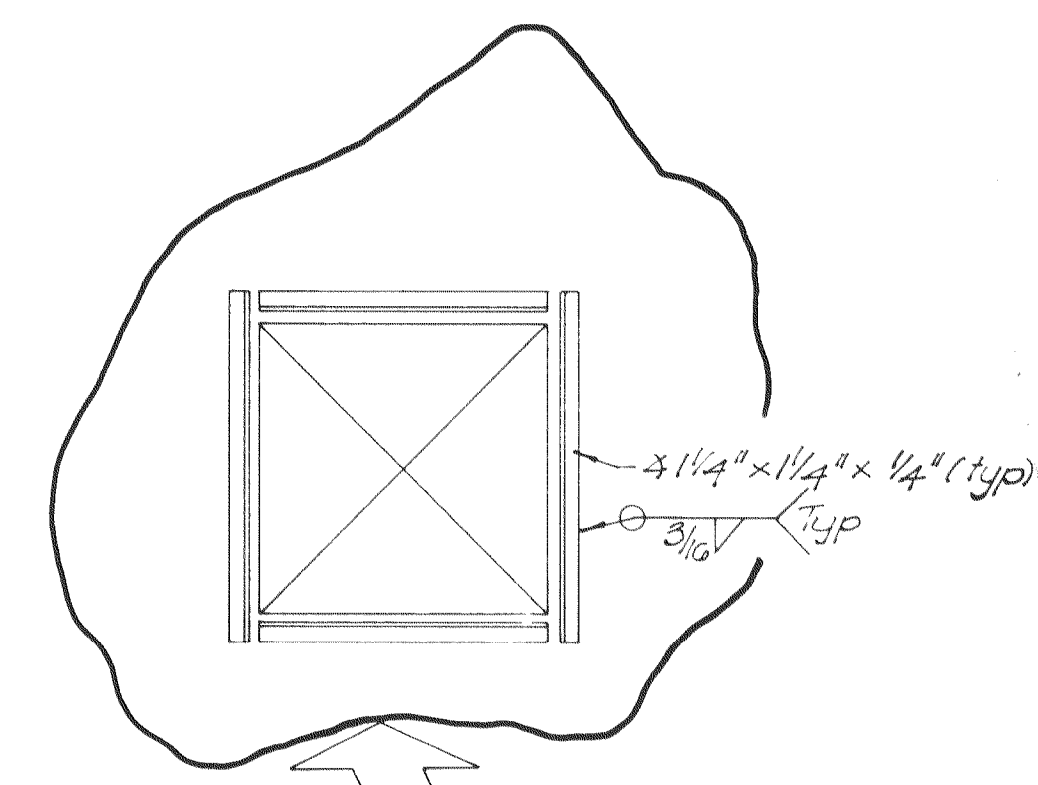
To be converted into Aerobic Digester.

(To Remain)

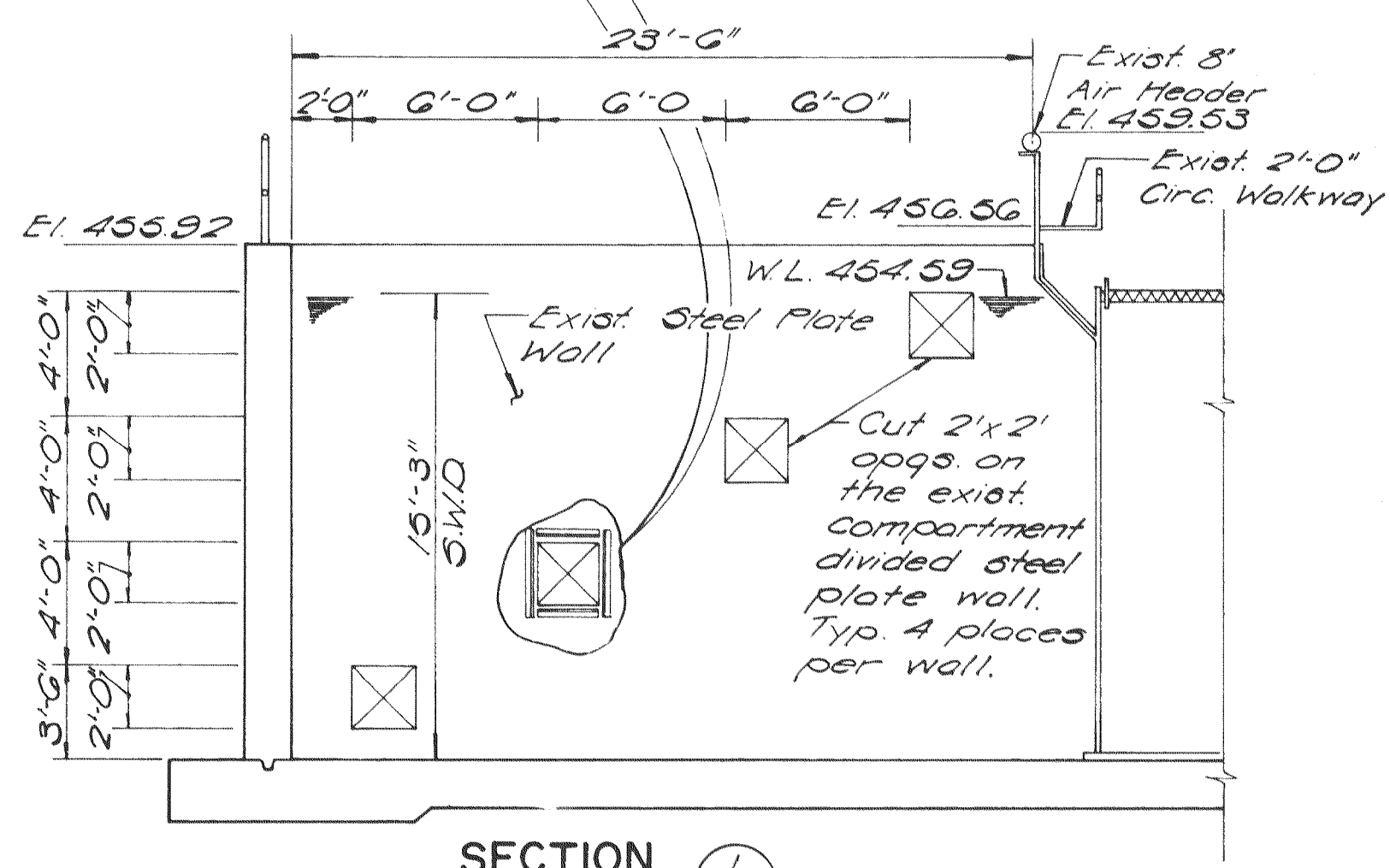
(To Remain)

(To Remain)

(To Remain)



Remove 10" return, sludge air lift and replace with relocated 3" automatic waste sludge airlift



SECTION 1/51

EPA PROJECT NO. C291090		Rev. 2-82 MKK
<b>GBA</b> GEORGE BUTLER ASSOCIATES CONSULTING ENGINEERS/ARCHITECTS LANDSCAPE ARCHITECTS/PLANNERS	OFFICES: SUITE 305-A FAIRWAY OFFICE CENTER 4210 JOHNSON DRIVE / SHAWNEE MISSION / KANSAS 66205 1100 CITY CENTER SQUARE 1100 MAIN / KANSAS CITY / MISSOURI 64105 SUITE 134 LAKESIDE PLAZA II 6700 CORPORATE DRIVE / KANSAS CITY / MISSOURI 64120	
	WASTEWATER TREATMENT PLANT EXPANSION <b>THICKENER / AEROBIC DIGESTER          MODIFICATION PLAN</b> CITY OF O'FALLON, MISSOURI	
DESIGNED BY: WCC/J.L.S.	DRAWN BY: CR/S.P.W.	CHECKED BY: W.A.C.
JOB NO. 79-2065	DATE July 30, 1981	SCALE As shown
SHEET NO. 51		OF 88