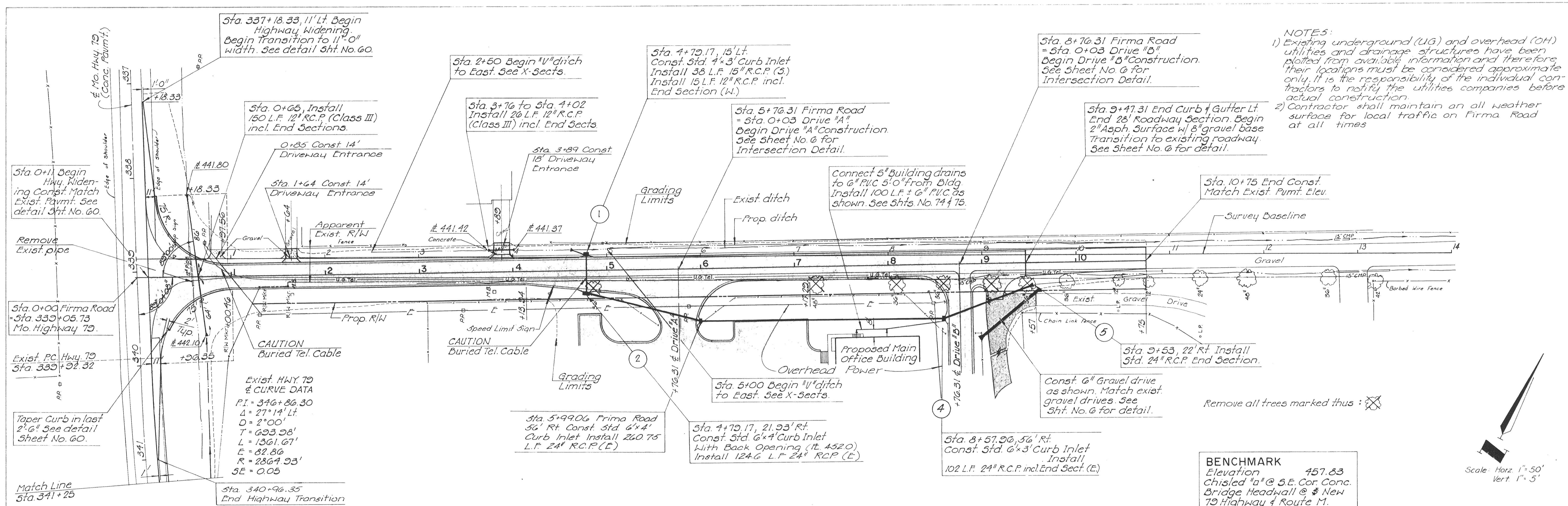


PLAN
 SURVEYED BY: []
 NOTED BY: []
 CHECKED BY: []
 DATE: []

PROFILE
 SURVEYED BY: []
 NOTED BY: []
 CHECKED BY: []
 DATE: []

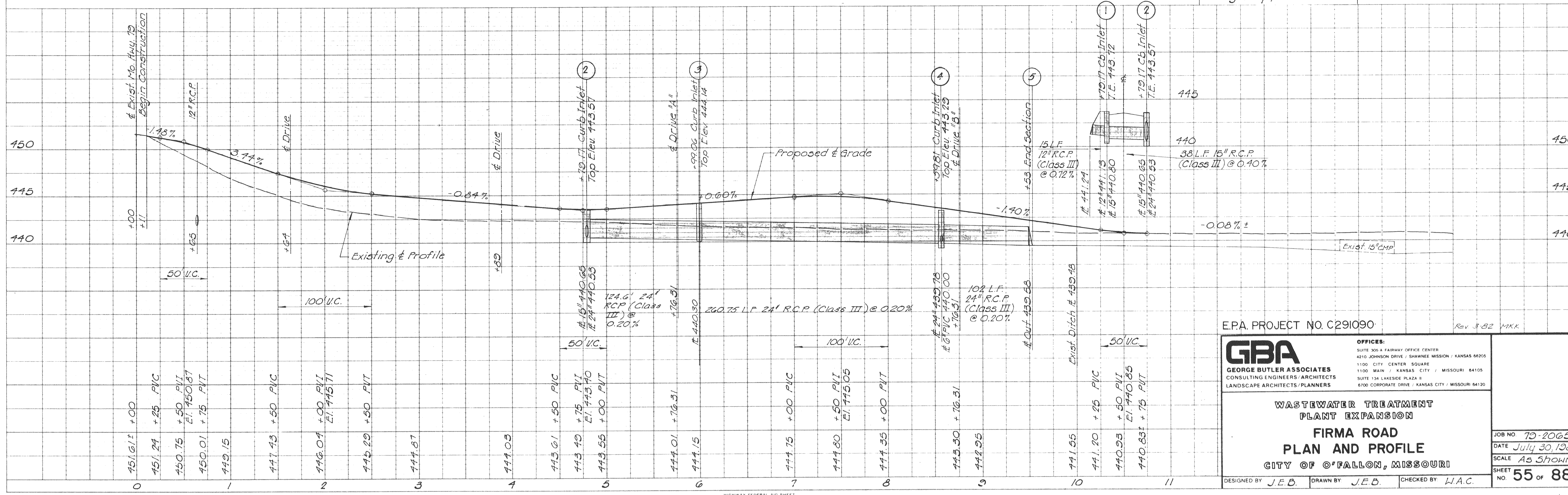


EXIST. HWY 79
 CURVE DATA
 P.I. = 346+86.30
 Δ = 27°14' Lt
 D = 2°00'
 T = 693.98'
 L = 1361.67'
 E = 82.86'
 R = 2864.93'
 SE = 0.05

BENCHMARK
 Elevation 457.83
 Chisled "a" @ S.E. Cor. Conc. Bridge Headwall @ S New 79 Highway & Route M.

NOTES:
 1) Existing underground (UG) and overhead (OH) utilities and drainage structures have been plotted from available information and therefore their locations must be considered approximate only. It is the responsibility of the individual contractors to notify the utilities companies before actual construction.
 2) Contractor shall maintain on all weather surface for local traffic on Firma Road at all times.

Scale: Horz. 1" = 50'
 Vert. 1" = 5'



E.P.A. PROJECT NO. C291090

Rev. 3-82 MKK

GBA
 GEORGE BUTLER ASSOCIATES
 CONSULTING ENGINEERS/ARCHITECTS
 LANDSCAPE ARCHITECTS/PLANNERS

OFFICES:
 SUITE 305-A FAIRWAY OFFICE CENTER
 4210 JOHNSON DRIVE / SHAWNEE MISSION / KANSAS 66205
 1100 CITY CENTER SQUARE
 1100 MAIN / KANSAS CITY / MISSOURI 64105
 SUITE 134 LAKESIDE PLAZA II
 6700 CORPORATE DRIVE / KANSAS CITY / MISSOURI 64120

WASTEWATER TREATMENT
 PLANT EXPANSION

FIRMA ROAD
 PLAN AND PROFILE
 CITY OF FALLON, MISSOURI

DESIGNED BY J.E.B. DRAWN BY J.E.B. CHECKED BY W.A.C.

JOB NO. 75-2065
 DATE July 30, 1981
 SCALE As Shown
 SHEET NO. 55 of 88