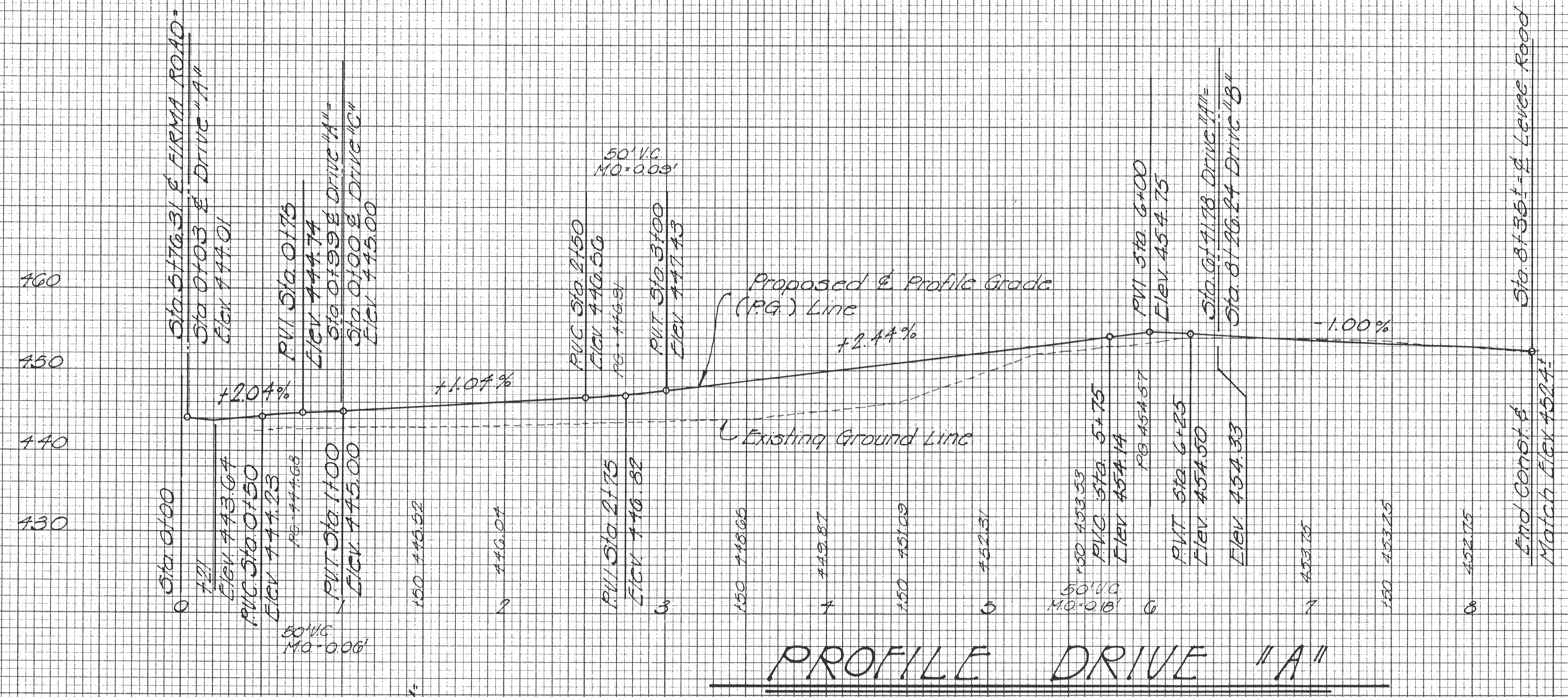


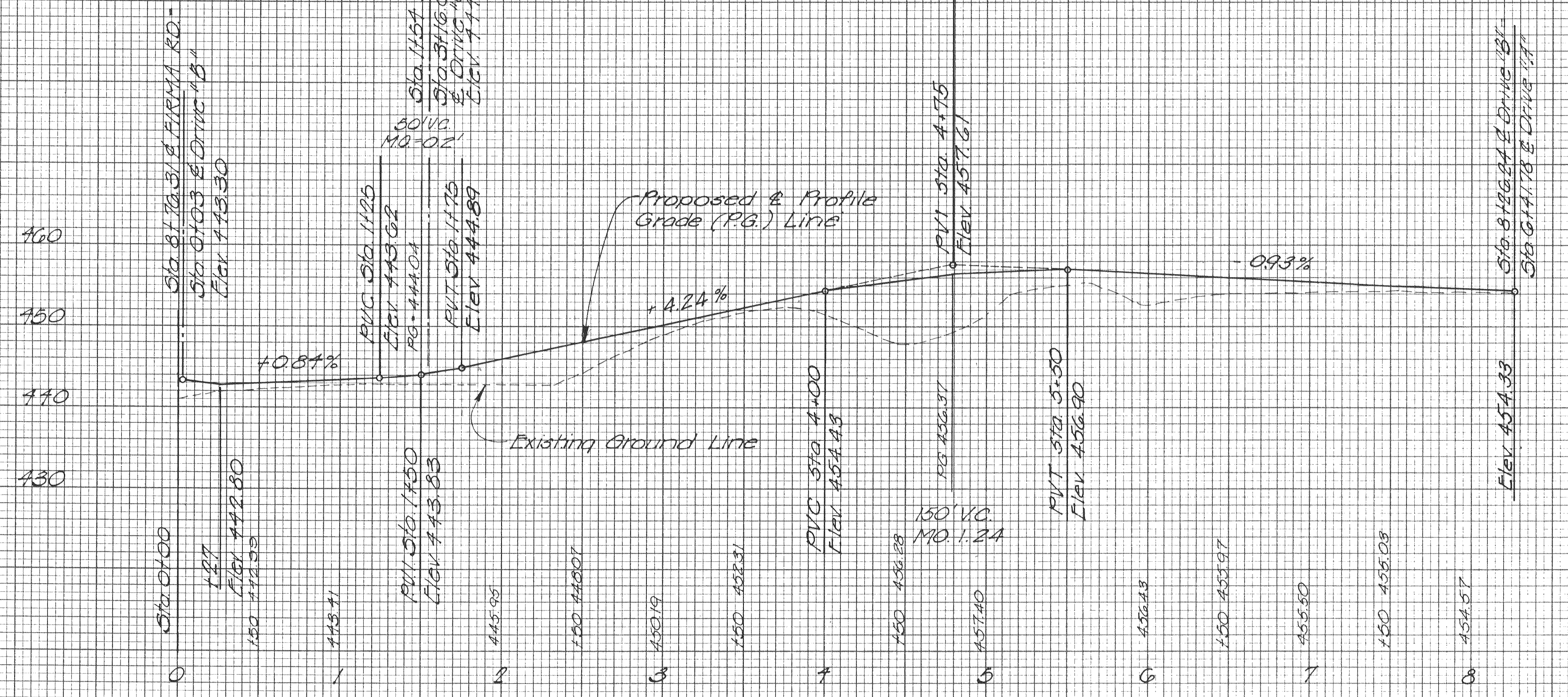
Location	Project Number	Year	Sheet Number	Total Sheets
O'Fallon, Mo	2065	1981	57	88

FINAL SURVEY	DATE
SURVEYED	
PLOTTED	
NOTE BOOK	
AREAS	
CHECKED	

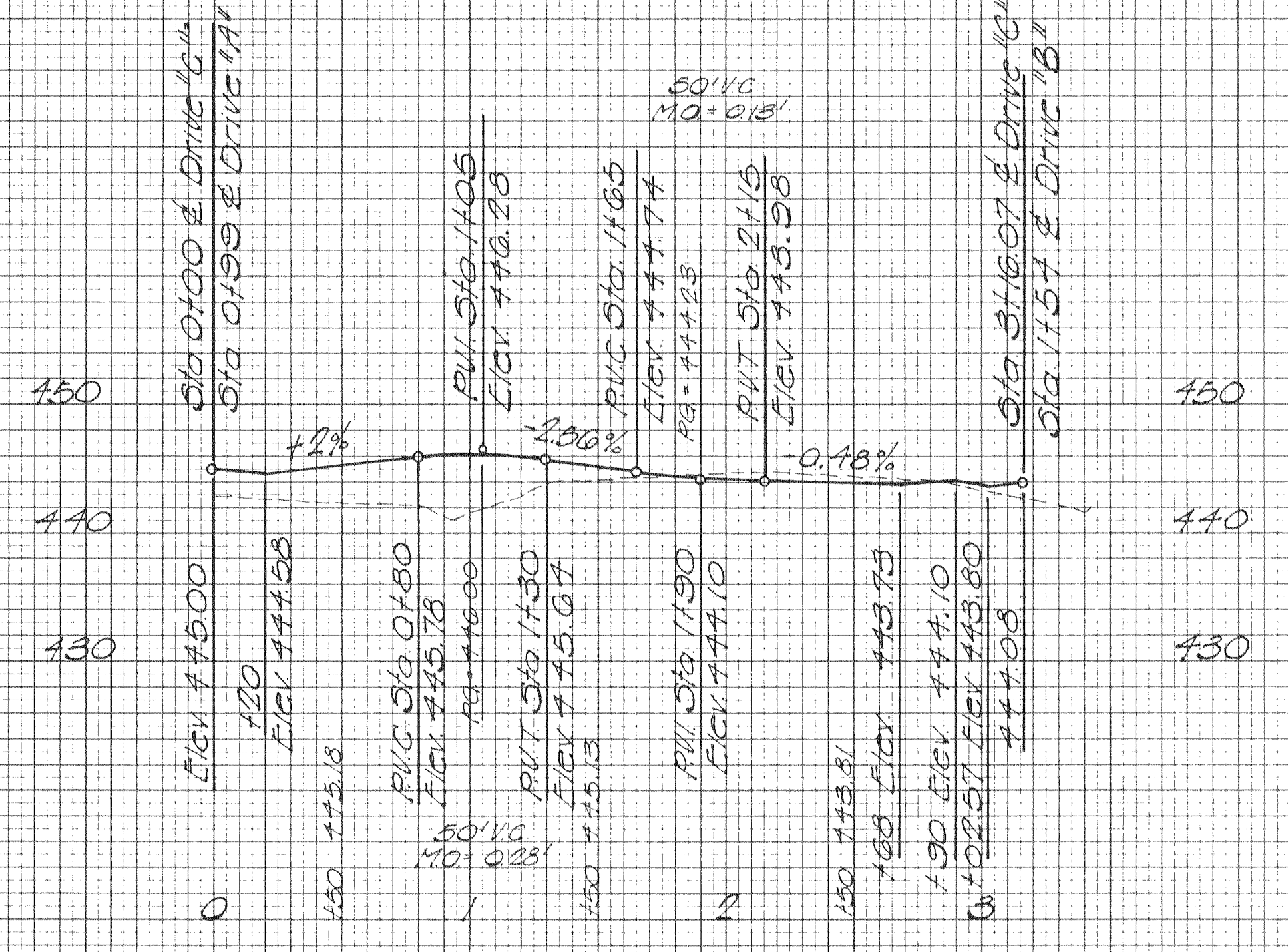
ORIGINAL SURVEY	DATE
SURVEYED	
PLOTTED	
NOTE BOOK	
AREAS	
CHECKED	



PROFILE DRIVE "A"



PROFILE DRIVE "B"



PROFILE DRIVE "C"

Scale: Horiz. 1" = 50'  
Vert. 1" = 10'

E.P.A. PROJECT NO. C291090

**GBA**  
GEORGE BUTLER ASSOCIATES  
CONSULTING ENGINEERS/ARCHITECTS  
LANDSCAPE ARCHITECTS/PLANNERS

OFFICES:  
SUITE 305-A FAIRWAY OFFICE CENTER  
4210 JOHNSON DRIVE / SHAWNEE MISSION / KANSAS 66205  
1100 CITY CENTER SQUARE  
1100 MAIN / KANSAS CITY / MISSOURI 64105  
SUITE 134 LAKESIDE PLAZA II  
6700 CORPORATE DRIVE / KANSAS CITY / MISSOURI 64120

WASTEWATER TREATMENT  
PLANT EXPANSION

DRIVEWAY A, B, & C PROFILES

CITY OF O'FALLON, MISSOURI

DESIGNED BY J.E.B. DRAWN BY T.R.Y. CHECKED BY L.A.C.

JOB NO. 75-2065  
DATE July 30, 1981  
SCALE As Shown  
SHEET NO. 57 of 88