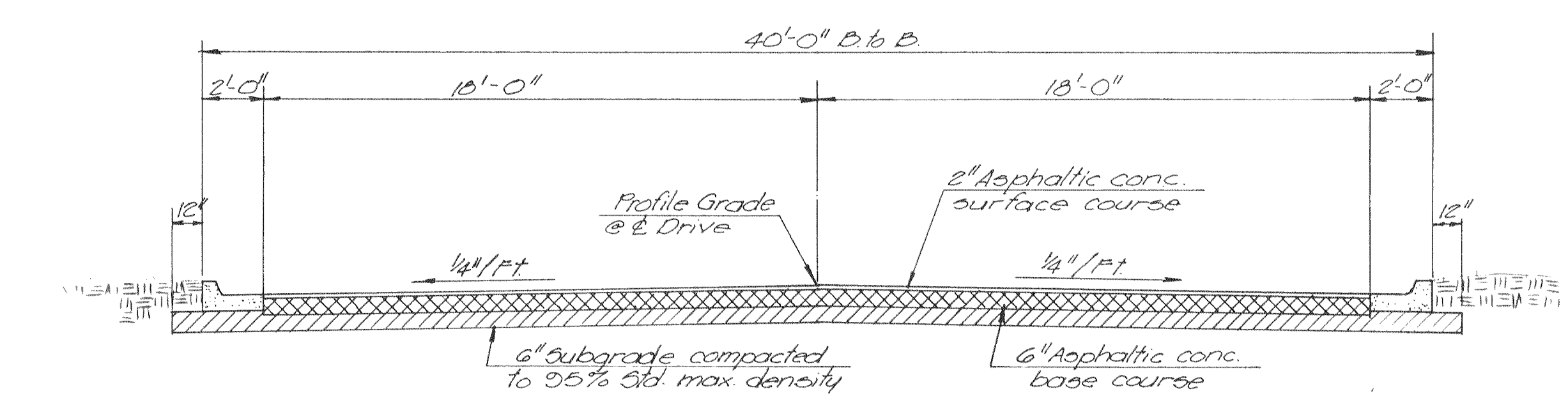
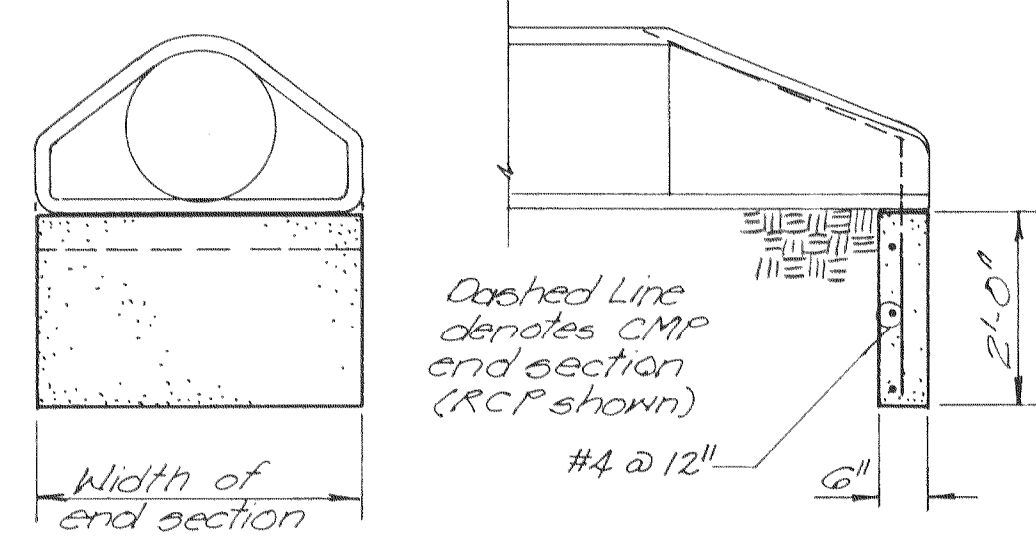


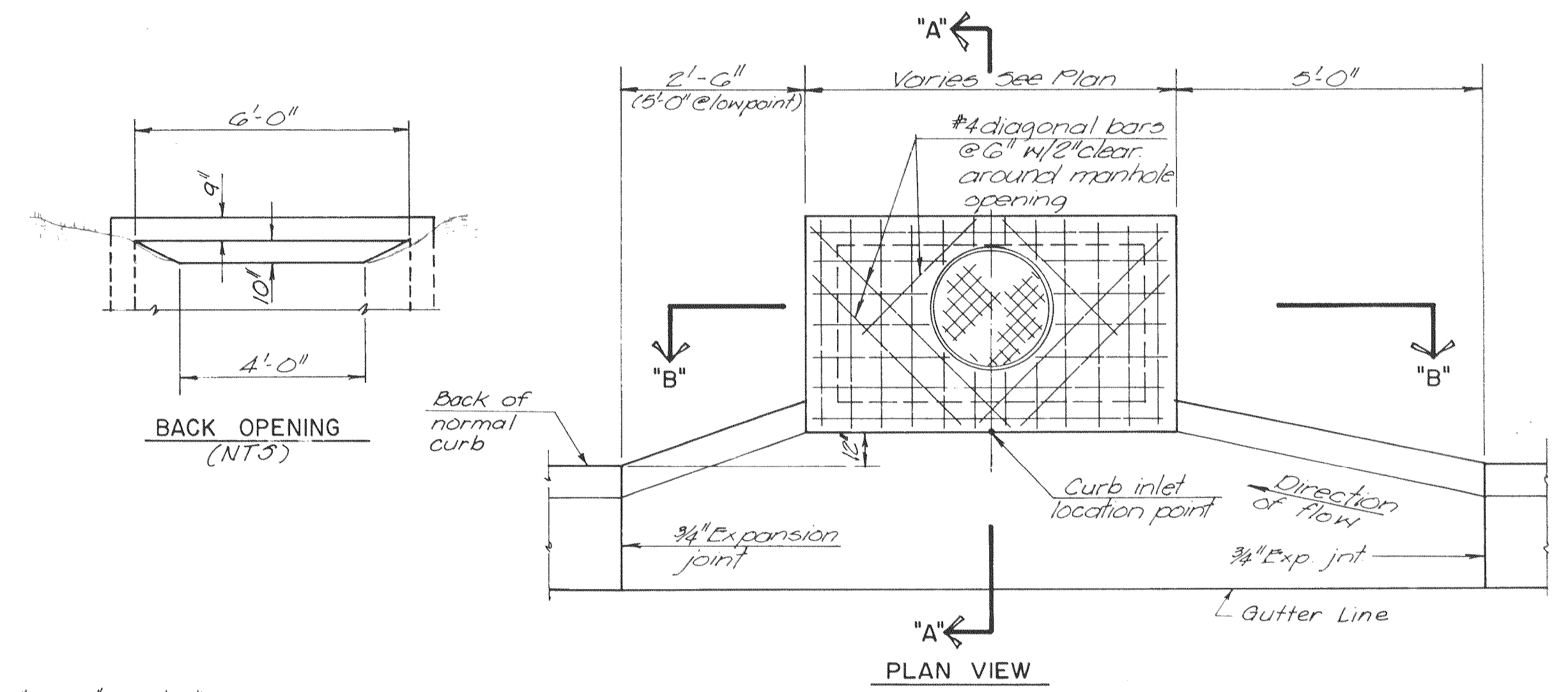
**28' ROADWAY SECTION - FIRMA ROAD, DRIVE "A", & DRIVE "B"**



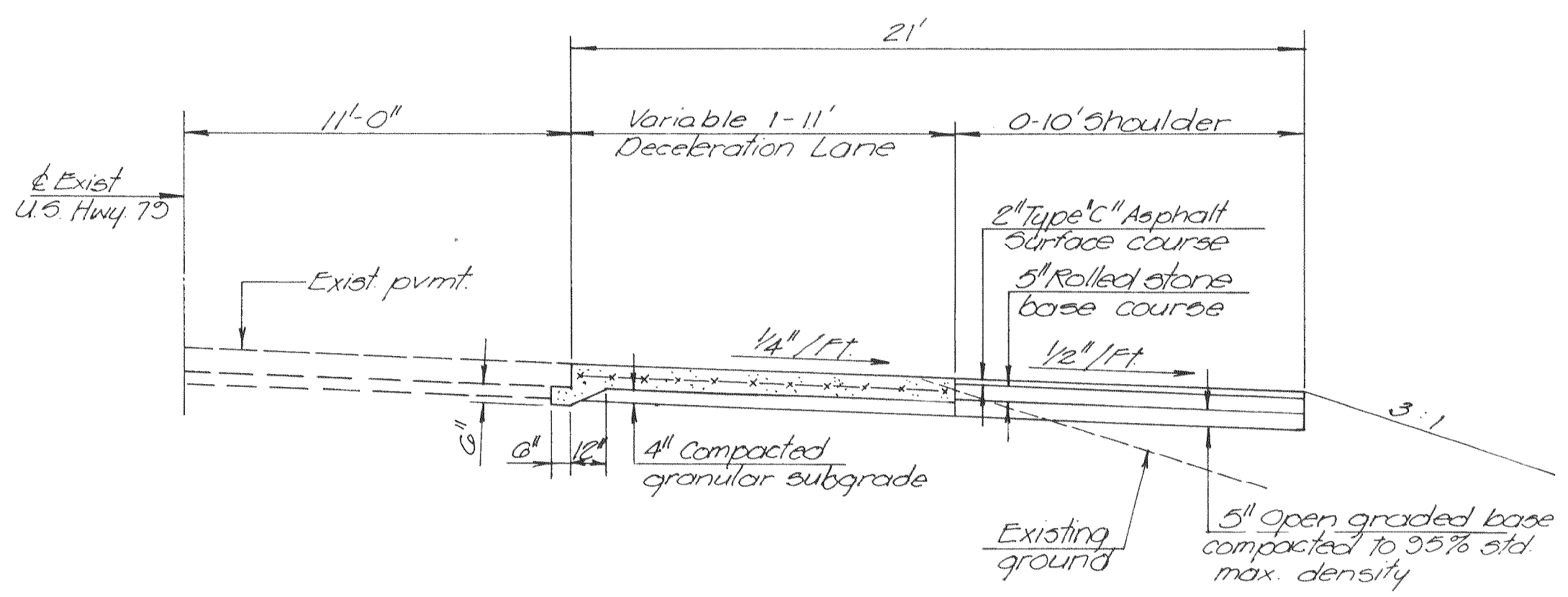
**40' ROADWAY SECTION - DRIVE "C"**



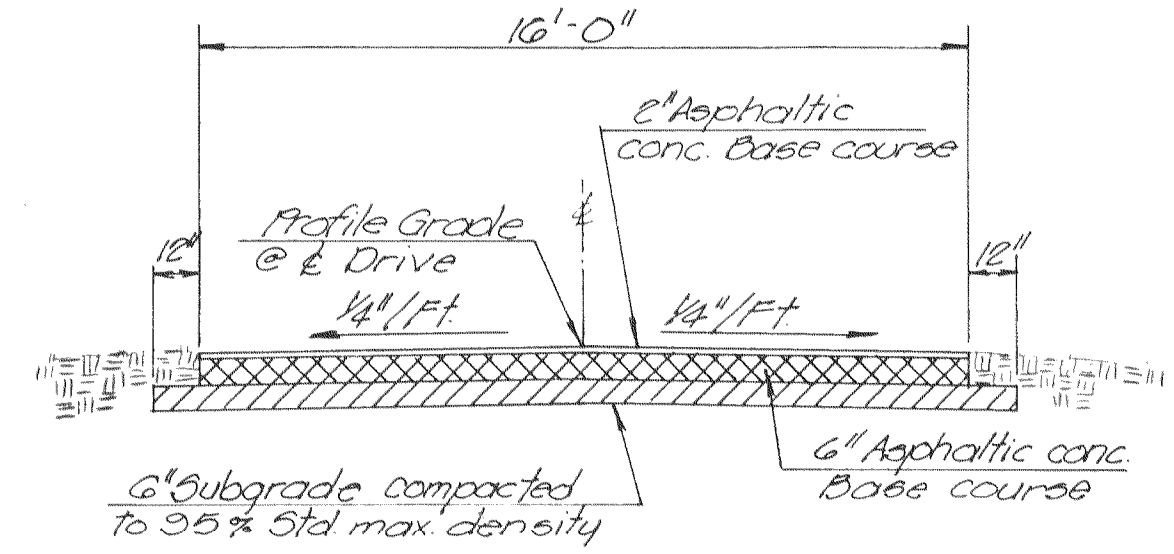
**CONCRETE TOEWALL DETAIL**  
not to scale



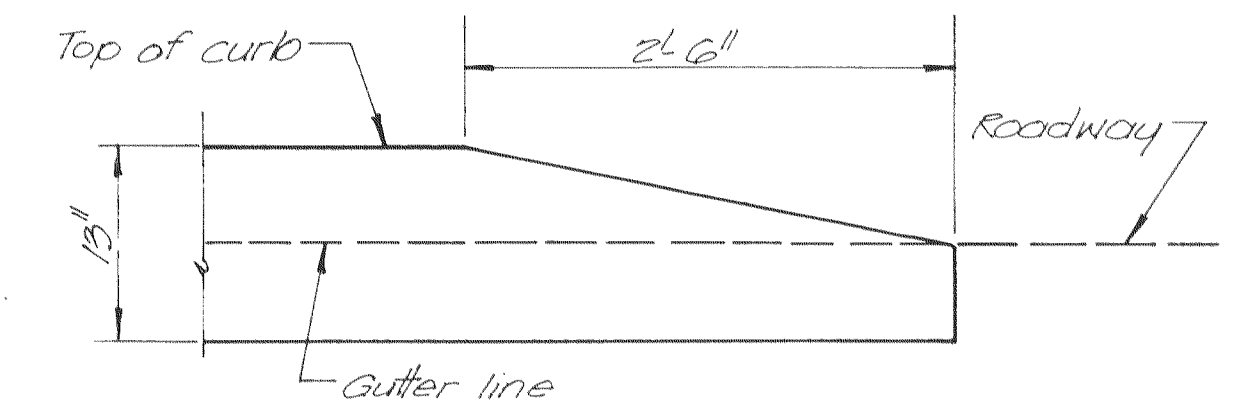
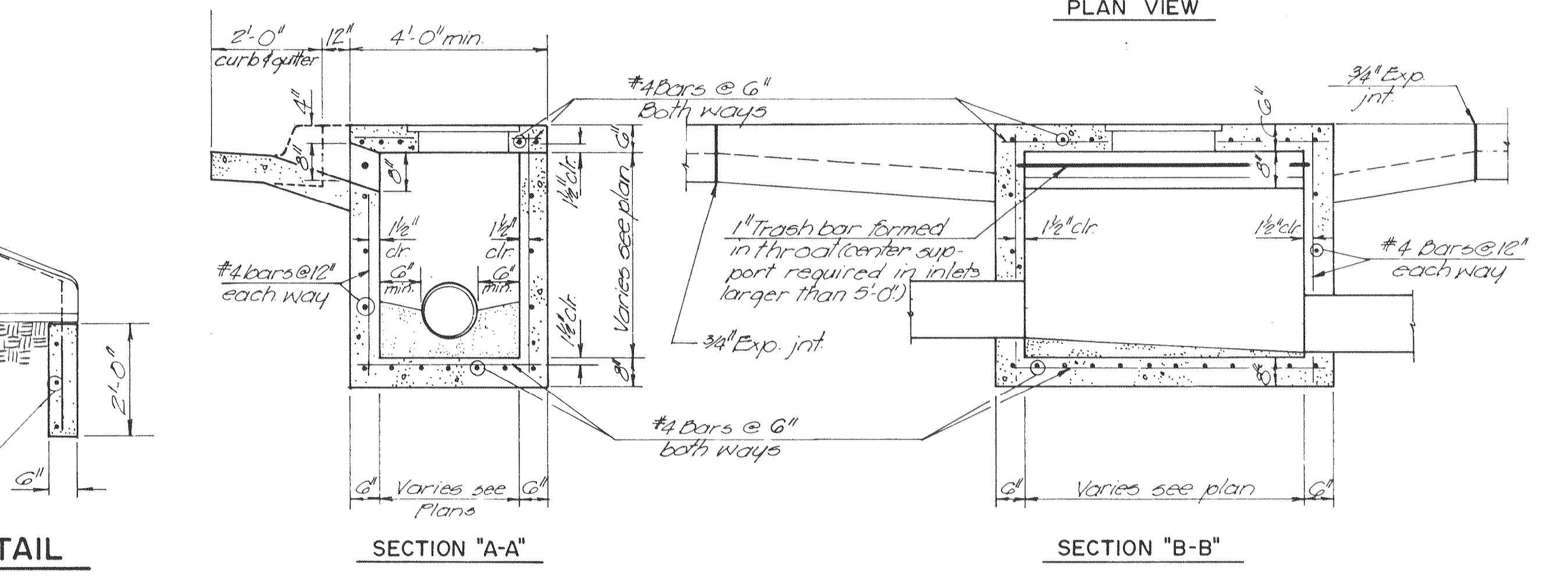
**CURB INLET DETAILS**  
Scale: 1/2" = 1'-0"



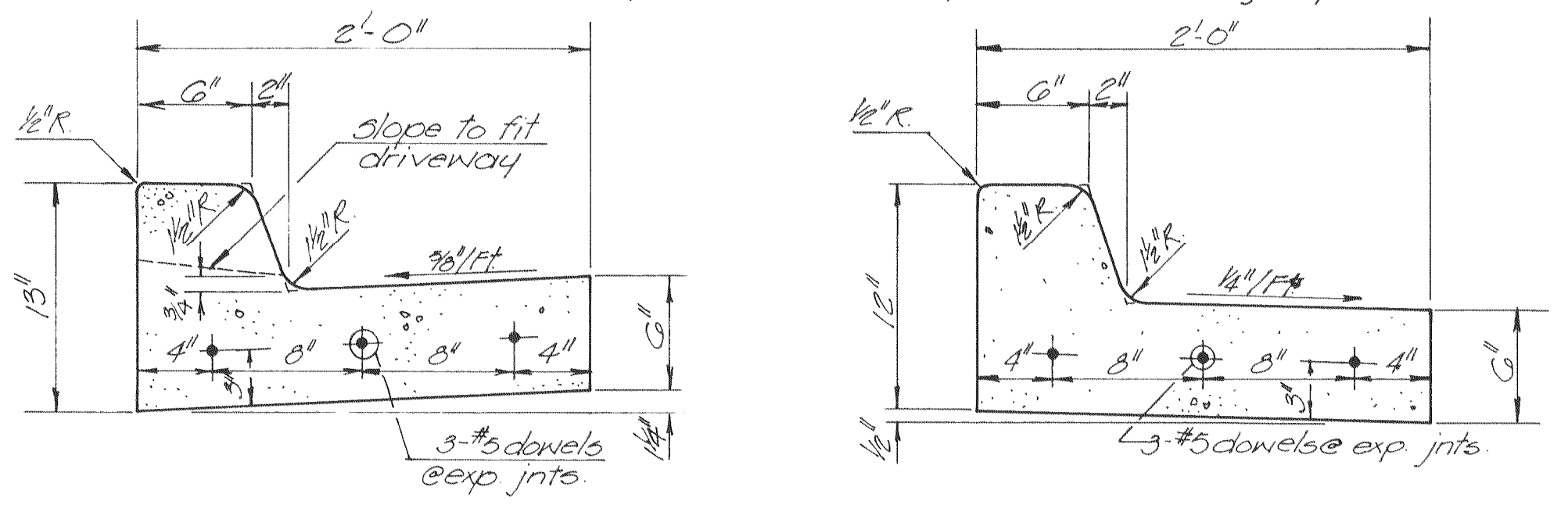
**MO. HWY. 79 DECELERATION LANE SECTION**  
Scale: 1/4" = 1'-0"



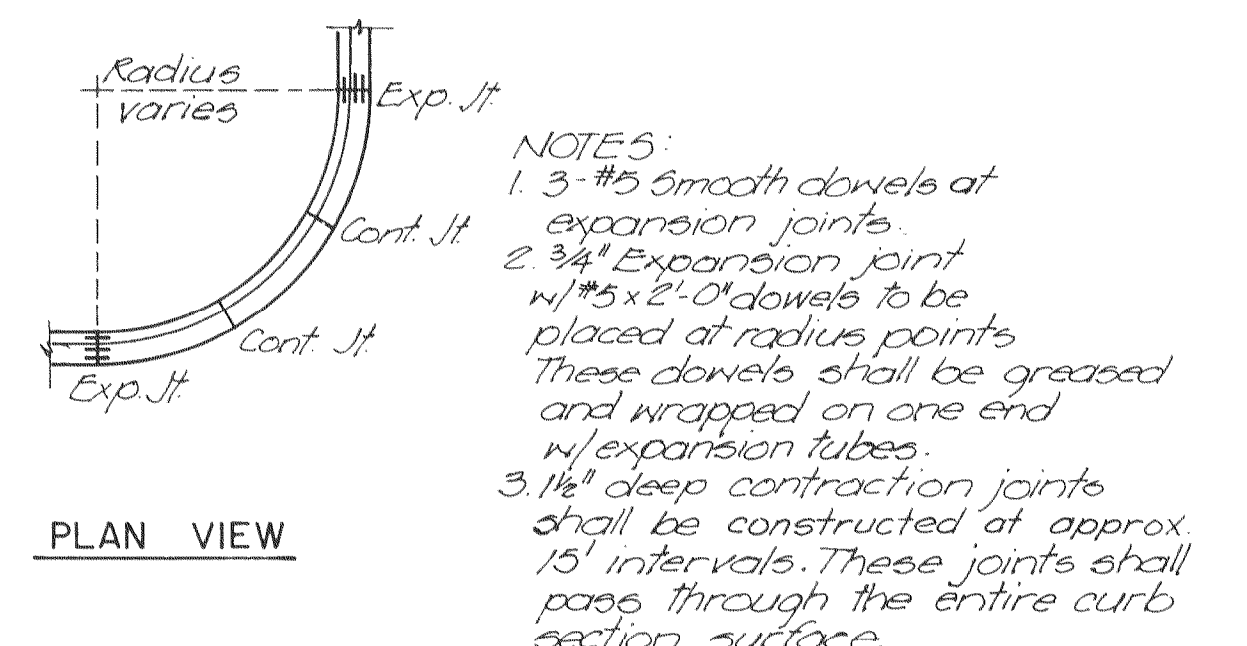
**16' ROADWAY SECTION - DRIVE "A"**  
Scale: 1/4" = 1'-0"



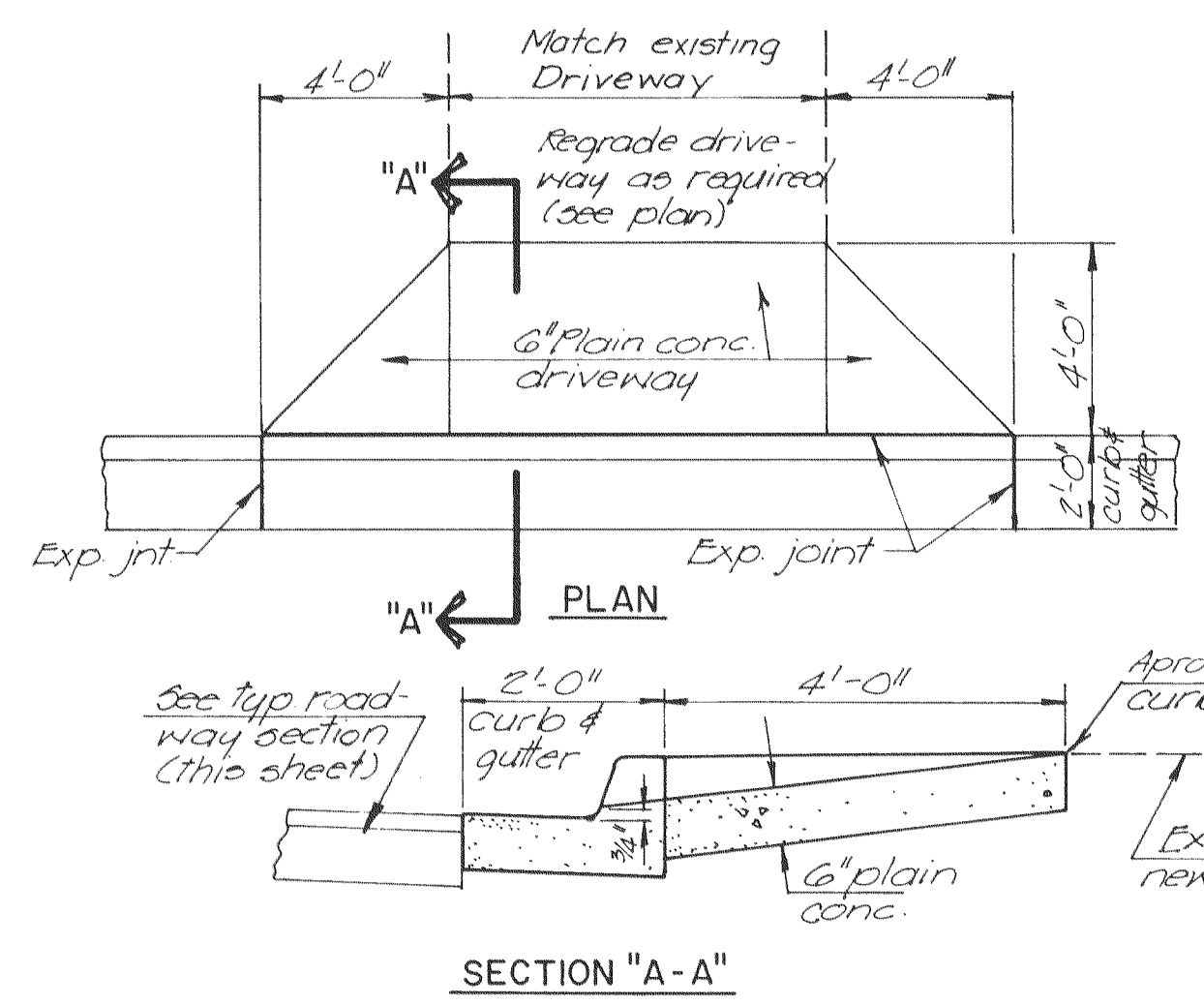
**CURB TAPER DETAIL**  
not to scale



**CURB AND GUTTER DETAILS**



**NOTES:**  
1. 3 #5 smooth dowels at expansion joints  
2. 3/4" expansion joint with 1/2" x 2'-0" dowels to be placed at radius points. These dowels shall be greased and wrapped on one end in expansion tubes.  
3. 1 1/2" deep contraction joints shall be constructed at approx. 15' intervals. These joints shall pass through the entire curb section surface.



**DRIVEWAY ENTRANCE DETAIL**

E.P.A. PROJECT NO. C291090 Rev. 3-82 MKK

**GBA**  
GEORGE BUTLER ASSOCIATES  
CONSULTING ENGINEERS/ARCHITECTS  
LANDSCAPE ARCHITECTS/PLANNERS

OFFICES:  
SUITE 305-A FAIRWAY OFFICE CENTER  
4210 JOHNSON DRIVE / SHAWNEE MISSION / KANSAS 66205  
1100 CITY CENTER SQUARE  
1100 MAIN / KANSAS CITY / MISSOURI 64105  
SUITE 134 LAKESIDE PLAZA II  
6700 CORPORATE DRIVE / KANSAS CITY / MISSOURI 64120

**WASTEWATER TREATMENT PLANT EXPANSION**  
**MISCELLANEOUS ROADWAY SECTIONS & DETAILS**  
CITY OF O'FALLON, MISSOURI

DESIGNED BY N.C.C. DRAWN BY C.Raya CHECKED BY W.A.C.

JOB NO. 75-2065  
DATE July 30, 1981  
SCALE As shown  
SHEET NO. 60 OF 88