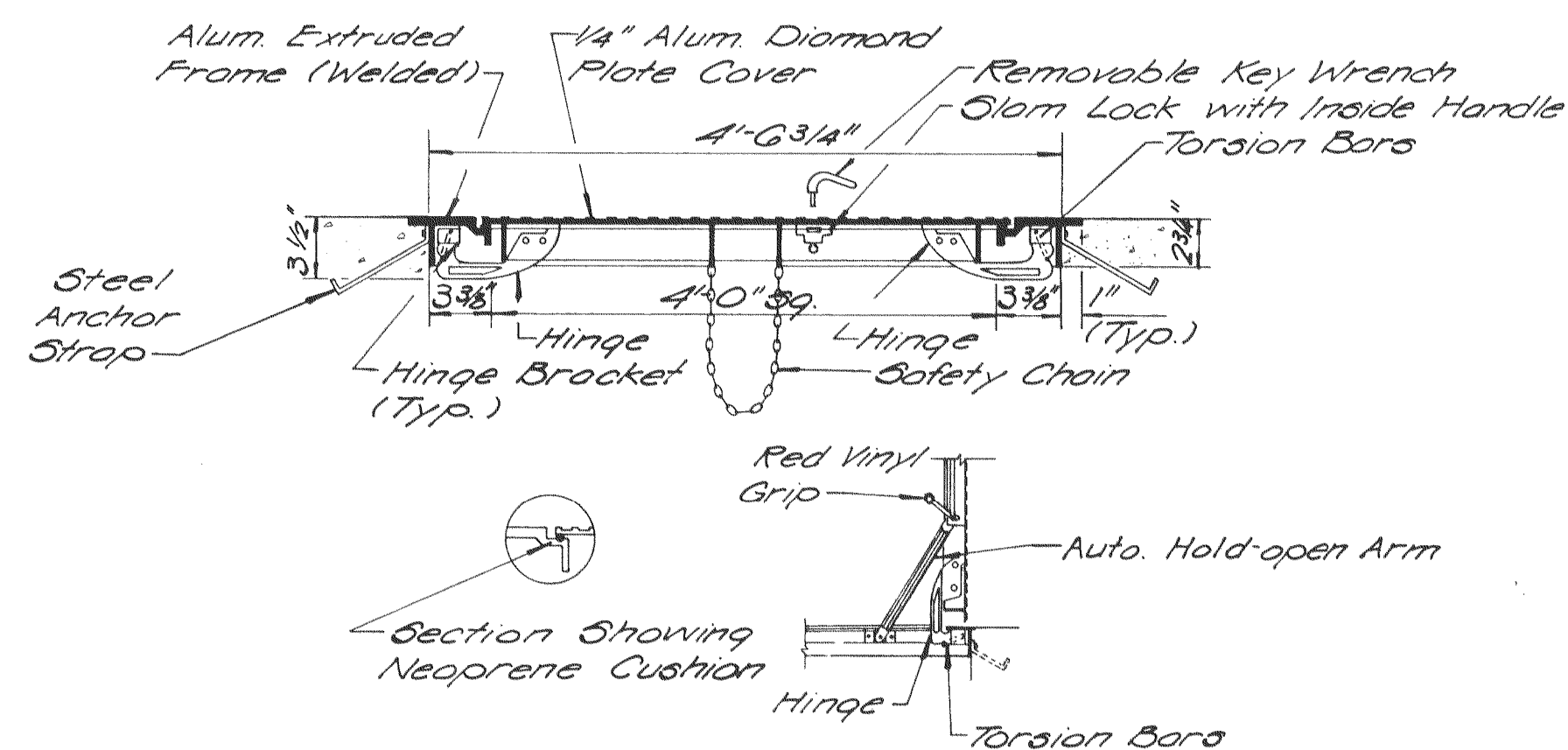
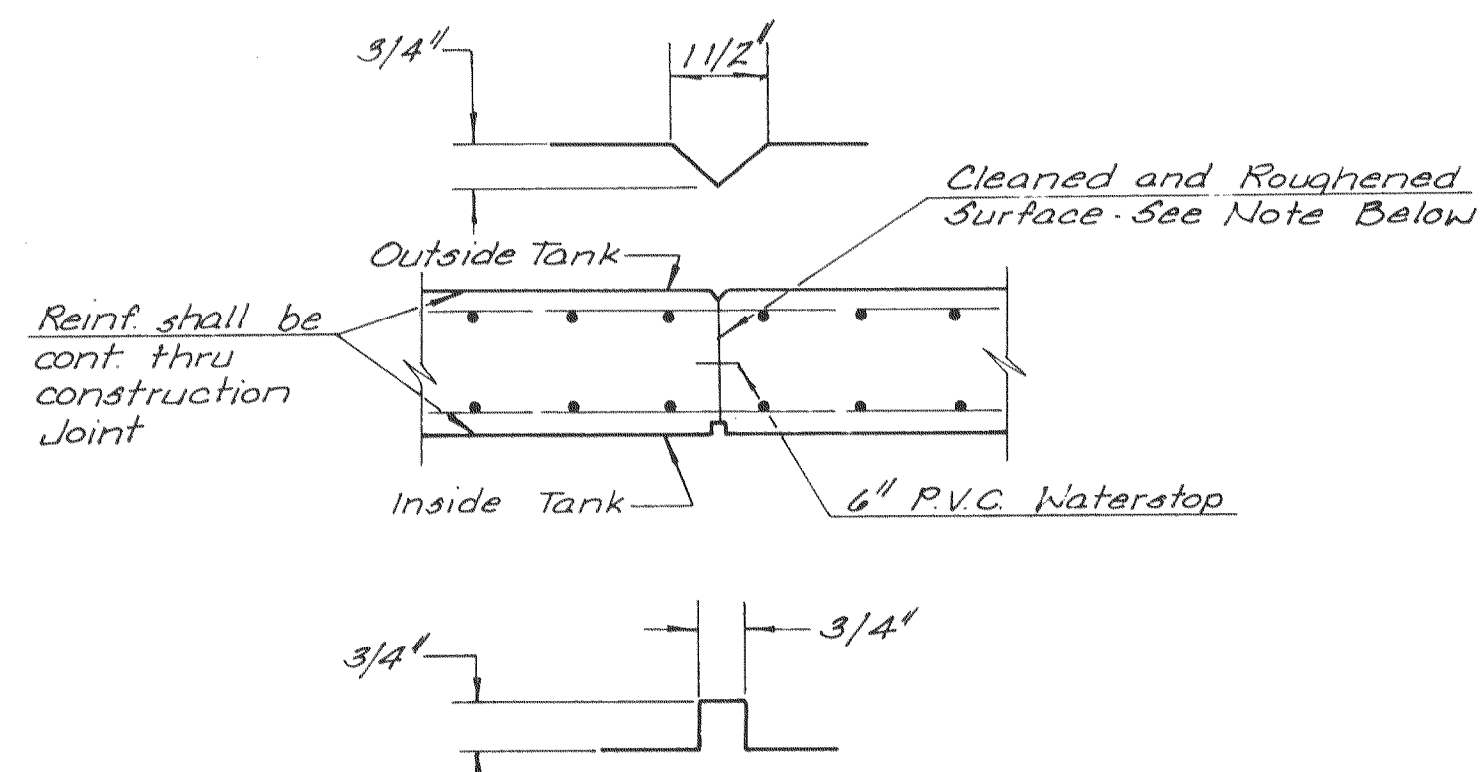


TYPICAL OUTDOOR INSTALLATION OF SCUM PIT
No Scale.

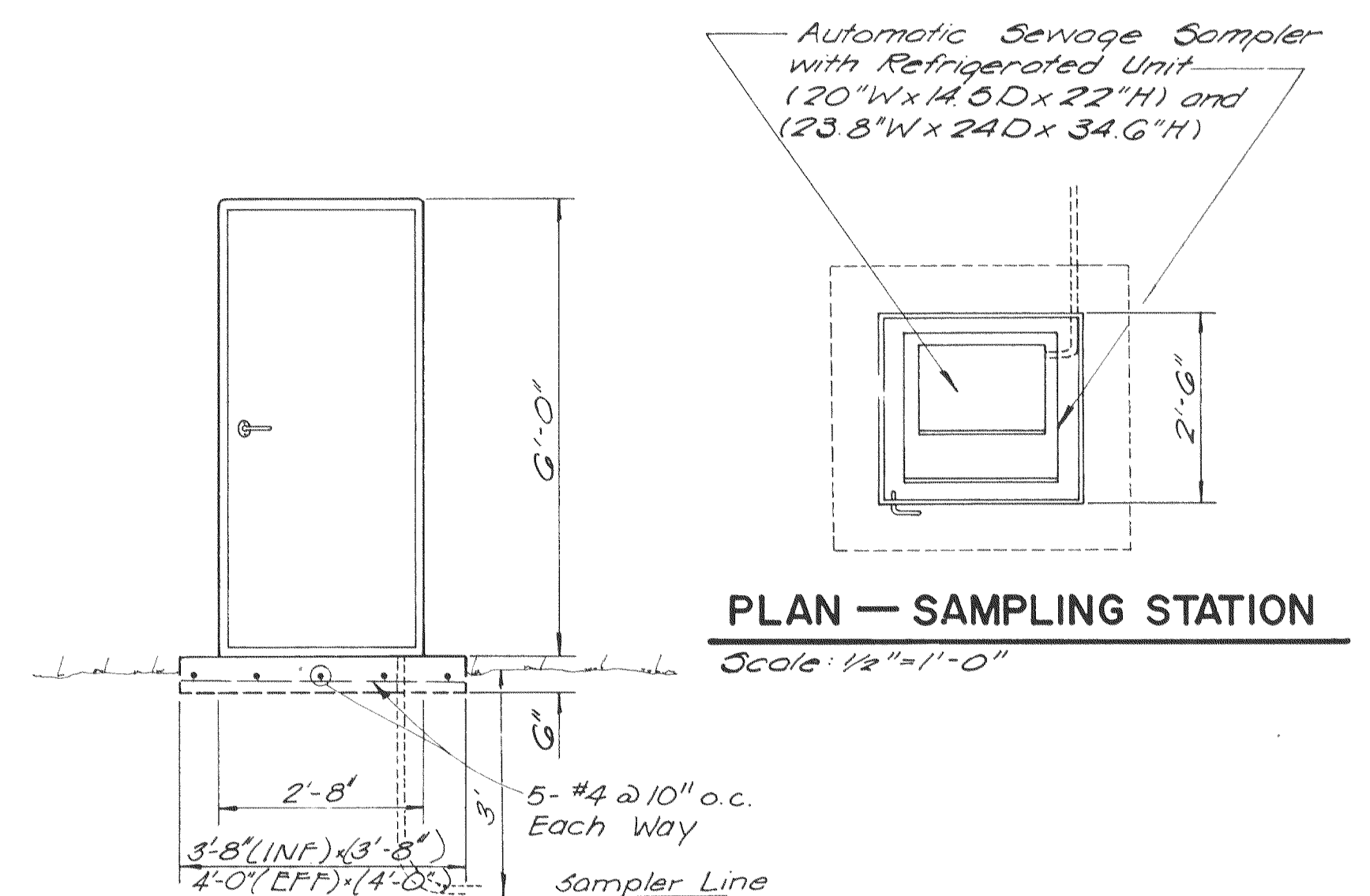


HATCHWAY
No Scale
Ground Floor Access Door @ Operating Floor of Bio-Filter Complex.



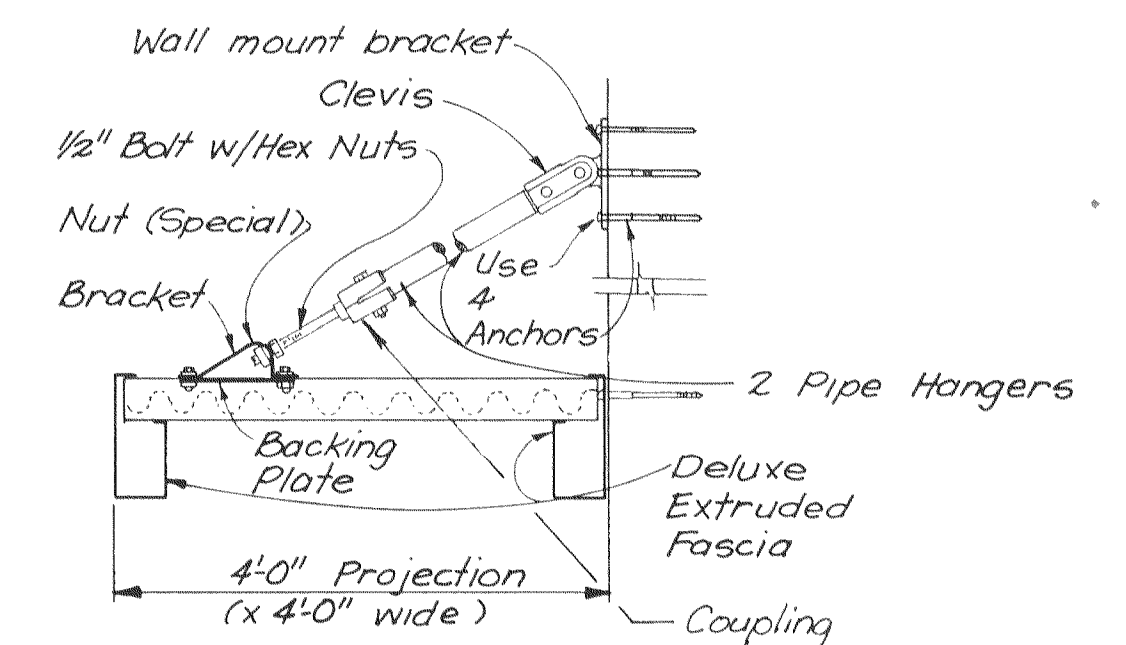
CONSTRUCTION JOINT DETAIL

NOTE: After concrete is placed and just before initial set (approximately 6 hours) roughen and thoroughly clean construction joint surface with pressure water jet. After joint is cleaned and roughened, cover the joint and within 14 days. Just prior to placing adjacent pours, flush joint surface with 1/2 portland cement mortar. Vibrate adjacent concrete against joint and keep moist for 7 days.



Automatic Sewage Sampler Schedule			
Location	Type of Sample	Sampling Point	Control
Comminutor & Meter Vault	Plant influent	Downstream of Comminutors	See Note
Distribution Box No. 3	Plant effluent	Junction Box No. 3	

Note: Samplers shall be controlled either by time via a built-in timer or by flow proportioning via a 4-20 ma signal from the totalized flow from the two flow meters.



OVERHEAD SUPPORTED ALUMINUM CANOPY
N.T.S.

EPA PROJECT NO. C291090

Rev. 3-82 MKL

GBA

GEORGE BUTLER ASSOCIATES
CONSULTING ENGINEERS/ARCHITECTS
LANDSCAPE ARCHITECTS/PLANNERS

OFFICES:
SUITE 305-A FAIRWAY OFFICE CENTER
4210 JOHNSON DRIVE / SHAWNEE MISSION / KANSAS 66205
1100 CITY CENTER SQUARE
1100 MAIN / KANSAS CITY / MISSOURI 64105
SUITE 134 LAKESIDE PLAZA II
6700 CORPORATE DRIVE / KANSAS CITY / MISSOURI 64120

WASTEWATER TREATMENT PLANT EXPANSION
MISCELLANEOUS DETAILS
SUMP PUMPS, SAMPLER & HATCHWAY
CITY OF O'FALLON, MISSOURI

JOB NO 79-2065

DATE July 30, 1981

SCALE As shown

SHEET NO. 64 OF 88

DESIGNED BY W. C. C. DRAWN BY J.P.V. CHECKED BY W. A. C.