

EXISTING DETENTION POND

Remove exist 24" Flap gate

Plug exist effluent

Sta. 8+73.22, 24.06' RT.
of Drive "A" (extended)

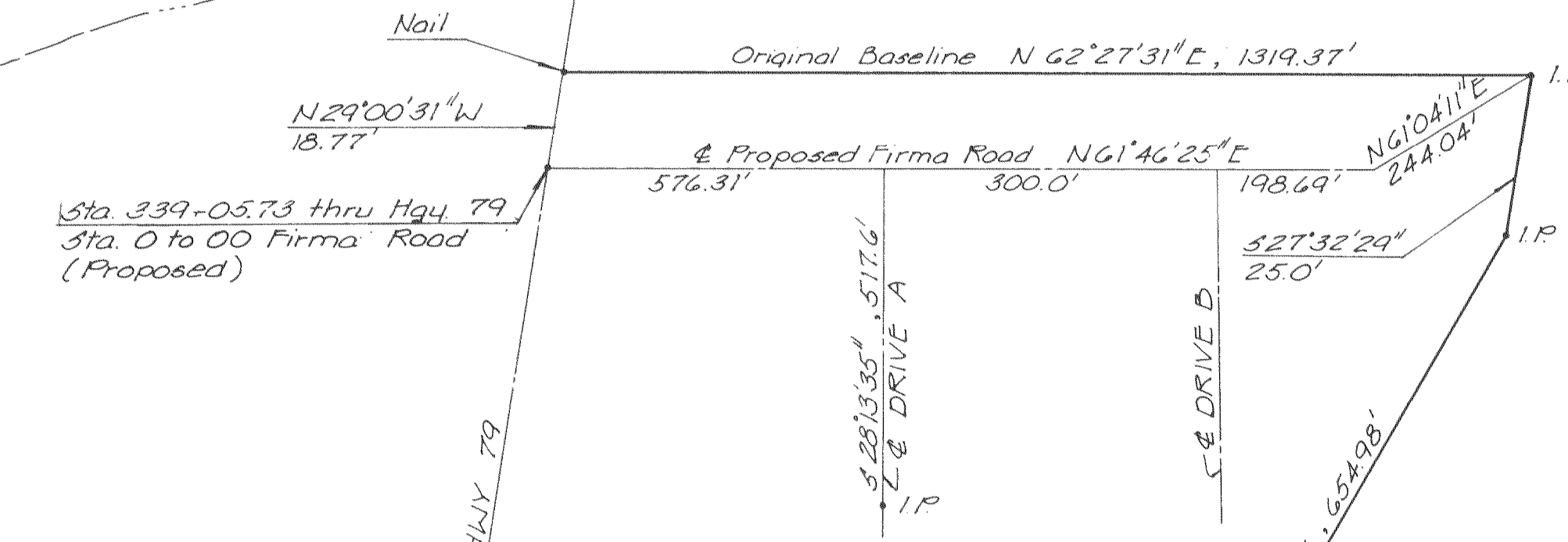
Approx. of Levee Road

of Sta. 8+22.50 of Drive "A"
End Asph. Roadway Const.

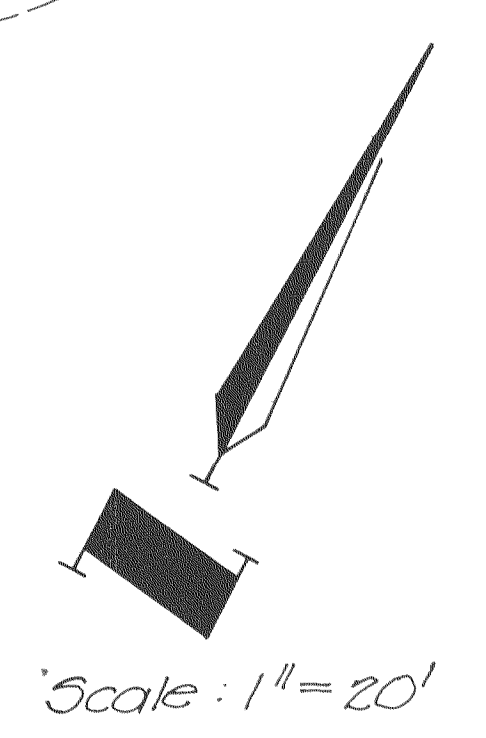
Rip-Rap (See
Detail Sht. 63)

PERUQUE

CREEK



CONTROL PLAN
Not to Scale



Note
Fence, gates, concrete walkways,
and concrete steps are not shown
for clarity. See sheet #4, Site
Grading Plan for locations.

EPA PROJECT NO. C291090		Rev. 2-82 MKK
GBA GEORGE BUTLER ASSOCIATES CONSULTING ENGINEERS/ARCHITECTS LANDSCAPE ARCHITECTS/PLANNERS	OFFICES: SUITE 305-A FAIRWAY OFFICE CENTER 4210 JOHNSON DRIVE / SHAWNEE MISSION / KANSAS 66205 1100 CITY CENTER SQUARE 1100 MAIN / KANSAS CITY / MISSOURI 64105 SUITE 134 LAKESIDE PLAZA II 6700 CORPORATE DRIVE / KANSAS CITY / MISSOURI 64120	
	WASTEWATER TREATMENT PLANT EXPANSION SITE PIPING & DIMENSIONAL PLAN-3 CITY OF O'FALLON, MISSOURI	
DESIGNED BY W.C.C./J.E.B.	DRAWN BY C. RAY	CHECKED BY W.A.C.
JOB NO. 75-2065	DATE July 30, 1981	SCALE 1" = 20'
SHEET NO. 8 OF 88		