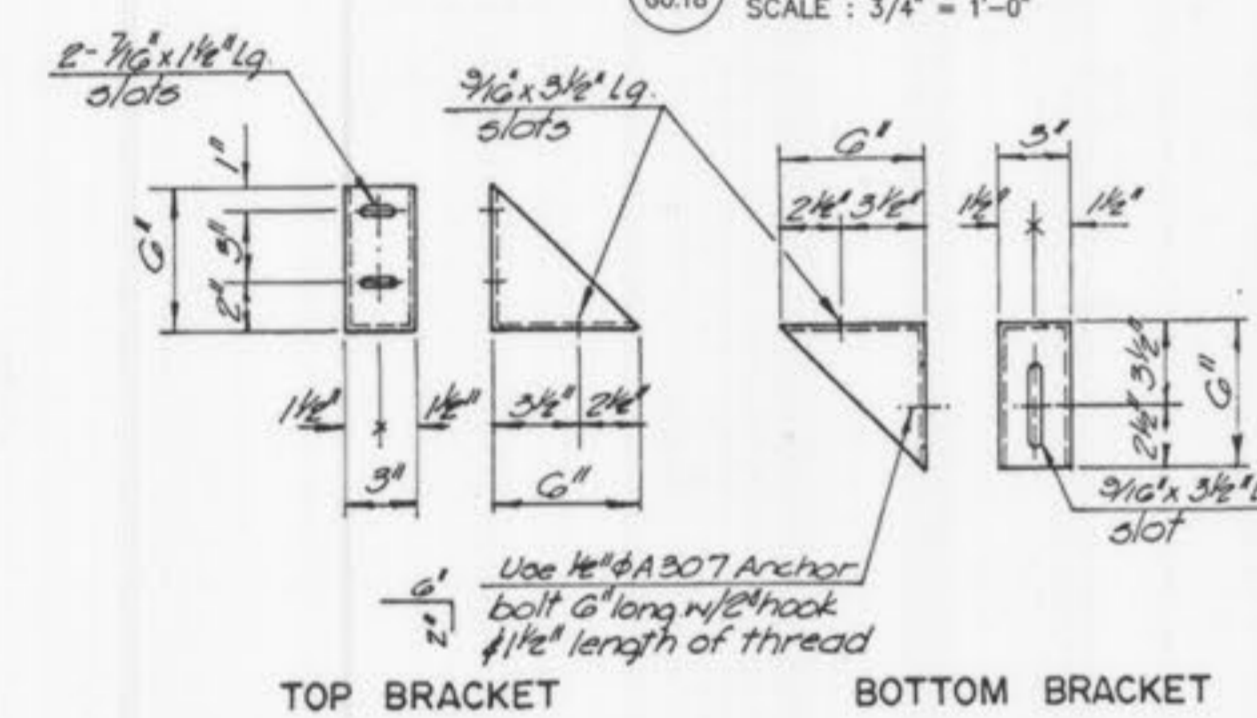
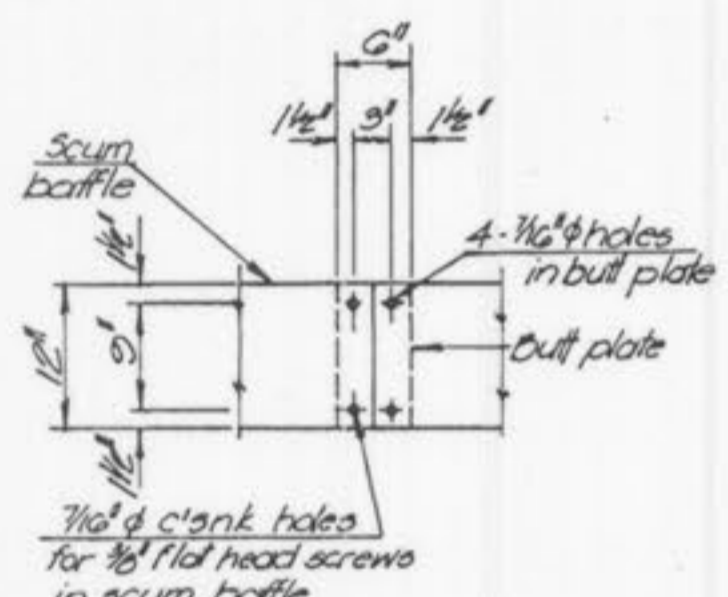


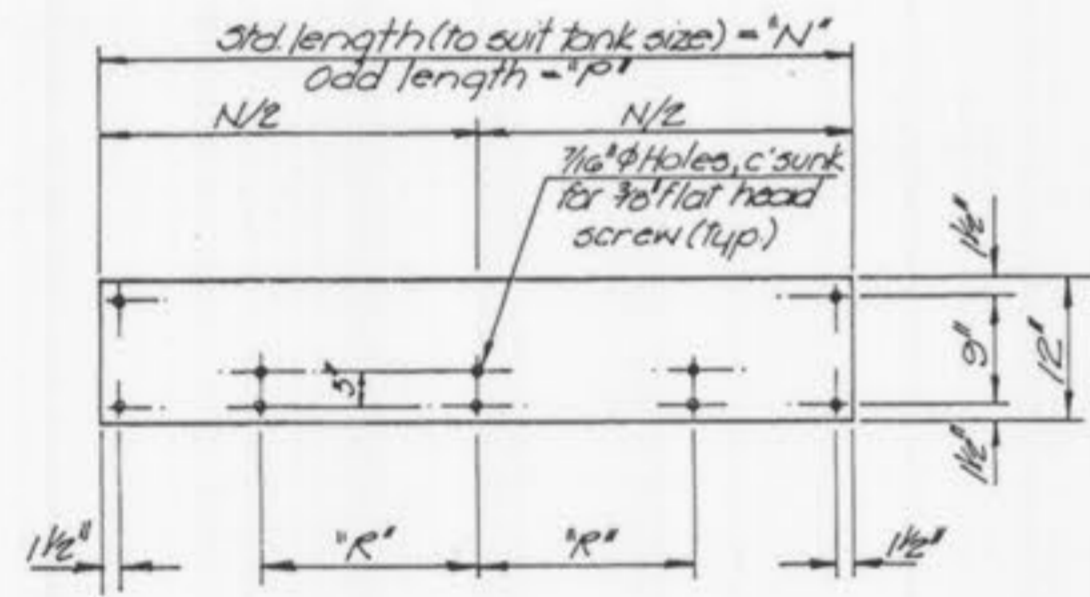
DETAIL
 SCALE: 3/4" = 1'-0"



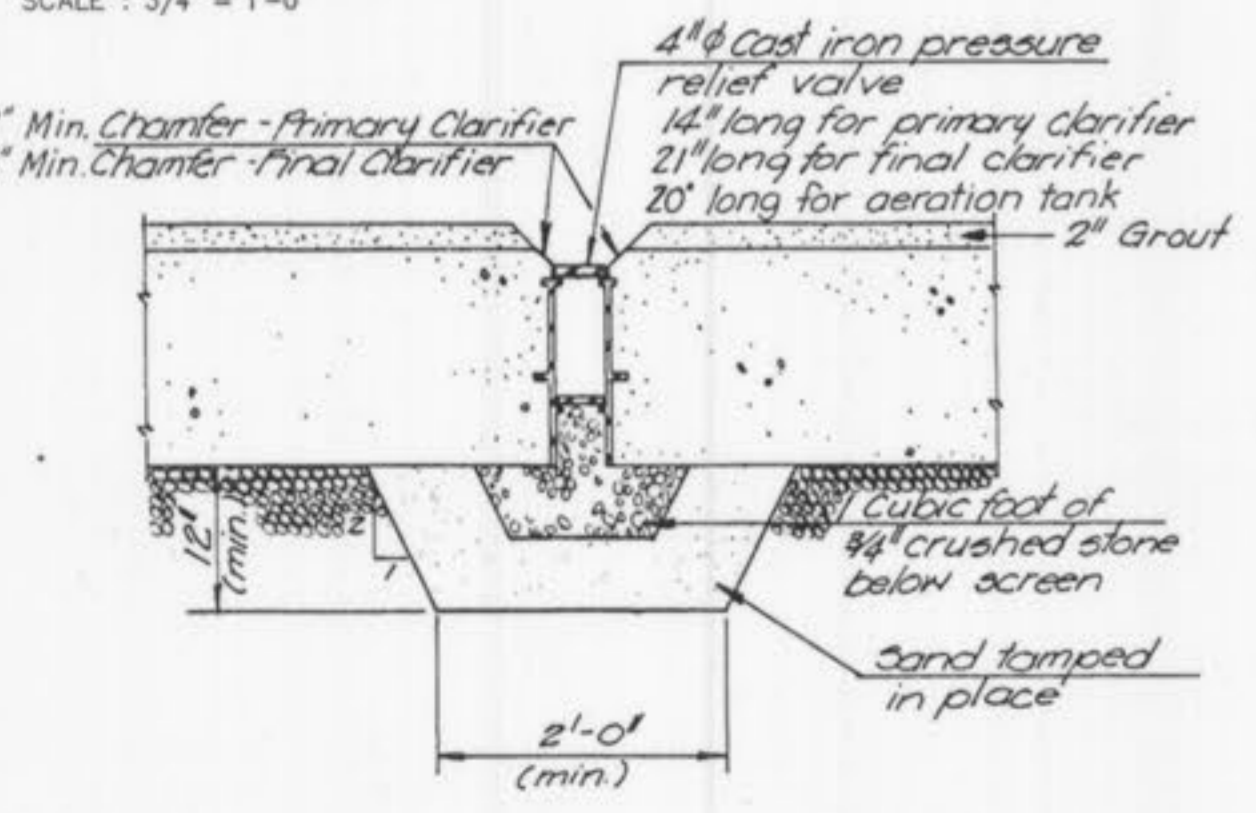
SCUM BAFFLE SUPPORT BRACKET
 SCALE: 1 1/2" = 1'-0"



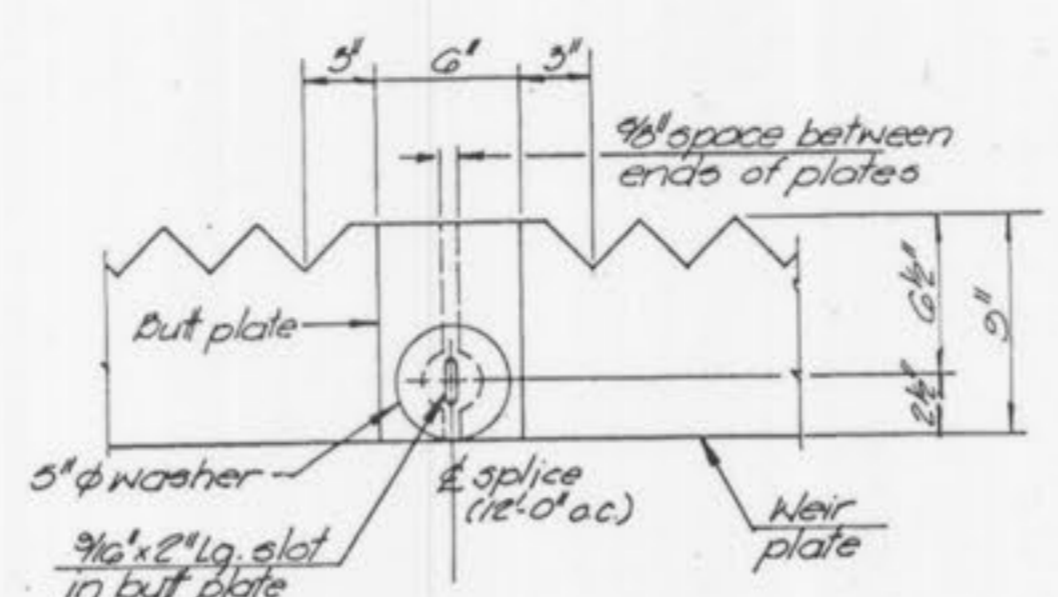
SCUM BAFFLE SPLICE JOINT
 SCALE: 3/4" = 1'-0"



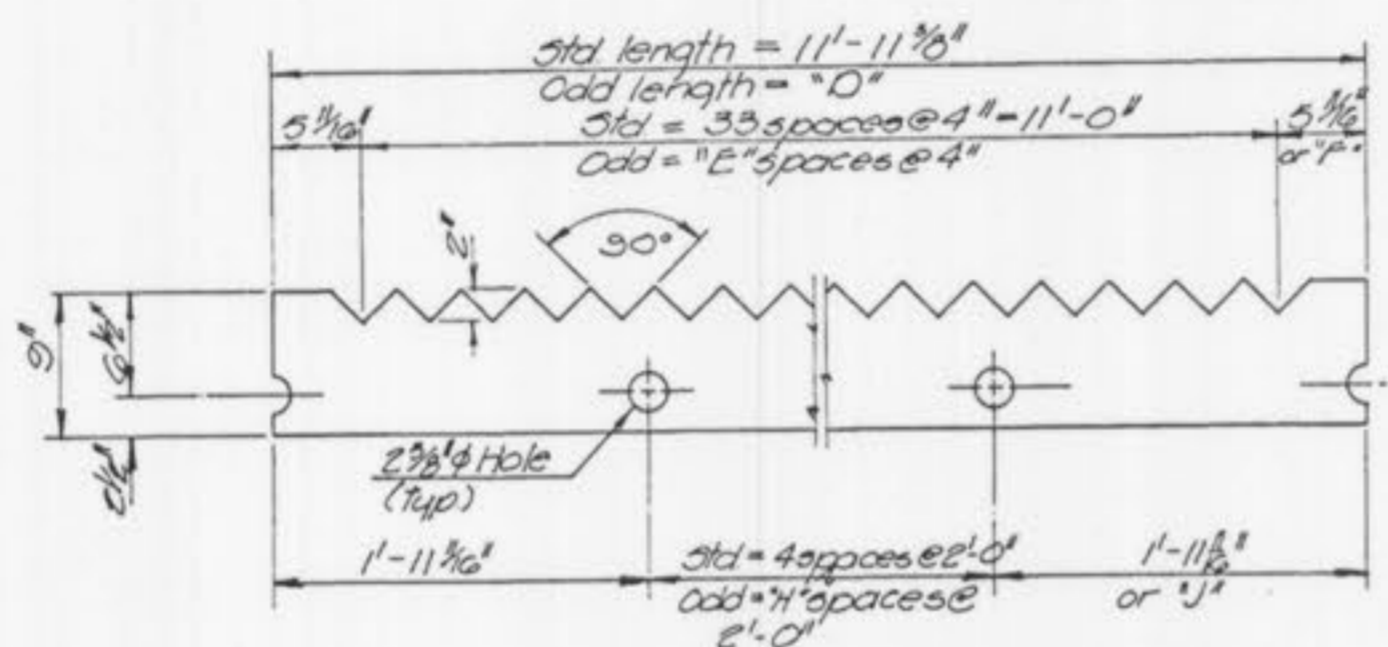
FIBERGLASS SCUM BAFFLE PLATE
 SCALE: 3/4" = 1'-0"



PRESSURE RELIEF VALVE
 SCALE: 3/4" = 1'-0"



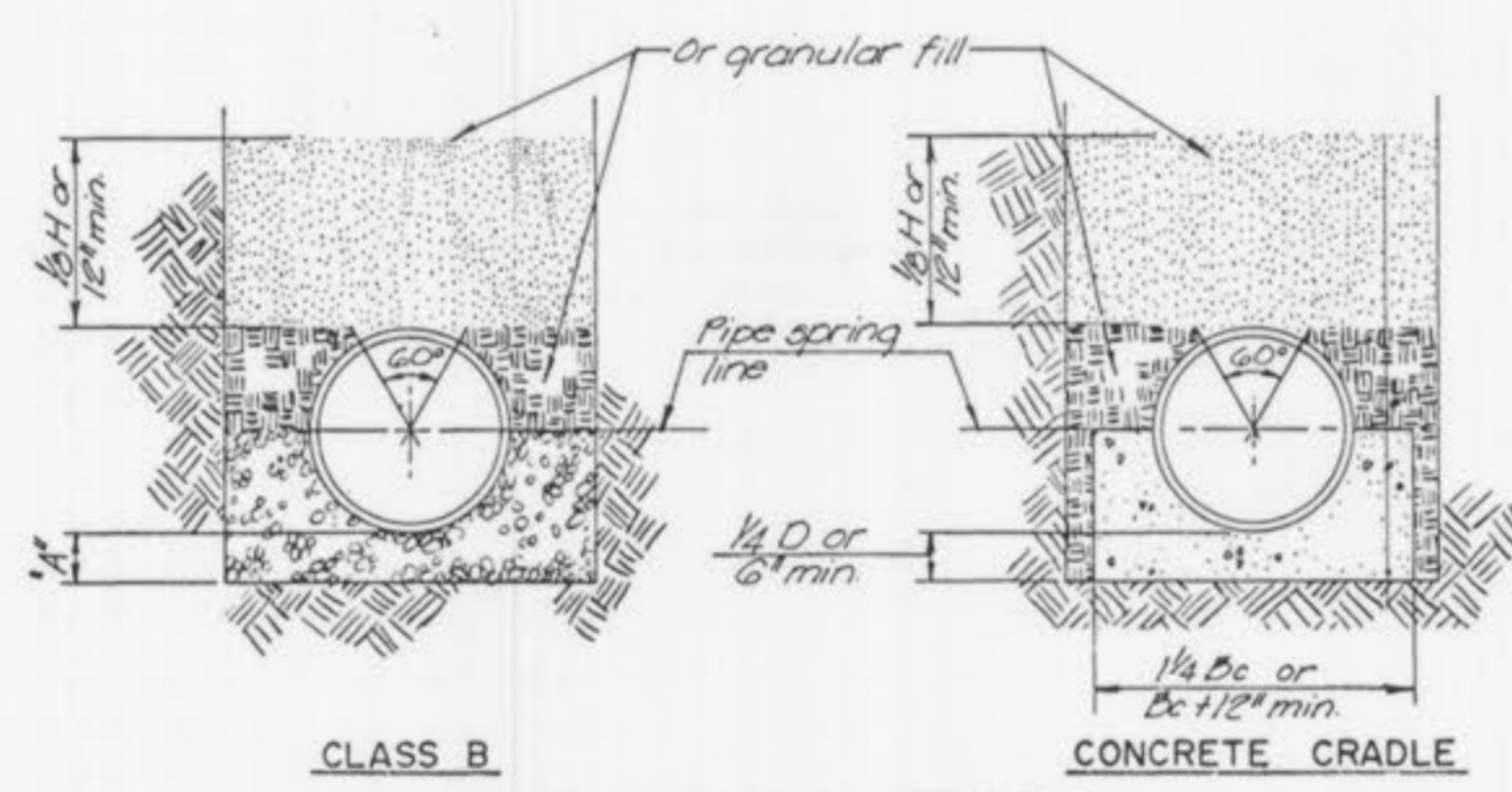
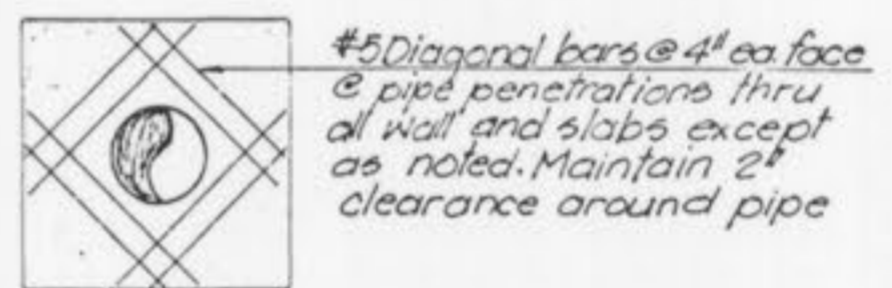
WEIR PLATE SPLICE JOINT
 SCALE: N.T.S.



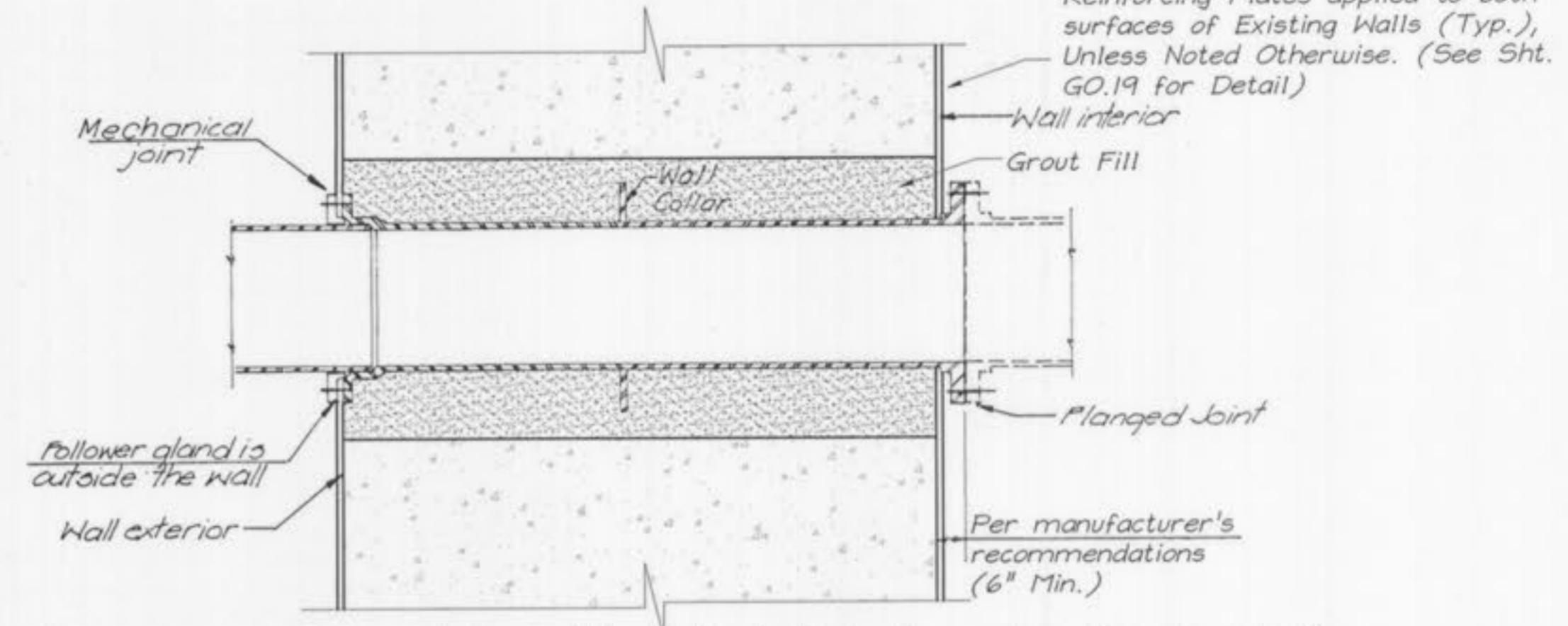
FIBERGLASS WEIR PLATE
 SCALE: 1" = 1'-0"

	D	E	F	H	J	N	P	R
Primary Clarifiers (75' I.D.)	7'-6 3/8"	21	1 3/8"	2	1'-7 7/8"	11'-0 1/2"	7'-5 1/2"	5'-11 1/8"
Final Clarifiers (80' I.D.)	11'-3 3/8"	32	1 3/8"	4	1'-5 3/8"	11'-0 1/2"	11'-1 1/8"	5'

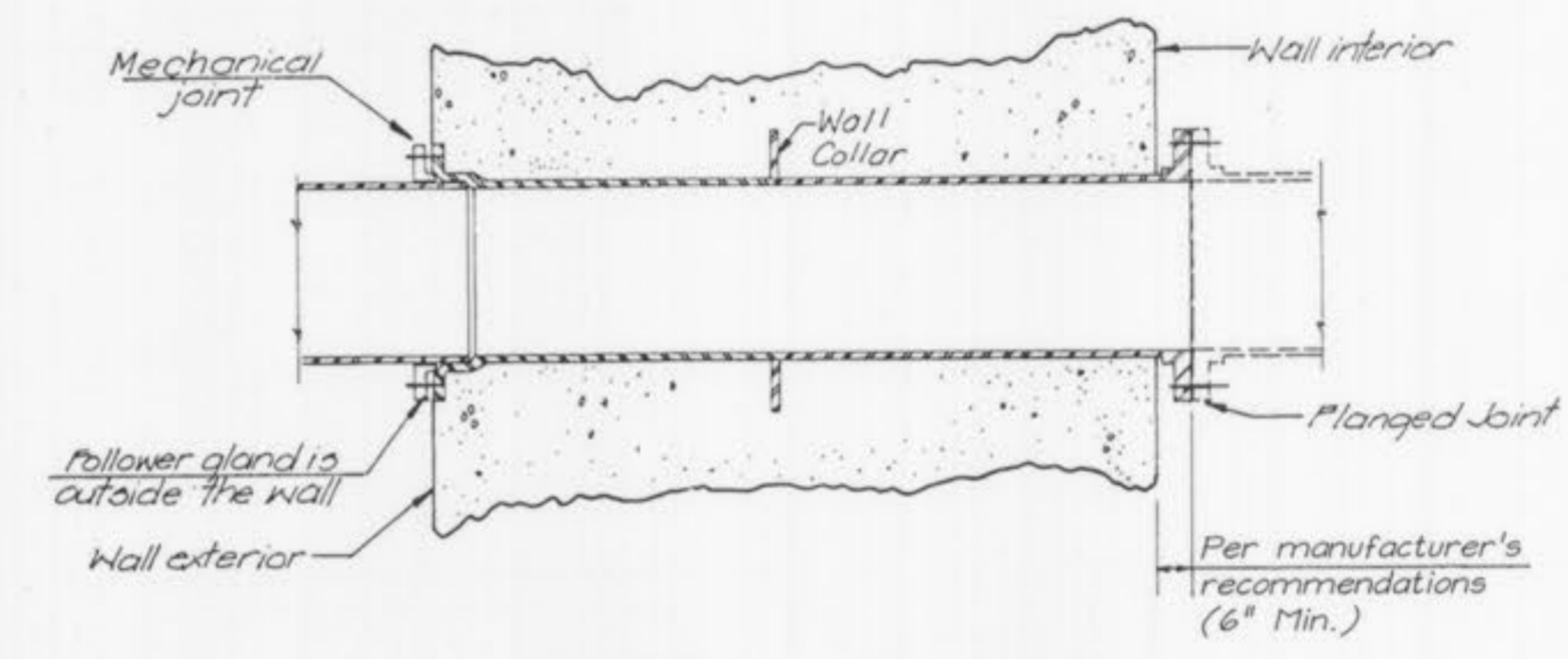
PIPE PENETRATION REINFORCING
 SCALE: N.T.S.



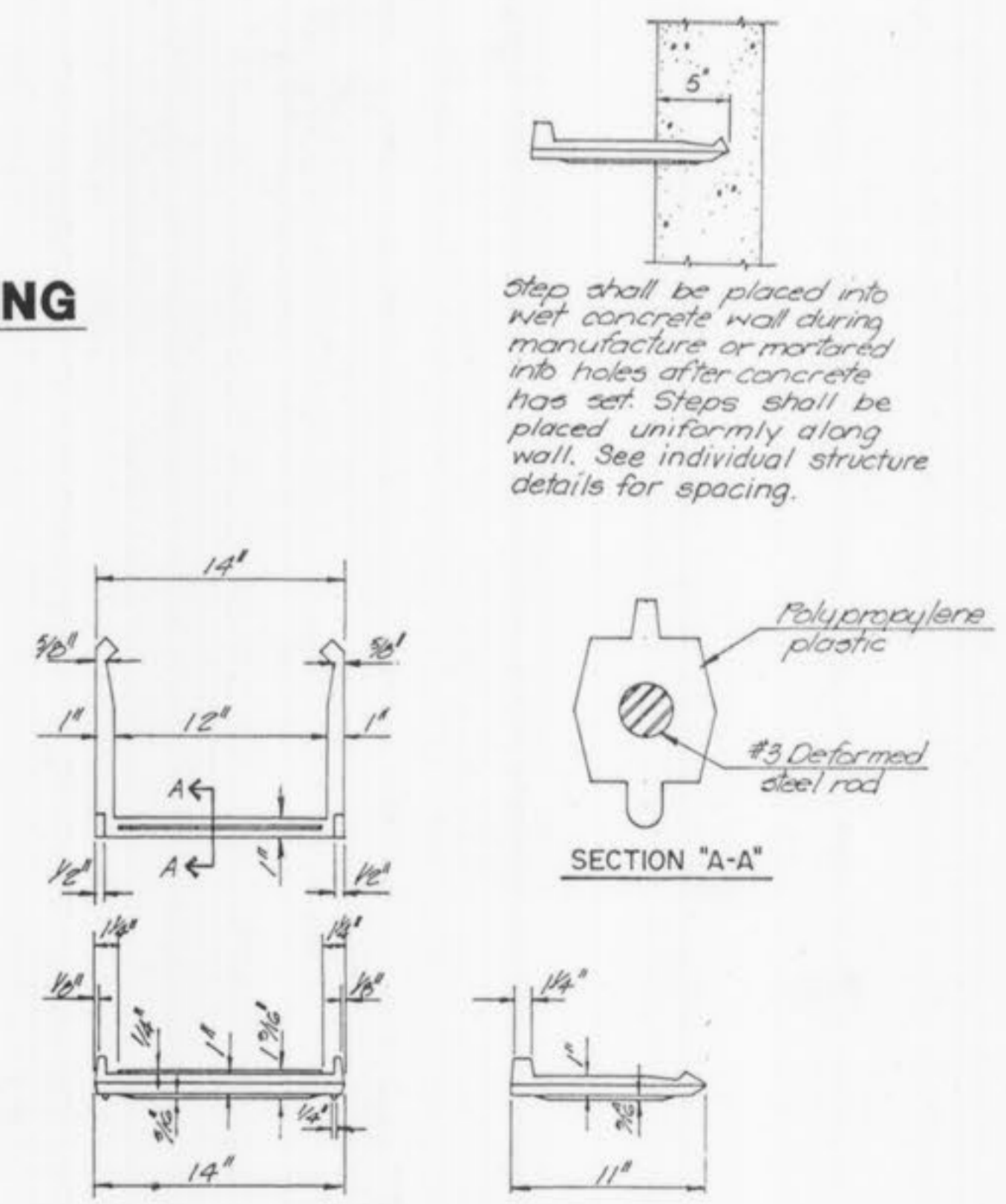
- LEGEND**
- Dc - Outside dia of pipe
 - H - Backfill cover above top of pipe
 - D - Nominal pipe size (see table below)
 - A - Fill below pipe
 - Hand placed backfill
 - Tamped backfill
 - Granular fill
 - Concrete
- TABLE OF FILL BELOW PIPE**
- | "D" | "A" min. |
|---------------|----------|
| 27" & smaller | 3" |
| 30" to 60" | 4" |
| 66" & larger | 6" |
- NOTES**
- GRANULAR FILL to be crushed stone or pea gravel with not less 95% passing 1/2" and not less than 95% to be retained on a #4, to be placed in not more than 6" layers and compacted by slicing with a shovel. (1/2" & #4 refers to sieve size)
 - TAMPED BACKFILL shall be finely divided job excavated material free from debris, organic material and stones, compacted to 95% maximum density as determined by AASHTO Standard Method T-99 Granular fill may be substituted for tamped backfill to top of the pipe.
 - HAND PLACED BACKFILL shall be finely divided material free from debris and stones.
 - All bedding details apply to building sewer service lines as well as other sewers.
 - Concrete cradle shall be used when trench width exceeds 24" plus the pipe diameter.



(Typical for new pipes penetrating existing walls of all structures unless otherwise noted.)
EXISTING WALL PENETRATION W/ WALL PIPE DETAIL
 SCALE: N.T.S.

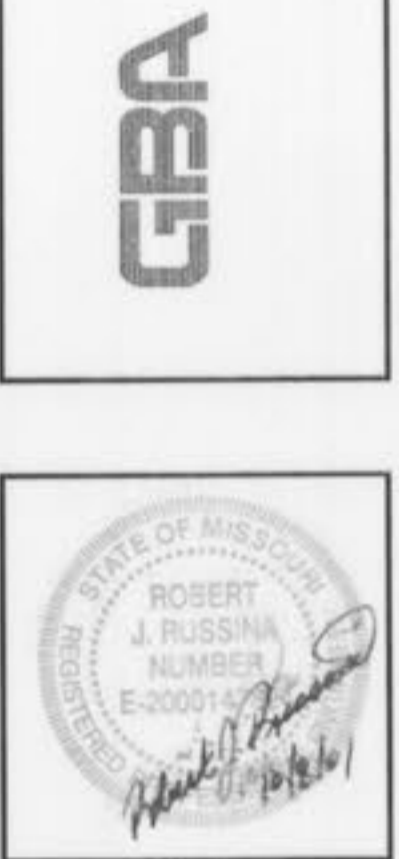


(Typical for pipes penetrating new walls of all structures unless otherwise noted.)
NEW WALL PENETRATION W/ WALL PIPE DETAIL
 SCALE: N.T.S.



TYPICAL MANHOLE STEP DETAIL
 SCALE: N.T.S.

GEORGE BUTLER ASSOCIATES, INC.
 Engineers • Architects
 Kansas • Missouri • Illinois



WASTEWATER TREATMENT PLANT EXPANSION
MISCELLANEOUS DETAILS
 No. 1
 CITY OF FALLON, MISSOURI

JOB NO.: 9234
 DATE: 10-08-2001
 DESIGNED BY: TMS
 DRAWN BY: RGA
 CHECKED BY: RJR/TMS
 SHEET NUMBER
GO.18