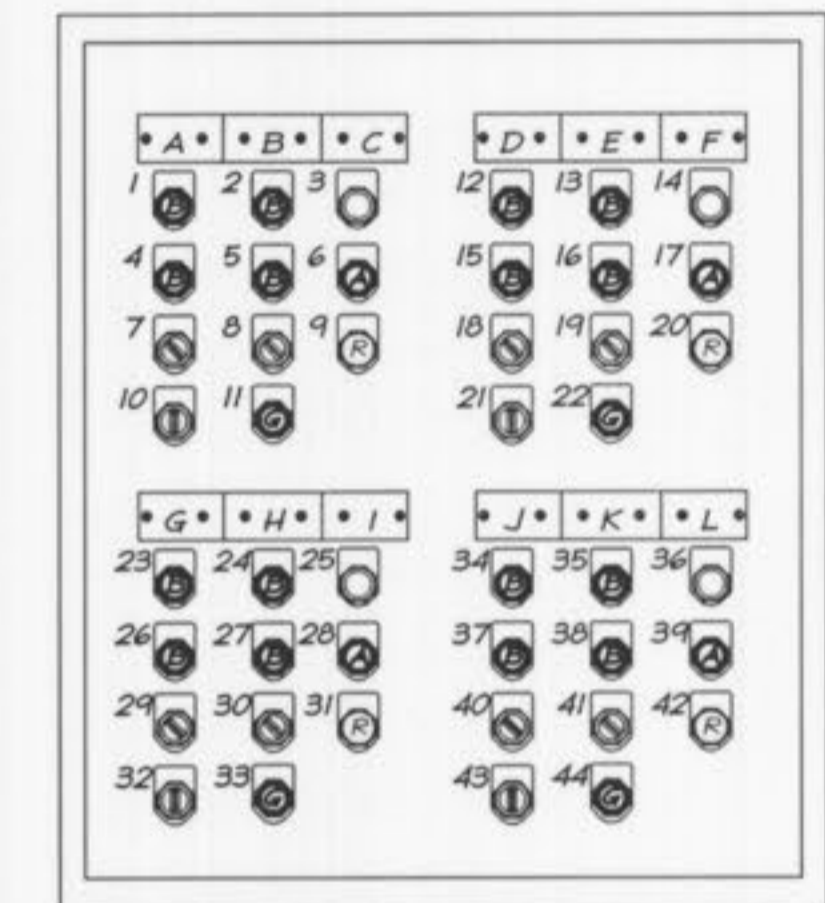
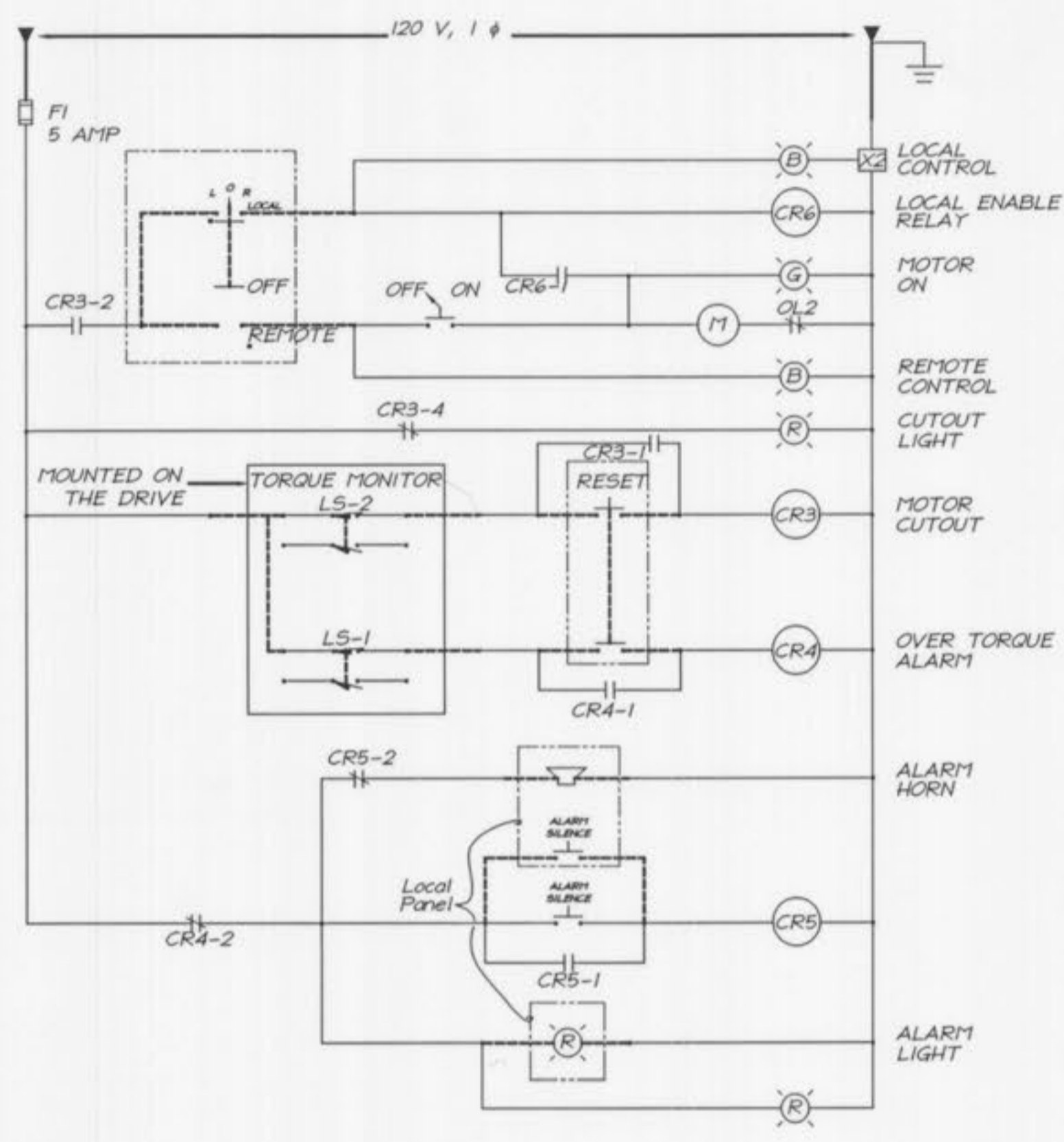
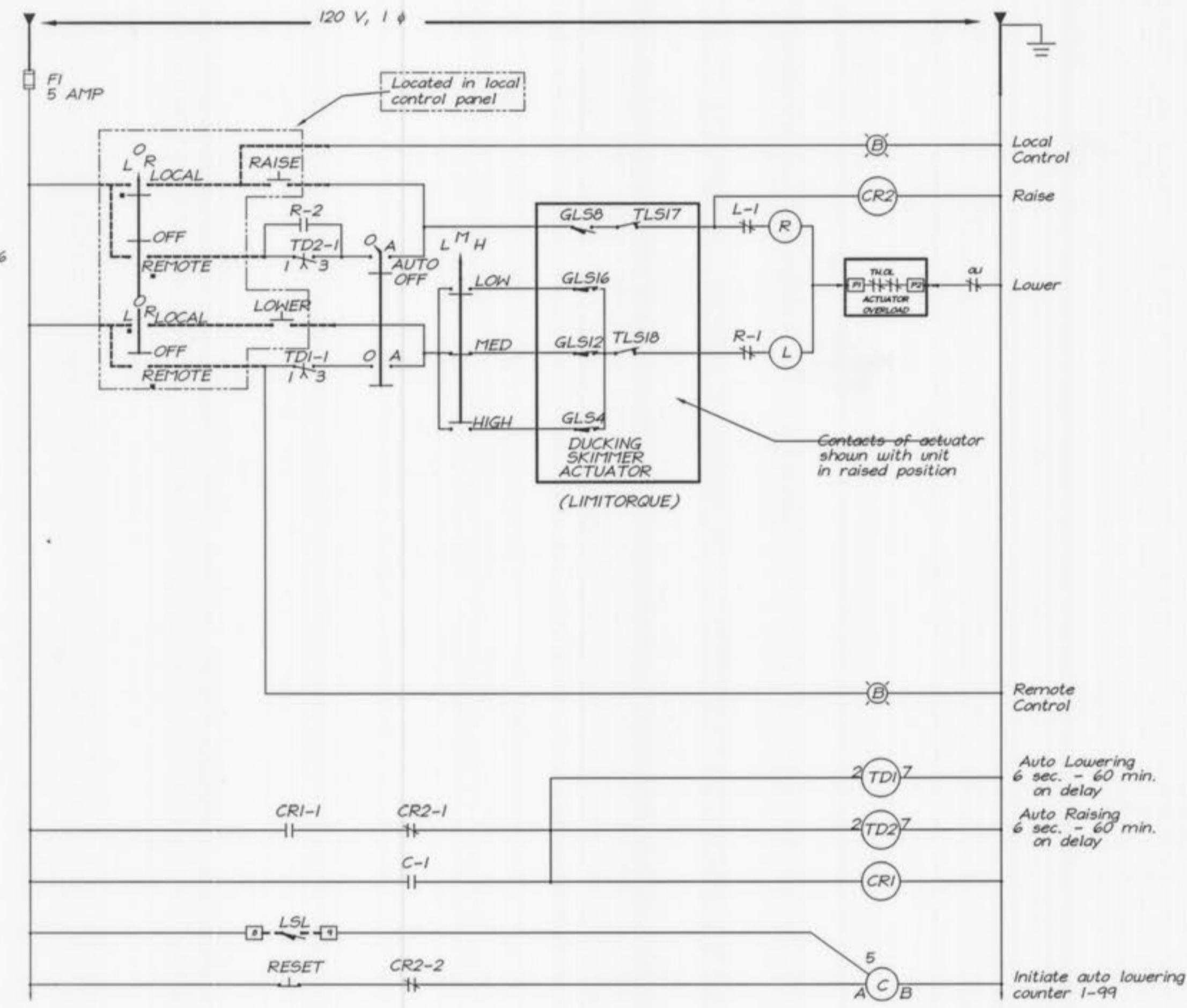


- Notes:
- Wiring and equipment shown with solid line to be furnished by clarifier equipment supplier. Wiring and equipment shown dashed to be furnished and installed by this contractor.
  - Contractor shall install all electrical equipment furnished by others.
  - Local control panels shown shall be NEMA 4X, stainless steel.

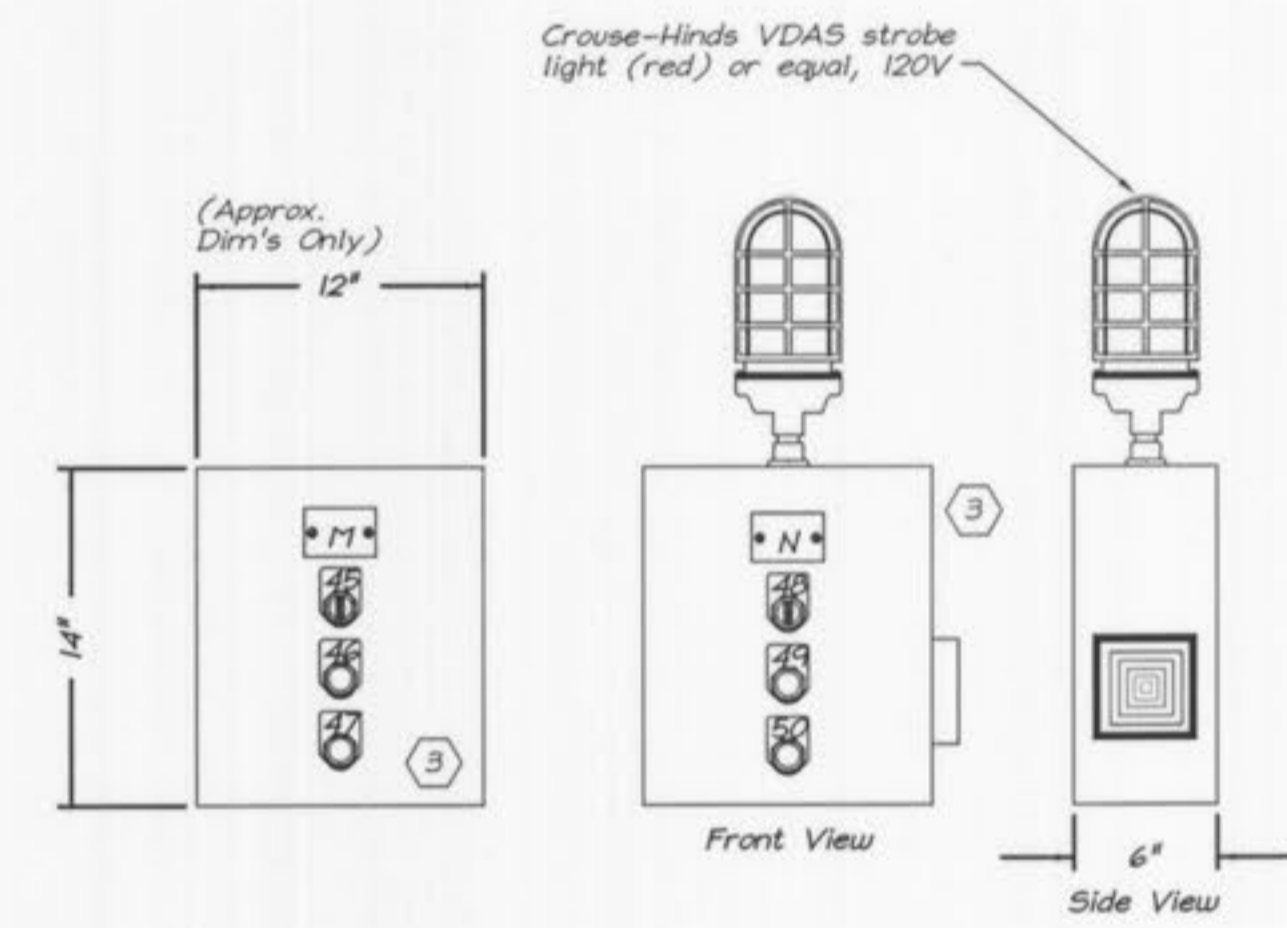


- A Amber light
- B Blue light
- C Green light
- S Selector Switch

**DUCKING SKIMMER (TYP. OF 4)**  
NO SCALE

**CLARIFIER RAKE DRIVE (TYP. OF 4)**  
NO SCALE

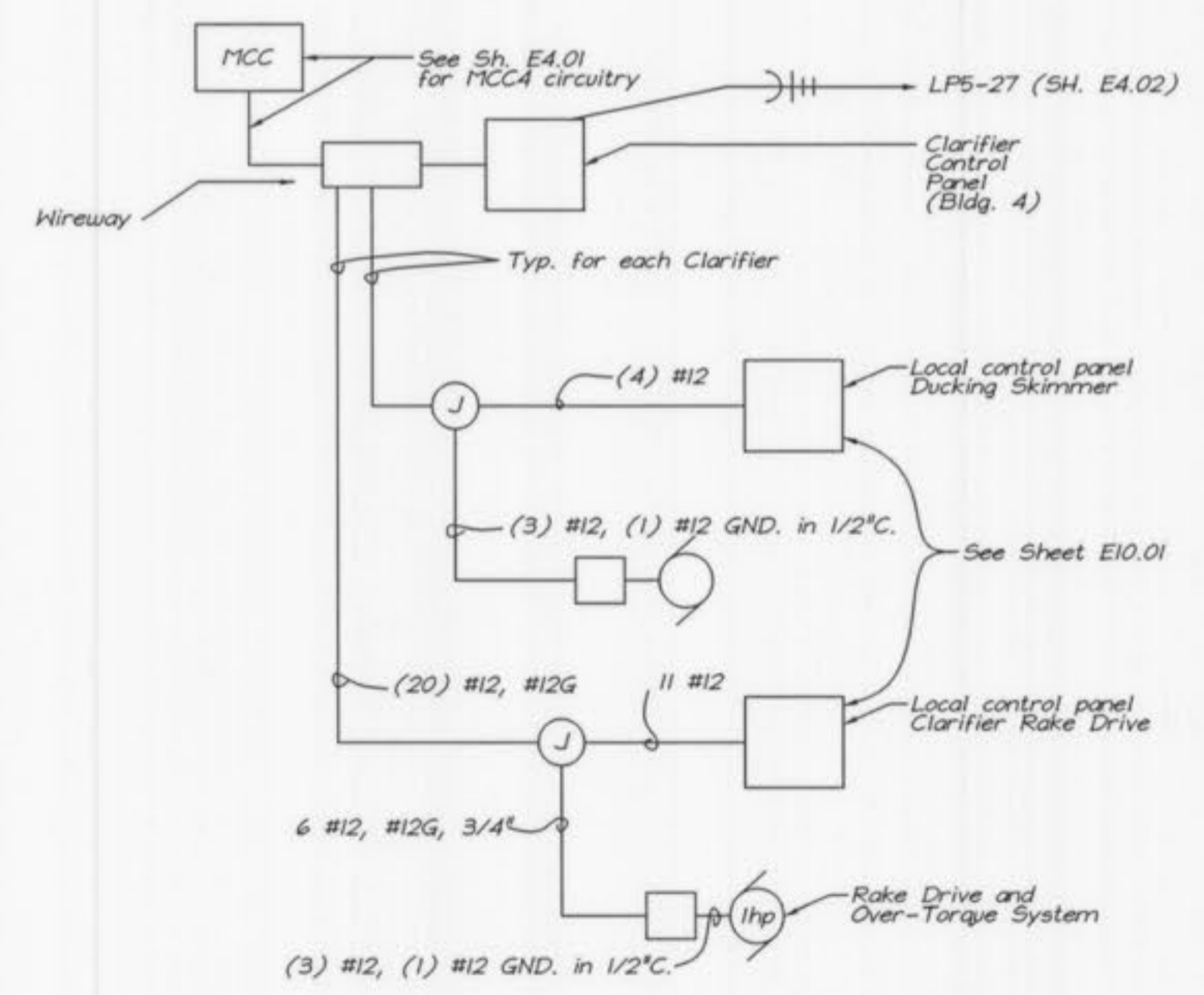
**CLARIFIER CONTROL PANEL**  
NEMA 12  
NO SCALE



**DUCKING SKIMMER**      **CLARIFIER RAKE**  
**CLARIFIER EQUIPMENT LOCAL CONTROL PANELS**  
(Typical for Clarifiers 1-4)

Note: "Local" refers to controls or systems located "locally" - near or adjacent to the equipment being controlled. "Remote" is conversely for items located away from controlled equipment, i.e. remotely located.

- |                           |                                 |                      |
|---------------------------|---------------------------------|----------------------|
| <b>Name Plate Legend:</b> | <b>Escutcheon Plate Legend:</b> |                      |
| A: Ducking Skimmer #1     | 1. Local Control                | 26. Remote Control   |
| B: Rake Drive #1          | 2. Local Control                | 27. Remote Control   |
| C: Equipment Alarms #1    | 3. Alarm Silence                | 28. Over Torque      |
| D: Ducking Skimmer #2     | 4. Remote Control               | 29. Off/Auto         |
| E: Rake Drive #2          | 5. Remote Control               | 30. Off/On           |
| F: Equipment Alarms #2    | 6. Over Torque                  | 31. Cutout           |
| G: Ducking Skimmer #3     | 7. Off/Auto                     | 32. Low/Med/High     |
| H: Rake Drive #3          | 8. Off/On                       | 33. Motor On         |
| I: Equipment Alarms #3    | 9. Cutout                       | 34. Local Control    |
| J: Ducking Skimmer #4     | 10. Low/Med/High                | 35. Local Control    |
| K: Rake Drive #4          | 11. Motor On                    | 36. Alarm Silence    |
| L: Equipment Alarms #4    | 12. Local Control               | 37. Remote Control   |
| M: Ducking Skimmer        | 13. Local Control               | 38. Remote Control   |
| N: Rake Drive             | 14. Alarm Silence               | 39. Over Torque      |
|                           | 15. Remote Control              | 40. Off/Auto         |
|                           | 16. Remote Control              | 41. Off/On           |
|                           | 17. Over Torque                 | 42. Cutout           |
|                           | 18. Off/Auto                    | 43. Low/Med/High     |
|                           | 19. Off/On                      | 44. Motor On         |
|                           | 20. Cutout                      | 45. Local/Off/Remote |
|                           | 21. Low/Med/High                | 46. Raise            |
|                           | 22. Motor On                    | 47. Lower            |
|                           | 23. Local Control               | 48. Local/Off/Remote |
|                           | 24. Local Control               | 49. Alarm Silence    |
|                           | 25. Alarm Silence               | 50. Reset            |



**PRIMARY CLARIFIER WIRING RISER DIAGRAM (TYP. OF 4)**  
NO SCALE

NOTE: Wiring to Clarifier equipment is shown diagrammatically only. Exact route, number, and size of conduits is the responsibility of the contractor. All motor controls and equipment shall be located as shown on the drawings. Wiring shall comply with NEC regarding conduit fill and de-rating. Contractor shall submit proposed wiring method and route to the Engineer for review.



JOB NO.: 9234  
DATE: 10-08-2001

DESIGNED BY: SLC  
DRAWN BY: CFZ  
CHECKED BY: SLC

SHEET NUMBER  
**E4.03**