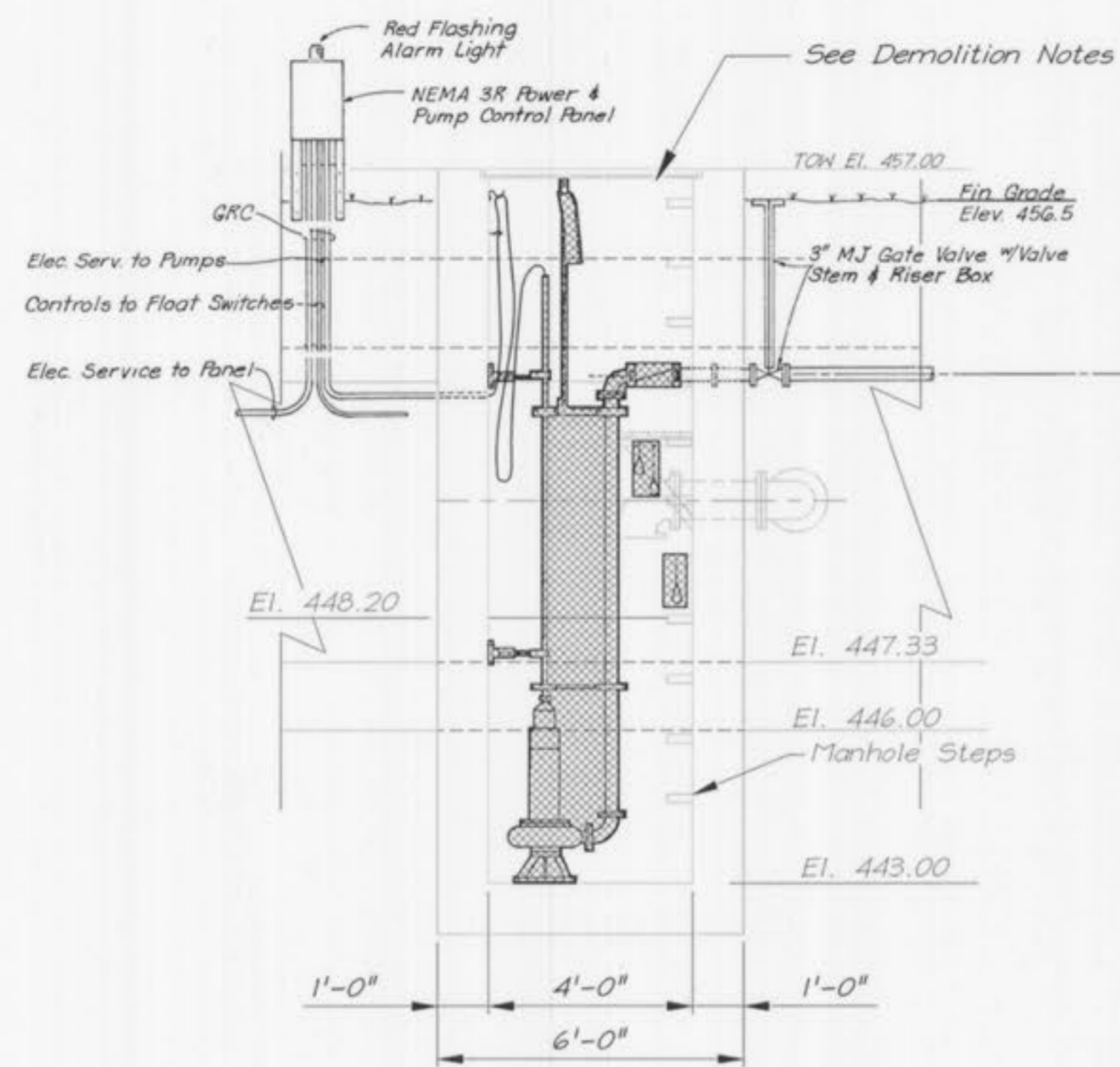


DEMOLITION PLAN
SCALE: 3/8" = 1'-0"



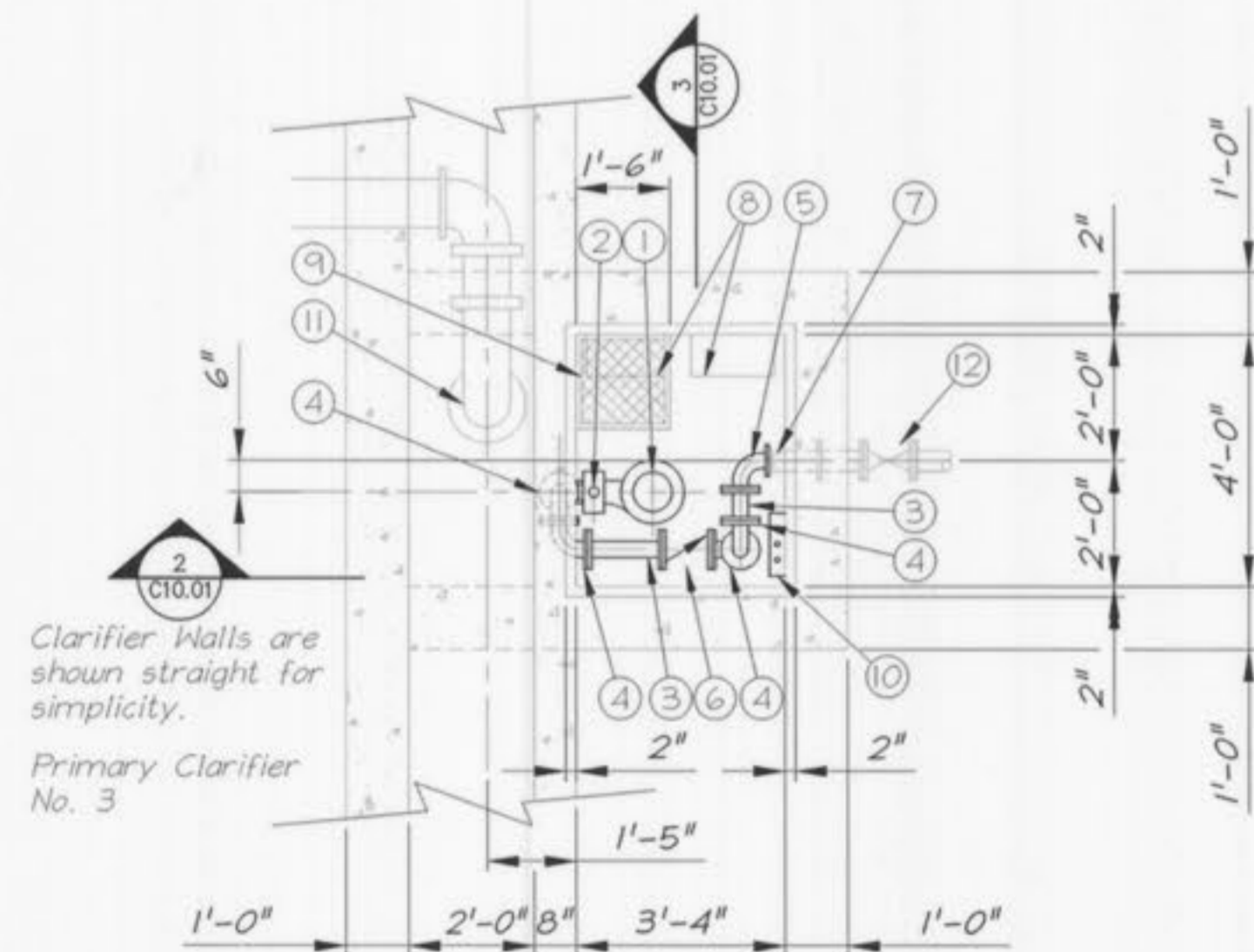
SECTION 1
SCALE: 3/8" = 1'-0"
(Pipes shown out of rotation
See Demolition plan for pipe orientation)

DEMOLITION NOTES:

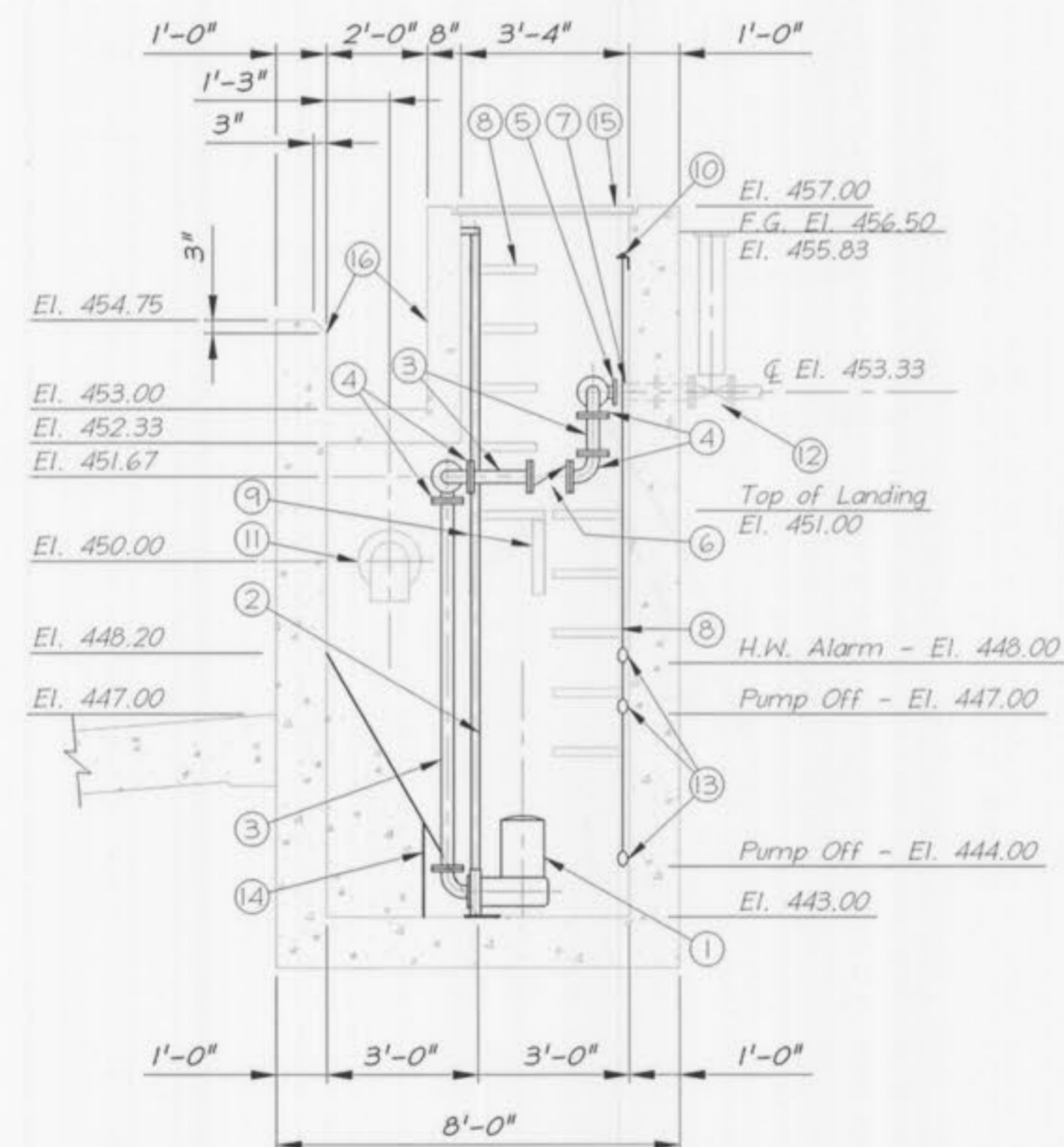
- Items to be Demolished are as follows: 3" Disc pump; All discharge bends, Connection Pieces, Clamp Assemblies, Lifting Mechanisms, Float switches and Brackets/braces, 3" Victaulic Swing Check Valve, Saddle Supports flanged to Wall.
- Concrete fill chamfer to be demolished as needed to accept the New Guide Rail System, New piping and New Scum pump Assembly per Manufacturer's Recommendations. All Exposed Reinforcing shall be Epoxy Painted.
- Special care should be used so that the 3" Victaulic Grooved end Wall Pipe, Power supply cable, Float Control Cables, Landing Platform assembly and Manhole Steps are not damaged in the demolition process.
- Furnish intermediate supports on guide rails per manufacturer's recommendations.

LEGEND

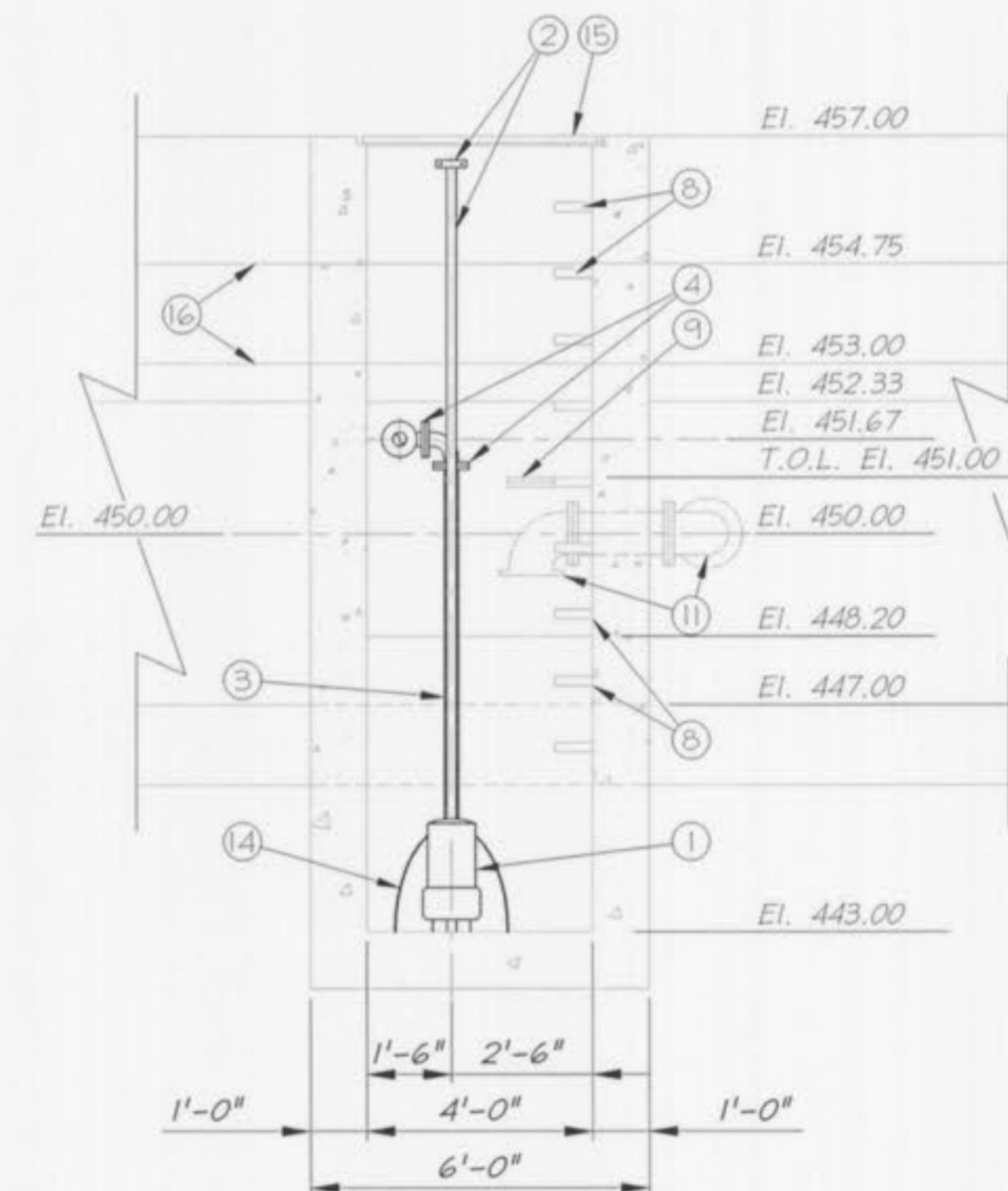
- ABS Model AFP084I Series AFP 3" Scum Pump (new)
- Guide Rail System (new)
- 3" DIP Flg. x Flg. Connection Piece (new)
- 3" X 90° DIP Flg. x Flg. Bend (new)
- 3" X 90° DIP Flg. x Victaulic Bend (new)
- 3" APCO Series 100, Flg. Rubber Flapper Swing Check Valve (new)
- 3" Wall Pipe W/ Victaulic Grooved End (existing)
- Manhole Steps (existing)
- Landing Assembly (existing)
- Adjustable Float Switch Support (new)
- 8" X 90° Bend (existing)
- 3" M.J. Gate Valve w/ Box (existing)
- Adjustable Float Switches (new)
- Limits of Demolition of Concrete Fill. Coat All Exposed Reinforcing with Epoxy Paint.
- Access Hatch Assembly (existing)
- Outboard Weir Trough (existing)



MODIFIED PLAN
SCALE: 3/8" = 1'-0"



SECTION 2
SCALE: 3/8" = 1'-0"



SECTION 3
SCALE: 3/8" = 1'-0"

WASTEWATER TREATMENT PLANT EXPANSION
PRIMARY CLARIFIER NO. 3
SCUM PIT MODIFICATIONS
 CITY OF O'FALLON, MISSOURI

JOB NO.: 9234
DATE: 10-08-2001

DESIGNED BY: TMS
DRAWN BY: RGA/DMH
CHECKED BY: RJR/TMS

SHEET NUMBER

C10.01