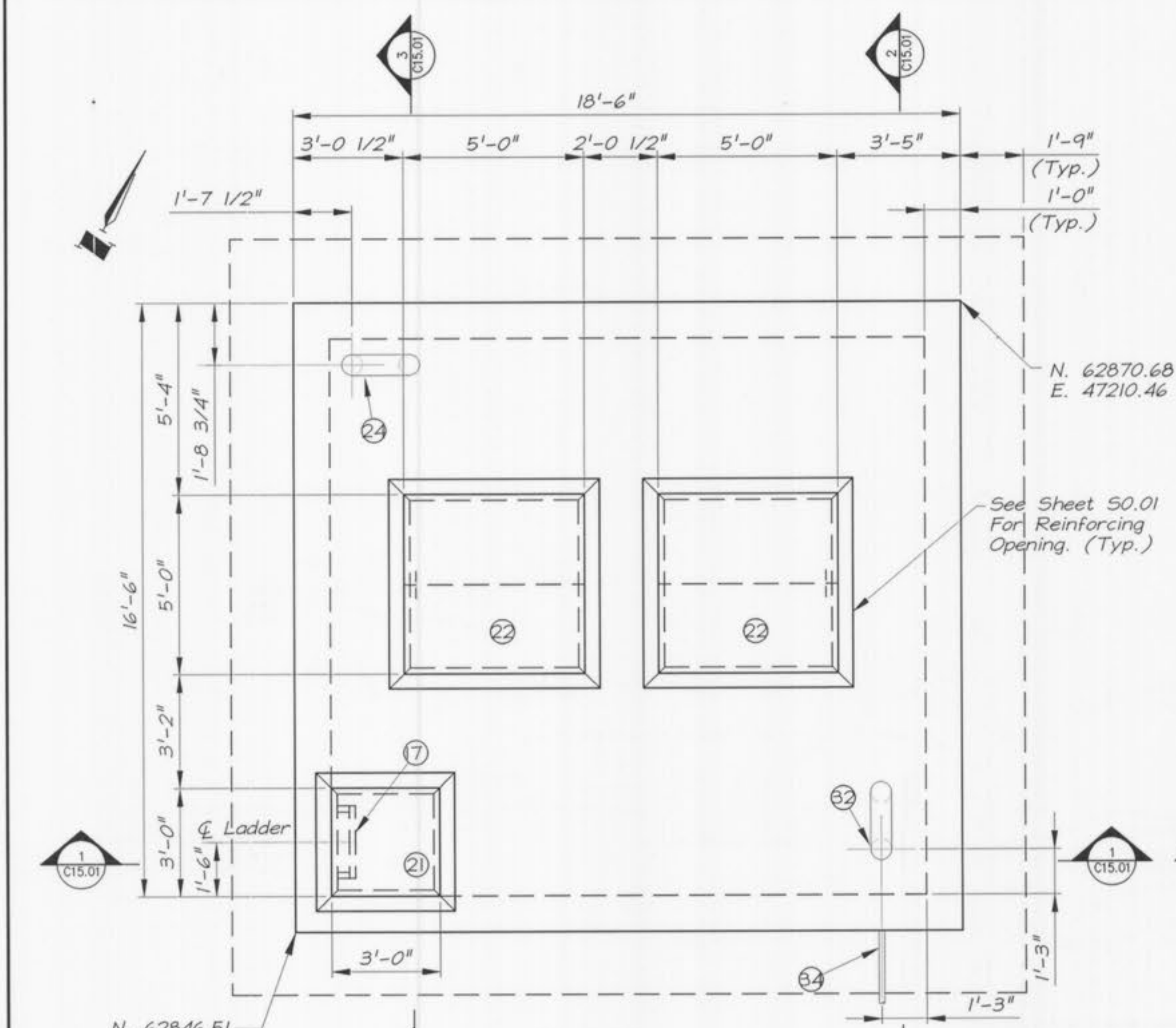
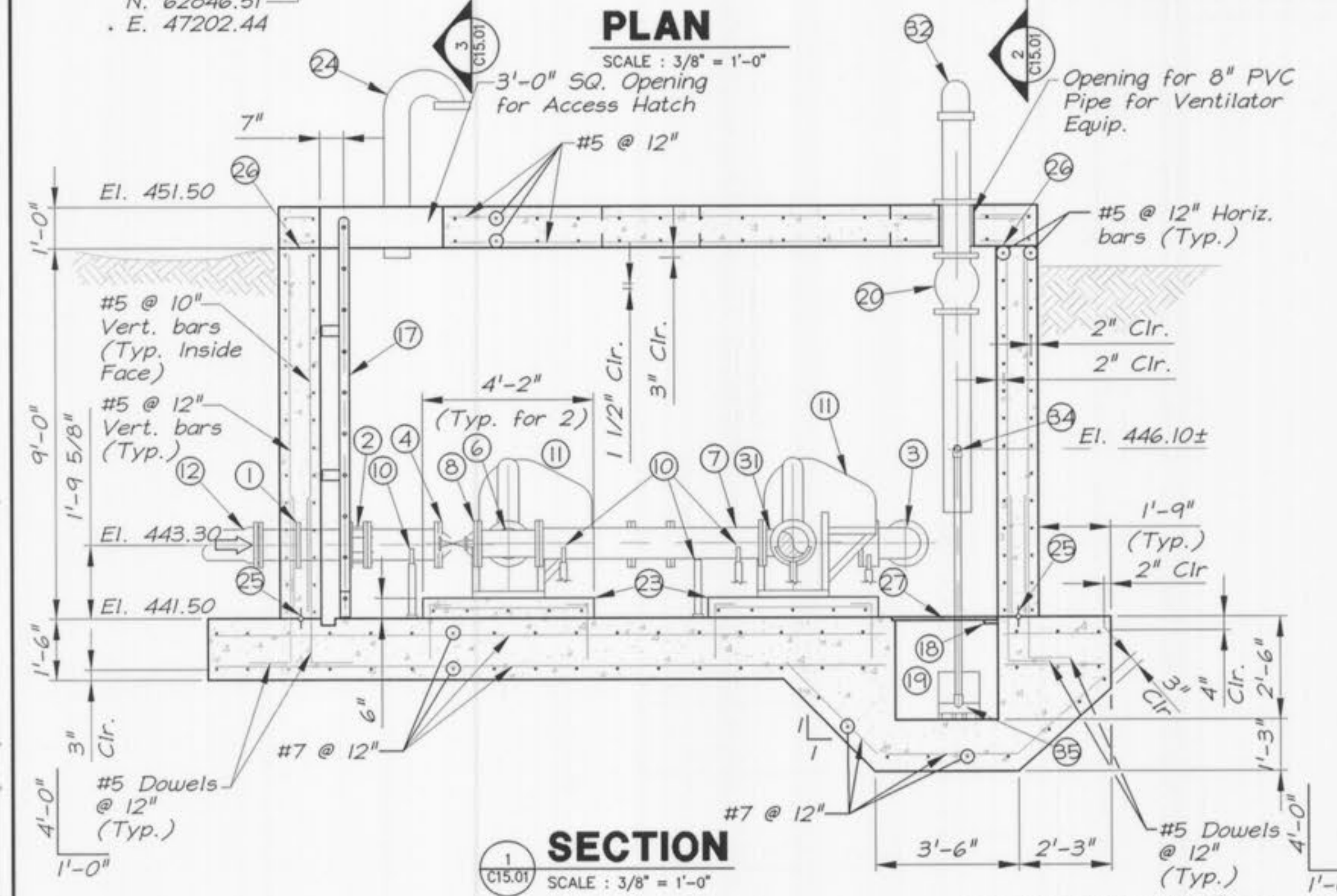


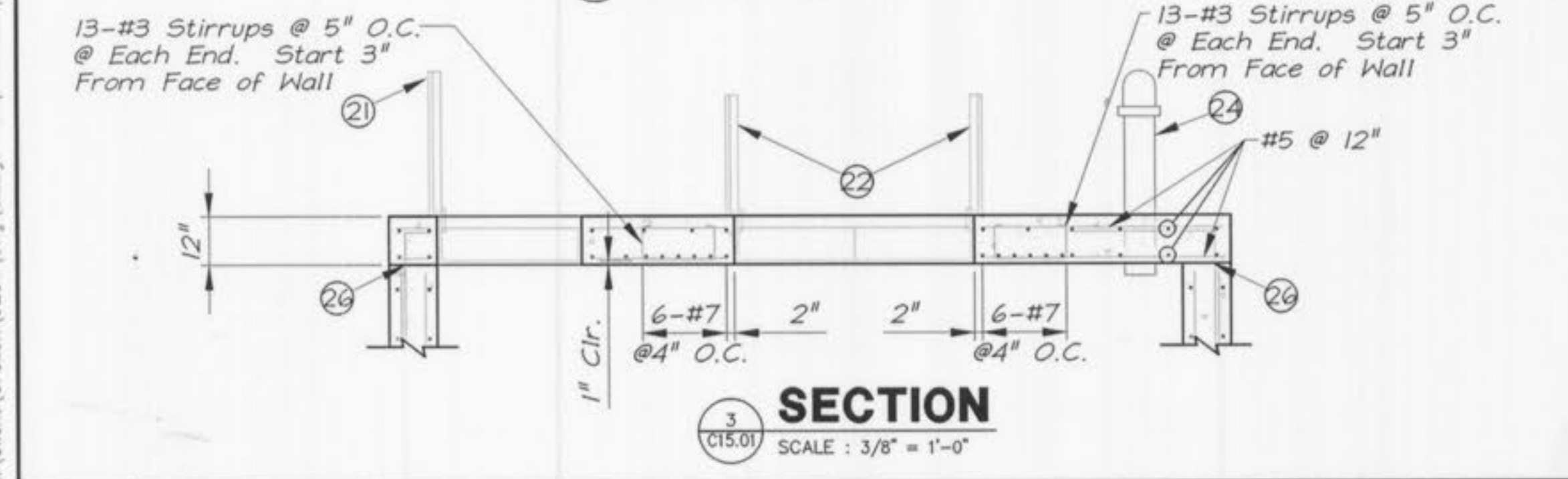
K:\Client\O'Fallon\9234\Draw\Sludge Pump Station\92341000.dwg Sludge Pump Station\92341000.dwg Wednesday October 03, 2001, 3:49pm -- Copyright 2001, George Butler Associates, Inc.



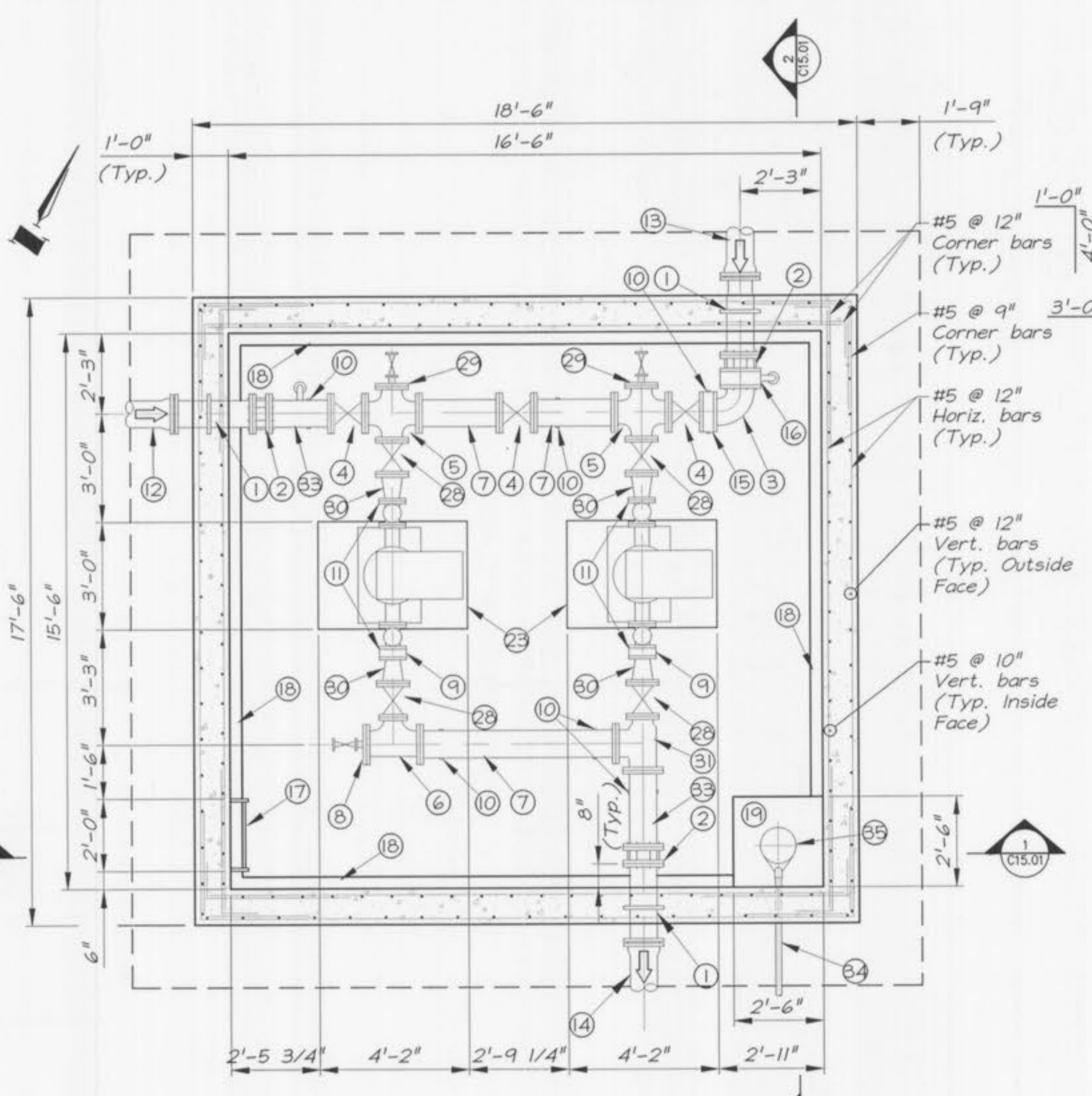
PLAN
SCALE: 3/8" = 1'-0"



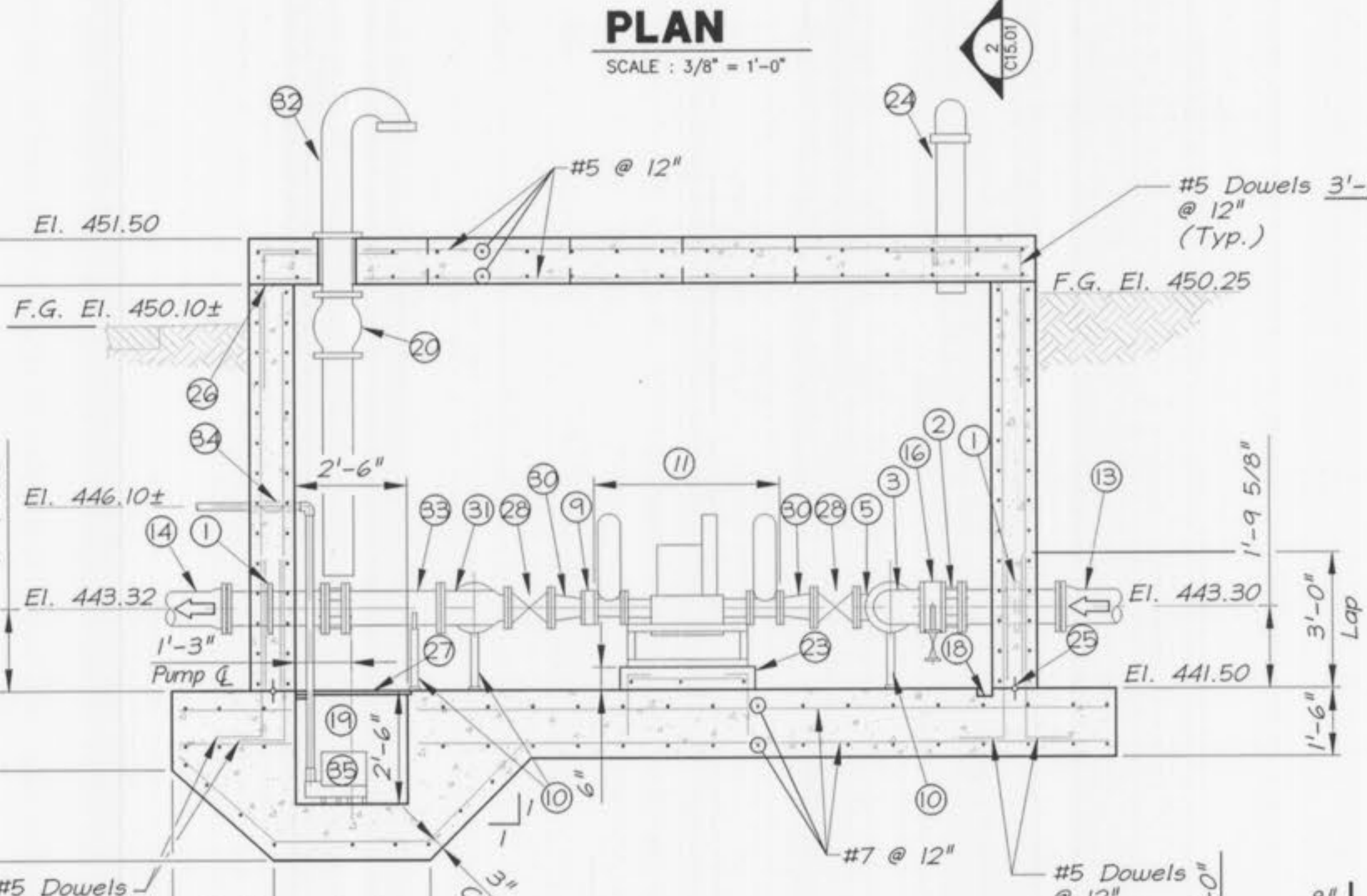
SECTION 1
SCALE: 3/8" = 1'-0"



SECTION 3
SCALE: 3/8" = 1'-0"

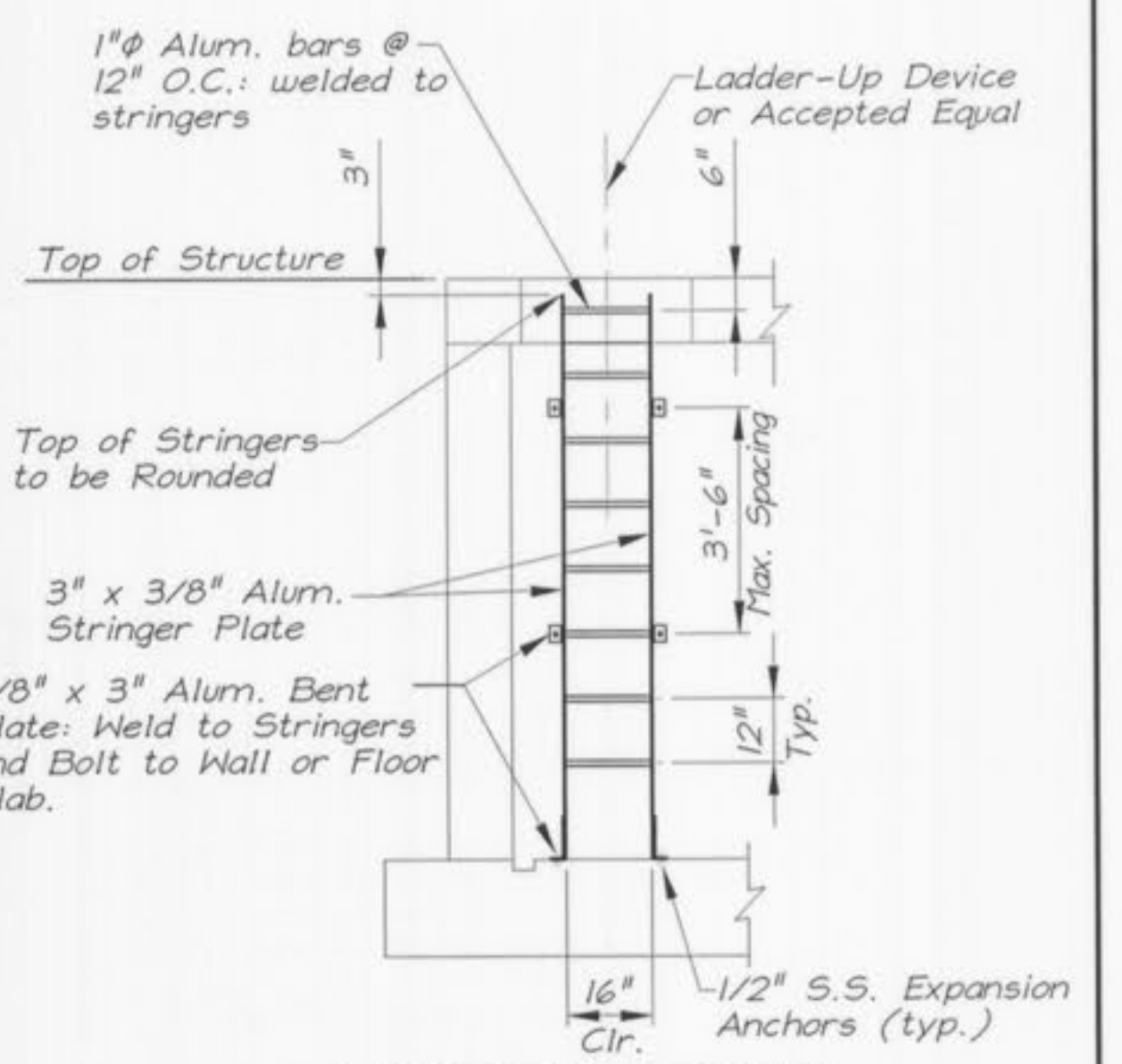


PLAN
SCALE: 3/8" = 1'-0"



SECTION 2
SCALE: 3/8" = 1'-0"

- LEGEND**
- 1 8" DIP Flg. x Flg. x PE Wall Pipe
 - 2 8" Flanged Coupling Adapter
 - 3 8" x 90° Flg. Bend
 - 4 8" DIP Flg. Plug Valve
 - 5 8" x 6" DIP Flg. Cross
 - 6 8" x 8" x 6" DIP Flg. Reducing Tee
 - 7 8" DIP Flg. Connection Piece
 - 8 8" Blind Flange w/ 2" Tap, Galv. Nipple & 2" Plug Valve
 - 9 4" Spacer
 - 10 Pipe Support
 - 11 4" Belt Pulley Pump Assembly w/ Pulsation Dampers
 - 12 DIP Connection Piece from Primary Clarifier No. 3
 - 13 DIP Connection Piece from Primary Clarifier No. 4
 - 14 DIP Connection Piece to the Sludge Blending Tank
 - 15 8" Spacer
 - 16 8" Spacer w/ 1" Tap, 1" Galv. Nipple, 1" x 90° Bend Down & 1" Plug Valve
 - 17 Ladder (See Ladder Detail - This Sheet)
 - 18 2" x 4" Drain Continuous around Perimeter to Sump Area
 - 19 2'-6" x 2'-6" Square Sump Area
 - 20 Direct Drive Roof Ventilator to Activate when any Hatch opens. Explosion Proof Disconnect Switch Refer to Sheet E15.01 for Additional Details.
 - 21 3'-0" x 3'-0" Single Leaf Aluminum Access Door w/ 1 1/2" PVC Drain to exterior wall
 - 22 5'-0" x 5'-0" Double Leaf Aluminum Access Doors w/ Lifting Handles & 1 1/2" PVC to drain within 6" of sump area
 - 23 3'-0" x 4'-2" x 6" Housekeeping Equipment Pad (See Typical Detail on Sheet 50.01)
 - 24 8" PVC Air Inlet to Vault to Terminate w/ Flg. 180° Bend and 24 Mesh Stainless Steel Insect Screen
 - 25 Roughened Construction Joint w/ 6" Ribbed PVC Water Stop
 - 26 Roughened Construction Joint to 1/4" Amplitude
 - 27 Aluminum Grating (Banded)
 - 28 6" Flg. Plug Valve
 - 29 6" Blind Flange w/ 2" Tap, Galv. Nipple & 2" Plug Valve
 - 30 6" x 4" DIP Flg. Concentric Reducer
 - 31 8" x 6" x 8" DIP Special Reducing Tee (Tee reducing On run - A-30010 American Ductile Iron)
 - 32 8" PVC Air Outlet from Vault to Terminate w/ Flg. 180° Bend and 24 Mesh Stainless Steel Insect Screen
 - 33 8" DIP Flg. x P.E. Connection Piece
 - 34 1 1/2" Sch 80 PVC Drain line W/ Wall Sleeve, Link seal & Grout Solid to be Discharged at the Bar Screen, Comminutor & Meter Vault. Comminutor Vault wall to be core drilled with Link seal & Grout solid at the Discharge End of drain.
 - 35 Sump Pump W/ 1 1/2" Discharge



LADDER DETAIL
SCALE: 3/8" = 1'-0"

NOTE: See Sheet C11.01 for Placement of Permanent Bollards around Primary Sludge Pump Station No. 2

GEORGE BUTLER ASSOCIATES, INC.
 Engineers • Architects
 Kansas • Missouri • Illinois
GBA



WASTEWATER TREATMENT PLANT EXPANSION
PRIMARY SLUDGE PUMP STATION NO. 2
PLAN AND SECTIONS
 CITY OF FALLON, MISSOURI

JOB NO.: 9234
 DATE: 10-08-2001
 DESIGNED BY: TMS
 DRAWN BY: RGA/DMH
 CHECKED BY: RJR/TMS
 SHEET NUMBER
C15.01